

# 309

**EAST FORDHAM ROAD**  
FORDHAM, BRONX

Corner of East Fordham & East Kingsbridge Roads

RETAIL FOR LEASE



#### APPROXIMATE SIZE

3,050 SF

#### CEILING HEIGHT

15 FT

#### ASKING RENT

\$160 PSF

#### POSSESSION

Immediate

#### TERM

Negotiable

#### FRONTAGE

25 FT

#### COMMENTS

- Fully built-out retail space, ready for immediate occupancy
- Suited for wireless, convenience, fashion, or service tenants
- Year-round demand location surrounded by national co-tenants

#### NEIGHBORS

- Gap • Wing Stop • Kids Foot Locker • Target
- Verizon • Popeyes • Cinnabon • Gong Cha • VIM • Wendy's • Chipotle • Rainbow
- PC Richard & Son • Chick-Fil-A

#### TRANSPORTATION



#### NOAM AZIZ

Director  
212.468.5984  
naziz@meridiancapital.com

#### STEPHEN LIGAMBI

Senior Associate  
212.468.5985  
sligambi@meridiancapital.com



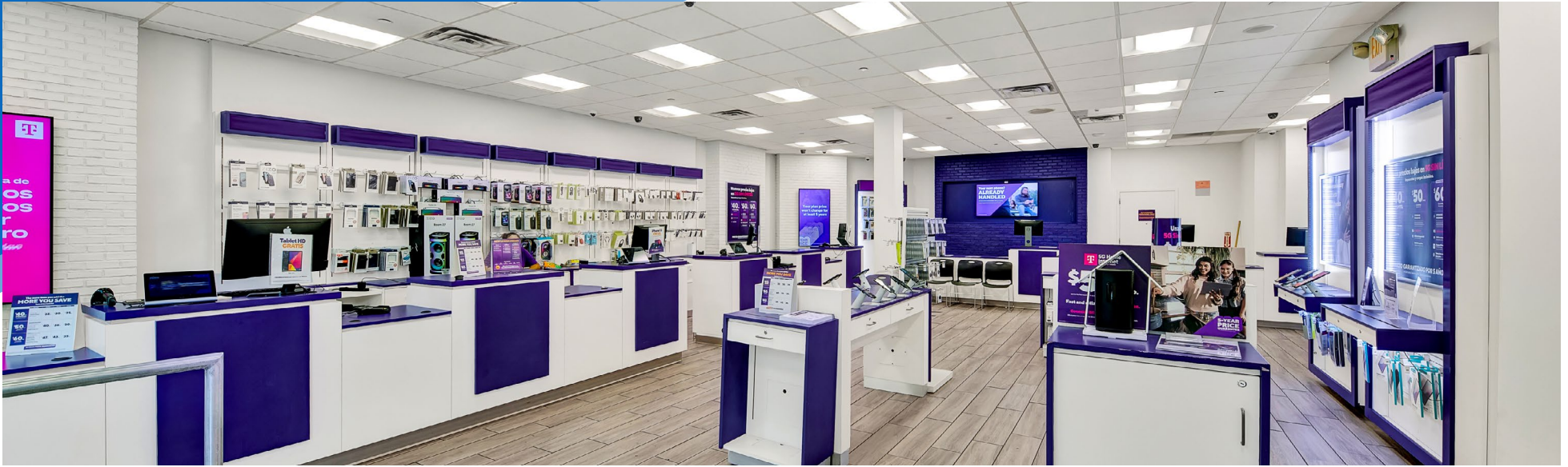
**MERIDIAN**  
RETAIL LEASING

All information supplied is from sources deemed reliable and is furnished subject to errors, omissions, modifications, removal of the listing from sale or lease, and to any listing conditions, including the rates and manner of payment of commissions for particular offerings imposed by Meridian Capital Group. This information may include estimates and projections prepared by Meridian Capital Group with respect to future events, and these future events may or may not actually occur. Such estimates and projections reflect various assumptions concerning anticipated results. While Meridian Capital Group believes these assumptions are reasonable, there can be no assurance that any of these estimates and projections will be correct. Therefore, actual results may vary materially from these estimates and projections. Any square footage dimensions set forth are approximate.

309 EAST FORDHAM ROAD

FORDHAM, BRONX | Corner of East Fordham and East Kingsbridge Roads

RETAIL FOR LEASE



INTERIOR

NOAM AZIZ

Director  
212.468.5984  
naziz@meridiancapital.com

STEPHEN LIGAMBI

Senior Associate  
212.468.5985  
sligambi@meridiancapital.com



**MERIDIAN**  
RETAIL LEASING

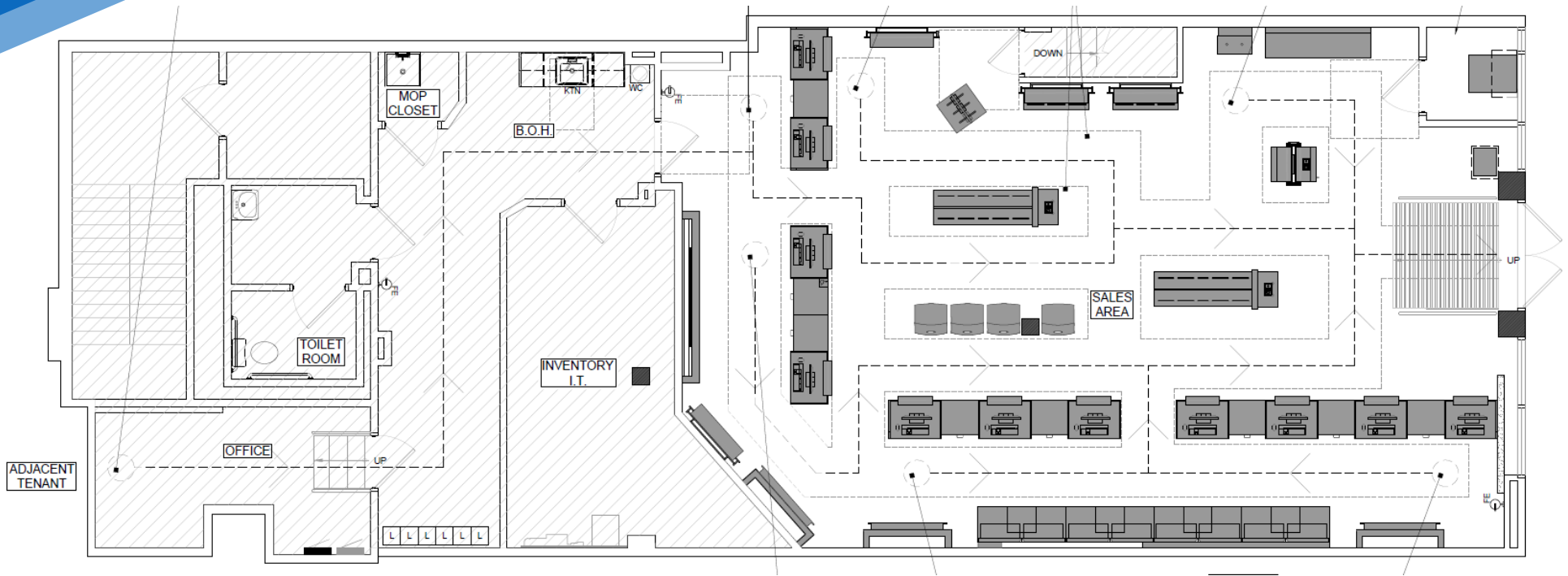
All information supplied is from sources deemed reliable and is furnished subject to errors, omissions, modifications, removal of the listing from sale or lease, and to any listing conditions, including the rates and manner of payment of commissions for particular offerings imposed by Meridian Capital Group. This information may include estimates and projections prepared by Meridian Capital Group with respect to future events, and these future events may or may not actually occur. Such estimates and projections reflect various assumptions concerning anticipated results. While Meridian Capital Group believes these assumptions are reasonable, there can be no assurance that any of these estimates and projections will be correct. Therefore, actual results may vary materially from these estimates and projections. Any square footage dimensions set forth are approximate.

# 309 EAST FORDHAM ROAD

FORDHAM, BRONX | Corner of East Fordham and East Kingsbridge Roads

RETAIL FOR LEASE

FLOOR PLAN



## NOAM AZIZ

Director  
212.468.5984  
naziz@meridiancapital.com

## STEPHEN LIGAMBI

Senior Associate  
212.468.5985  
sligambi@meridiancapital.com



**MERIDIAN**  
RETAIL LEASING

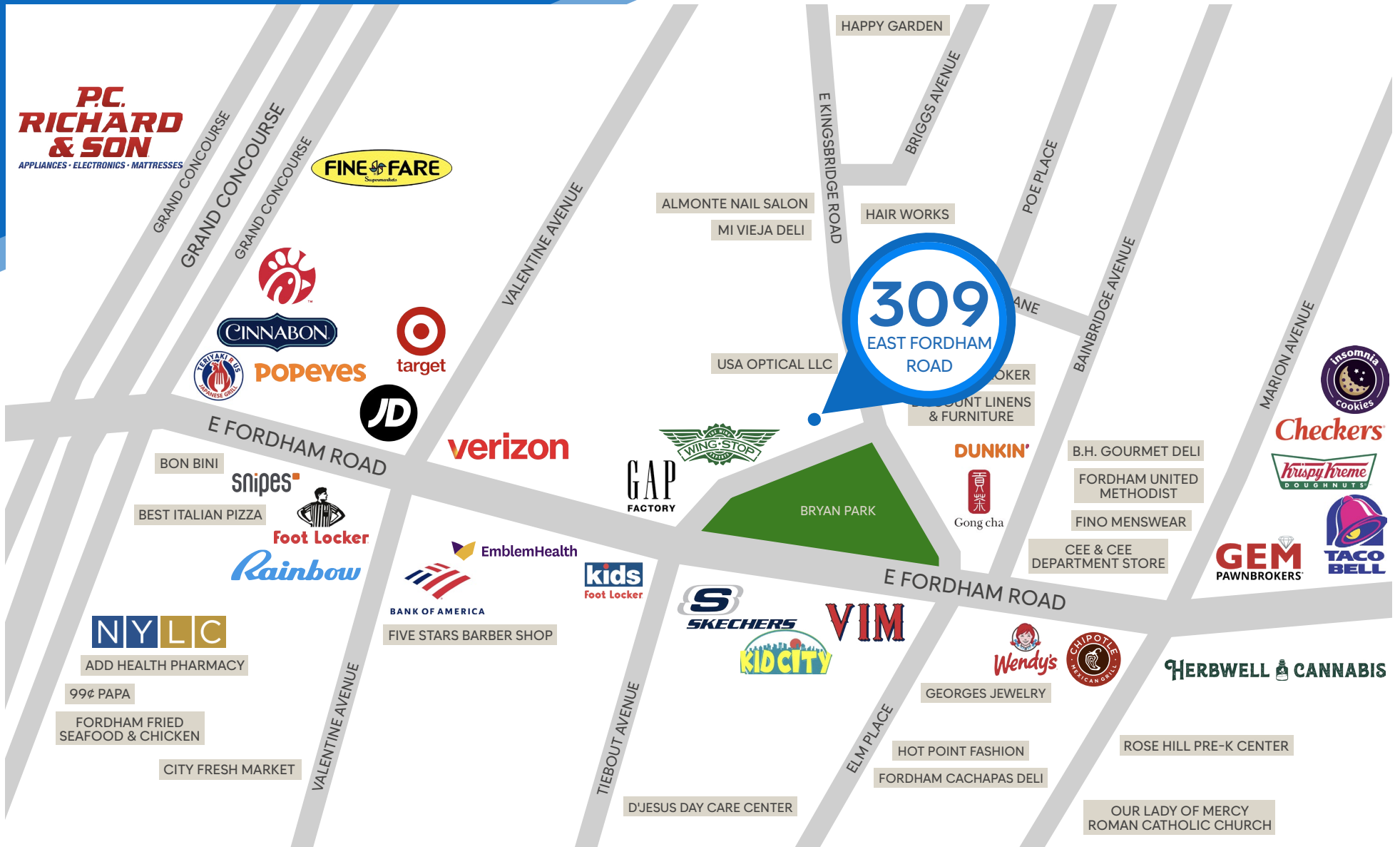
All information supplied is from sources deemed reliable and is furnished subject to errors, omissions, modifications, removal of the listing from sale or lease, and to any listing conditions, including the rates and manner of payment of commissions for particular offerings imposed by Meridian Capital Group. This information may include estimates and projections prepared by Meridian Capital Group with respect to future events, and these future events may or may not actually occur. Such estimates and projections reflect various assumptions concerning anticipated results. While Meridian Capital Group believes these assumptions are reasonable, there can be no assurance that any of these estimates and projections will be correct. Therefore, actual results may vary materially from these estimates and projections. Any square footage dimensions set forth are approximate.

# 309 EAST FORDHAM ROAD

FORDHAM, BRONX | Corner of East Fordham and East Kingsbridge Roads

RETAIL FOR LEASE

NEIGHBORS



NOAM AZIZ

Director  
212.468.5984  
naziz@meridiancapital.com

STEPHEN LIGAMBI

Senior Associate  
212.468.5985  
sligambi@meridiancapital.com



**MERIDIAN**  
RETAIL LEASING

All information supplied is from sources deemed reliable and is furnished subject to errors, omissions, modifications, removal of the listing from sale or lease, and to any listing conditions, including the rates and manner of payment of commissions for particular offerings imposed by Meridian Capital Group. This information may include estimates and projections prepared by Meridian Capital Group with respect to future events, and these future events may or may not actually occur. Such estimates and projections reflect various assumptions concerning anticipated results. While Meridian Capital Group believes these assumptions are reasonable, there can be no assurance that any of these estimates and projections will be correct. Therefore, actual results may vary materially from these estimates and projections. Any square footage dimensions set forth are approximate.