

# 301

## EAST FORDHAM ROAD FORDHAM, BRONX

Corner of East Fordham & East Kingsbridge Roads

RETAIL FOR LEASE

### APPROXIMATE SIZE

5,000 SF + Basement

### CEILING HEIGHT

20 FT

### ASKING RENT

\$140 PSF

### POSSESSION

October 1, 2026

### TERM

Negotiable

### FRONTAGE

50 FT Wraparound

### COMMENTS

- Current bank space with secure infrastructure and open layout
- Glass frontage perfect for signage/branding
- Ideal for QSR, café, service retail, or other specialty uses
- Highly visible corner with heavy foot traffic fueled by residency and daytime population

### NEIGHBORS

- Gap • Wing Stop • Kids Foot Locker • Target  
• Verizon • Popeyes • Cinnabon • Gong  
Cha • VIM • Wendy's • Chipotle • Rainbow  
• PC Richard & Son • Chick-Fil-A

### TRANSPORTATION



PROPERTY INFORMATION

### NOAM AZIZ

Director  
212.468.5984  
naziz@meridiancapital.com

### STEPHEN LIGAMBI

Senior Associate  
212.468.5985  
sligambi@meridiancapital.com



**MERIDIAN**  
RETAIL LEASING

All information supplied is from sources deemed reliable and is furnished subject to errors, omissions, modifications, removal of the listing from sale or lease, and to any listing conditions, including the rates and manner of payment of commissions for particular offerings imposed by Meridian Capital Group. This information may include estimates and projections prepared by Meridian Capital Group with respect to future events, and these future events may or may not actually occur. Such estimates and projections reflect various assumptions concerning anticipated results. While Meridian Capital Group believes these assumptions are reasonable, there can be no assurance that any of these estimates and projections will be correct. Therefore, actual results may vary materially from these estimates and projections. Any square footage dimensions set forth are approximate.

301 EAST FORDHAM ROAD  
FORDHAM, BRONX | Corner of East Fordham and East Kingsbridge Roads

RETAIL FOR LEASE



INTERIOR

**NOAM AZIZ**  
Director  
212.468.5984  
naziz@meridiancapital.com

**STEPHEN LIGAMBI**  
Senior Associate  
212.468.5985  
sligambi@meridiancapital.com



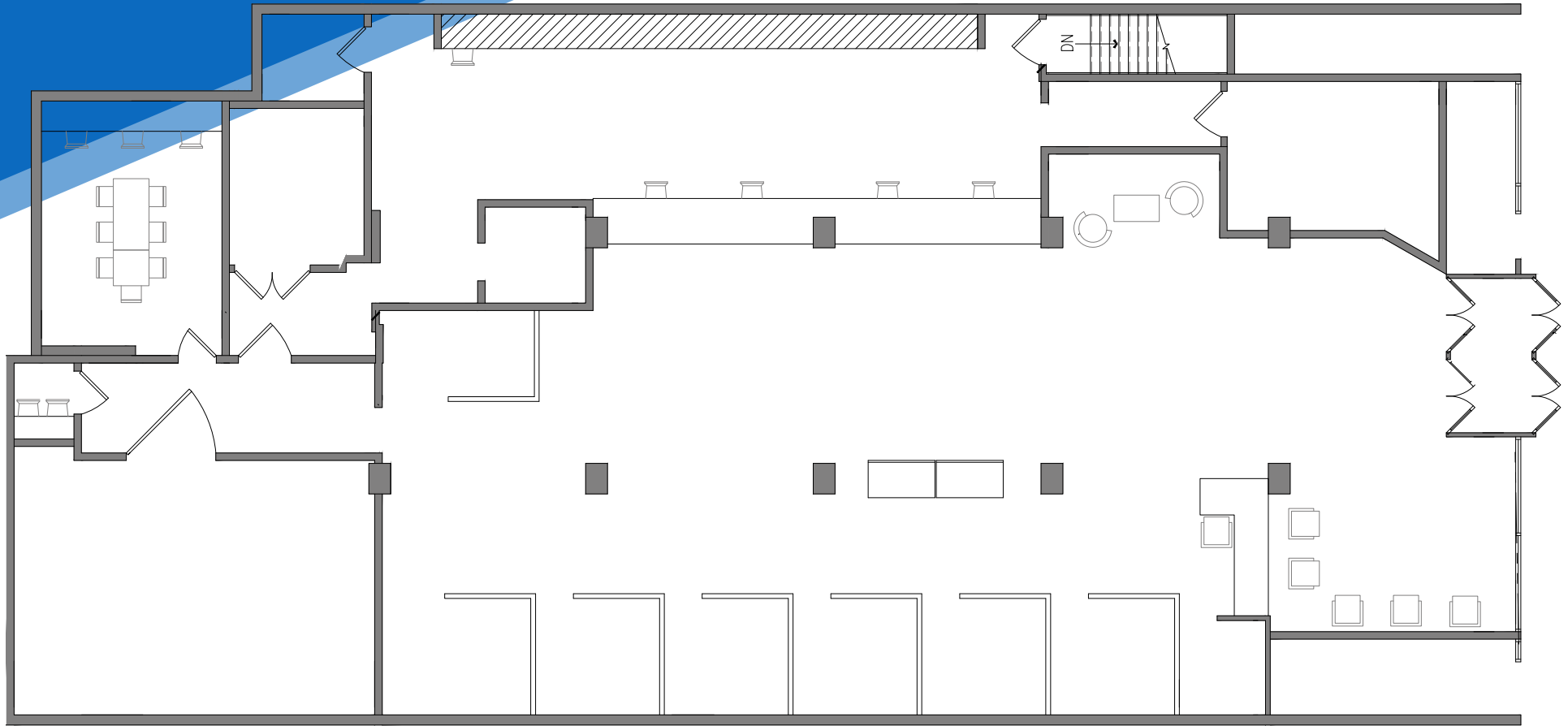
**MERIDIAN**  
RETAIL LEASING

All information supplied is from sources deemed reliable and is furnished subject to errors, omissions, modifications, removal of the listing from sale or lease, and to any listing conditions, including the rates and manner of payment of commissions for particular offerings imposed by Meridian Capital Group. This information may include estimates and projections prepared by Meridian Capital Group with respect to future events, and these future events may or may not actually occur. Such estimates and projections reflect various assumptions concerning anticipated results. While Meridian Capital Group believes these assumptions are reasonable, there can be no assurance that any of these estimates and projections will be correct. Therefore, actual results may vary materially from these estimates and projections. Any square footage dimensions set forth are approximate.

301 EAST FORDHAM ROAD  
FORDHAM, BRONX | Corner of East Fordham and East Kingsbridge Roads

RETAIL FOR LEASE

FLOOR PLAN | GROUND FLOOR



NOAM AZIZ  
Director  
212.468.5984  
naziz@meridiancapital.com

STEPHEN LIGAMBI  
Senior Associate  
212.468.5985  
sligambi@meridiancapital.com



**MERIDIAN**  
RETAIL LEASING

All information supplied is from sources deemed reliable and is furnished subject to errors, omissions, modifications, removal of the listing from sale or lease, and to any listing conditions, including the rates and manner of payment of commissions for particular offerings imposed by Meridian Capital Group. This information may include estimates and projections prepared by Meridian Capital Group with respect to future events, and these future events may or may not actually occur. Such estimates and projections reflect various assumptions concerning anticipated results. While Meridian Capital Group believes these assumptions are reasonable, there can be no assurance that any of these estimates and projections will be correct. Therefore, actual results may vary materially from these estimates and projections. Any square footage dimensions set forth are approximate.

301 EAST FORDHAM ROAD

FORDHAM, BRONX | Corner of East Fordham and East Kingsbridge Roads

RETAIL FOR LEASE



FLOOR PLAN | BASEMENT

NOAM AZIZ

Director  
212.468.5984  
naziz@meridiancapital.com

STEPHEN LIGAMBI

Senior Associate  
212.468.5985  
sligambi@meridiancapital.com



**MERIDIAN**  
RETAIL LEASING

All information supplied is from sources deemed reliable and is furnished subject to errors, omissions, modifications, removal of the listing from sale or lease, and to any listing conditions, including the rates and manner of payment of commissions for particular offerings imposed by Meridian Capital Group. This information may include estimates and projections prepared by Meridian Capital Group with respect to future events, and these future events may or may not actually occur. Such estimates and projections reflect various assumptions concerning anticipated results. While Meridian Capital Group believes these assumptions are reasonable, there can be no assurance that any of these estimates and projections will be correct. Therefore, actual results may vary materially from these estimates and projections. Any square footage dimensions set forth are approximate.

