

# 250

## WEST 49<sup>TH</sup> STREET TIMES SQUARE, NYC

Between Eighth Avenue & Broadway

RETAIL/RESTAURANT FOR LEASE

### APPROXIMATE SIZE

2,500 SF

### ASKING RENT

\$175 PSF

### POSSESSION

Immediate

### TERM

Negotiable

### FRONTAGE

50 FT

### COMMENTS

- Stunning new 29-story mixed-use development
- Will be delivered in white-box condition
- Logical divisions considered
- Food uses accepted; can be vented
- Prominent facade in Times Square

### NEIGHBORS

Mayfair Hotel • La Masseria • Ed Sullivan Theater  
• The Walker Kerr Theatre • Krispy Kreme • Mia's  
• Superdry • Junior's • Whole Foods • The Blue  
Dog Cookhouse & Bar • Sombrero • Gelatoville •  
Brooklyn Chop House • The Gallivant • Dutch Freds

### TRANSPORTATION

1 2 3 A C E N Q R W B D F M 7



PROPERTY INFORMATION

### NOAM AZIZ

Senior Director  
212.468.5984  
naziz@meridiancapital.com

### CARSON SHAHRABANI

Senior Associate  
212.468.5927  
cshahrabani@meridiancapital.com

### MAX FREUDENBERGER

Senior Associate  
212.468.5951  
mfreudenberg@meridiancapital.com



**MERIDIAN**  
RETAIL LEASING

All information supplied is from sources deemed reliable and is furnished subject to errors, omissions, modifications, removal of the listing from sale or lease, and to any listing conditions, including the rates and manner of payment of commissions for particular offerings imposed by Meridian Capital Group. This information may include estimates and projections prepared by Meridian Capital Group with respect to future events, and these future events may or may not actually occur. Such estimates and projections reflect various assumptions concerning anticipated results. While Meridian Capital Group believes these assumptions are reasonable, there can be no assurance that any of these estimates and projections will be correct. Therefore, actual results may vary materially from these estimates and projections. Any square footage dimensions set forth are approximate.

250 WEST 49<sup>TH</sup> STREET  
TIMES SQUARE, NYC | Between Eighth Avenue and Broadway

RETAIL/RESTAURANT FOR LEASE

EXTERIOR | RENDERINGS



**NOAM AZIZ**  
Senior Director  
212.468.5984  
naziz@meridiancapital.com

**CARSON SHAHRABANI**  
Senior Associate  
212.468.5927  
cshahrabani@meridiancapital.com

**MAX FREUDENBERGER**  
Senior Associate  
212.468.5951  
mfreudenberg@meridiancapital.com



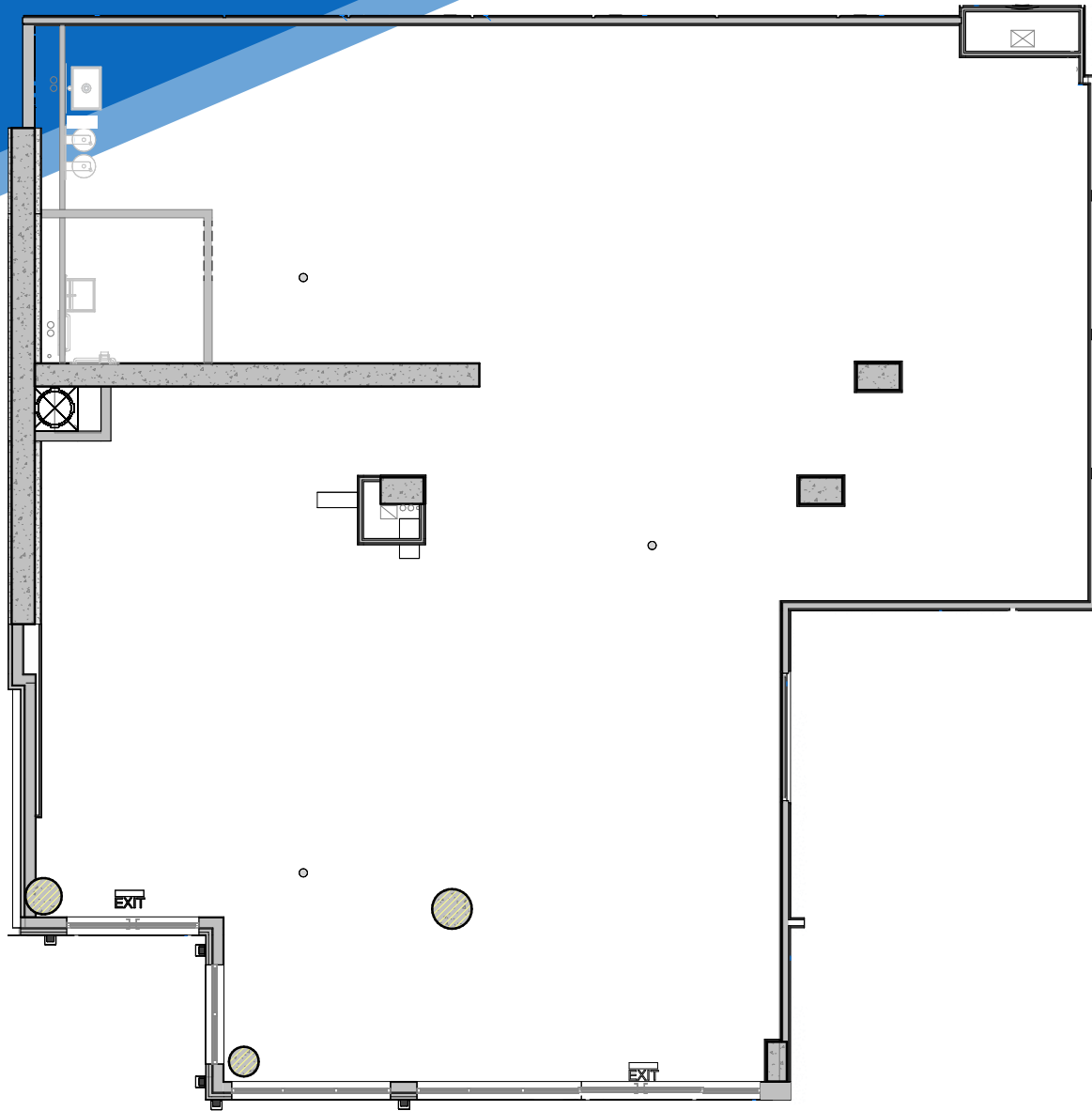
**MERIDIAN**  
RETAIL LEASING

All information supplied is from sources deemed reliable and is furnished subject to errors, omissions, modifications, removal of the listing from sale or lease, and to any listing conditions, including the rates and manner of payment of commissions for particular offerings imposed by Meridian Capital Group. This information may include estimates and projections prepared by Meridian Capital Group with respect to future events, and these future events may or may not actually occur. Such estimates and projections reflect various assumptions concerning anticipated results. While Meridian Capital Group believes these assumptions are reasonable, there can be no assurance that any of these estimates and projections will be correct. Therefore, actual results may vary materially from these estimates and projections. Any square footage dimensions set forth are approximate.

250 WEST 49<sup>TH</sup> STREET  
TIMES SQUARE, NYC | Between Eighth Avenue and Broadway

RETAIL/RESTAURANT FOR LEASE

FLOOR PLAN



**NOAM AZIZ**  
Senior Director  
212.468.5984  
naziz@meridiancapital.com

**CARSON SHAHRABANI**  
Senior Associate  
212.468.5927  
cshahrabani@meridiancapital.com

**MAX FREUDENBERGER**  
Senior Associate  
212.468.5951  
mfreudenberg@meridiancapital.com



**MERIDIAN**  
RETAIL LEASING

All information supplied is from sources deemed reliable and is furnished subject to errors, omissions, modifications, removal of the listing from sale or lease, and to any listing conditions, including the rates and manner of payment of commissions for particular offerings imposed by Meridian Capital Group. This information may include estimates and projections prepared by Meridian Capital Group with respect to future events, and these future events may or may not actually occur. Such estimates and projections reflect various assumptions concerning anticipated results. While Meridian Capital Group believes these assumptions are reasonable, there can be no assurance that any of these estimates and projections will be correct. Therefore, actual results may vary materially from these estimates and projections. Any square footage dimensions set forth are approximate.

**250 WEST 49<sup>TH</sup> STREET**

**W 50TH STREET**

- BANK OF AMERICA
- LONGACRE HOUSE APARTMENTS
- RIGHT MINDS center
- CAMEO RESIDENCES
- Don Antonio NEW YORK
- WHOLE FOODS MARKET
- POKE BOWL
- GERSHWIN THEATRE
- STARBUCKS
- CAPEZIO
- WINTER GARDEN THEATRE
- THE MICHELANGI NEW YORK
- M&T Bank
- Rosetta the Italian bakery
- CIRCLE IN THE SQUARE THEATRE SCHOOL
- Applebee's GRILL + BAR
- DUNI

**W 49TH STREET**

- Orangetheory
- Blue Dog COOKHOUSE and BAR
- TWO WORLDWIDE PLAZA CONDOMINIUM
- NEW WORLD STAGES
- Banking Dog RESTAURANT
- STARBUCKS
- JUST SALAD
- CARNegie DINER & CAFE
- citizen hotels
- Nothing in girl all i y m i a l t t e r i s
- SPIN
- iris galerie YOUR EYE FOR ART
- L'ADERAC SWITZERLAND
- TD Bank
- CVS
- AMBASSADOR THEATRE
- Juniors
- STARBUCKS

**W 48TH STREET**

- Spotted Brats
- Alcone Company
- CHURRASCARIA
- THREE KINGDOMS BBQ
- LA MESSERIA
- Budget
- THE RITZ PLAZA
- WALTER KERR Theatre
- NYC MEGA MART
- Superdry
- HELL'S KITCHENETTE GOURMET DELI
- BELVEDERE HOTEL
- CIVILIAN
- SOMBRERO
- OpenJar STUDIOS
- HYATT REGENCY
- RAY'S PIZZA
- m&m's

**W 47TH STREET**

- ORNER gelatoville
- MANHATTAN BIKE
- THE DICKENS
- STARBUCKS RESERVE
- Morgan Stanley
- MIJA'S
- Lids
- Olive Garden
- ELPHANT EAR-BEST
- ACTORS TEMPLE Congregation Ezrath Israel
- THE SALVATION ARMY
- DUTCH FREDS
- BILTMORE
- THE GALLIVANT TIMES SQUARE
- BROOKLYN CHOP HOUSE STEAKHOUSE
- SAMUEL J FRIEDMAN THEATRE
- BARRYMORE THEATRE
- Hershey CHOCOLATE

NEIGHBORS

**NOAM AZIZ**  
Senior Director  
212.468.5984  
naziz@meridiancapital.com

**CARSON SHAHRABANI**  
Senior Associate  
212.468.5927  
cshahrabani@meridiancapital.com

**MAX FREUDENBERGER**  
Senior Associate  
212.468.5951  
mfreudenberg@meridiancapital.com



**MERIDIAN**  
RETAIL LEASING

All information supplied is from sources deemed reliable and is furnished subject to errors, omissions, modifications, removal of the listing from sale or lease, and to any listing conditions, including the rates and manner of payment of commissions for particular offerings imposed by Meridian Capital Group. This information may include estimates and projections prepared by Meridian Capital Group with respect to future events, and these future events may or may not actually occur. Such estimates and projections reflect various assumptions concerning anticipated results. While Meridian Capital Group believes these assumptions are reasonable, there can be no assurance that any of these estimates and projections will be correct. Therefore, actual results may vary materially from these estimates and projections. Any square footage dimensions set forth are approximate.