

2121

GLEBE AVENUE PARKCHESTER, BRONX

Corner of Glebe & Westchester Avenues

COMMUNITY FACILITY/RETAIL FOR LEASE

APPROXIMATE SIZE

Second Floor: 9,000 SF
Lower Level: 6,000 SF

ASKING RENT

Second Floor: \$30 PSF
Lower Level: \$25 PSF

POSSESSION

Immediate

TERM

Negotiable

COMMENTS

- Private entrance with elevator access
- Basement has extra 1,200 SF room with elevator access
- 18 ft high ceilings
- 25 parking spots included on-site
- Oversized window frontage
- At the base of Planet Fitness gym

NEIGHBORS

Planet Fitness • Papa John's • Ponce Bank • Chase Bank • Carvel • Baskin Robbin's • Dunkin' Donuts • Citi • Boost Mobile • Wendy's • Que Rico Latin Cuisine • Sunoco • Super Fresh

TRANSPORTATION

2 5

NOAM AZIZ

Senior Director
212.468.5984
naziz@meridiancapital.com

DANIEL ZACAİM

Associate
212.468.5910
dzacaim@meridiancapital.com

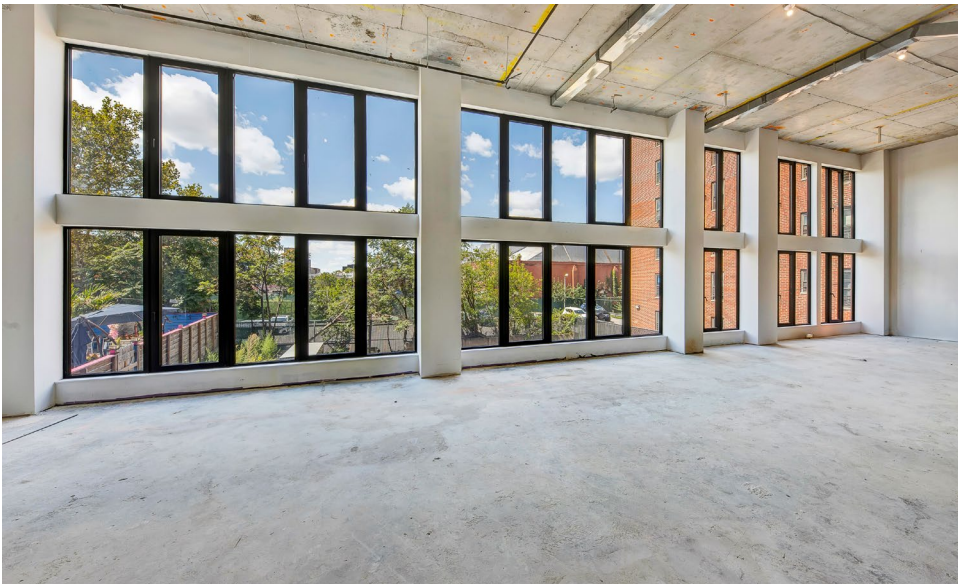
MICHAEL ESCAVA

Associate
212.468.5918
mescava@meridiancapital.com



MERIDIAN
RETAIL LEASING

All information supplied is from sources deemed reliable and is furnished subject to errors, omissions, modifications, removal of the listing from sale or lease, and to any listing conditions, including the rates and manner of payment of commissions for particular offerings imposed by Meridian Capital Group. This information may include estimates and projections prepared by Meridian Capital Group with respect to future events, and these future events may or may not actually occur. Such estimates and projections reflect various assumptions concerning anticipated results. While Meridian Capital Group believes these assumptions are reasonable, there can be no assurance that any of these estimates and projections will be correct. Therefore, actual results may vary materially from these estimates and projections. Any square footage dimensions set forth are approximate.



INTERIOR

NOAM AZIZ
Senior Director
212.468.5984
naziz@meridiancapital.com

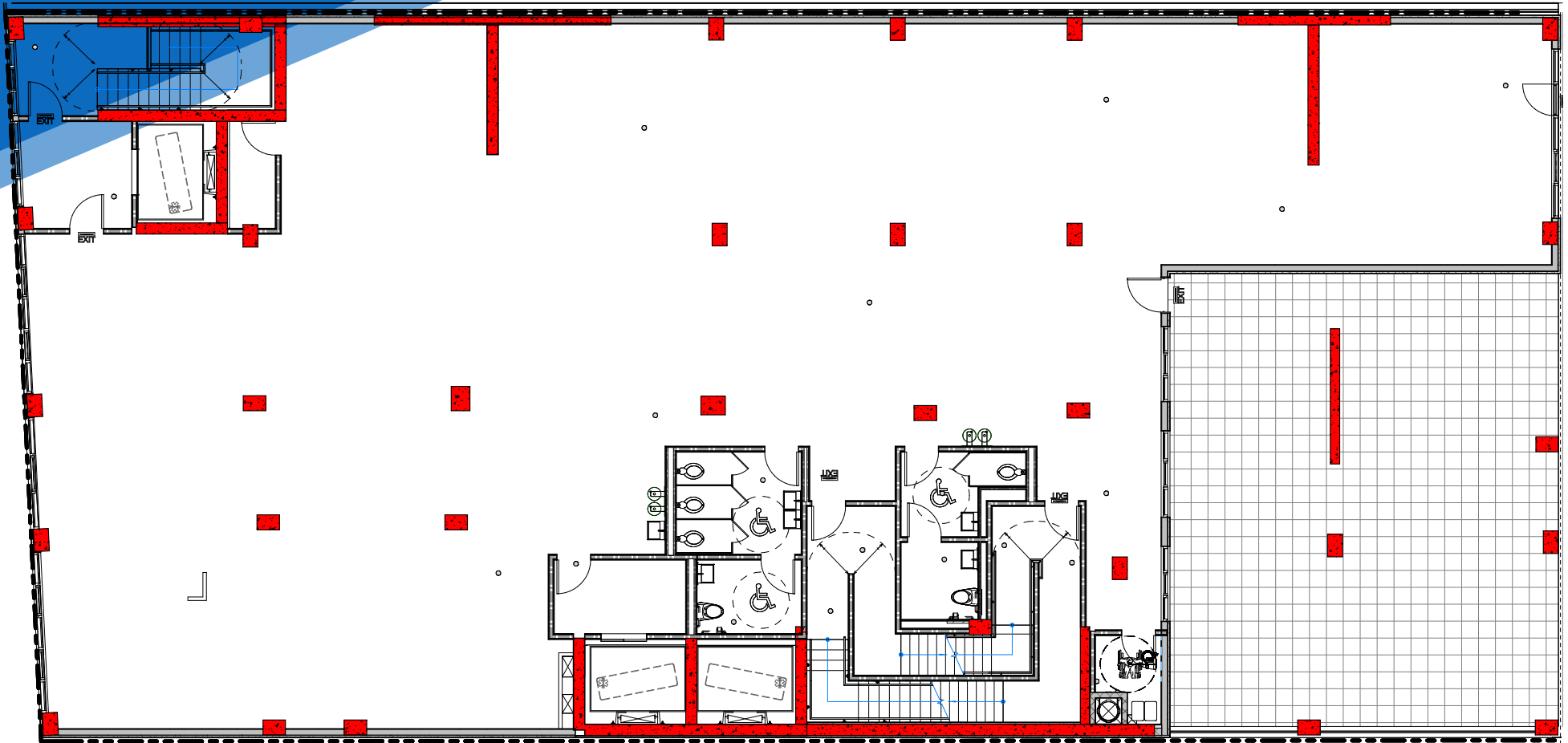
DANIEL ZACAİM
Associate
212.468.5910
dzacaim@meridiancapital.com

MICHAEL ESCAVA
Associate
212.468.5918
mescava@meridiancapital.com



MERIDIAN
RETAIL LEASING

FLOOR PLAN | SECOND FLOOR



NOAM AZIZ
Senior Director
212.468.5984
naziz@meridiancapital.com

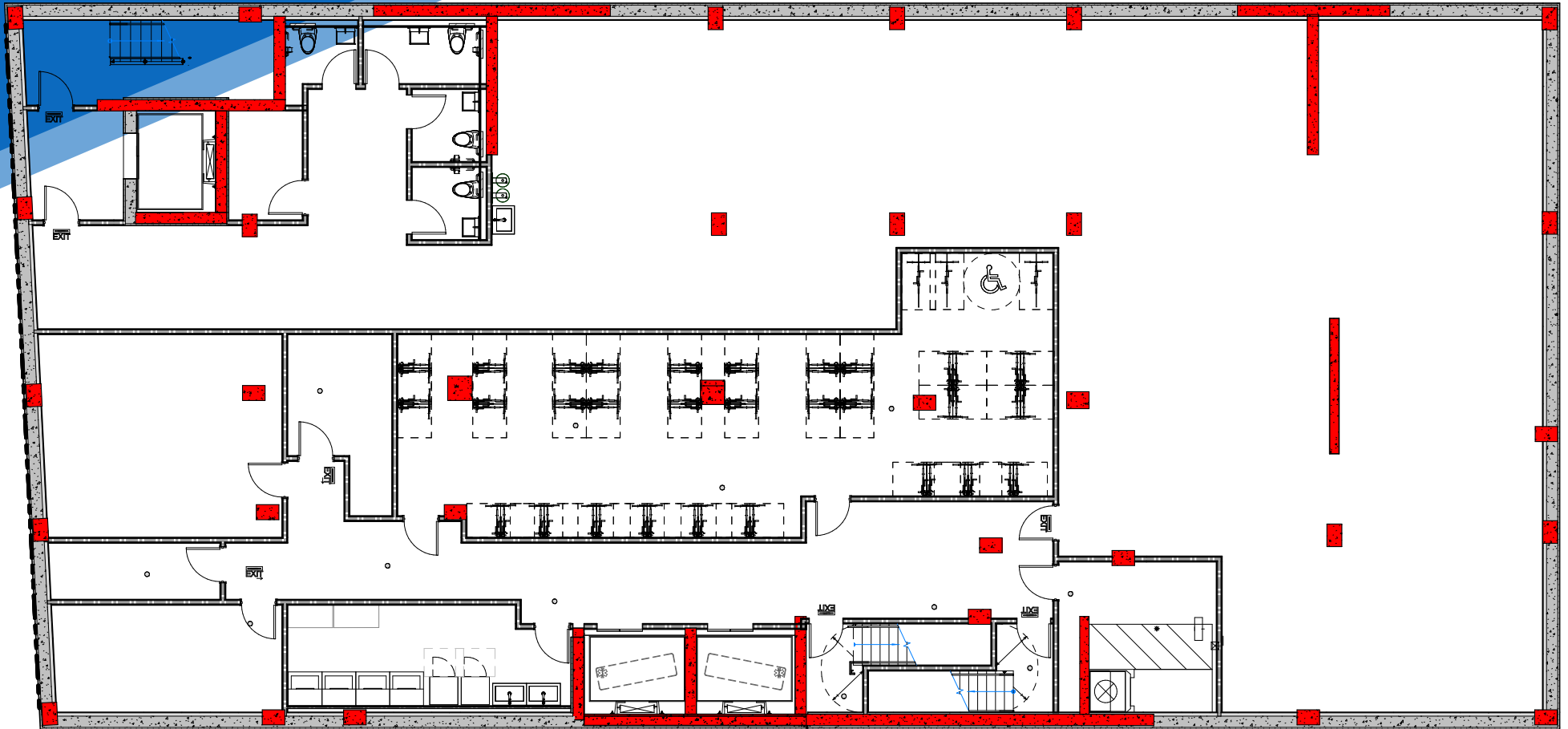
DANIEL ZACAİM
Associate
212.468.5910
dzacaim@meridiancapital.com

MICHAEL ESCAVA
Associate
212.468.5918
mescava@meridiancapital.com



MERIDIAN
RETAIL LEASING

FLOOR PLAN | LOWER LEVEL



NOAM AZIZ
Senior Director
212.468.5984
naziz@meridiancapital.com

DANIEL ZACAİM
Associate
212.468.5910
dzacaim@meridiancapital.com

MICHAEL ESCAVA
Associate
212.468.5918
mescava@meridiancapital.com



MERIDIAN
RETAIL LEASING

2121 GLEBE AVENUE
 PARKCHESTER, BRONX | Corner of Glebe and Westchester Avenues

COMMUNITY FACILITY/RETAIL FOR LEASE

NEIGHBORS



NOAM AZIZ
 Senior Director
 212.468.5984
 naziz@meridiancapital.com

DANIEL ZACAIM
 Associate
 212.468.5910
 dzacaim@meridiancapital.com

MICHAEL ESCAVA
 Associate
 212.468.5918
 mescava@meridiancapital.com



MERIDIAN
 RETAIL LEASING

All information supplied is from sources deemed reliable and is furnished subject to errors, omissions, modifications, removal of the listing from sale or lease, and to any listing conditions, including the rates and manner of payment of commissions for particular offerings imposed by Meridian Capital Group. This information may include estimates and projections prepared by Meridian Capital Group with respect to future events, and these future events may or may not actually occur. Such estimates and projections reflect various assumptions concerning anticipated results. While Meridian Capital Group believes these assumptions are reasonable, there can be no assurance that any of these estimates and projections will be correct. Therefore, actual results may vary materially from these estimates and projections. Any square footage dimensions set forth are approximate.