

1759

WEST FARMS ROAD WEST FARMS, BRONX

Corner of East 174th Street & West Farms Road

RETAIL FOR LEASE

APPROXIMATE SIZE

3,500 SF

ASKING RENT

\$11,500/Month

POSSESSION

Immediate

TERM

Negotiable

FRONTAGE

40 FT Wraparound

COMMENTS

- New development
- Open to divisions
- T.I. available for qualified tenants
- Parking available
- All uses considered

NEIGHBORS

Family Laundromat • Auto Zone • Bryant Pharmacy
• Burger King • Popeyes • TJ Maxx • Champion Paint
Manufacturing • New Horizons Shopping Mall

TRANSPORTATION

2 5



PROPERTY INFORMATION

NOAM AZIZ

Senior Director
212.468.5984
naziz@meridiancapital.com

MICHAEL ESCAVA

Associate
212.468.5918
mescava@meridiancapital.com

DANIEL ZACAİM

Associate
212.468.5910
dzacaim@meridiancapital.com



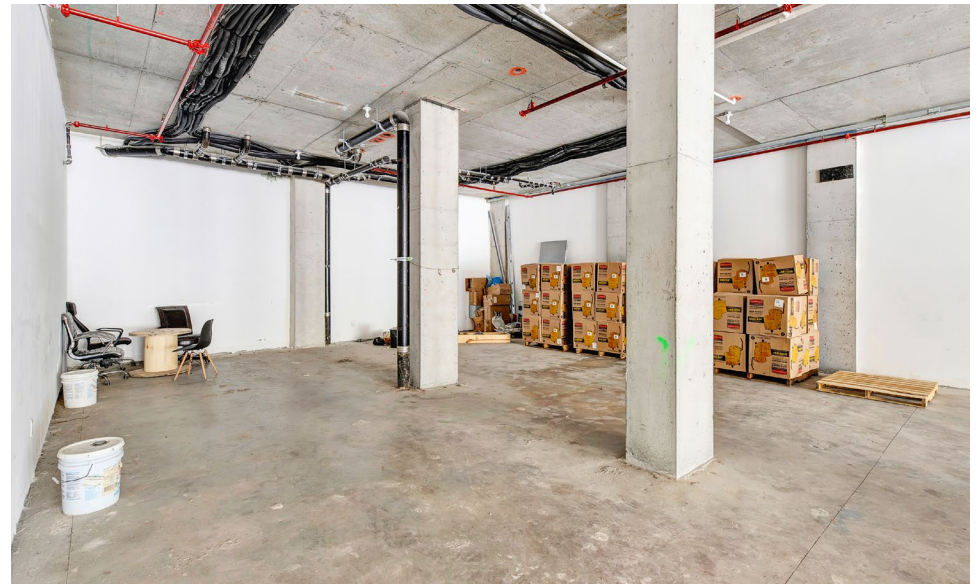
MERIDIAN
RETAIL LEASING

All information supplied is from sources deemed reliable and is furnished subject to errors, omissions, modifications, removal of the listing from sale or lease, and to any listing conditions, including the rates and manner of payment of commissions for particular offerings imposed by Meridian Capital Group. This information may include estimates and projections prepared by Meridian Capital Group with respect to future events, and these future events may or may not actually occur. Such estimates and projections reflect various assumptions concerning anticipated results. While Meridian Capital Group believes these assumptions are reasonable, there can be no assurance that any of these estimates and projections will be correct. Therefore, actual results may vary materially from these estimates and projections. Any square footage dimensions set forth are approximate.

1759 WEST FARMS ROAD

WEST FARMS, BRONX | Corner of East 174th Street and West Farms Road

RETAIL FOR LEASE



INTERIOR

NOAM AZIZ
Senior Director
212.468.5984
naziz@meridiancapital.com

MICHAEL ESCAVA
Associate
212.468.5918
mescava@meridiancapital.com

DANIEL ZACAİM
Associate
212.468.5910
dzacaim@meridiancapital.com



MERIDIAN
RETAIL LEASING

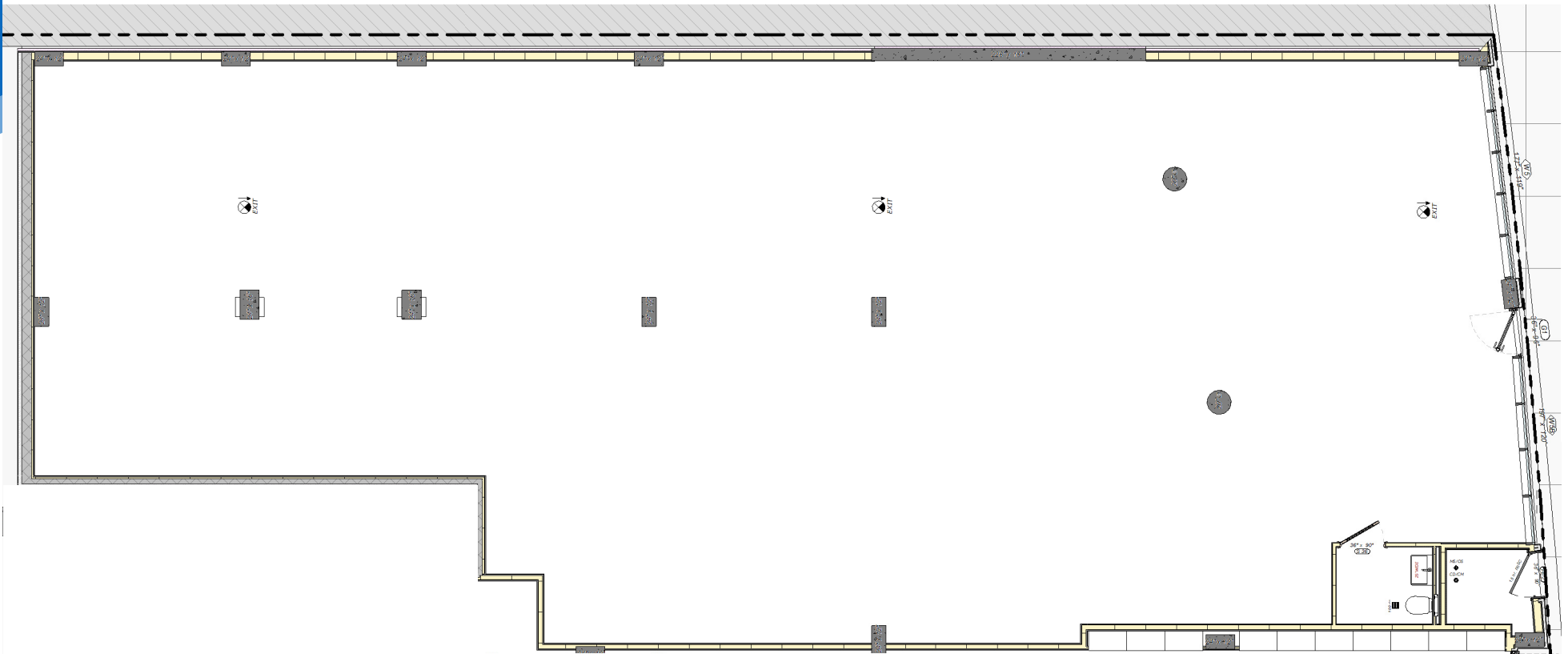
All information supplied is from sources deemed reliable and is furnished subject to errors, omissions, modifications, removal of the listing from sale or lease, and to any listing conditions, including the rates and manner of payment of commissions for particular offerings imposed by Meridian Capital Group. This information may include estimates and projections prepared by Meridian Capital Group with respect to future events, and these future events may or may not actually occur. Such estimates and projections reflect various assumptions concerning anticipated results. While Meridian Capital Group believes these assumptions are reasonable, there can be no assurance that any of these estimates and projections will be correct. Therefore, actual results may vary materially from these estimates and projections. Any square footage dimensions set forth are approximate.

1759 WEST FARMS ROAD

WEST FARMS, BRONX | Corner of East 174th Street and West Farms Road

RETAIL FOR LEASE

FLOOR PLAN



NOAM AZIZ

Senior Director
212.468.5984
naziz@meridiancapital.com

MICHAEL ESCAVA

Associate
212.468.5918
mescava@meridiancapital.com

DANIEL ZACAİM

Associate
212.468.5910
dzacaim@meridiancapital.com



MERIDIAN
RETAIL LEASING

All information supplied is from sources deemed reliable and is furnished subject to errors, omissions, modifications, removal of the listing from sale or lease, and to any listing conditions, including the rates and manner of payment of commissions for particular offerings imposed by Meridian Capital Group. This information may include estimates and projections prepared by Meridian Capital Group with respect to future events, and these future events may or may not actually occur. Such estimates and projections reflect various assumptions concerning anticipated results. While Meridian Capital Group believes these assumptions are reasonable, there can be no assurance that any of these estimates and projections will be correct. Therefore, actual results may vary materially from these estimates and projections. Any square footage dimensions set forth are approximate.

1759 WEST FARMS ROAD

WEST FARMS, BRONX | Corner of East 174th Street and West Farms Road

RETAIL FOR LEASE

NEIGHBORS



NOAM AZIZ
Senior Director
212.468.5984
naziz@meridiancapital.com

MICHAEL ESCAVA
Associate
212.468.5918
mescava@meridiancapital.com

DANIEL ZACAİM
Associate
212.468.5910
dzacaım@meridiancapital.com



MERIDIAN
RETAIL LEASING

All information supplied is from sources deemed reliable and is furnished subject to errors, omissions, modifications, removal of the listing from sale or lease, and to any listing conditions, including the rates and manner of payment of commissions for particular offerings imposed by Meridian Capital Group. This information may include estimates and projections prepared by Meridian Capital Group with respect to future events, and these future events may or may not actually occur. Such estimates and projections reflect various assumptions concerning anticipated results. While Meridian Capital Group believes these assumptions are reasonable, there can be no assurance that any of these estimates and projections will be correct. Therefore, actual results may vary materially from these estimates and projections. Any square footage dimensions set forth are approximate.