

274

BOWERY NOLITA, NYC

Between East Houston & Prince Streets

RETAIL FOR LEASE



APPROXIMATE SIZE

Ground Floor: 2,200 SF
Lower Level: 1,100 SF

ASKING RENT

~~\$21,000/Month~~ Reduced
\$20,000/Month

POSSESSION

Immediate

TERM

Flexible

FRONTAGE

25 FT

COMMENTS

- Newly white-boxed space
- Brand-new HVAC unit
- Can be vented
- Contiguous lower level
- Strong co-tenancy in a high foot traffic area

NEIGHBORS

Whole Foods • La Colombe • Public Hotel
• Gorjana • Still Here NYC • Solidcore •
Plantshed • Buck Mason • Abbode • Sézane
• Dossier • Studs • Freemans • Forsythia • Bar
Louis • Tacombi • Le Labo • Sláinte • Raf's

TRANSPORTATION

B D F M N Q R W 6 J Z

PROPERTY INFORMATION

JACOB MAYER

Director
212.468.5926
jmayer@meridiancapital.com

MARCELO DEMORAES

Associate
212.468.5904
mdemoraes@meridiancapital.com

MICHAEL ESCAVA

Associate
212.468.5918
mescava@meridiancapital.com



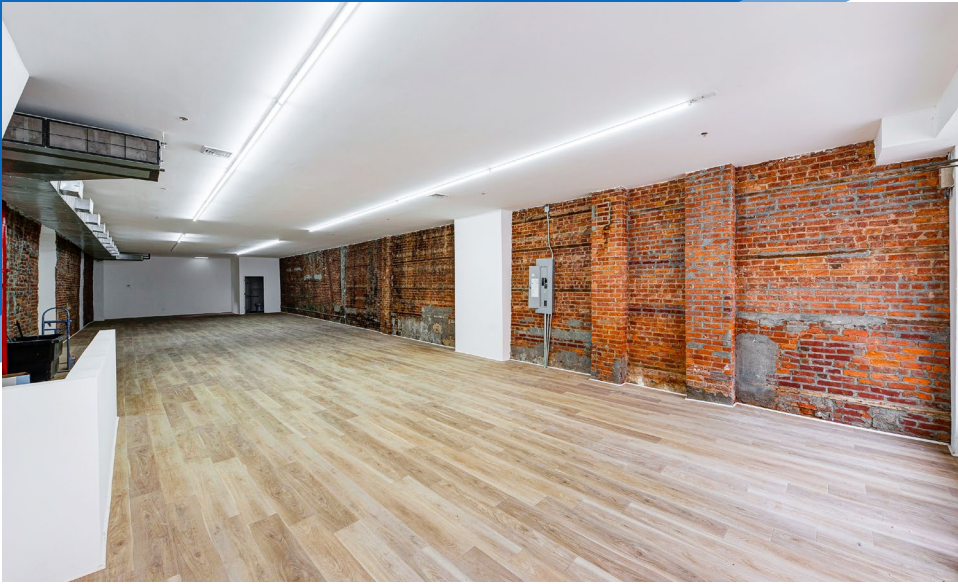
MERIDIAN RETAIL LEASING

All information supplied is from sources deemed reliable and is furnished subject to errors, omissions, modifications, removal of the listing from sale or lease, and to any listing conditions, including the rates and manner of payment of commissions for particular offerings imposed by Meridian Capital Group. This information may include estimates and projections prepared by Meridian Capital Group with respect to future events, and these future events may or may not actually occur. Such estimates and projections reflect various assumptions concerning anticipated results. While Meridian Capital Group believes these assumptions are reasonable, there can be no assurance that any of these estimates and projections will be correct. Therefore, actual results may vary materially from these estimates and projections. Any square footage dimensions set forth are approximate.

274 BOWERY

NOLITA, NYC | Between East Houston and Prince Streets

RETAIL FOR LEASE



INTERIOR

JACOB MAYER

Director
212.468.5926
jmayer@meridiancapital.com

MARCELO DEMORAES

Associate
212.468.5904
mdemoraes@meridiancapital.com

MICHAEL ESCAVA

Associate
212.468.5918
mescava@meridiancapital.com



MERIDIAN
RETAIL LEASING

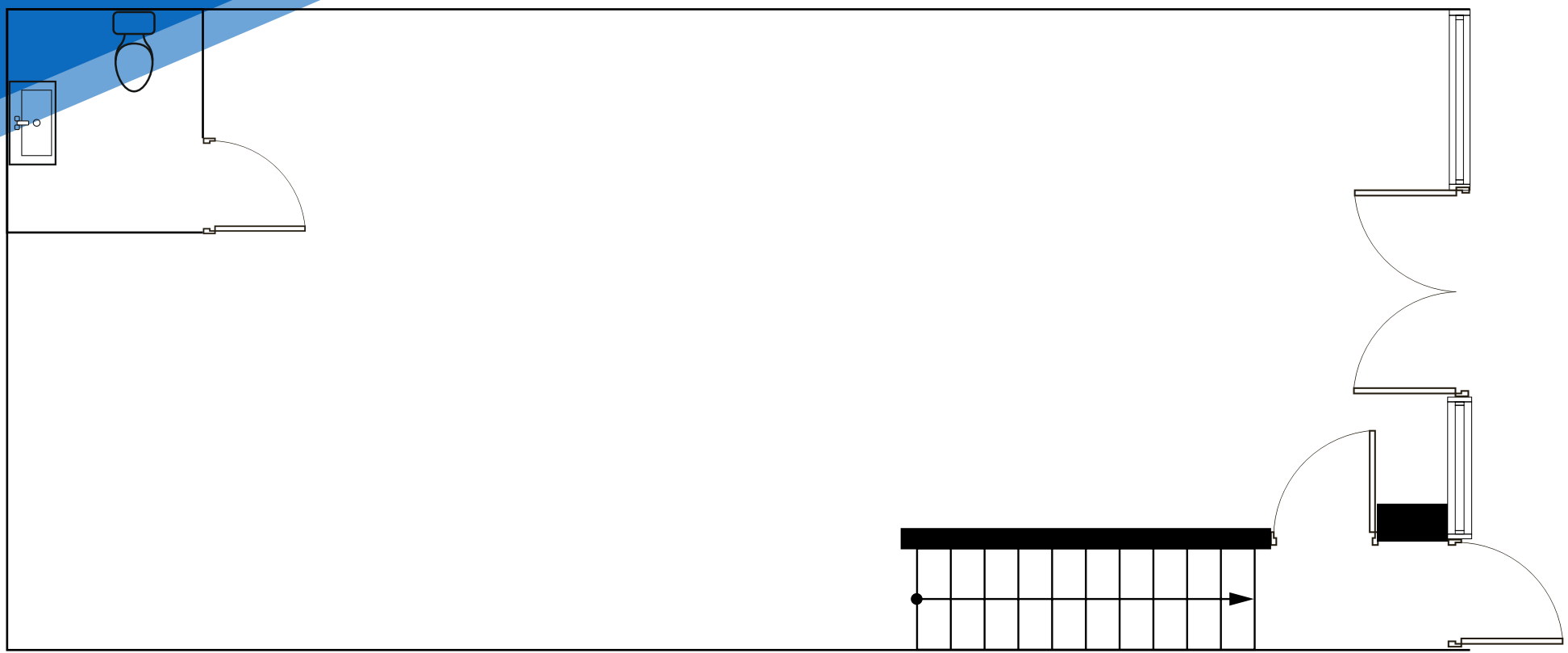
All information supplied is from sources deemed reliable and is furnished subject to errors, omissions, modifications, removal of the listing from sale or lease, and to any listing conditions, including the rates and manner of payment of commissions for particular offerings imposed by Meridian Capital Group. This information may include estimates and projections prepared by Meridian Capital Group with respect to future events, and these future events may or may not actually occur. Such estimates and projections reflect various assumptions concerning anticipated results. While Meridian Capital Group believes these assumptions are reasonable, there can be no assurance that any of these estimates and projections will be correct. Therefore, actual results may vary materially from these estimates and projections. Any square footage dimensions set forth are approximate.

274 BOWERY

NOLITA, NYC | Between East Houston and Prince Streets

RETAIL FOR LEASE

FLOOR PLAN



JACOB MAYER
Director
212.468.5926
jmayer@meridiancapital.com

MARCELO DEMORAES
Associate
212.468.5904
mdemoraes@meridiancapital.com

MICHAEL ESCAVA
Associate
212.468.5918
mescava@meridiancapital.com



MERIDIAN
RETAIL LEASING

All information supplied is from sources deemed reliable and is furnished subject to errors, omissions, modifications, removal of the listing from sale or lease, and to any listing conditions, including the rates and manner of payment of commissions for particular offerings imposed by Meridian Capital Group. This information may include estimates and projections prepared by Meridian Capital Group with respect to future events, and these future events may or may not actually occur. Such estimates and projections reflect various assumptions concerning anticipated results. While Meridian Capital Group believes these assumptions are reasonable, there can be no assurance that any of these estimates and projections will be correct. Therefore, actual results may vary materially from these estimates and projections. Any square footage dimensions set forth are approximate.

274 BOWERY

NOLITA, NYC | Between East Houston and Prince Streets

RETAIL FOR LEASE



NEIGHBORS

JACOB MAYER

Director
212.468.5926
jmayer@meridiancapital.com

MARCELO DEMORAES

Associate
212.468.5904
mdemoraes@meridiancapital.com

MICHAEL ESCAVA

Associate
212.468.5918
mescava@meridiancapital.com



MERIDIAN
RETAIL LEASING

All information supplied is from sources deemed reliable and is furnished subject to errors, omissions, modifications, removal of the listing from sale or lease, and to any listing conditions, including the rates and manner of payment of commissions for particular offerings imposed by Meridian Capital Group. This information may include estimates and projections prepared by Meridian Capital Group with respect to future events, and these future events may or may not actually occur. Such estimates and projections reflect various assumptions concerning anticipated results. While Meridian Capital Group believes these assumptions are reasonable, there can be no assurance that any of these estimates and projections will be correct. Therefore, actual results may vary materially from these estimates and projections. Any square footage dimensions set forth are approximate.