

12

EAST 14TH STREET UNION SQUARE, NYC

Between University Place & Fifth Avenue

RETAIL/RESTAURANT FOR LEASE

APPROXIMATE SIZE

Ground Floor: 4,000 SF
Basement: 1,050 SF

ASKING RENT

\$37,500/Month

POSSESSION

Immediate

TERM

Negotiable

FRONTAGE

30 FT

COMMENTS

- Prime 14th Street / Union Square corridor
- Previously "Boba Box"
- White-box condition open-concept with no columns
- 3 ADA-compliant bathrooms in place

NEIGHBORS

Strip House • Make Up Forever • Panera • Joe and the Juice • Reyna • Lucky Lucky Café • NYU • Lenwich • Blue Bottle Coffee • Lenwich • NAYA • Whole Foods • Game Stop • Taco Bell

TRANSPORTATION



PROPERTY INFORMATION

NOAM AZIZ

Director
212.468.5984
naziz@meridiancapital.com

CARSON SHAHRABANI

Associate
212.468.5927
cshahrabani@meridiancapital.com



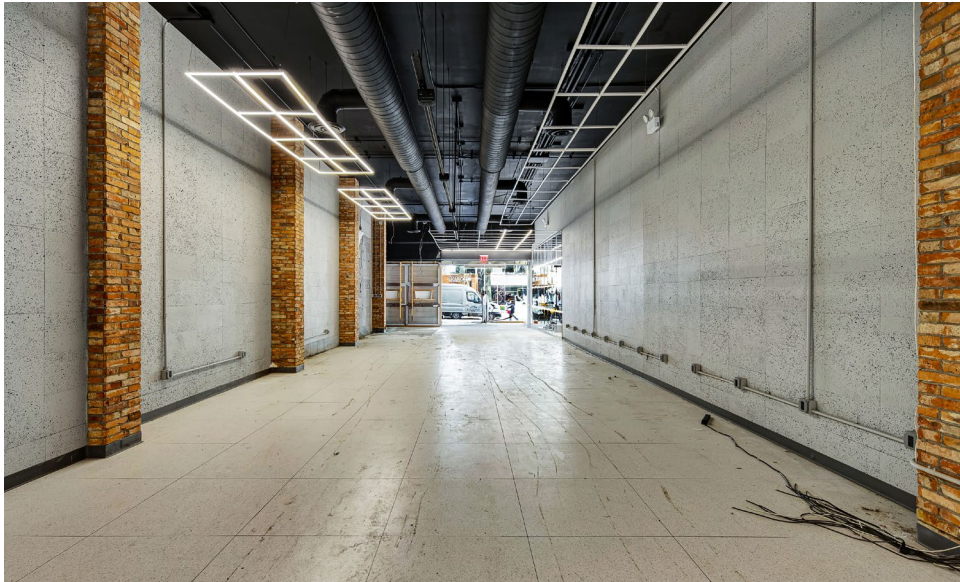
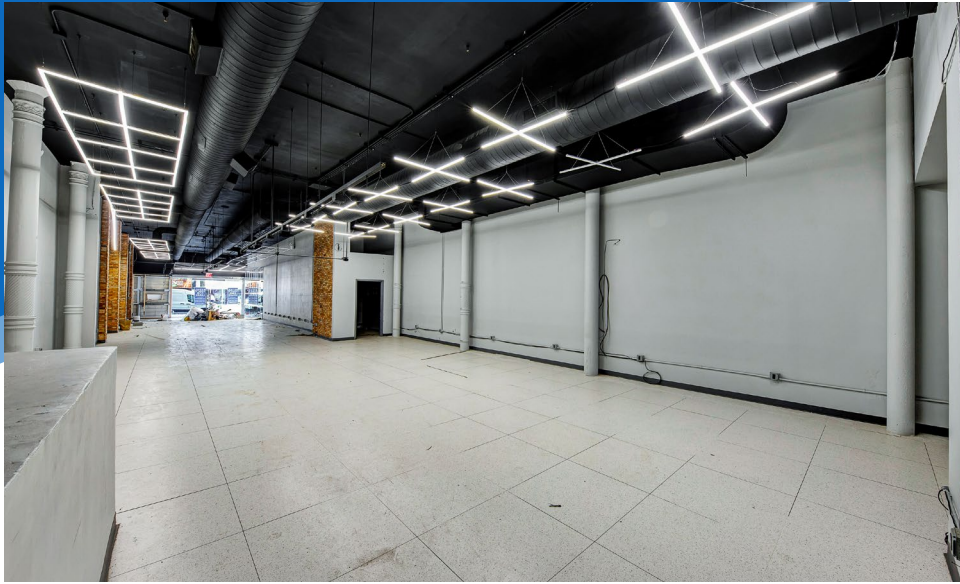
MERIDIAN
RETAIL LEASING

All information supplied is from sources deemed reliable and is furnished subject to errors, omissions, modifications, removal of the listing from sale or lease, and to any listing conditions, including the rates and manner of payment of commissions for particular offerings imposed by Meridian Capital Group. This information may include estimates and projections prepared by Meridian Capital Group with respect to future events, and these future events may or may not actually occur. Such estimates and projections reflect various assumptions concerning anticipated results. While Meridian Capital Group believes these assumptions are reasonable, there can be no assurance that any of these estimates and projections will be correct. Therefore, actual results may vary materially from these estimates and projections. Any square footage dimensions set forth are approximate.

12 EAST 14TH STREET

UNION SQUARE, NYC | Between University Place and Fifth Avenue

RETAIL/RESTAURANT FOR LEASE



INTERIOR

NOAM AZIZ

Director
212.468.5984
naziz@meridiancapital.com

CARSON SHAHRABANI

Associate
212.468.5927
cshahrabani@meridiancapital.com



MERIDIAN
RETAIL LEASING

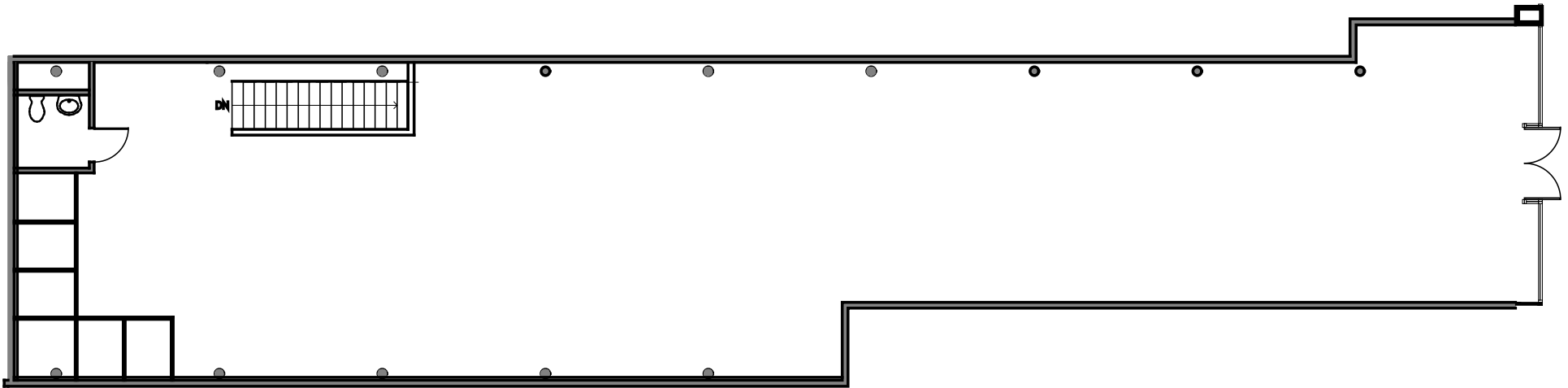
All information supplied is from sources deemed reliable and is furnished subject to errors, omissions, modifications, removal of the listing from sale or lease, and to any listing conditions, including the rates and manner of payment of commissions for particular offerings imposed by Meridian Capital Group. This information may include estimates and projections prepared by Meridian Capital Group with respect to future events, and these future events may or may not actually occur. Such estimates and projections reflect various assumptions concerning anticipated results. While Meridian Capital Group believes these assumptions are reasonable, there can be no assurance that any of these estimates and projections will be correct. Therefore, actual results may vary materially from these estimates and projections. Any square footage dimensions set forth are approximate.

12 EAST 14TH STREET

UNION SQUARE, NYC | Between University Place and Fifth Avenue

RETAIL/RESTAURANT FOR LEASE

FLOOR PLAN



NOAM AZIZ

Director
212.468.5984
naziz@meridiancapital.com

CARSON SHAHRABANI

Associate
212.468.5927
cshahrabani@meridiancapital.com



MERIDIAN
RETAIL LEASING

All information supplied is from sources deemed reliable and is furnished subject to errors, omissions, modifications, removal of the listing from sale or lease, and to any listing conditions, including the rates and manner of payment of commissions for particular offerings imposed by Meridian Capital Group. This information may include estimates and projections prepared by Meridian Capital Group with respect to future events, and these future events may or may not actually occur. Such estimates and projections reflect various assumptions concerning anticipated results. While Meridian Capital Group believes these assumptions are reasonable, there can be no assurance that any of these estimates and projections will be correct. Therefore, actual results may vary materially from these estimates and projections. Any square footage dimensions set forth are approximate.

12 EAST 14TH STREET

UNION SQUARE, NYC | Between University Place and Fifth Avenue

RETAIL/RESTAURANT FOR LEASE

NEIGHBORS



NOAM AZIZ
 Director
 212.468.5984
 naziz@meridiancapital.com

CARSON SHAHRABANI
 Associate
 212.468.5927
 cshahrabani@meridiancapital.com



MERIDIAN
 RETAIL LEASING

All information supplied is from sources deemed reliable and is furnished subject to errors, omissions, modifications, removal of the listing from sale or lease, and to any listing conditions, including the rates and manner of payment of commissions for particular offerings imposed by Meridian Capital Group. This information may include estimates and projections prepared by Meridian Capital Group with respect to future events, and these future events may or may not actually occur. Such estimates and projections reflect various assumptions concerning anticipated results. While Meridian Capital Group believes these assumptions are reasonable, there can be no assurance that any of these estimates and projections will be correct. Therefore, actual results may vary materially from these estimates and projections. Any square footage dimensions set forth are approximate.