

355

EAST 72ND STREET
UPPER EAST SIDE, NYC

Between First & Second Avenues

RETAIL FOR LEASE

APPROXIMATE SIZE

1,000 SF

ASKING RENT

\$11,500/Month

POSSESSION

Immediate

TERM

Negotiable

FRONTAGE

20 FT

COMMENTS

- Prime location in the heart of the Upper East Side
- Situated at the base of a residential building
- Expansive glass frontage with excellent visibility
- Heavy foot traffic
- Non-vented food use accepted

NEIGHBORS

Finnegans Wake • Just Salad • Sweetgreen
CVS • Walgreens Duane Reade • Morton
Williams • Chase Bank • Bank of America •
Citi Bank • Matto • Dominos • Campagnola

TRANSPORTATION



PROPERTY INFORMATION

NOAM AZIZ

Director
212.468.5984
naziz@meridiancapital.com

CARSON SHAHRABANI

Associate
212.468.5927
cshahrabani@meridiancapital.com

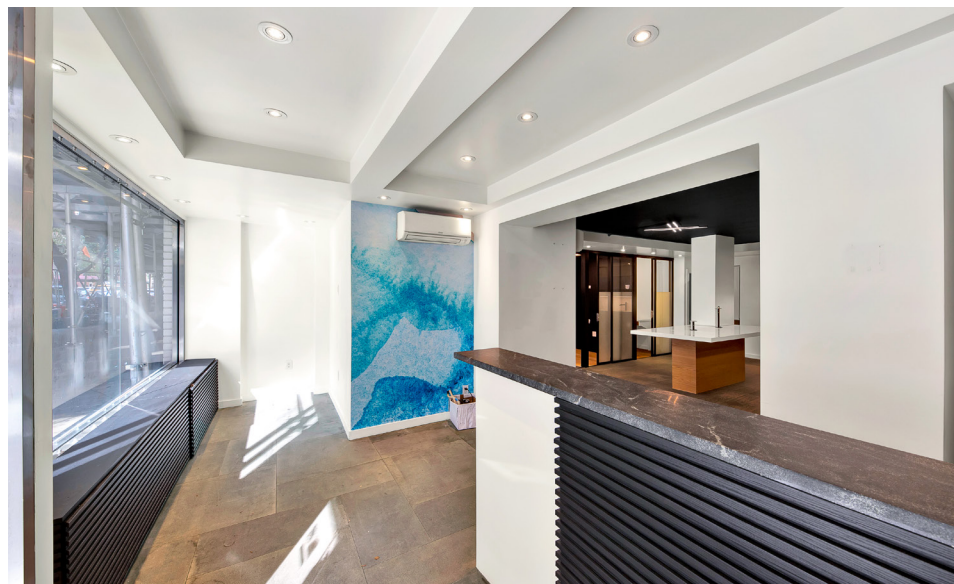
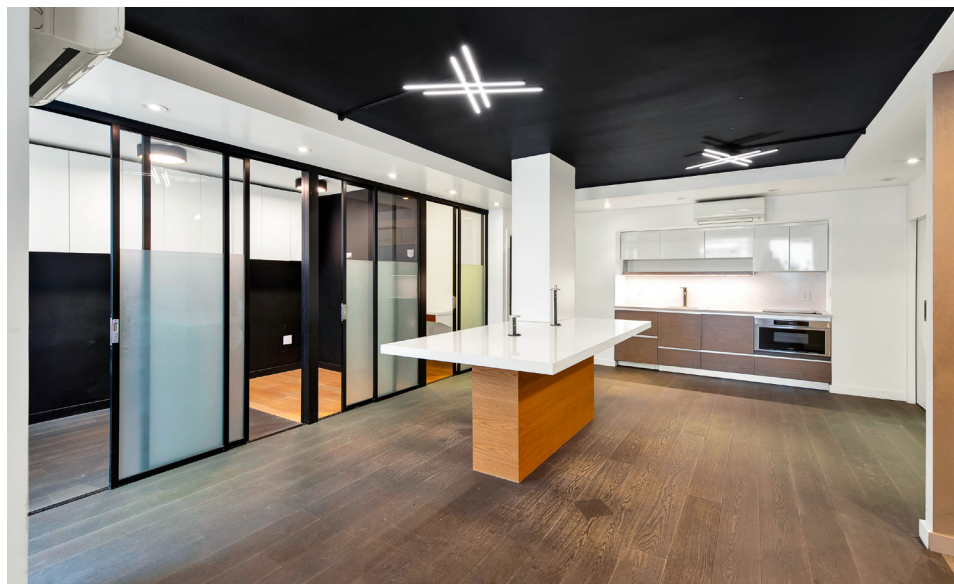


MERIDIAN
RETAIL LEASING

All information supplied is from sources deemed reliable and is furnished subject to errors, omissions, modifications, removal of the listing from sale or lease, and to any listing conditions, including the rates and manner of payment of commissions for particular offerings imposed by Meridian Capital Group. This information may include estimates and projections prepared by Meridian Capital Group with respect to future events, and these future events may or may not actually occur. Such estimates and projections reflect various assumptions concerning anticipated results. While Meridian Capital Group believes these assumptions are reasonable, there can be no assurance that any of these estimates and projections will be correct. Therefore, actual results may vary materially from these estimates and projections. Any square footage dimensions set forth are approximate.

355 EAST 72ND STREET
UPPER EAST SIDE, NYC | Between First and Second Avenues

RETAIL FOR LEASE



INTERIOR

NOAM AZIZ

Director
212.468.5984
naziz@meridiancapital.com

CARSON SHAHRABANI

Associate
212.468.5927
cshahrabani@meridiancapital.com



MERIDIAN
RETAIL LEASING

All information supplied is from sources deemed reliable and is furnished subject to errors, omissions, modifications, removal of the listing from sale or lease, and to any listing conditions, including the rates and manner of payment of commissions for particular offerings imposed by Meridian Capital Group. This information may include estimates and projections prepared by Meridian Capital Group with respect to future events, and these future events may or may not actually occur. Such estimates and projections reflect various assumptions concerning anticipated results. While Meridian Capital Group believes these assumptions are reasonable, there can be no assurance that any of these estimates and projections will be correct. Therefore, actual results may vary materially from these estimates and projections. Any square footage dimensions set forth are approximate.

355 EAST 72ND STREET
UPPER EAST SIDE, NYC | Between First and Second Avenues

RETAIL FOR LEASE

NEIGHBORS

<p>WAGNER COLLEGE EQUINOX</p> <p>E 74TH STREET</p> <p>Liz 74 Laundry & Dry Cleaning</p> <p>NORDSTROM</p> <p>BERNE ADVISORS</p> <p>Blossom Brides</p> <p>Sushi Gama</p> <p>SECOND AVENUE</p>	<p>East Side Grocery</p> <p>The Cathedral School</p> <p>Gnocchi House Bar</p> <p>GRAY ROCK ENTERTAINMENT</p> <p>INTERIOR DESIGN SOLUTIONS</p> <p>IN VINO VERITAS</p> <p>SEFTON</p> <p>First Ave Pet Shop Inc.</p> <p>Cafe Evergreen</p> <p>MEDITERRANEAN GRILL</p> <p>FINNEGANS WAKE</p> <p>FIRST AVENUE</p>	<p>Market Deli & Grocery</p> <p>Flavors NYC Inc</p> <p>CREATIVE CAKES, INC.</p> <p>Smart Barber</p> <p>Delizia 73</p> <p>BOMBAY CHICKEN</p> <p>VANGUARD</p> <p>ZEMA</p> <p>B&B BAGELS</p> <p>Sushi Sasabune</p> <p>Ronald McDonald House New York</p> <p>E 74TH STREET</p>
<p>E 73RD STREET</p> <p>ronen rental</p> <p>Krave Cafe & Deli</p> <p>JAVELINA</p> <p>ups</p> <p>Krave Pizza</p> <p>TIKAL</p> <p>Georgis & Mirgorodsky</p> <p>Winfield</p> <p>SECOND AVENUE</p>	<p>The Corner Deli</p> <p>MISSION CECICHE</p> <p>B.B. Encore</p> <p>Lenox Hill</p> <p>NORTH COMMUNITY</p> <p>355 EAST 72ND STREET</p> <p>CVS pharmacy</p> <p>Fay</p> <p>El Carnalito</p> <p>JP Fine Foods</p> <p>ROTHAUS MD</p> <p>Rolo Renov</p> <p>HOME IMPROVEMENTS</p> <p>FIRST AVENUE</p>	<p>E 73RD STREET</p> <p>NEREade</p> <p>Walgreens</p> <p>Penelope's New York Salon</p> <p>Veki's Hairstyling</p> <p>Maxene Cleaners</p> <p>Seven 2 Hair Inc</p> <p>YORK VETERINARY CENTER</p> <p>ALEX CAFE & DELI</p> <p>73 Laundrymat</p> <p>THE SWEET SHOP</p> <p>COCA HOUSE RESTAURANT</p> <p>E 72ND STREET</p>
<p>E 72ND STREET</p> <p>CHRISTOPHER MAYA INC</p> <p>ARMED</p> <p>San Babila</p> <p>MATTO FIXER</p> <p>iPhone & iPad Screen Repair</p> <p>MANHATTAN CABINETS</p> <p>SISTERS OF LIFE</p> <p>SECOND AVENUE</p>	<p>72ND STREET MEDICAL ASSOCIATES</p> <p>Martha McKittrick RD</p> <p>CITRITION, LLC</p> <p>CHASE</p> <p>vca animal hospitals</p> <p>BLUE DENTAL NYC</p> <p>LEVEL TWO BARBERSHOP</p> <p>Shanghai Chinese Restaurant</p> <p>DIDISHEIM CONSULTING</p> <p>DNA</p> <p>MOON WILLIAMS</p> <p>FIRST AVENUE</p>	<p>E 72ND STREET</p> <p>BANK OF AMERICA</p> <p>Weill Cornell Medicine</p> <p>think pink.</p> <p>72 YORK AVE PIZZA</p> <p>citi</p> <p>archcare Senior Life</p> <p>E 71ST STREET</p>
<p>E 71ST STREET</p> <p>UNITED STATES POSTAL SERVICE</p> <p>bottega restaurant</p> <p>KoSUSHI</p> <p>SECOND AVENUE</p>	<p>VAIL INTERNATIONAL CORP.</p> <p>La Mode First Cleaners</p> <p>sweetgreen</p> <p>Aloha Cleaners</p> <p>701</p> <p>Cafe Luka</p> <p>FIRST AVENUE</p>	<p>E 71ST STREET</p> <p>ACA Acupuncture & Wellness</p> <p>COCOCASA kitchen</p> <p>WE</p> <p>Weill Cornell Medicine</p> <p>JUST SALAD</p> <p>THE COFFEE INN</p> <p>DOSTORO TAQUE</p>

NOAM AZIZ

Director
212.468.5984
naziz@meridiancapital.com

CARSON SHAHRABANI

Associate
212.468.5927
cshahrabani@meridiancapital.com



MERIDIAN
RETAIL LEASING

All information supplied is from sources deemed reliable and is furnished subject to errors, omissions, modifications, removal of the listing from sale or lease, and to any listing conditions, including the rates and manner of payment of commissions for particular offerings imposed by Meridian Capital Group. This information may include estimates and projections prepared by Meridian Capital Group with respect to future events, and these future events may or may not actually occur. Such estimates and projections reflect various assumptions concerning anticipated results. While Meridian Capital Group believes these assumptions are reasonable, there can be no assurance that any of these estimates and projections will be correct. Therefore, actual results may vary materially from these estimates and projections. Any square footage dimensions set forth are approximate.