

3545

WHITE PLAINS ROAD WILLIAMSBRIDGE, BRONX

Between East Gunhill Road &
East 213th Street

RETAIL FOR LEASE

APPROXIMATE SIZE

Ground Floor: 3,500 SF

ASKING RENT

\$15,000/Month

TERM

5 Years

POSSESSION

Immediate

FRONTAGE

45 FT

COMMENTS

- Retail in white-box condition at the base of new development
- Lots of natural light
- Bathroom in place
- Can be vented
- Divisions possible
- Motivated landlord

NEIGHBORS

Popeyes • Dollar General • Green Garden • Dollar Tree • Blink Fitness • Fine Fare • Golden Krust • Zipcar • Davita Kidney Care • Bronx Pawn

TRANSPORTATION



PROPERTY INFORMATION

ALEC NAMDAR

Senior Associate
212.468.5915

anamdard@meridiancapital.com

JOAQUIN CARRILLO

Associate
212.468.5919

jcarrillo@meridiancapital.com



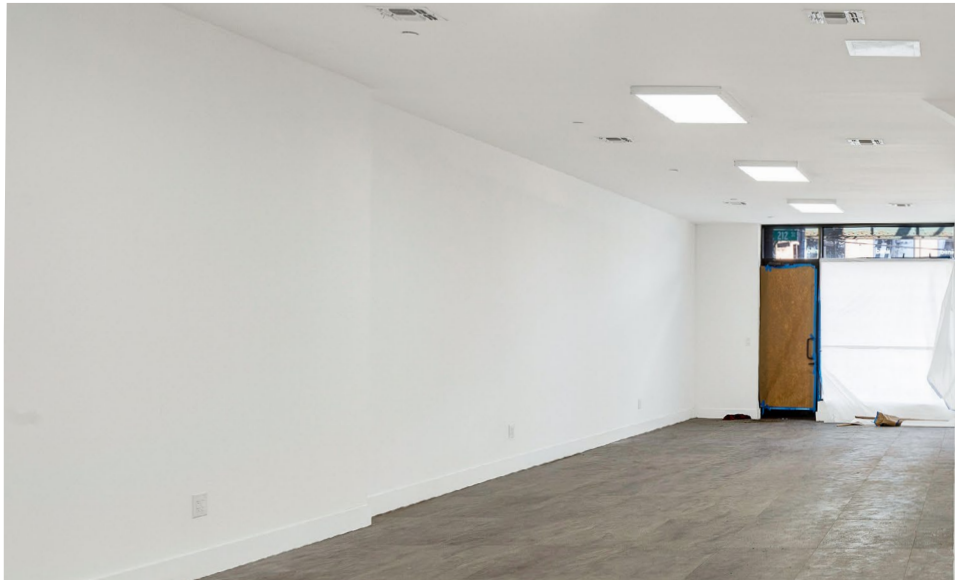
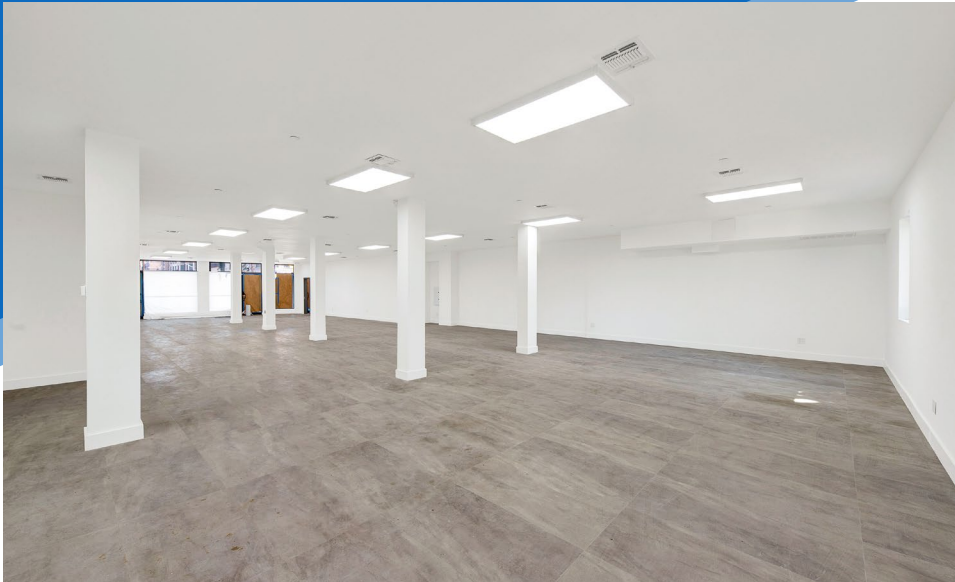
MERIDIAN
RETAIL LEASING

All information supplied is from sources deemed reliable and is furnished subject to errors, omissions, modifications, removal of the listing from sale or lease, and to any listing conditions, including the rates and manner of payment of commissions for particular offerings imposed by Meridian Capital Group. This information may include estimates and projections prepared by Meridian Capital Group with respect to future events, and these future events may or may not actually occur. Such estimates and projections reflect various assumptions concerning anticipated results. While Meridian Capital Group believes these assumptions are reasonable, there can be no assurance that any of these estimates and projections will be correct. Therefore, actual results may vary materially from these estimates and projections. Any square footage dimensions set forth are approximate.

3545 WHITE PLAINS ROAD

WILLIAMSBRIDGE, BRONX | Between East Gunhill Road and East 213th Street

RETAIL FOR LEASE



INTERIOR

ALEC NAMDAR

Senior Associate
212.468.5915

anamdar@meridiancapital.com

JOAQUIN CARRILLO

Associate
212.468.5919

jcarrillo@meridiancapital.com



MERIDIAN
RETAIL LEASING

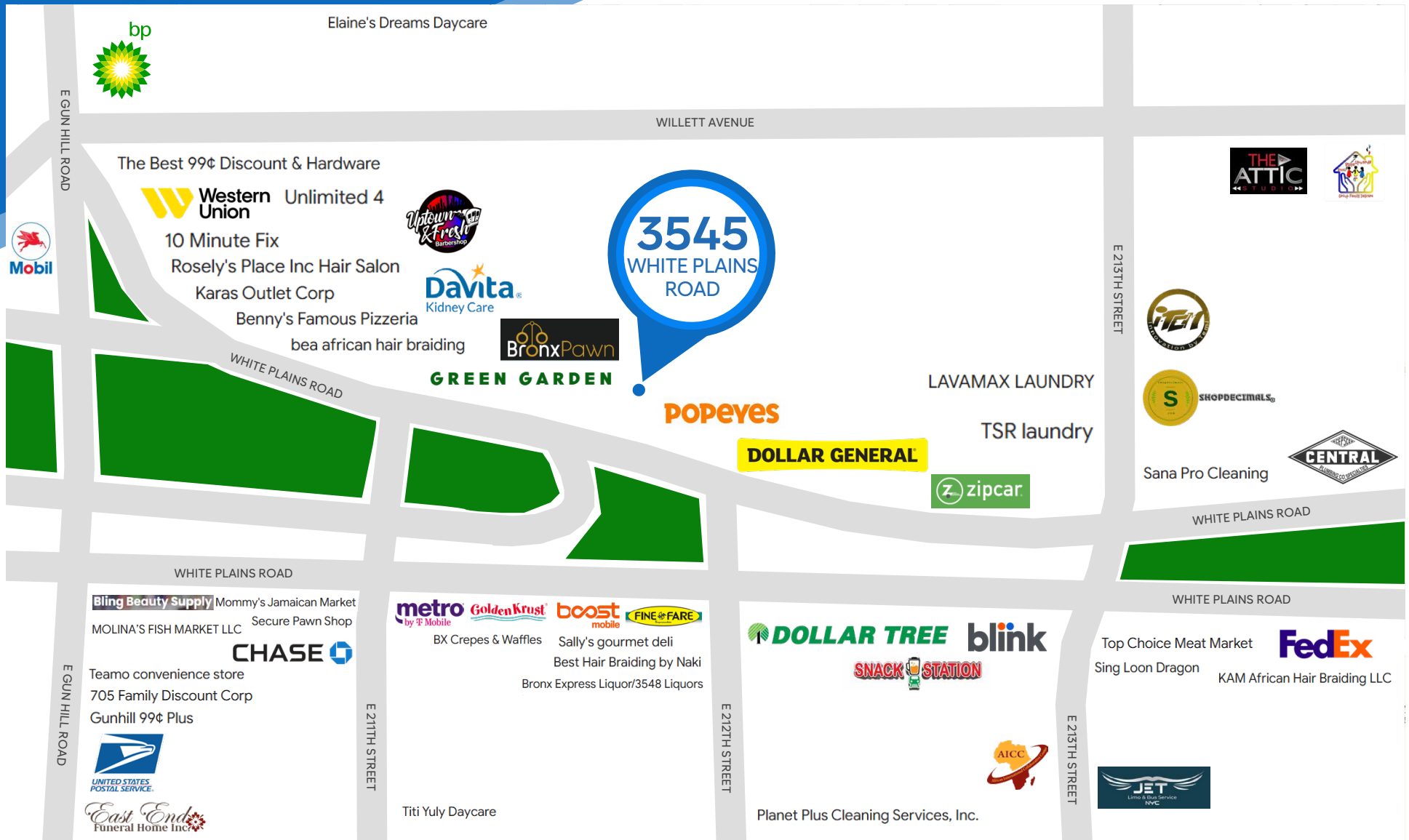
All information supplied is from sources deemed reliable and is furnished subject to errors, omissions, modifications, removal of the listing from sale or lease, and to any listing conditions, including the rates and manner of payment of commissions for particular offerings imposed by Meridian Capital Group. This information may include estimates and projections prepared by Meridian Capital Group with respect to future events, and these future events may or may not actually occur. Such estimates and projections reflect various assumptions concerning anticipated results. While Meridian Capital Group believes these assumptions are reasonable, there can be no assurance that any of these estimates and projections will be correct. Therefore, actual results may vary materially from these estimates and projections. Any square footage dimensions set forth are approximate.

3545 WHITE PLAINS ROAD

WILLIAMSBRIDGE, BRONX | Between East Gunhill Road and East 213th Street

RETAIL FOR LEASE

NEIGHBORS



ALEC NAMDAR

Senior Associate
212.468.5915
anamdard@meridiancapital.com

JOAQUIN CARRILLO

Associate
212.468.5919
jcarrillo@meridiancapital.com



MERIDIAN
RETAIL LEASING

All information supplied is from sources deemed reliable and is furnished subject to errors, omissions, modifications, removal of the listing from sale or lease, and to any listing conditions, including the rates and manner of payment of commissions for particular offerings imposed by Meridian Capital Group. This information may include estimates and projections prepared by Meridian Capital Group with respect to future events, and these future events may or may not actually occur. Such estimates and projections reflect various assumptions concerning anticipated results. While Meridian Capital Group believes these assumptions are reasonable, there can be no assurance that any of these estimates and projections will be correct. Therefore, actual results may vary materially from these estimates and projections. Any square footage dimensions set forth are approximate.