

# 325

## CHURCH STREET TRIBECA, NYC

Between Lispenard & Canal Streets

RESTAURANT/RETAIL FOR LEASE

### APPROXIMATE SIZE

Ground Floor: 907 SF

Lower Level: 777 SF

### ASKING RENT

\$14,000/Month

### POSSESSION

Immediate

### TERM

1-10 Years

### FRONTAGE

12 FT

### COMMENTS

- Second generation restaurant, previously "Saluggi's"
- Fully vented with gas kitchen and previous liquor license
- Easily accessible, steps from 11 different subway lines
- Prime Tribeca location with steady traffic
- All uses considered

### NEIGHBORS

Church Street Surplus • Freight + Volume •  
333Studio • Canal Smoke, Gift & Convenience  
• La Colombe • Roman K Salon • Tribeca Skin  
Center • Drake's • Origins NYC • Sheraton  
• Pepolino • The Palace • Starbucks •  
Pollo Campero • Blue Bottle Coffee

### TRANSPORTATION

A C E N Q R W J Z 1 6

### JAMES FAMULARO

President  
646.658.7373  
jfamularo@meridiancapital.com

### BOBBY ORTENSE

Director  
212.468.5953  
bortense@meridiancapital.com



**MERIDIAN**  
RETAIL LEASING

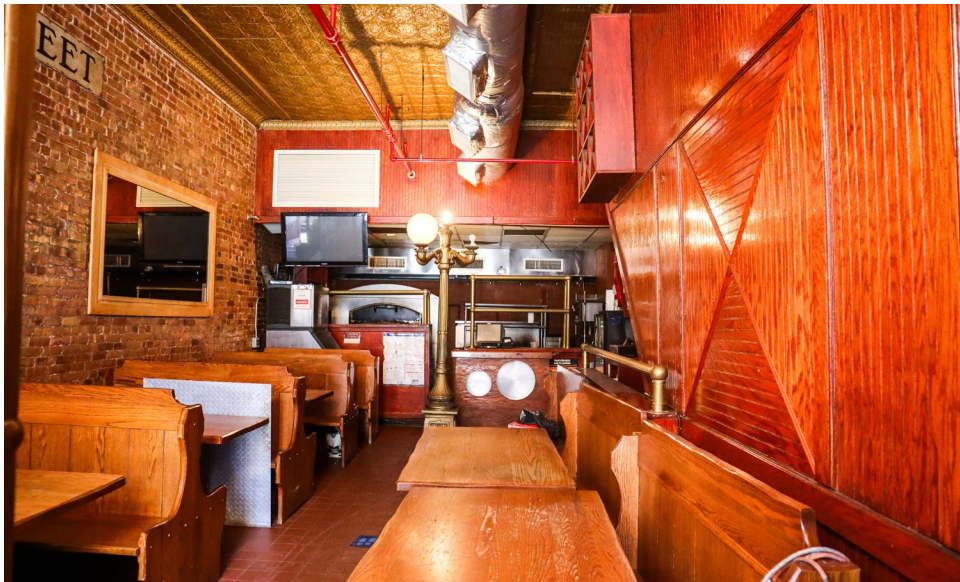
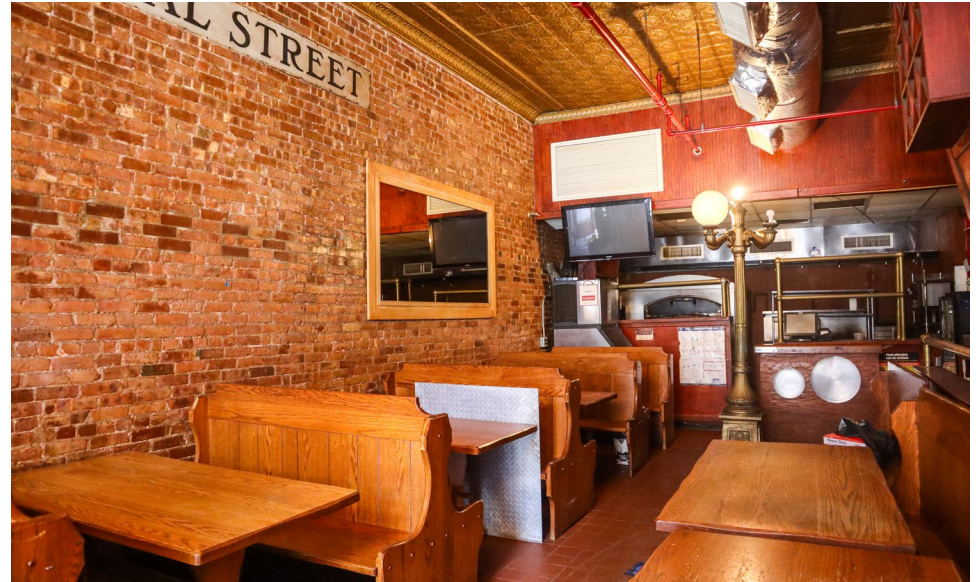
All information supplied is from sources deemed reliable and is furnished subject to errors, omissions, modifications, removal of the listing from sale or lease, and to any listing conditions, including the rates and manner of payment of commissions for particular offerings imposed by Meridian Capital Group. This information may include estimates and projections prepared by Meridian Capital Group with respect to future events, and these future events may or may not actually occur. Such estimates and projections reflect various assumptions concerning anticipated results. While Meridian Capital Group believes these assumptions are reasonable, there can be no assurance that any of these estimates and projections will be correct. Therefore, actual results may vary materially from these estimates and projections. Any square footage dimensions set forth are approximate.



## 325 CHURCH STREET

TRIBECA, NYC | Between Lispenard and Canal Streets

RESTAURANT/RETAIL FOR LEASE



FLOOR PLAN

### JAMES FAMULARO

President  
646.658.7373  
jfamularo@meridiancapital.com

### BOBBY ORTENSE

Director  
212.468.5953  
bortense@meridiancapital.com



**MERIDIAN**  
RETAIL LEASING

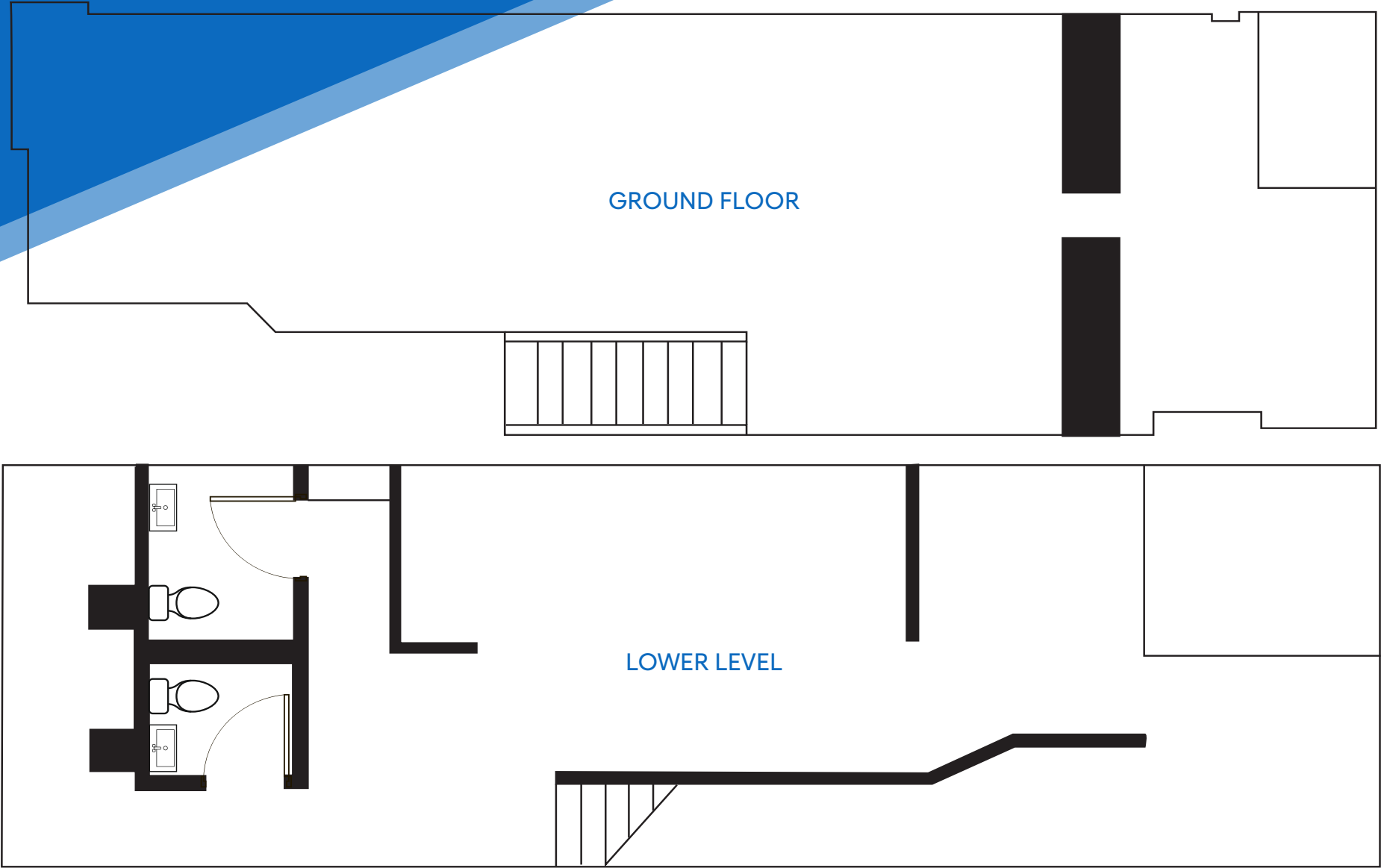
All information supplied is from sources deemed reliable and is furnished subject to errors, omissions, modifications, removal of the listing from sale or lease, and to any listing conditions, including the rates and manner of payment of commissions for particular offerings imposed by Meridian Capital Group. This information may include estimates and projections prepared by Meridian Capital Group with respect to future events, and these future events may or may not actually occur. Such estimates and projections reflect various assumptions concerning anticipated results. While Meridian Capital Group believes these assumptions are reasonable, there can be no assurance that any of these estimates and projections will be correct. Therefore, actual results may vary materially from these estimates and projections. Any square footage dimensions set forth are approximate.



325 CHURCH STREET  
TRIBECA, NYC | Between Lispenard and Canal Streets

RESTAURANT/RETAIL FOR LEASE

FLOOR PLANS



JAMES FAMULARO

President  
646.658.7373  
jfamularo@meridiancapital.com

BOBBY ORTENSE

Director  
212.468.5953  
bortense@meridiancapital.com



**MERIDIAN**  
RETAIL LEASING

All information supplied is from sources deemed reliable and is furnished subject to errors, omissions, modifications, removal of the listing from sale or lease, and to any listing conditions, including the rates and manner of payment of commissions for particular offerings imposed by Meridian Capital Group. This information may include estimates and projections prepared by Meridian Capital Group with respect to future events, and these future events may or may not actually occur. Such estimates and projections reflect various assumptions concerning anticipated results. While Meridian Capital Group believes these assumptions are reasonable, there can be no assurance that any of these estimates and projections will be correct. Therefore, actual results may vary materially from these estimates and projections. Any square footage dimensions set forth are approximate.

TRIBECA, NYC | Between Lispenard and Canal Streets

## NEIGHBORS



President  
646.658.7373  
jfamularo@meridiancapital.com

Director  
212.468.5953  
bortense@meridiancapital.com



## MERIDIAN RETAIL LEASING

All information supplied is from sources deemed reliable and is furnished subject to errors, omissions, modifications, removal of the listing from sale or lease, and to any listing conditions, including the rates and manner of payment of commissions for particular offerings imposed by Meridian Capital Group. This information may include estimates and projections prepared by Meridian Capital Group with respect to future events, and these future events may or may not actually occur. Such estimates and projections reflect various assumptions concerning anticipated results. While Meridian Capital Group believes these assumptions are reasonable, there can be no assurance that any of these estimates and projections will be correct. Therefore, actual results may vary materially from these estimates and projections. Any square footage dimensions set forth are approximate.