

2741

FULTON STREET CYPRESS HILLS, BROOKLYN

Between Bradford Street & Miller Avenue

RETAIL FOR LEASE

APPROXIMATE SIZE

Ground Floor: 600 SF
Garage: 470 SF

ASKING RENT

Upon Request

POSSESSION

Immediate

TERM

Negotiable

FRONTAGE

15 FT on Bradford Street

COMMENTS

- Located at the base of a luxury building
- Ceiling height: 9 feet 4 inches
- Floor-to-ceiling windows
- Open layout and private bathroom
- Can be leased with or without the garage

NEIGHBORS

NAPA • DRD Auto • Kennedy Fried Chicken
• Super 8 Hotel • Sweets & Things • ProSkin
Aesthetics • Lavaga Grocery • Habibi Gourmet
Deli • Toro Taxes • Shop Fair Market

TRANSPORTATION

A C J Z L MTA Long Island Rail Road

JACOB MAYER

Director
212.468.5926
jmayer@meridiancapital.com

SHAYA KATZ

Associate
212.468.5991
shaya.katz@meridiancapital.com

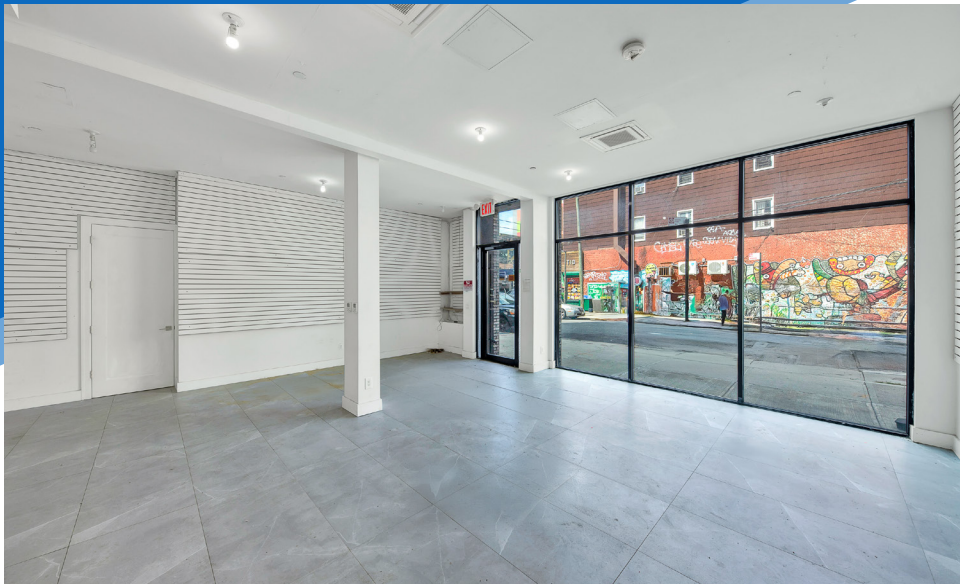


MERIDIAN
RETAIL LEASING

All information supplied is from sources deemed reliable and is furnished subject to errors, omissions, modifications, removal of the listing from sale or lease, and to any listing conditions, including the rates and manner of payment of commissions for particular offerings imposed by Meridian Capital Group. This information may include estimates and projections prepared by Meridian Capital Group with respect to future events, and these future events may or may not actually occur. Such estimates and projections reflect various assumptions concerning anticipated results. While Meridian Capital Group believes these assumptions are reasonable, there can be no assurance that any of these estimates and projections will be correct. Therefore, actual results may vary materially from these estimates and projections. Any square footage dimensions set forth are approximate.

2741 FULTON STREET
CYPRESS HILLS, BROOKLYN | Between Bradford Street and Miller Avenue

RETAIL FOR LEASE



INTERIOR

JACOB MAYER

Director
212.468.5926
jmayer@meridiancapital.com

SHAYA KATZ

Associate
212.468.5991
shaya.katz@meridiancapital.com



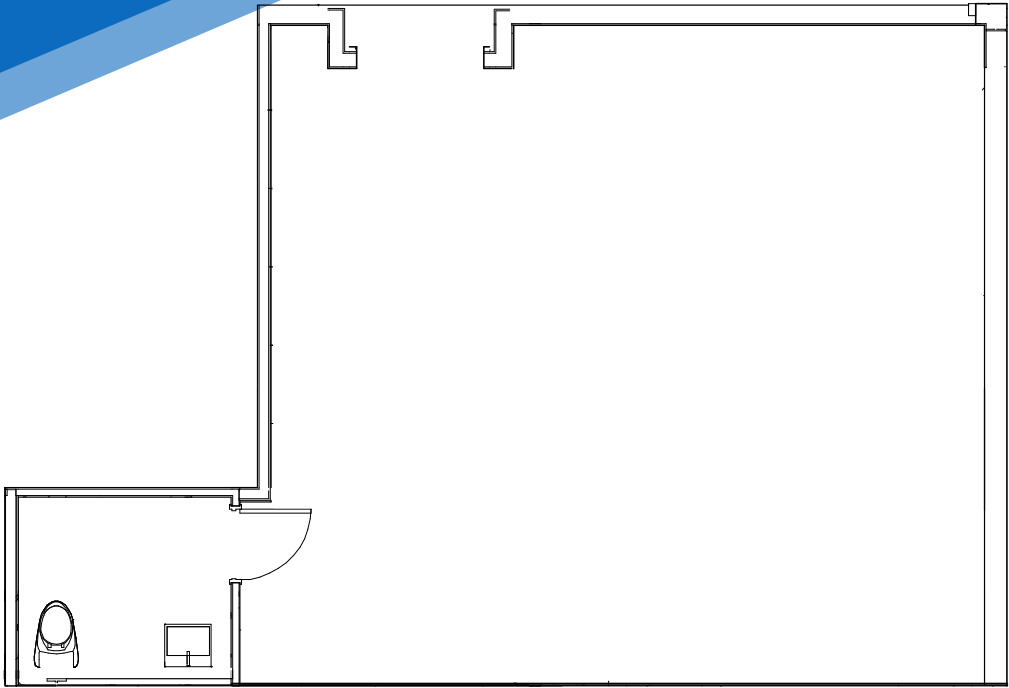
MERIDIAN
RETAIL LEASING

All information supplied is from sources deemed reliable and is furnished subject to errors, omissions, modifications, removal of the listing from sale or lease, and to any listing conditions, including the rates and manner of payment of commissions for particular offerings imposed by Meridian Capital Group. This information may include estimates and projections prepared by Meridian Capital Group with respect to future events, and these future events may or may not actually occur. Such estimates and projections reflect various assumptions concerning anticipated results. While Meridian Capital Group believes these assumptions are reasonable, there can be no assurance that any of these estimates and projections will be correct. Therefore, actual results may vary materially from these estimates and projections. Any square footage dimensions set forth are approximate.

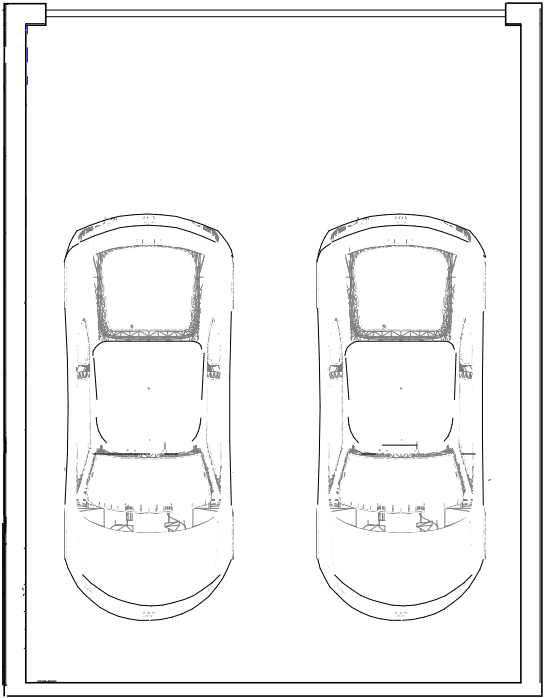
2741 FULTON STREET
CYPRESS HILLS, BROOKLYN | Between Bradford Street and Miller Avenue

RETAIL FOR LEASE

ENTRANCE ON BRADFORD STREET



GROUND FLOOR



GARAGE

FLOOR PLAN

JACOB MAYER
Director
212.468.5926
jmayer@meridiancapital.com

SHAYA KATZ
Associate
212.468.5991
shaya.katz@meridiancapital.com



MERIDIAN
RETAIL LEASING

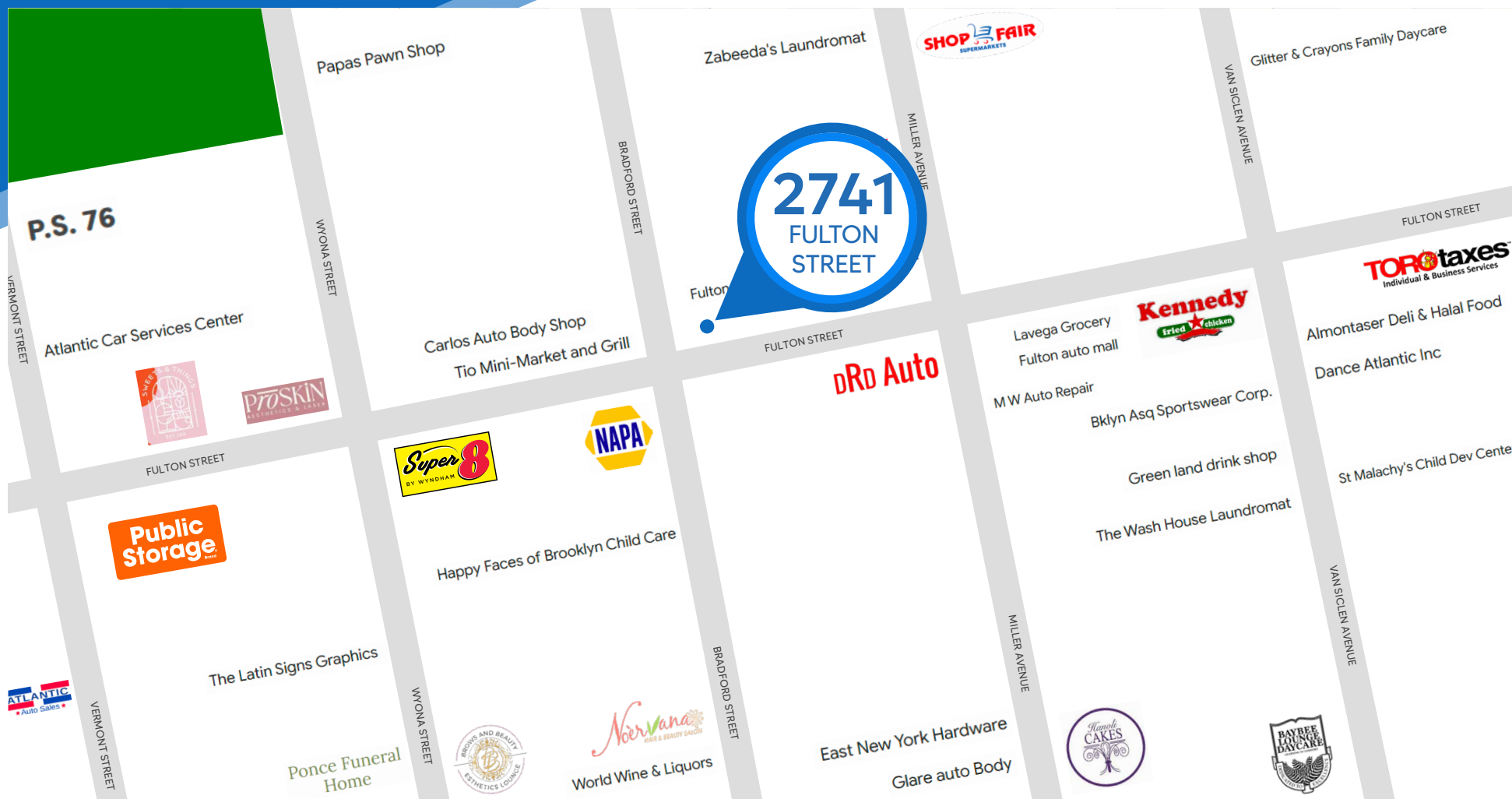
All information supplied is from sources deemed reliable and is furnished subject to errors, omissions, modifications, removal of the listing from sale or lease, and to any listing conditions, including the rates and manner of payment of commissions for particular offerings imposed by Meridian Capital Group. This information may include estimates and projections prepared by Meridian Capital Group with respect to future events, and these future events may or may not actually occur. Such estimates and projections reflect various assumptions concerning anticipated results. While Meridian Capital Group believes these assumptions are reasonable, there can be no assurance that any of these estimates and projections will be correct. Therefore, actual results may vary materially from these estimates and projections. Any square footage dimensions set forth are approximate.

2741 FULTON STREET

CYPRESS HILLS, BROOKLYN | Between Bradford Street and Miller Avenue

RETAIL FOR LEASE

NEIGHBORS



JACOB MAYER

Director
212.468.5926
jmayer@meridiancapital.com

SHAYA KATZ

Associate
212.468.5991
shaya.katz@meridiancapital.com



MERIDIAN
RETAIL LEASING

All information supplied is from sources deemed reliable and is furnished subject to errors, omissions, modifications, removal of the listing from sale or lease, and to any listing conditions, including the rates and manner of payment of commissions for particular offerings imposed by Meridian Capital Group. This information may include estimates and projections prepared by Meridian Capital Group with respect to future events, and these future events may or may not actually occur. Such estimates and projections reflect various assumptions concerning anticipated results. While Meridian Capital Group believes these assumptions are reasonable, there can be no assurance that any of these estimates and projections will be correct. Therefore, actual results may vary materially from these estimates and projections. Any square footage dimensions set forth are approximate.