

# 261

**BOWERY**  
NOLITA, NYC

Between Prince & East Houston Streets

RETAIL/RESTAURANT FOR LEASE

#### APPROXIMATE SIZE

Ground Floor: 2,500 SF  
Storage Basement: 2,500 SF

#### POSSESSION

Immediate

#### ASKING RENT

\$19,995/Month

#### CEILING HEIGHT

12 FT

#### TERM

Negotiable

#### FRONTAGE

25 FT

#### COMMENTS

- Prime Bowery location at the crossroads of Nolita, LES, East Village, and NoHo
- Clean white-boxed space with brand-new storefront
- Space can easily be vented through set back in rear of premises
- 400 AMPs electric service
- Landlord work / T.I. package available for qualified operators
- Nestled between Public Hotel and thriving Nolita shopping corridor
- All quality uses considered

#### NEIGHBORS

Yonah Schimmel's • Whole Foods • Spicy Moon • Prince Street Pizza • Forysthia • Bar Veloce • Morganstern's Bananas • Maison Nur • Plantshed • Aesop • MALIN + GOETZ • Tacombi • La Colombe Coffee

#### TRANSPORTATION

B D F M R W 6 J Z



#### GARRETT KELLY

Director  
212.468.5939  
gkelly@meridiancapital.com

#### NOAM AZIZ

Director  
212.468.5984  
naziz@meridiancapital.com

#### CARSON SHAHRABANI

Associate  
212.468.5927  
cshahrabani@meridiancapital.com



**MERIDIAN**  
RETAIL LEASING

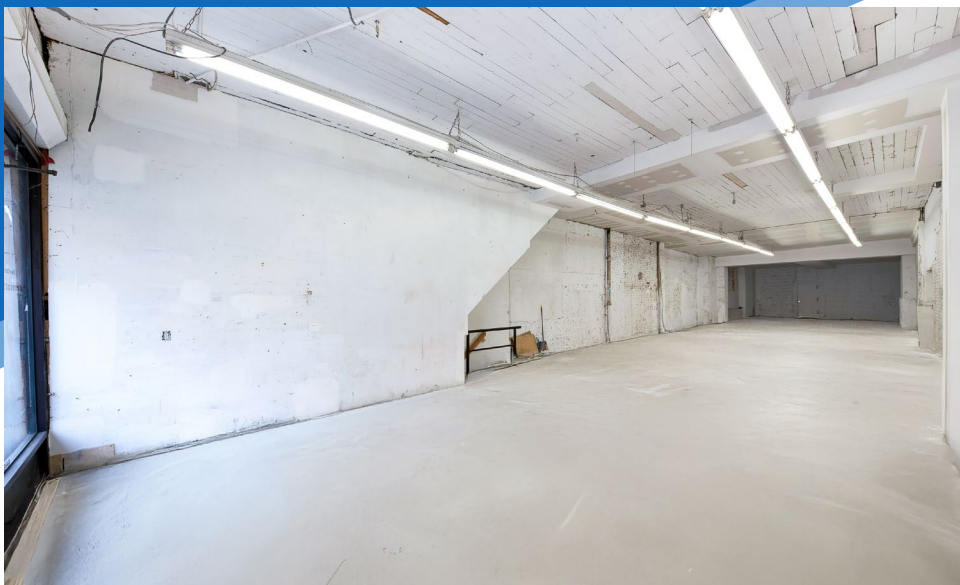
All information supplied is from sources deemed reliable and is furnished subject to errors, omissions, modifications, removal of the listing from sale or lease, and to any listing conditions, including the rates and manner of payment of commissions for particular offerings imposed by Meridian Capital Group. This information may include estimates and projections prepared by Meridian Capital Group with respect to future events, and these future events may or may not actually occur. Such estimates and projections reflect various assumptions concerning anticipated results. While Meridian Capital Group believes these assumptions are reasonable, there can be no assurance that any of these estimates and projections will be correct. Therefore, actual results may vary materially from these estimates and projections. Any square footage dimensions set forth are approximate.



## 261 BOWERY

NOLITA, NYC | Between Prince and East Houston Streets

RETAIL/RESTAURANT FOR LEASE



INTERIOR

### GARRETT KELLY

Director  
212.468.5939  
[gkelly@meridiancapital.com](mailto:gkelly@meridiancapital.com)

### NOAM AZIZ

Director  
212.468.5984  
[naziz@meridiancapital.com](mailto:naziz@meridiancapital.com)

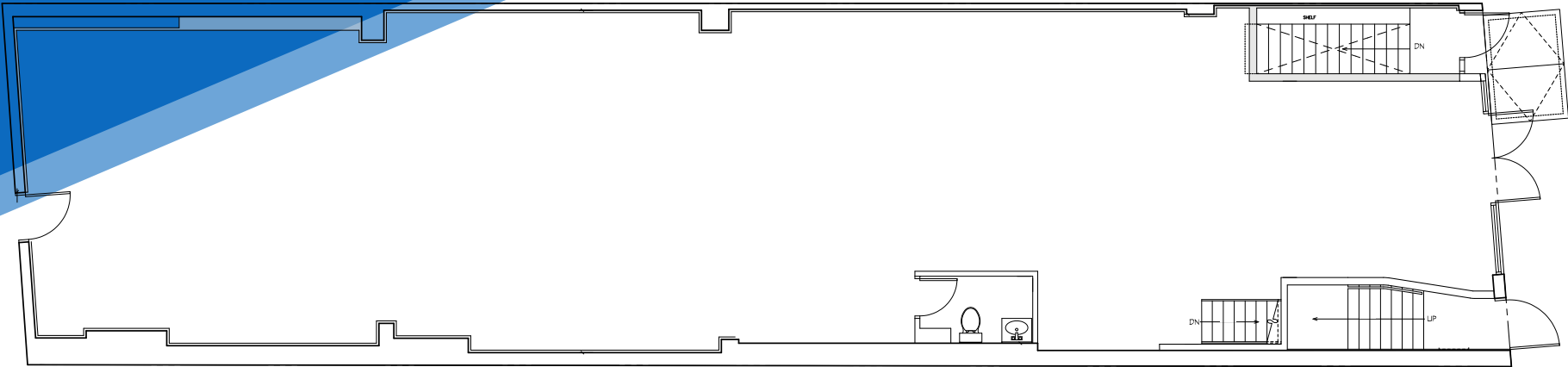
### CARSON SHAHRABANI

Associate  
212.468.5927  
[cshahrabani@meridiancapital.com](mailto:cshahrabani@meridiancapital.com)

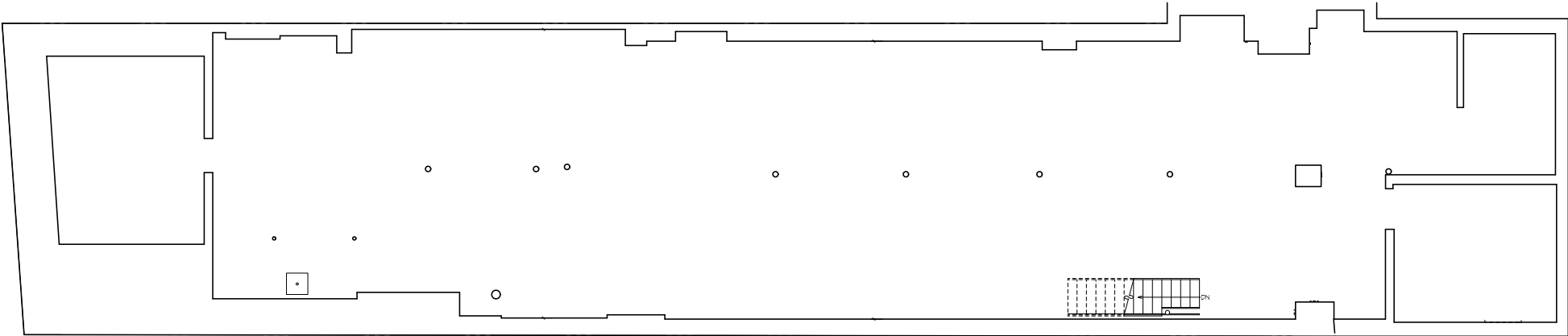


**MERIDIAN**  
RETAIL LEASING

All information supplied is from sources deemed reliable and is furnished subject to errors, omissions, modifications, removal of the listing from sale or lease, and to any listing conditions, including the rates and manner of payment of commissions for particular offerings imposed by Meridian Capital Group. This information may include estimates and projections prepared by Meridian Capital Group with respect to future events, and these future events may or may not actually occur. Such estimates and projections reflect various assumptions concerning anticipated results. While Meridian Capital Group believes these assumptions are reasonable, there can be no assurance that any of these estimates and projections will be correct. Therefore, actual results may vary materially from these estimates and projections. Any square footage dimensions set forth are approximate.



GROUND FLOOR



STORAGE BASEMENT

ENTRANCE ON BOWERY

FLOOR PLANS

**GARRETT KELLY**  
Director  
212.468.5939  
gkelly@meridiancapital.com

**NOAM AZIZ**  
Director  
212.468.5984  
naziz@meridiancapital.com

**CARSON SHAHRABANI**  
Associate  
212.468.5927  
cshahrabani@meridiancapital.com



**MERIDIAN**  
RETAIL LEASING

All information supplied is from sources deemed reliable and is furnished subject to errors, omissions, modifications, removal of the listing from sale or lease, and to any listing conditions, including the rates and manner of payment of commissions for particular offerings imposed by Meridian Capital Group. This information may include estimates and projections prepared by Meridian Capital Group with respect to future events, and these future events may or may not actually occur. Such estimates and projections reflect various assumptions concerning anticipated results. While Meridian Capital Group believes these assumptions are reasonable, there can be no assurance that any of these estimates and projections will be correct. Therefore, actual results may vary materially from these estimates and projections. Any square footage dimensions set forth are approximate.

## 261 BOWERY

NOLITA, NYC | Between Prince and East Houston Streets

RETAIL/RESTAURANT FOR LEASE

NEIGHBORS



GARRETT KELLY

Director  
212.468.5939  
gkelly@meridiancapital.com

NOAM AZIZ

Director  
212.468.5984  
naziz@meridiancapital.com

CARSON SHAHRABANI

Associate  
212.468.5927  
cshahrabani@meridiancapital.com



**MERIDIAN**  
RETAIL LEASING

All information supplied is from sources deemed reliable and is furnished subject to errors, omissions, modifications, removal of the listing from sale or lease, and to any listing conditions, including the rates and manner of payment of commissions for particular offerings imposed by Meridian Capital Group. This information may include estimates and projections prepared by Meridian Capital Group with respect to future events, and these future events may or may not actually occur. Such estimates and projections reflect various assumptions concerning anticipated results. While Meridian Capital Group believes these assumptions are reasonable, there can be no assurance that any of these estimates and projections will be correct. Therefore, actual results may vary materially from these estimates and projections. Any square footage dimensions set forth are approximate.