

221

GRAND STREET NOLITA, NYC

Corner of Grand & Elizabeth Streets

RETAIL FOR LEASE

APPROXIMATE SIZE

1,000 SF

ASKING RENT

\$14,000/Month

POSSESSION

Immediate

TERM

10+ Years

FRONTAGE

20 FT Wraparound

COMMENTS

- Prime Nolita corner with 24/7 foot traffic
- Space will be delivered in great condition
- Potential for venting
- In immaculate condition with floor-to-ceiling wraparound window frontage
- One-block from both Chinatown and Little Italy

NEIGHBORS

Fox & Jane • Moxy Hotel • Prince Tea House • La Bella Beauty • Jiang Nan • Wah Fung • I'Milky • Pep's • Caff  Palermo • Casa D'Angelo • Ferrara 130

TRANSPORTATION

B D N Q 4 5 6 J Z



JOHN ROESCH

Director
212.468.5971
jroesch@meridiancapital.com

JESSICA BLOCKER

Associate
212.468.5928
jblocker@meridiancapital.com



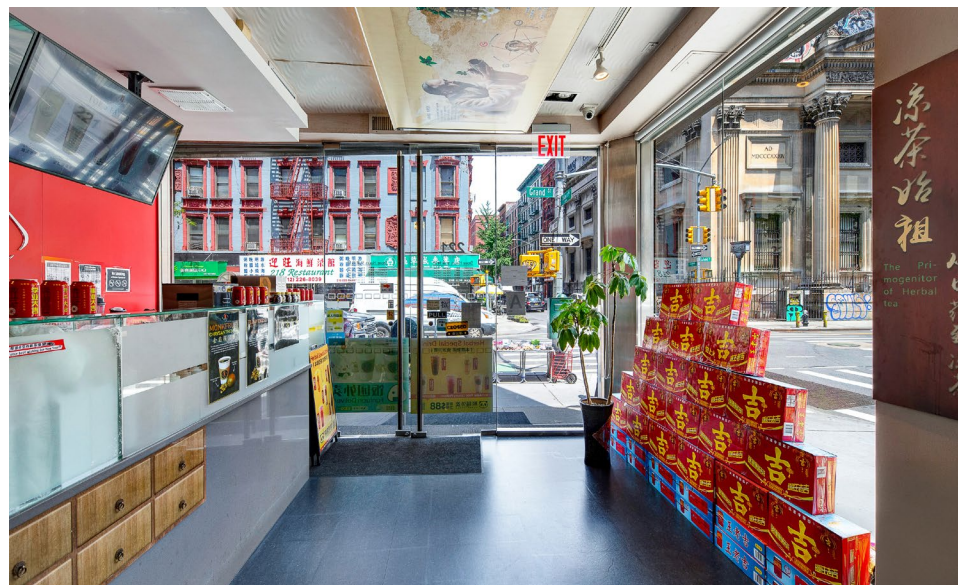
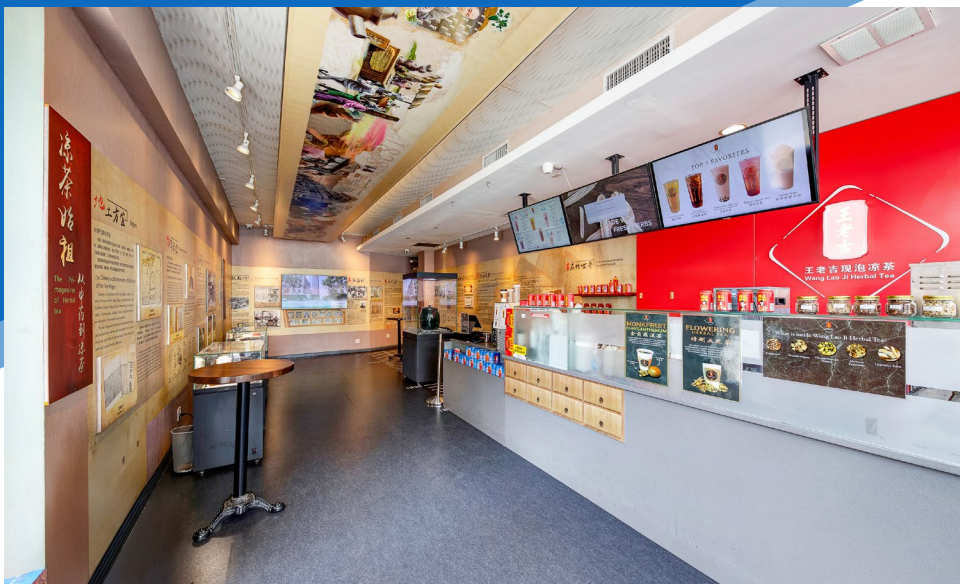
MERIDIAN
RETAIL LEASING

All information supplied is from sources deemed reliable and is furnished subject to errors, omissions, modifications, removal of the listing from sale or lease, and to any listing conditions, including the rates and manner of payment of commissions for particular offerings imposed by Meridian Capital Group. This information may include estimates and projections prepared by Meridian Capital Group with respect to future events, and these future events may or may not actually occur. Such estimates and projections reflect various assumptions concerning anticipated results. While Meridian Capital Group believes these assumptions are reasonable, there can be no assurance that any of these estimates and projections will be correct. Therefore, actual results may vary materially from these estimates and projections. Any square footage dimensions set forth are approximate.

221 GRAND STREET

NOLITA, NYC | Corner of Grand and Elizabeth Streets

RETAIL FOR LEASE



INTERIOR

JOHN ROESCH

Director
212.468.5971
jroesch@meridiancapital.com

JESSICA BLOCKER

Associate
212.468.5928
jblocker@meridiancapital.com



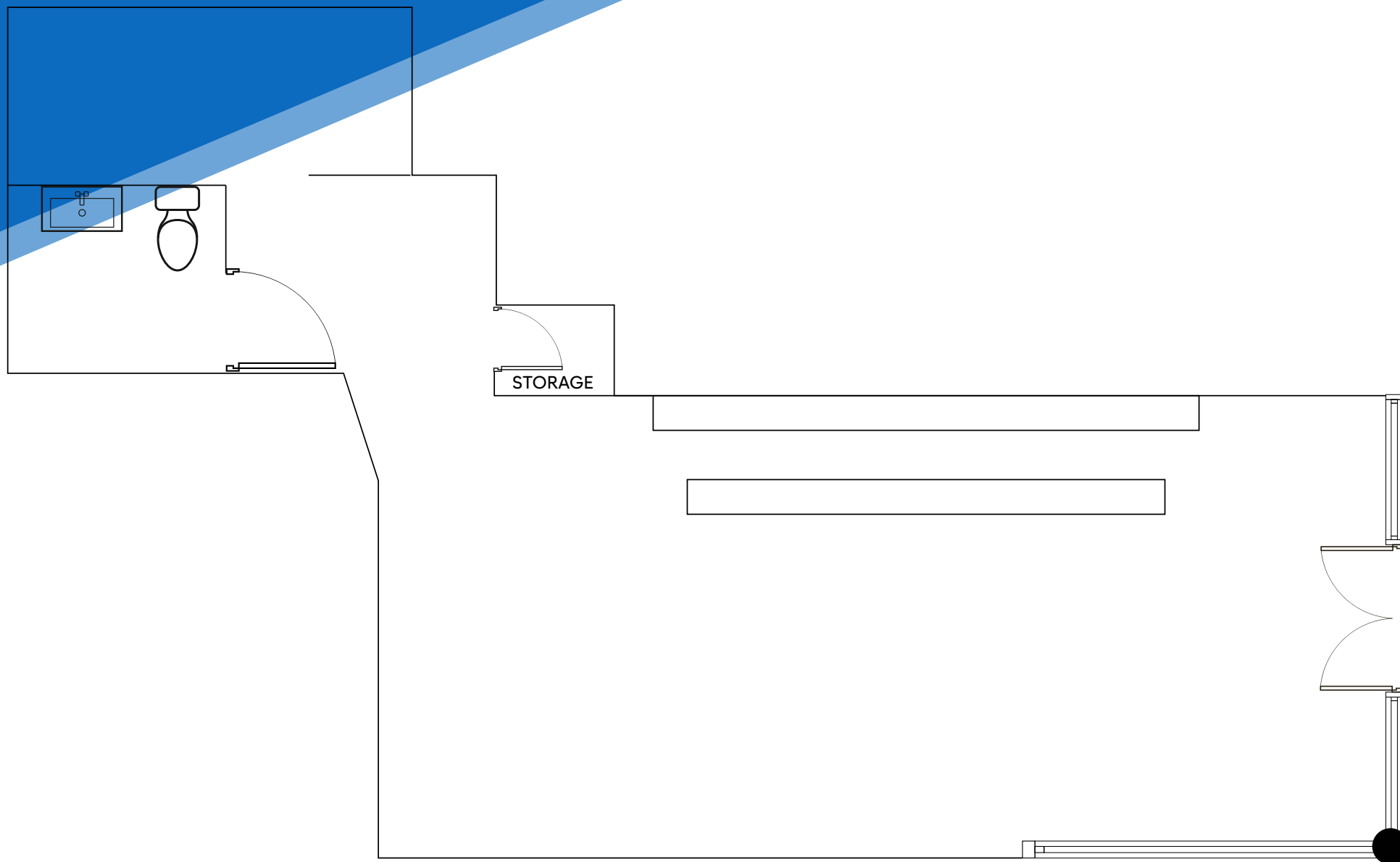
MERIDIAN
RETAIL LEASING

All information supplied is from sources deemed reliable and is furnished subject to errors, omissions, modifications, removal of the listing from sale or lease, and to any listing conditions, including the rates and manner of payment of commissions for particular offerings imposed by Meridian Capital Group. This information may include estimates and projections prepared by Meridian Capital Group with respect to future events, and these future events may or may not actually occur. Such estimates and projections reflect various assumptions concerning anticipated results. While Meridian Capital Group believes these assumptions are reasonable, there can be no assurance that any of these estimates and projections will be correct. Therefore, actual results may vary materially from these estimates and projections. Any square footage dimensions set forth are approximate.

221 GRAND STREET
NOLITA, NYC | Corner of Grand and Elizabeth Streets

RETAIL FOR LEASE

FLOOR PLAN



JOHN ROESCH

Director
212.468.5971
jroesch@meridiancapital.com

JESSICA BLOCKER

Associate
212.468.5928
jblocker@meridiancapital.com



MERIDIAN
RETAIL LEASING

All information supplied is from sources deemed reliable and is furnished subject to errors, omissions, modifications, removal of the listing from sale or lease, and to any listing conditions, including the rates and manner of payment of commissions for particular offerings imposed by Meridian Capital Group. This information may include estimates and projections prepared by Meridian Capital Group with respect to future events, and these future events may or may not actually occur. Such estimates and projections reflect various assumptions concerning anticipated results. While Meridian Capital Group believes these assumptions are reasonable, there can be no assurance that any of these estimates and projections will be correct. Therefore, actual results may vary materially from these estimates and projections. Any square footage dimensions set forth are approximate.

221 GRAND STREET

NOLITA, NYC | Corner of Grand and Elizabeth Streets

RETAIL FOR LEASE

NEIGHBORS



JOHN ROESCH

Director
212.468.5971
jroesch@meridiancapital.com

JESSICA BLOCKER

Associate
212.468.5928
jblocker@meridiancapital.com



MERIDIAN
RETAIL LEASING

All information supplied is from sources deemed reliable and is furnished subject to errors, omissions, modifications, removal of the listing from sale or lease, and to any listing conditions, including the rates and manner of payment of commissions for particular offerings imposed by Meridian Capital Group. This information may include estimates and projections prepared by Meridian Capital Group with respect to future events, and these future events may or may not actually occur. Such estimates and projections reflect various assumptions concerning anticipated results. While Meridian Capital Group believes these assumptions are reasonable, there can be no assurance that any of these estimates and projections will be correct. Therefore, actual results may vary materially from these estimates and projections. Any square footage dimensions set forth are approximate.