

217

SOUTH 3RD STREET WILLIAMSBURG, BROOKLYN

Between Roebling and Havemeyer Streets

RETAIL/OFFICE FOR LEASE

APPROXIMATE SIZE

Lower Level: 700 SF

ASKING RENT

\$2,500/Month

TERM

Negotiable

POSSESSION

Immediate

FRONTAGE

15 FT

COMMENTS

- Clean built-out space
- Private bathroom with shower in place
- Prime Williamsburg location in a high residential area
- All uses considered

NEIGHBORS

L'Industrie • Banter • Sauced • Emmy Squared
Bozu • The Four Horsemen • F45 • Blank
Street • Springbone • Fini Pizza • Mizu

TRANSPORTATION



PROPERTY INFORMATION

JAMES FAMULARO

President
646.658.7373
jfamularo@meridiancapital.com

JORDAN LANGER

Senior Associate
212.468.5977
jlanger@meridiancapital.com

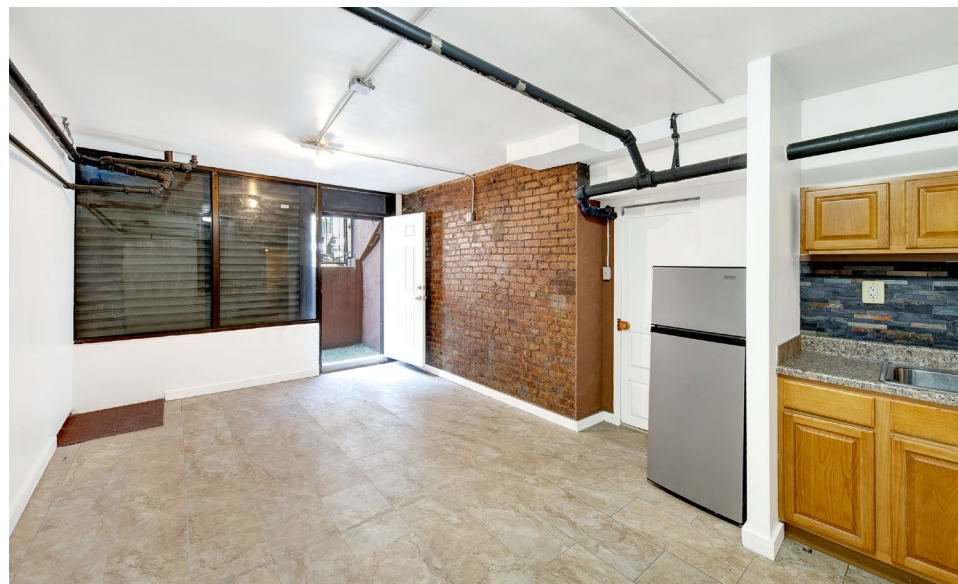


MERIDIAN
RETAIL LEASING

All information supplied is from sources deemed reliable and is furnished subject to errors, omissions, modifications, removal of the listing from sale or lease, and to any listing conditions, including the rates and manner of payment of commissions for particular offerings imposed by Meridian Capital Group. This information may include estimates and projections prepared by Meridian Capital Group with respect to future events, and these future events may or may not actually occur. Such estimates and projections reflect various assumptions concerning anticipated results. While Meridian Capital Group believes these assumptions are reasonable, there can be no assurance that any of these estimates and projections will be correct. Therefore, actual results may vary materially from these estimates and projections. Any square footage dimensions set forth are approximate.

217 SOUTH 3RD STREET
WILLIAMSBURG, BROOKLYN | Between Roebling and Havemeyer Streets

RETAIL/OFFICE FOR LEASE



INTERIOR

JAMES FAMULARO

President
646.658.7373
jfamularo@meridiancapital.com

JORDAN LANGER

Senior Associate
212.468.5977
jlanger@meridiancapital.com



MERIDIAN
RETAIL LEASING

All information supplied is from sources deemed reliable and is furnished subject to errors, omissions, modifications, removal of the listing from sale or lease, and to any listing conditions, including the rates and manner of payment of commissions for particular offerings imposed by Meridian Capital Group. This information may include estimates and projections prepared by Meridian Capital Group with respect to future events, and these future events may or may not actually occur. Such estimates and projections reflect various assumptions concerning anticipated results. While Meridian Capital Group believes these assumptions are reasonable, there can be no assurance that any of these estimates and projections will be correct. Therefore, actual results may vary materially from these estimates and projections. Any square footage dimensions set forth are approximate.

WILLIAMSBURG, BROOKLYN | Between Roebling and Havemeyer Streets

NEIGHBORS



President
646.658.7373
jfamularo@meridiancapital.com

Senior Associate
212.468.5977
jlanger@meridiancapital.com



MERIDIAN RETAIL LEASING

All information supplied is from sources deemed reliable and is furnished subject to errors, omissions, modifications, removal of the listing from sale or lease, and to any listing conditions, including the rates and manner of payment of commissions for particular offerings imposed by Meridian Capital Group. This information may include estimates and projections prepared by Meridian Capital Group with respect to future events, and these future events may or may not actually occur. Such estimates and projections reflect various assumptions concerning anticipated results. While Meridian Capital Group believes these assumptions are reasonable, there can be no assurance that any of these estimates and projections will be correct. Therefore, actual results may vary materially from these estimates and projections. Any square footage dimensions set forth are approximate.