

200

CENTRAL PARK SOUTH MIDTOWN, NYC

Between Seventh & Eighth Avenues

MEDICAL/OFFICE FOR LEASE

APPROXIMATE SIZE

Ground Floor Suite #109: 746 SF

ASKING RENT

\$9,750/Month

POSSESSION

Immediate

TERM

5 Years

FRONTAGE

20 FT on Seventh Avenue

COMMENTS

- On-grade medical office space with a private entrance
- Central Park views
- Centrally located on Central Park South
- At the base of a 309-unit ultra-luxury residential condo building

NEIGHBORS

Central Park • Columbus Circle • JW Marriot •
Bourbon Steak by Michael Mina • Park Hyatt New
York • Marea • Nathan's Famous • Redeye Grill

TRANSPORTATION



GARRETT KELLY

Director
212.468.5939
gkelly@meridiancapital.com

NOAM AZIZ

Director
212.468.5984
naziz@meridiancapital.com

MAX FREUDENBERGER

Associate
212.468.5951
mfreudenberg@meridiancapital.com

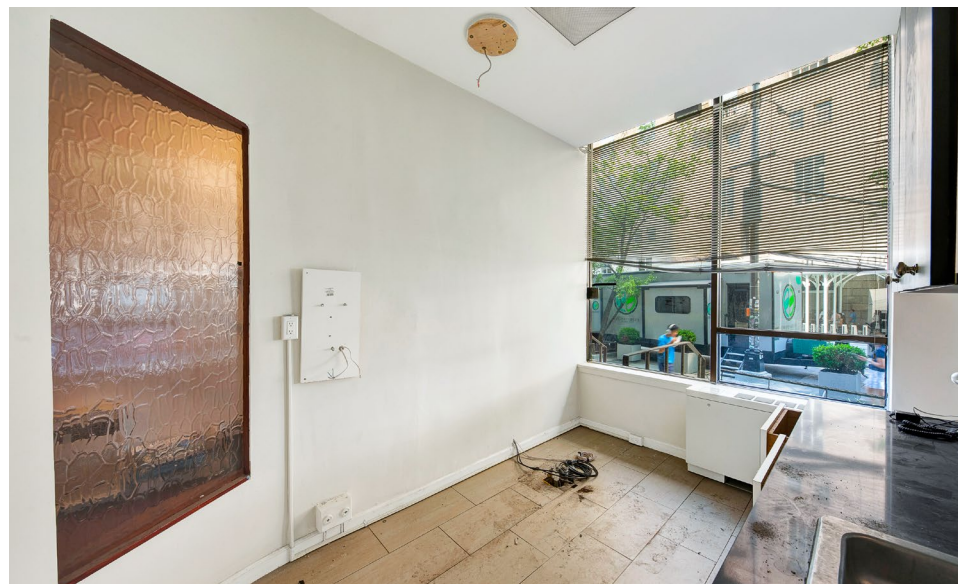
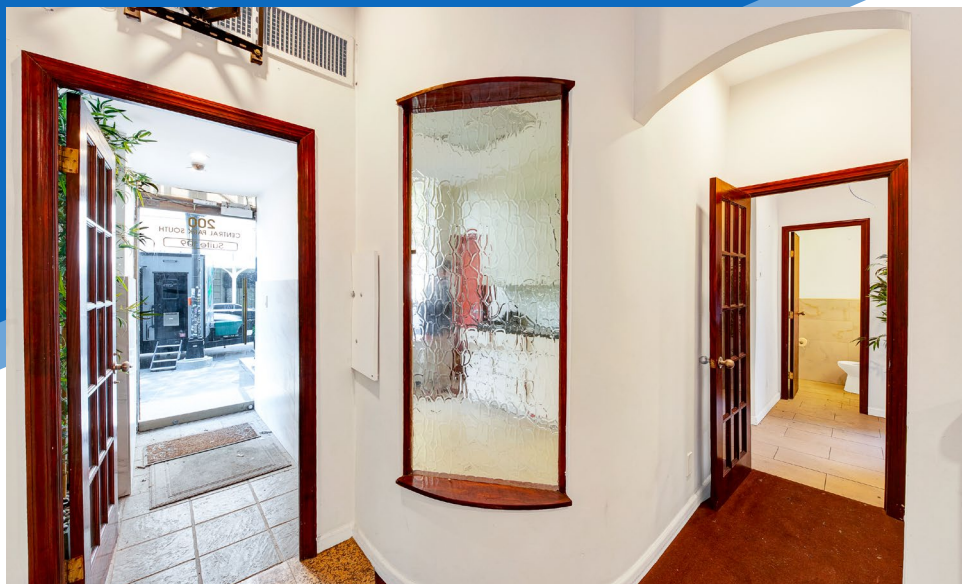


MERIDIAN
RETAIL LEASING

All information supplied is from sources deemed reliable and is furnished subject to errors, omissions, modifications, removal of the listing from sale or lease, and to any listing conditions, including the rates and manner of payment of commissions for particular offerings imposed by Meridian Capital Group. This information may include estimates and projections prepared by Meridian Capital Group with respect to future events, and these future events may or may not actually occur. Such estimates and projections reflect various assumptions concerning anticipated results. While Meridian Capital Group believes these assumptions are reasonable, there can be no assurance that any of these estimates and projections will be correct. Therefore, actual results may vary materially from these estimates and projections. Any square footage dimensions set forth are approximate.

200 CENTRAL PARK SOUTH
MIDTOWN, NYC | Between Seventh and Eighth Avenues

MEDICAL/OFFICE FOR LEASE



INTERIOR

GARRETT KELLY

Director
212.468.5939
gkelly@meridiancapital.com

NOAM AZIZ

Director
212.468.5984
naziz@meridiancapital.com

MAX FREUDENBERGER

Associate
212.468.5951
mfreudenberg@meridiancapital.com



MERIDIAN
RETAIL LEASING

All information supplied is from sources deemed reliable and is furnished subject to errors, omissions, modifications, removal of the listing from sale or lease, and to any listing conditions, including the rates and manner of payment of commissions for particular offerings imposed by Meridian Capital Group. This information may include estimates and projections prepared by Meridian Capital Group with respect to future events, and these future events may or may not actually occur. Such estimates and projections reflect various assumptions concerning anticipated results. While Meridian Capital Group believes these assumptions are reasonable, there can be no assurance that any of these estimates and projections will be correct. Therefore, actual results may vary materially from these estimates and projections. Any square footage dimensions set forth are approximate.

200 CENTRAL PARK SOUTH
MIDTOWN, NYC | Between Seventh and Eighth Avenues

MEDICAL/OFFICE FOR LEASE

FLOOR PLAN



GARRETT KELLY
Director
212.468.5939
gkelly@meridiancapital.com

NOAM AZIZ
Director
212.468.5984
naziz@meridiancapital.com

MAX FREUDENBERGER
Associate
212.468.5951
mfreudenberg@meridiancapital.com



MERIDIAN
RETAIL LEASING

All information supplied is from sources deemed reliable and is furnished subject to errors, omissions, modifications, removal of the listing from sale or lease, and to any listing conditions, including the rates and manner of payment of commissions for particular offerings imposed by Meridian Capital Group. This information may include estimates and projections prepared by Meridian Capital Group with respect to future events, and these future events may or may not actually occur. Such estimates and projections reflect various assumptions concerning anticipated results. While Meridian Capital Group believes these assumptions are reasonable, there can be no assurance that any of these estimates and projections will be correct. Therefore, actual results may vary materially from these estimates and projections. Any square footage dimensions set forth are approximate.

200 CENTRAL PARK SOUTH
MIDTOWN, NYC | Between Seventh and Eighth Avenues

MEDICAL/OFFICE FOR LEASE



GARRETT KELLY

Director
212.468.5939
gkelly@meridiancapital.com

NOAM AZIZ

Director
212.468.5984
naziz@meridiancapital.com

MAX FREUDENBERGER

Associate
212.468.5951
mfreudenberg@meridiancapital.com



MERIDIAN
RETAIL LEASING

All information supplied is from sources deemed reliable and is furnished subject to errors, omissions, modifications, removal of the listing from sale or lease, and to any listing conditions, including the rates and manner of payment of commissions for particular offerings imposed by Meridian Capital Group. This information may include estimates and projections prepared by Meridian Capital Group with respect to future events, and these future events may or may not actually occur. Such estimates and projections reflect various assumptions concerning anticipated results. While Meridian Capital Group believes these assumptions are reasonable, there can be no assurance that any of these estimates and projections will be correct. Therefore, actual results may vary materially from these estimates and projections. Any square footage dimensions set forth are approximate.