

# 139

## ELDRIDGE STREET LOWER EAST SIDE, NYC

Between Delancey & Broome Streets

RETAIL FOR LEASE

**APPROXIMATE SIZE**  
600 SF + Full Basement

**ASKING RENT**  
\$5,000/Month

**TERM**  
Negotiable

**POSSESSION**  
Immediate

**FRONTAGE**  
10 FT

### COMMENTS

- Prime LES retail space in white-box condition
- In close proximity to Nolita, Chinatown, and SoHo
- Steps from Delancey/Essex Street subway
- Surrounded by popular bars, restaurants, and galleries

### NEIGHBORS

Lena Wine Bar • Attaboy Akiko Nails •  
Essex Markets • Woodward Gallery • Cafe  
Colmado • Subway • Williamsburg Pizza  
• Starbucks • Paint n Pout • Grey Lady •  
Peete's Pie Company • The Green Room

### TRANSPORTATION



### NOAM AZIZ

Director  
212.468.5984  
naziz@meridiancapital.com

### DANIEL ZACAİM

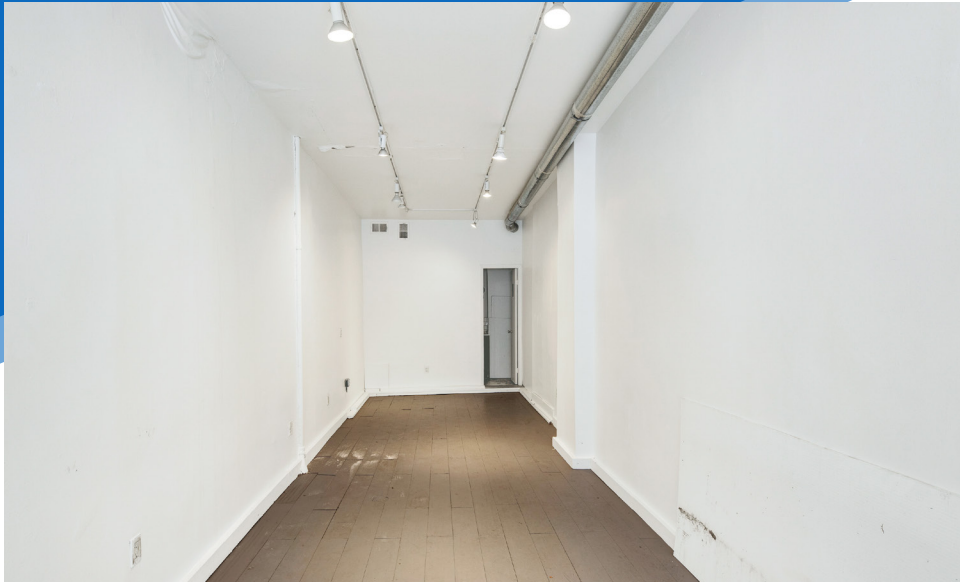
Associate  
212.468.5910  
dzacaim@meridiancapital.com



**MERIDIAN**  
RETAIL LEASING

All information supplied is from sources deemed reliable and is furnished subject to errors, omissions, modifications, removal of the listing from sale or lease, and to any listing conditions, including the rates and manner of payment of commissions for particular offerings imposed by Meridian Capital Group. This information may include estimates and projections prepared by Meridian Capital Group with respect to future events, and these future events may or may not actually occur. Such estimates and projections reflect various assumptions concerning anticipated results. While Meridian Capital Group believes these assumptions are reasonable, there can be no assurance that any of these estimates and projections will be correct. Therefore, actual results may vary materially from these estimates and projections. Any square footage dimensions set forth are approximate.





INTERIOR

NOAM AZIZ

Director  
212.468.5984  
naziz@meridiancapital.com

DANIEL ZACAIM

Associate  
212.468.5910  
dzacaim@meridiancapital.com



**MERIDIAN**  
RETAIL LEASING

# 139 ELDRIDGE STREET

LOWER EAST SIDE, NYC | Between Delancey and Broome Streets

RETAIL FOR LEASE

NEIGHBORS



NOAM AZIZ

Director  
212.468.5984  
naziz@meridiancapital.com

DANIEL ZACAİM

Associate  
212.468.5910  
dzacaim@meridiancapital.com



MERIDIAN  
RETAIL LEASING

All information supplied is from sources deemed reliable and is furnished subject to errors, omissions, modifications, removal of the listing from sale or lease, and to any listing conditions, including the rates and manner of payment of commissions for particular offerings imposed by Meridian Capital Group. This information may include estimates and projections prepared by Meridian Capital Group with respect to future events, and these future events may or may not actually occur. Such estimates and projections reflect various assumptions concerning anticipated results. While Meridian Capital Group believes these assumptions are reasonable, there can be no assurance that any of these estimates and projections will be correct. Therefore, actual results may vary materially from these estimates and projections. Any square footage dimensions set forth are approximate.