

121

EAST 27TH STREET NOMAD, NYC

Between Lexington & Park Avenue South

BAR/SPEAKEASY FOR LEASE

APPROXIMATE SIZE

Ground Floor: 1,223 SF
Basement: 685 SF

CEILING HEIGHT

16 FT

ASKING RENT

\$14,925/Month
Key-Money Upon Request

POSSESSION

Immediate

TERM

Through May 31st, 2034
+ 5-Year Option

COMMENTS

- Currently operating as "J. Bespoke"
- Unique turn-key cocktail bar/speakeasy opportunity
- Full liquor license in place

NEIGHBORS

Hillstone • Sarabeth's Park Avenue • Turnmill Bar
• Barry's • Baruch College • 787 Coffee • John Devoy's • Hotel Giraffe • Borgo • Whole Foods
• Bhatti • Rocco Steakhouse • Starbucks • Park South Hotel • *Coming Soon - Music Venue*

TRANSPORTATION

6 R W

M101 M102 M103

GARRETT KELLY

Director
212.468.5939
gkelly@meridiancapital.com

MAX FREUDENBERGER

Associate
212.468.5951
mfreudenberg@meridiancapital.com

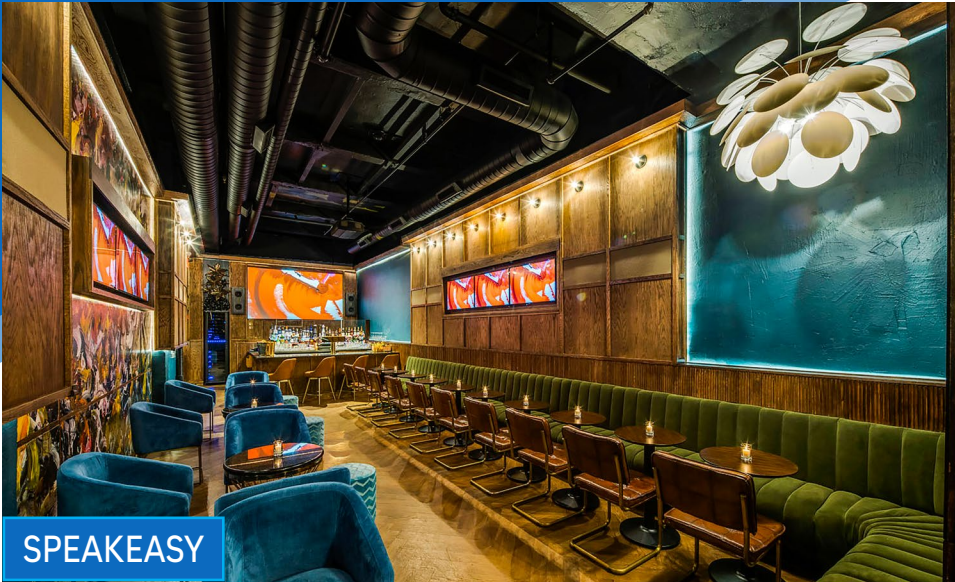


MERIDIAN
RETAIL LEASING

All information supplied is from sources deemed reliable and is furnished subject to errors, omissions, modifications, removal of the listing from sale or lease, and to any listing conditions, including the rates and manner of payment of commissions for particular offerings imposed by Meridian Capital Group. This information may include estimates and projections prepared by Meridian Capital Group with respect to future events, and these future events may or may not actually occur. Such estimates and projections reflect various assumptions concerning anticipated results. While Meridian Capital Group believes these assumptions are reasonable, there can be no assurance that any of these estimates and projections will be correct. Therefore, actual results may vary materially from these estimates and projections. Any square footage dimensions set forth are approximate.

121 EAST 27TH STREET
NOMAD, NYC | Between Lexington and Park Avenue South

BAR/SPEAKEASY FOR LEASE



SPEAKEASY



SPEAKEASY ENTRANCE



FRONT OF HOUSE

INTERIOR

GARRETT KELLY
Director
212.468.5939
gkelly@meridiancapital.com

MAX FREUDENBERGER
Associate
212.468.5951
mfreudenberg@meridiancapital.com

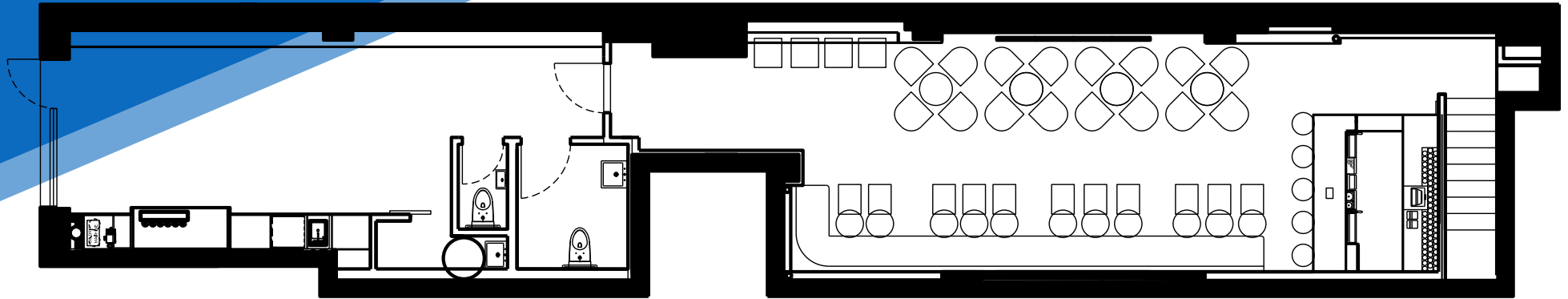


MERIDIAN
RETAIL LEASING

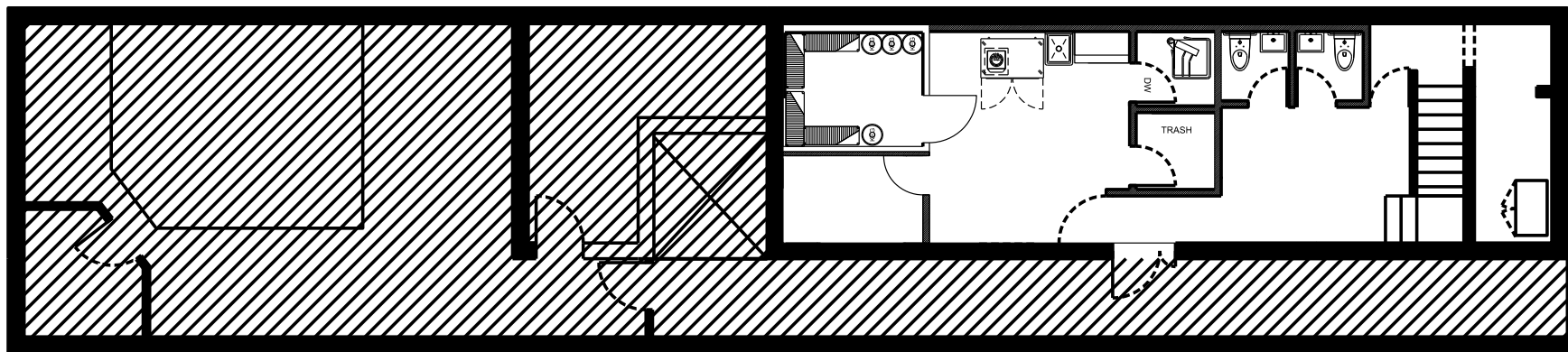
All information supplied is from sources deemed reliable and is furnished subject to errors, omissions, modifications, removal of the listing from sale or lease, and to any listing conditions, including the rates and manner of payment of commissions for particular offerings imposed by Meridian Capital Group. This information may include estimates and projections prepared by Meridian Capital Group with respect to future events, and these future events may or may not actually occur. Such estimates and projections reflect various assumptions concerning anticipated results. While Meridian Capital Group believes these assumptions are reasonable, there can be no assurance that any of these estimates and projections will be correct. Therefore, actual results may vary materially from these estimates and projections. Any square footage dimensions set forth are approximate.

121 EAST 27TH STREET
NOMAD, NYC | Between Lexington and Park Avenue South

BAR/SPEAKEASY FOR LEASE



GROUND FLOOR



LOWER LEVEL

FLOOR PLANS

GARRETT KELLY

Director
212.468.5939
gkelly@meridiancapital.com

MAX FREUDENBERGER

Associate
212.468.5951
mfreudenberg@meridiancapital.com



MERIDIAN
RETAIL LEASING

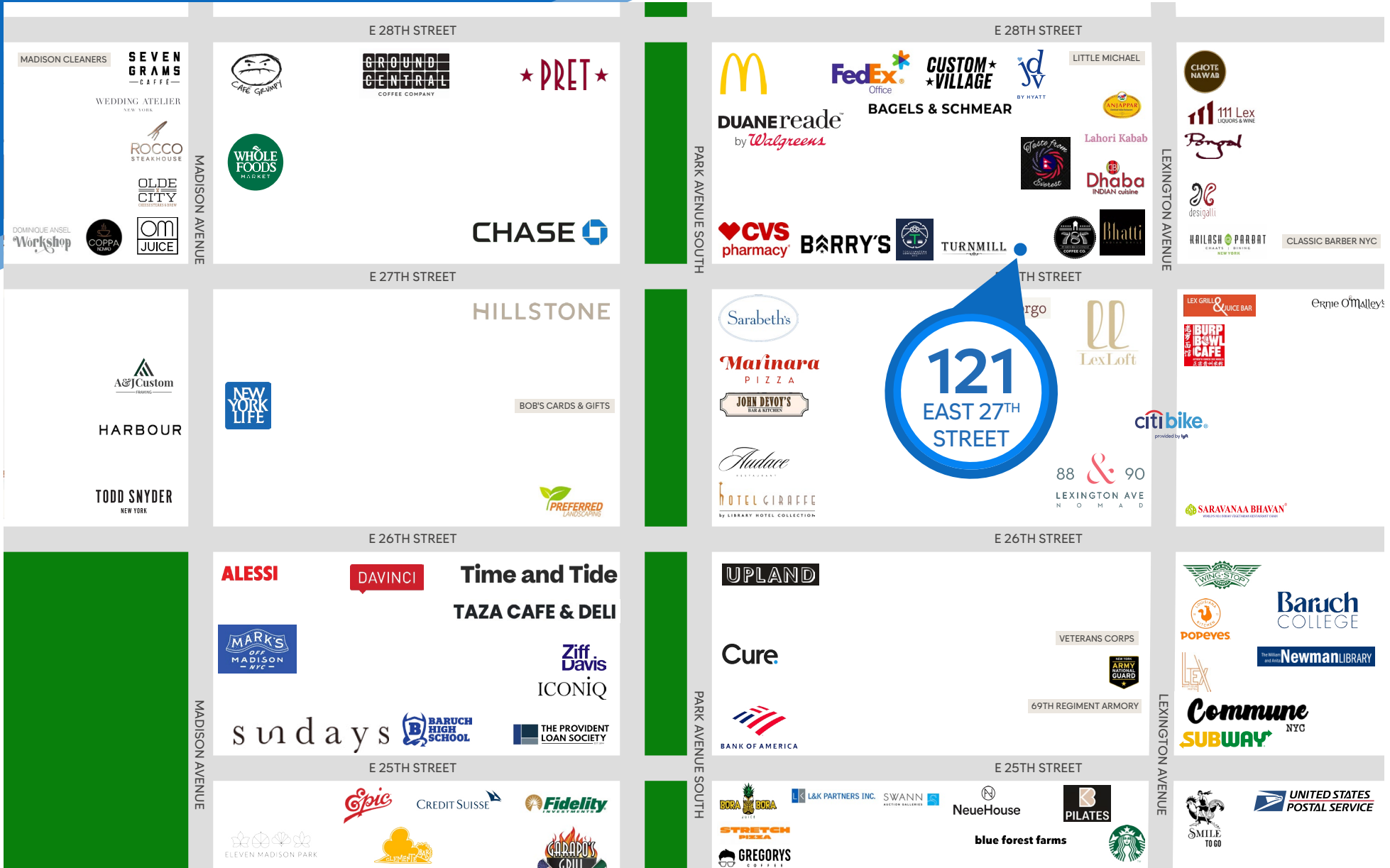
All information supplied is from sources deemed reliable and is furnished subject to errors, omissions, modifications, removal of the listing from sale or lease, and to any listing conditions, including the rates and manner of payment of commissions for particular offerings imposed by Meridian Capital Group. This information may include estimates and projections prepared by Meridian Capital Group with respect to future events, and these future events may or may not actually occur. Such estimates and projections reflect various assumptions concerning anticipated results. While Meridian Capital Group believes these assumptions are reasonable, there can be no assurance that any of these estimates and projections will be correct. Therefore, actual results may vary materially from these estimates and projections. Any square footage dimensions set forth are approximate.

121 EAST 27TH STREET

NOMAD, NYC | Between Lexington and Park Avenue South

BAR/SPEAKEASY FOR LEASE

NEIGHBORS



GARRETT KELLY
Director
212.468.5939
gkelly@meridiancapital.com

MAX FREUDENBERGER
Associate
212.468.5951
mfreudenberg@meridiancapital.com



MERIDIAN
RETAIL LEASING

All information supplied is from sources deemed reliable and is furnished subject to errors, omissions, modifications, removal of the listing from sale or lease, and to any listing conditions, including the rates and manner of payment of commissions for particular offerings imposed by Meridian Capital Group. This information may include estimates and projections prepared by Meridian Capital Group with respect to future events, and these future events may or may not actually occur. Such estimates and projections reflect various assumptions concerning anticipated results. While Meridian Capital Group believes these assumptions are reasonable, there can be no assurance that any of these estimates and projections will be correct. Therefore, actual results may vary materially from these estimates and projections. Any square footage dimensions set forth are approximate.