

# 115

## EAST 57<sup>TH</sup> STREET MIDTOWN EAST, NYC

Between Lexington & Park Avenues

RETAIL FOR LEASE

### APPROXIMATE SIZE

Space A (Beauty Parlor): 3,650 SF (Split)  
Space B (Coffee Bar): 313 SF  
Space C (Nail Salon): 1,859 SF (Split)  
Space D (Art Gallery): 1,815 SF  
Space E (Restaurant): 2,205 SF (Split)

### ASKING RENT

Space A: \$12,000/Month  
Space B: \$2,000/Month  
Space C: \$7,000/Month  
Space D: \$5,000/Month  
Space E: \$10,000/Month

### TERM

10-15 Years

### POSSESSION

Immediate

### COMMENTS

- Collection of boutique retail storefronts in a premier Midtown location
- Previous uses were a variety of lifestyle and community-oriented retail
- Surrounded by luxury hotels, flagship stores, and world-class dining
- Unique opportunity to curate a mix of different uses under one roof

### NEIGHBORS

Saks Off Fifth • Rocco Steakhouse • Bloomingdale's Reserve Cut • Aston Martin • Joe & The Juice • Chopt • Il Mulino • Tao • Serafina • Wolford • Chanel • Dior • Piccola Cucina • Amali • Oliver Peoples

### TRANSPORTATION

N Q R W 4 5 6 E F M

### JAMES FAMULARO

President  
646.658.7373  
jfamularo@meridiancapital.com

### JACOB MAYER

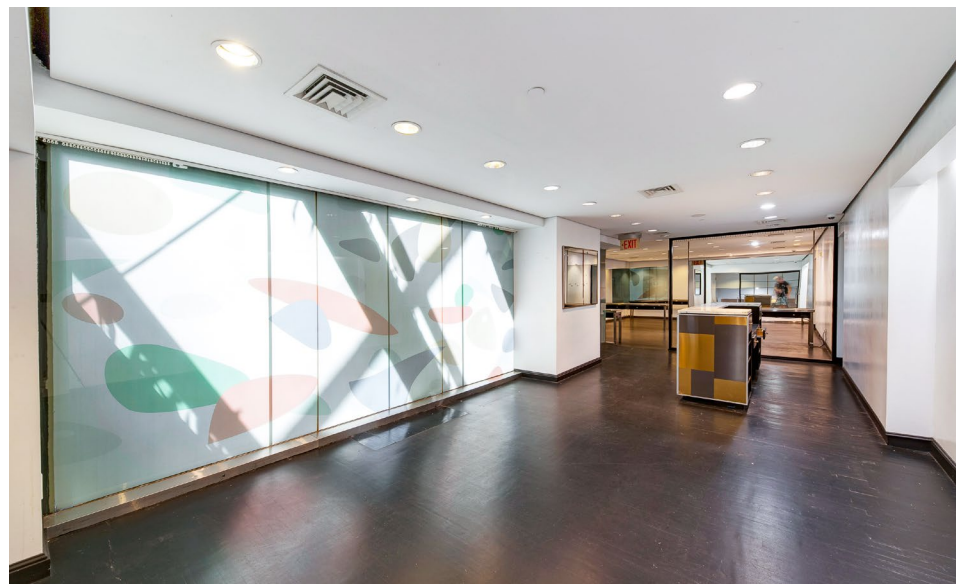
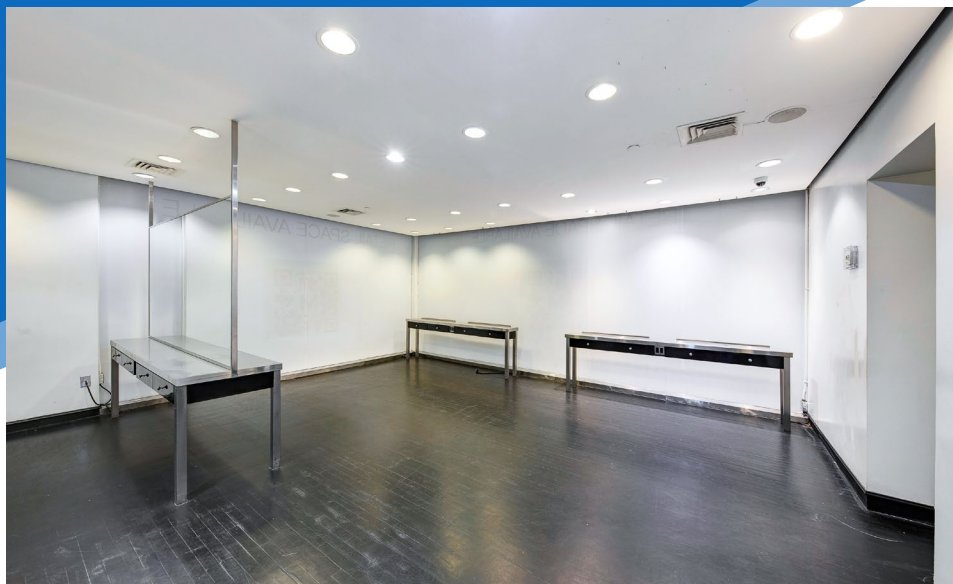
Director  
212.468.5926  
jmayer@meridiancapital.com



**MERIDIAN**  
RETAIL LEASING

All information supplied is from sources deemed reliable and is furnished subject to errors, omissions, modifications, removal of the listing from sale or lease, and to any listing conditions, including the rates and manner of payment of commissions for particular offerings imposed by Meridian Capital Group. This information may include estimates and projections prepared by Meridian Capital Group with respect to future events, and these future events may or may not actually occur. Such estimates and projections reflect various assumptions concerning anticipated results. While Meridian Capital Group believes these assumptions are reasonable, there can be no assurance that any of these estimates and projections will be correct. Therefore, actual results may vary materially from these estimates and projections. Any square footage dimensions set forth are approximate.







115 EAST 57<sup>TH</sup> STREET  
MIDTOWN EAST, NYC | Between Lexington and Park Avenues

RETAIL FOR LEASE



INTERIOR | SPACE B

JAMES FAMULARO

President  
646.658.7373  
jfamularo@meridiancapital.com

JACOB MAYER

Director  
212.468.5926  
jmayer@meridiancapital.com



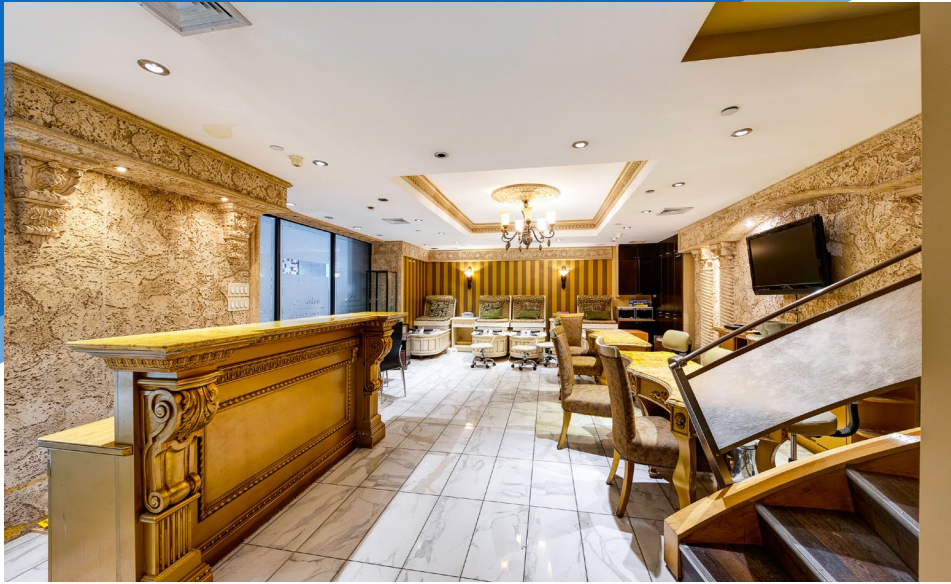
**MERIDIAN**  
RETAIL LEASING

All information supplied is from sources deemed reliable and is furnished subject to errors, omissions, modifications, removal of the listing from sale or lease, and to any listing conditions, including the rates and manner of payment of commissions for particular offerings imposed by Meridian Capital Group. This information may include estimates and projections prepared by Meridian Capital Group with respect to future events, and these future events may or may not actually occur. Such estimates and projections reflect various assumptions concerning anticipated results. While Meridian Capital Group believes these assumptions are reasonable, there can be no assurance that any of these estimates and projections will be correct. Therefore, actual results may vary materially from these estimates and projections. Any square footage dimensions set forth are approximate.



115 EAST 57<sup>TH</sup> STREET  
MIDTOWN EAST, NYC | Between Lexington and Park Avenues

RETAIL FOR LEASE



INTERIOR | SPACE C

JAMES FAMULARO

President  
646.658.7373  
jfamularo@meridiancapital.com

JACOB MAYER

Director  
212.468.5926  
jmayer@meridiancapital.com



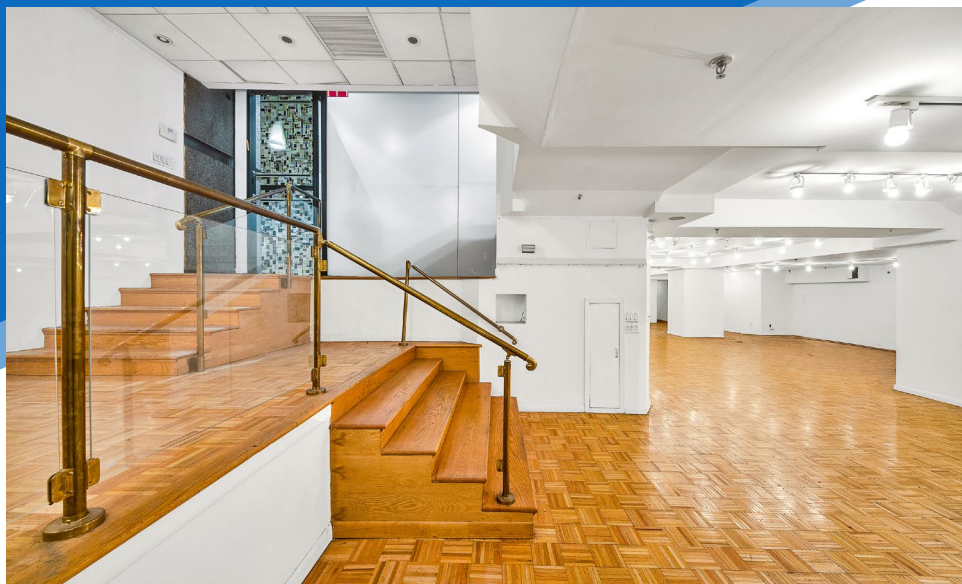
**MERIDIAN**  
RETAIL LEASING

All information supplied is from sources deemed reliable and is furnished subject to errors, omissions, modifications, removal of the listing from sale or lease, and to any listing conditions, including the rates and manner of payment of commissions for particular offerings imposed by Meridian Capital Group. This information may include estimates and projections prepared by Meridian Capital Group with respect to future events, and these future events may or may not actually occur. Such estimates and projections reflect various assumptions concerning anticipated results. While Meridian Capital Group believes these assumptions are reasonable, there can be no assurance that any of these estimates and projections will be correct. Therefore, actual results may vary materially from these estimates and projections. Any square footage dimensions set forth are approximate.



115 EAST 57<sup>TH</sup> STREET  
MIDTOWN EAST, NYC | Between Lexington and Park Avenues

RETAIL FOR LEASE



INTERIOR | SPACE D

JAMES FAMULARO

President  
646.658.7373  
jfamularo@meridiancapital.com

JACOB MAYER

Director  
212.468.5926  
jmayer@meridiancapital.com



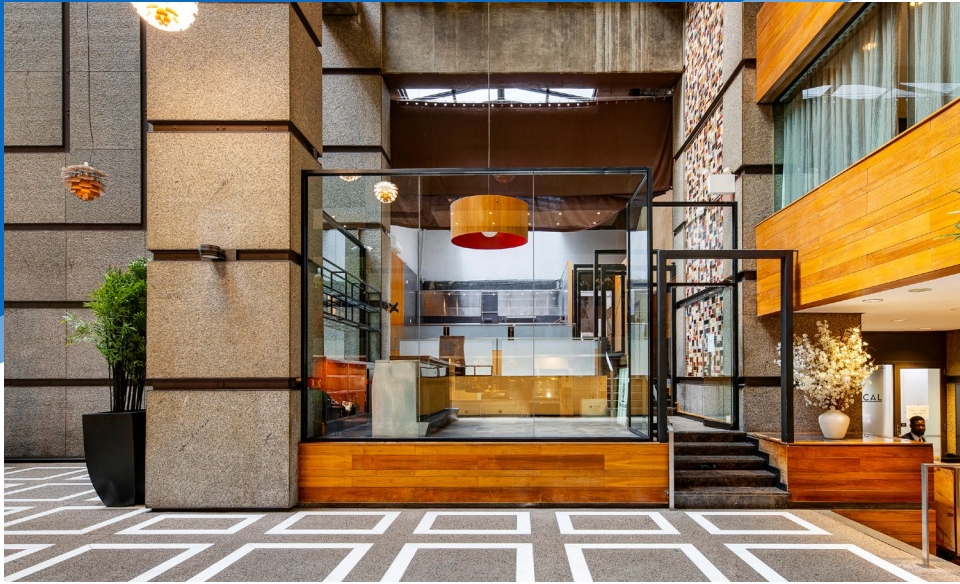
**MERIDIAN**  
RETAIL LEASING

All information supplied is from sources deemed reliable and is furnished subject to errors, omissions, modifications, removal of the listing from sale or lease, and to any listing conditions, including the rates and manner of payment of commissions for particular offerings imposed by Meridian Capital Group. This information may include estimates and projections prepared by Meridian Capital Group with respect to future events, and these future events may or may not actually occur. Such estimates and projections reflect various assumptions concerning anticipated results. While Meridian Capital Group believes these assumptions are reasonable, there can be no assurance that any of these estimates and projections will be correct. Therefore, actual results may vary materially from these estimates and projections. Any square footage dimensions set forth are approximate.



115 EAST 57<sup>TH</sup> STREET  
MIDTOWN EAST, NYC | Between Lexington and Park Avenues

RETAIL FOR LEASE



INTERIOR | SPACE E

JAMES FAMULARO

President  
646.658.7373  
jfamularo@meridiancapital.com

JACOB MAYER

Director  
212.468.5926  
jmayer@meridiancapital.com



**MERIDIAN**  
RETAIL LEASING

All information supplied is from sources deemed reliable and is furnished subject to errors, omissions, modifications, removal of the listing from sale or lease, and to any listing conditions, including the rates and manner of payment of commissions for particular offerings imposed by Meridian Capital Group. This information may include estimates and projections prepared by Meridian Capital Group with respect to future events, and these future events may or may not actually occur. Such estimates and projections reflect various assumptions concerning anticipated results. While Meridian Capital Group believes these assumptions are reasonable, there can be no assurance that any of these estimates and projections will be correct. Therefore, actual results may vary materially from these estimates and projections. Any square footage dimensions set forth are approximate.

115 EAST 57<sup>TH</sup> STREET  
MIDTOWN EAST, NYC | Between Lexington and Park Avenues

RETAIL FOR LEASE

FLOOR PLAN



JAMES FAMULARO  
President  
646.658.7373  
jfamularo@meridiancapital.com

JACOB MAYER  
Director  
212.468.5926  
jmayer@meridiancapital.com



MERIDIAN  
RETAIL LEASING

All information supplied is from sources deemed reliable and is furnished subject to errors, omissions, modifications, removal of the listing from sale or lease, and to any listing conditions, including the rates and manner of payment of commissions for particular offerings imposed by Meridian Capital Group. This information may include estimates and projections prepared by Meridian Capital Group with respect to future events, and these future events may or may not actually occur. Such estimates and projections reflect various assumptions concerning anticipated results. While Meridian Capital Group believes these assumptions are reasonable, there can be no assurance that any of these estimates and projections will be correct. Therefore, actual results may vary materially from these estimates and projections. Any square footage dimensions set forth are approximate.



115 EAST 57<sup>TH</sup> STREET  
MIDTOWN EAST, NYC | Between Lexington and Park Avenues

RETAIL FOR LEASE



NEIGHBORS

JAMES FAMULARO

President  
646.658.7373  
jfamularo@meridiancapital.com

JACOB MAYER

Director  
212.468.5926  
jmayer@meridiancapital.com



**MERIDIAN**  
RETAIL LEASING

All information supplied is from sources deemed reliable and is furnished subject to errors, omissions, modifications, removal of the listing from sale or lease, and to any listing conditions, including the rates and manner of payment of commissions for particular offerings imposed by Meridian Capital Group. This information may include estimates and projections prepared by Meridian Capital Group with respect to future events, and these future events may or may not actually occur. Such estimates and projections reflect various assumptions concerning anticipated results. While Meridian Capital Group believes these assumptions are reasonable, there can be no assurance that any of these estimates and projections will be correct. Therefore, actual results may vary materially from these estimates and projections. Any square footage dimensions set forth are approximate.