

495

BROADWAY SOHO, NYC

Between Broome & Spring Streets

RETAIL/OFFICE FOR LEASE

APPROXIMATE SIZE

Lower Level: 4,000 SF

ASKING RENT

\$13,000/Month

POSSESSION

Immediate

TERM

Negotiable

COMMENTS

- Second generation lower level space
- Fully built-out with 13 rooms, bathrooms, locker room for employees, and reception area
- 9 ft vaulted ceilings
- In the heart of SoHo's prime fashion district
- Accessible from the main lobby with 2 elevators and a stairwell
- Prominent lobby branding opportunity for increased visibility

NEIGHBORS

Dolce Vita • Levi's • Mini So • Steve Madden •
MAC • Pacsun • ZARA • Bloomingdale's • Dry Bar
• Polène • Zadig & Voltaire • Rails • James Perse

TRANSPORTATION

C E 6 N R W B D F M

NOAM AZIZ

Director
212.468.5984
naziz@meridiancapital.com

CARSON SHAHRABANI

Associate
212.468.5927
cshahrabani@meridiancapital.com

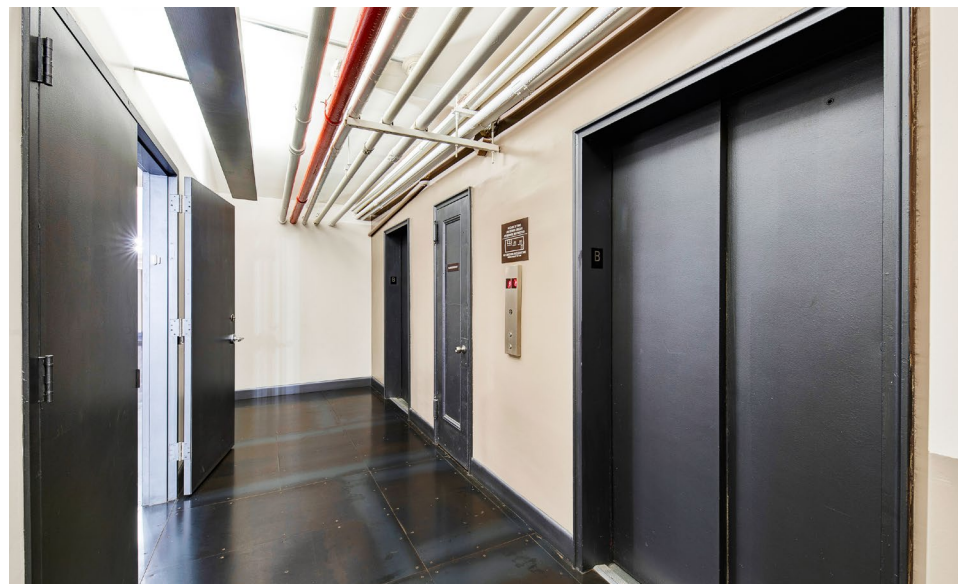
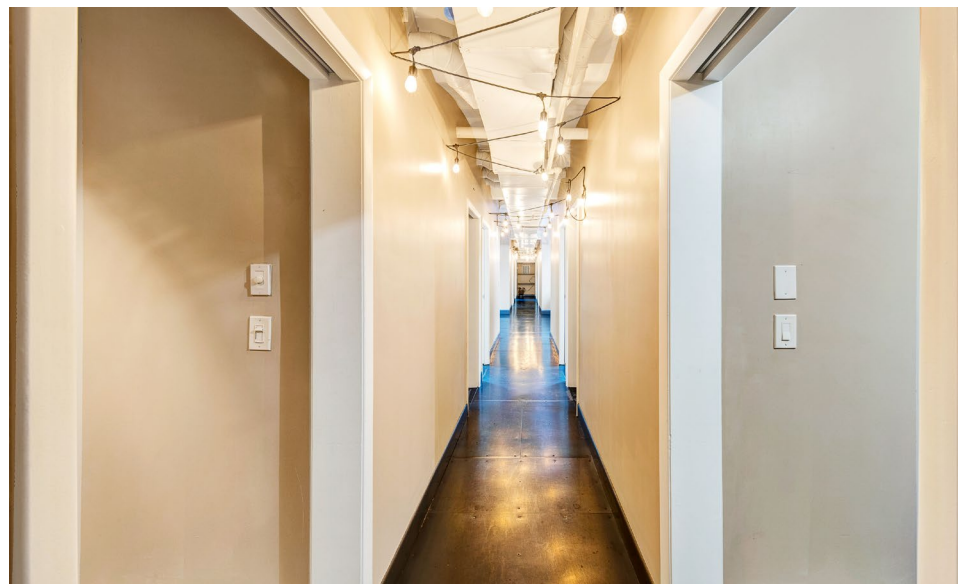
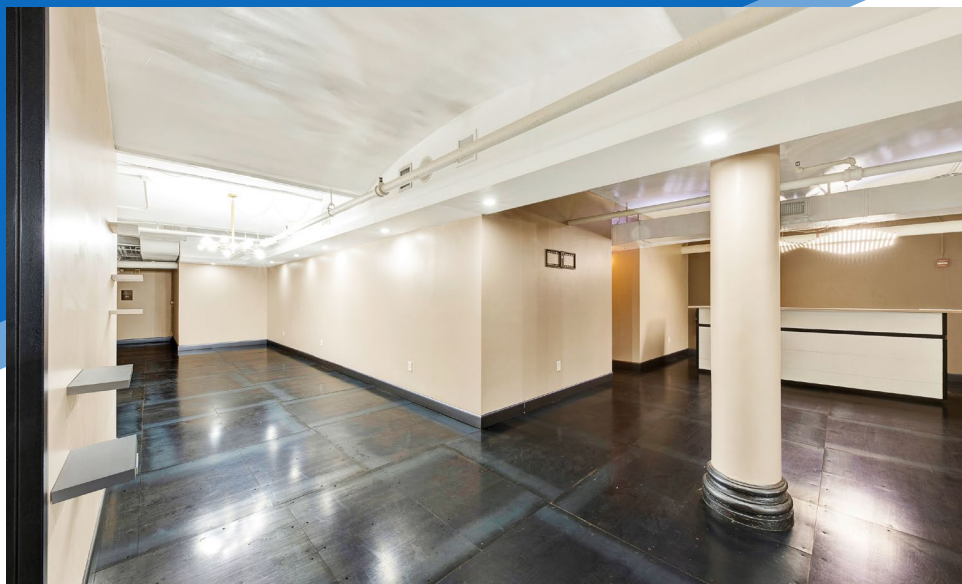


MERIDIAN
RETAIL LEASING

All information supplied is from sources deemed reliable and is furnished subject to errors, omissions, modifications, removal of the listing from sale or lease, and to any listing conditions, including the rates and manner of payment of commissions for particular offerings imposed by Meridian Capital Group. This information may include estimates and projections prepared by Meridian Capital Group with respect to future events, and these future events may or may not actually occur. Such estimates and projections reflect various assumptions concerning anticipated results. While Meridian Capital Group believes these assumptions are reasonable, there can be no assurance that any of these estimates and projections will be correct. Therefore, actual results may vary materially from these estimates and projections. Any square footage dimensions set forth are approximate.

495 BROADWAY
SOHO, NYC | Between Broome and Spring Streets

RETAIL/OFFICE FOR LEASE



INTERIOR

NOAM AZIZ

Director
212.468.5984
naziz@meridiancapital.com

CARSON SHAHRABANI

Associate
212.468.5927
cshahrabani@meridiancapital.com



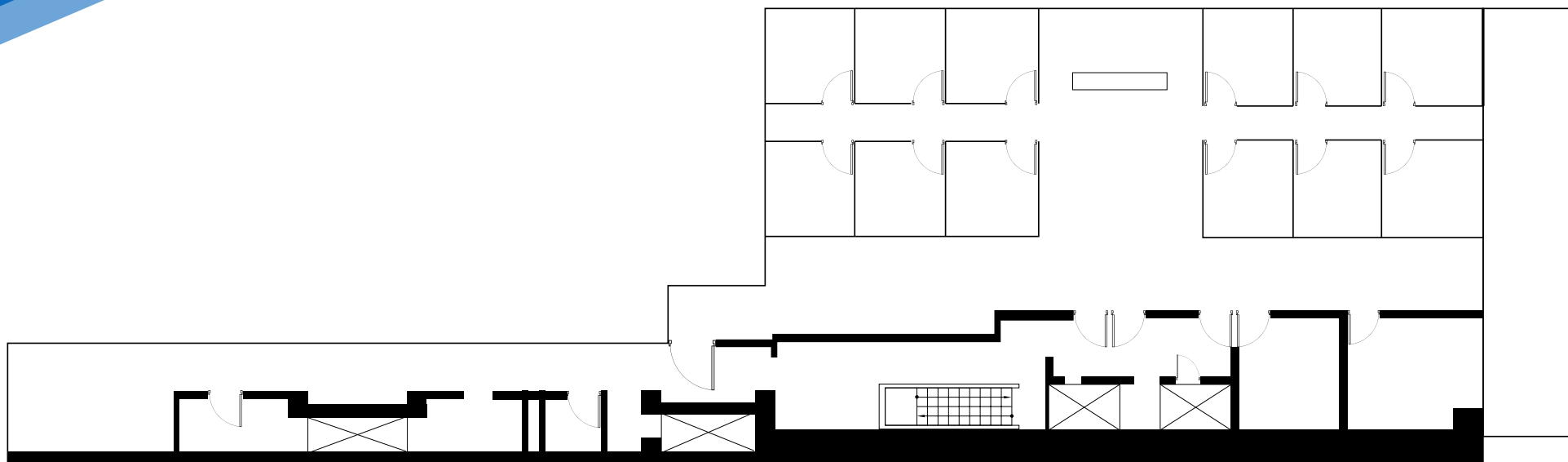
MERIDIAN
RETAIL LEASING

All information supplied is from sources deemed reliable and is furnished subject to errors, omissions, modifications, removal of the listing from sale or lease, and to any listing conditions, including the rates and manner of payment of commissions for particular offerings imposed by Meridian Capital Group. This information may include estimates and projections prepared by Meridian Capital Group with respect to future events, and these future events may or may not actually occur. Such estimates and projections reflect various assumptions concerning anticipated results. While Meridian Capital Group believes these assumptions are reasonable, there can be no assurance that any of these estimates and projections will be correct. Therefore, actual results may vary materially from these estimates and projections. Any square footage dimensions set forth are approximate.

495 BROADWAY
SOHO, NYC | Between Broome and Spring Streets

RETAIL/OFFICE FOR LEASE

FLOOR PLAN



NOAM AZIZ

Director
212.468.5984
naziz@meridiancapital.com

CARSON SHAHRABANI

Associate
212.468.5927
cshahrabani@meridiancapital.com

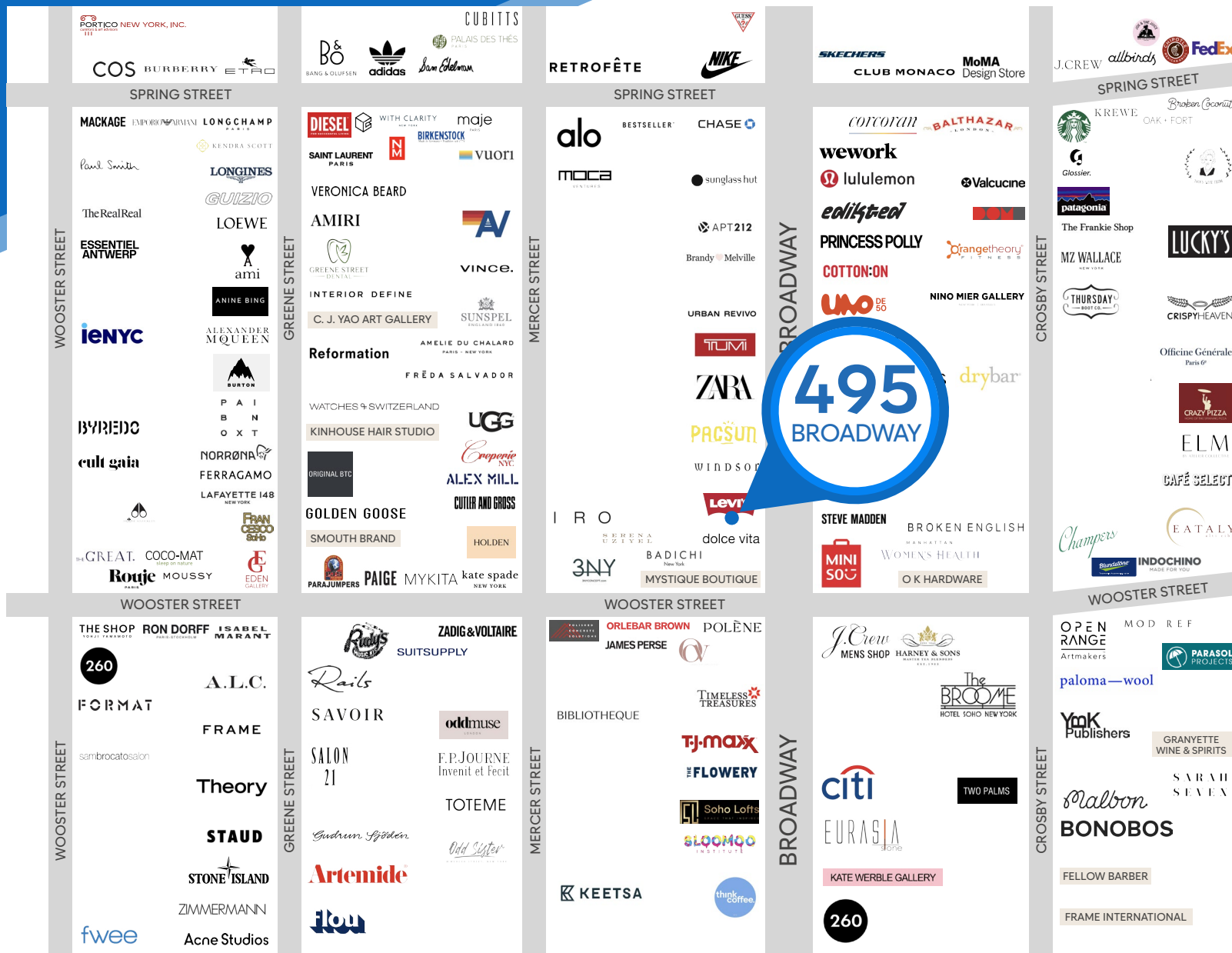


MERIDIAN
RETAIL LEASING

All information supplied is from sources deemed reliable and is furnished subject to errors, omissions, modifications, removal of the listing from sale or lease, and to any listing conditions, including the rates and manner of payment of commissions for particular offerings imposed by Meridian Capital Group. This information may include estimates and projections prepared by Meridian Capital Group with respect to future events, and these future events may or may not actually occur. Such estimates and projections reflect various assumptions concerning anticipated results. While Meridian Capital Group believes these assumptions are reasonable, there can be no assurance that any of these estimates and projections will be correct. Therefore, actual results may vary materially from these estimates and projections. Any square footage dimensions set forth are approximate.

495 BROADWAY
SOHO, NYC | Between Broome and Spring Streets

RETAIL/OFFICE FOR LEASE



NEIGHBORS

NOAM AZIZ

Director
212.468.5984
naziz@meridiancapital.com

CARSON SHAHRABANI

Associate
212.468.5927
cshahrabani@meridiancapital.com



MERIDIAN
RETAIL LEASING

All information supplied is from sources deemed reliable and is furnished subject to errors, omissions, modifications, removal of the listing from sale or lease, and to any listing conditions, including the rates and manner of payment of commissions for particular offerings imposed by Meridian Capital Group. This information may include estimates and projections prepared by Meridian Capital Group with respect to future events, and these future events may or may not actually occur. Such estimates and projections reflect various assumptions concerning anticipated results. While Meridian Capital Group believes these assumptions are reasonable, there can be no assurance that any of these estimates and projections will be correct. Therefore, actual results may vary materially from these estimates and projections. Any square footage dimensions set forth are approximate.