

346

WESTBURY AVENUE CARLE PLACE, LONG ISLAND

Between Silverlake Boulevard &
Rushmore Avenue

OFFICE FOR LEASE

APPROXIMATE SIZE

Ground Floor: 1,200 SF

ASKING RENT

\$3,950/Month

POSSESSION

July 1st, 2025

TERM

Negotiable

FRONTAGE

30 FT

COMMENTS

- Ground floor office space
- Shared on-site parking with 100-spots in rear
- Ideal for medical practice or other professional uses
- In close proximity to national retailers, Hofstra University, and neighboring medical practices
- No stairs or ramp

NEIGHBORS

375 Dance Studio • Daniel Gale Sotheby's •
Gramman Plumbing • Carle Place Haircutters
• Mauro's • Domino's Pizza • Top Nail Spa •
Julian's Barber Shop • Child Life Pediatrics

TRANSPORTATION



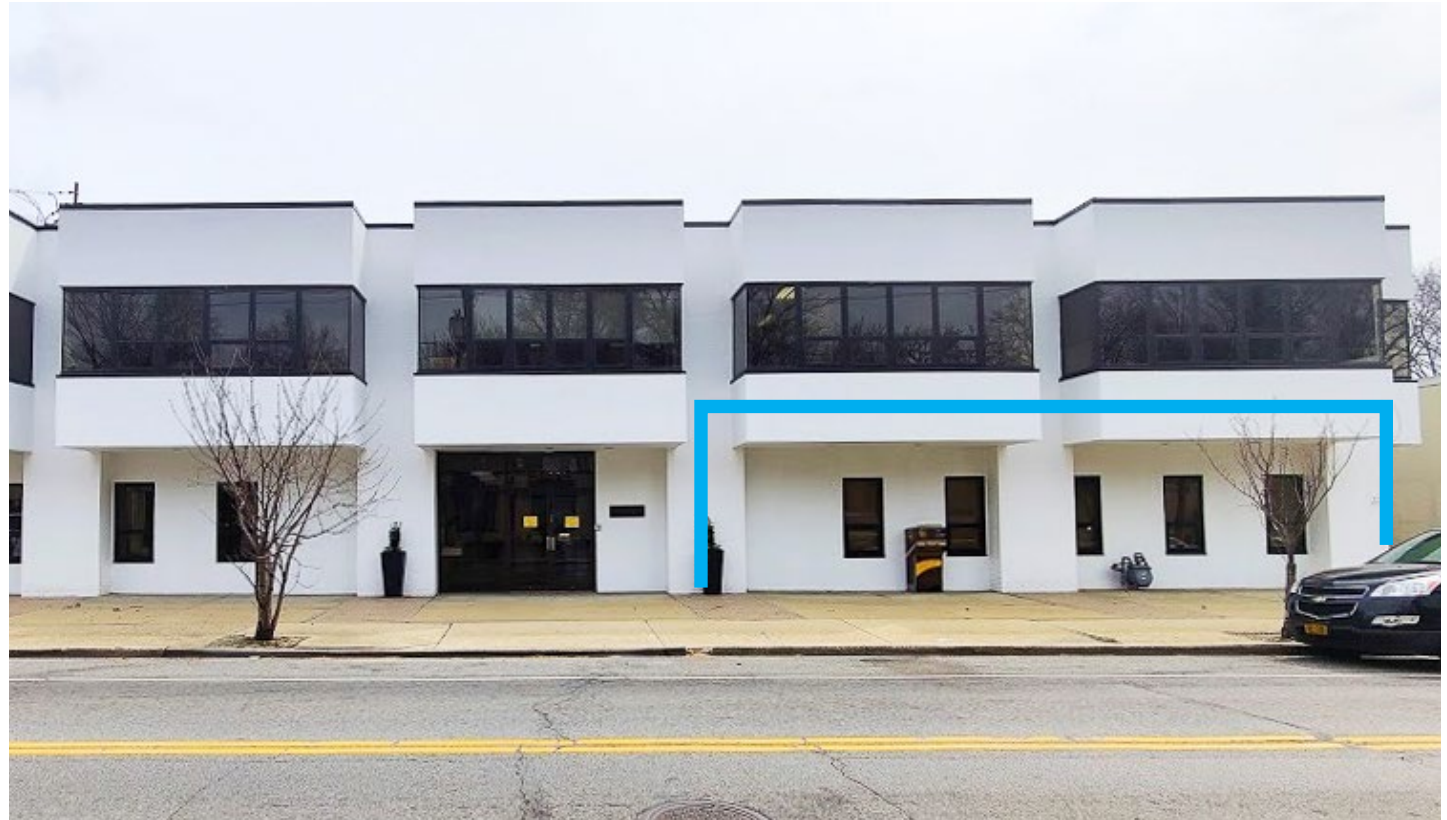
Long Island Rail Road

AARON HAROUNIAN

Associate

212.468.5957

aharounian@meridiancapital.com



MERIDIAN
RETAIL LEASING

All information supplied is from sources deemed reliable and is furnished subject to errors, omissions, modifications, removal of the listing from sale or lease, and to any listing conditions, including the rates and manner of payment of commissions for particular offerings imposed by Meridian Capital Group. This information may include estimates and projections prepared by Meridian Capital Group with respect to future events, and these future events may or may not actually occur. Such estimates and projections reflect various assumptions concerning anticipated results. While Meridian Capital Group believes these assumptions are reasonable, there can be no assurance that any of these estimates and projections will be correct. Therefore, actual results may vary materially from these estimates and projections. Any square footage dimensions set forth are approximate.

346 WESTBURY AVENUE

CARLE PLACE, LONG ISLAND | Between Silverlake Boulevard and Rushmore Avenue

OFFICE FOR LEASE



INTERIOR

AARON HAROUNIAN

Associate

212.468.5957

aharounian@meridiancapital.com



MERIDIAN
RETAIL LEASING

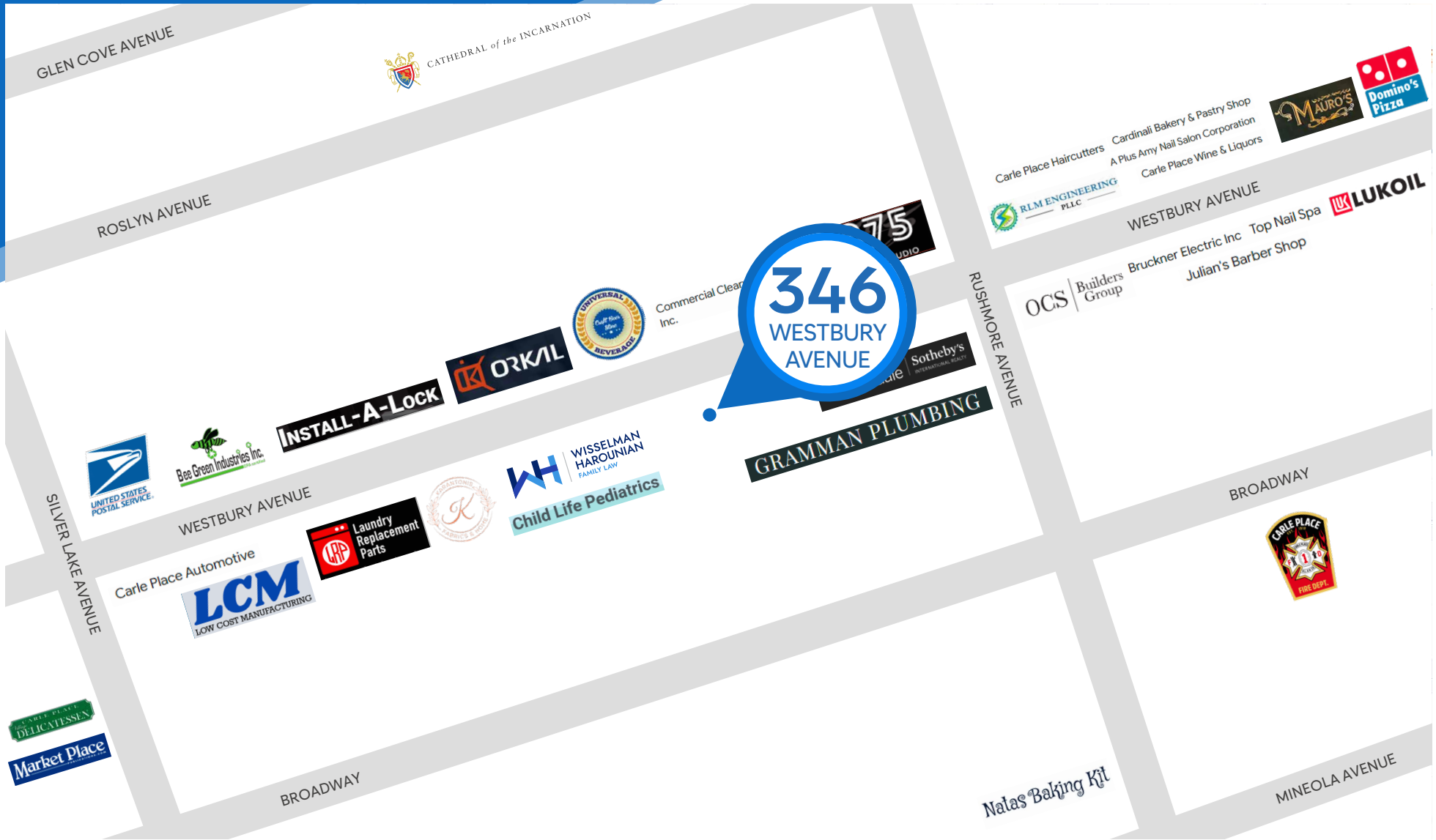
All information supplied is from sources deemed reliable and is furnished subject to errors, omissions, modifications, removal of the listing from sale or lease, and to any listing conditions, including the rates and manner of payment of commissions for particular offerings imposed by Meridian Capital Group. This information may include estimates and projections prepared by Meridian Capital Group with respect to future events, and these future events may or may not actually occur. Such estimates and projections reflect various assumptions concerning anticipated results. While Meridian Capital Group believes these assumptions are reasonable, there can be no assurance that any of these estimates and projections will be correct. Therefore, actual results may vary materially from these estimates and projections. Any square footage dimensions set forth are approximate.

346 WESTBURY AVENUE

CARLE PLACE, LONG ISLAND | Between Silverlake Boulevard and Rushmore Avenue

OFFICE FOR LEASE

NEIGHBORS



AARON HAROUNIAN

Associate
212.468.5957
aharounian@meridiancapital.com



MERIDIAN
RETAIL LEASING

All information supplied is from sources deemed reliable and is furnished subject to errors, omissions, modifications, removal of the listing from sale or lease, and to any listing conditions, including the rates and manner of payment of commissions for particular offerings imposed by Meridian Capital Group. This information may include estimates and projections prepared by Meridian Capital Group with respect to future events, and these future events may or may not actually occur. Such estimates and projections reflect various assumptions concerning anticipated results. While Meridian Capital Group believes these assumptions are reasonable, there can be no assurance that any of these estimates and projections will be correct. Therefore, actual results may vary materially from these estimates and projections. Any square footage dimensions set forth are approximate.