

233

WEST 125TH STREET HARLEM, NYC

Between Frederick Douglass & Adam
Clayton Powell Jr. Boulevards

RETAIL/OFFICE FOR LEASE

APPROXIMATE SIZE

2nd Floor: 20,320 SF

ASKING RENT

\$55 PSF

POSSESSION

Immediate

TERM

5-10 Years

COMMENTS

- Entrance directly on 125th Street through the historic atrium shared with the hotel and Apollo Theater
- Space features a blend of classic architectural finishes with modern design
- High ceilings throughout
- Ideal for professional offices, creative studios, wellness practices, and fashion retailers
- Steps from Victoria Tower Residences featuring 191-units and the Balton Commons featuring 37-units
- Heavy foot traffic and strong co-tenancy

NEIGHBORS

Chick Fil A • America's Kids • Planet Fitness • MAC
• KFC • GAP • Foot Locker • Banana Republic • Old Navy • Chipotle • PC Richard & Son • AMC Theatres

TRANSPORTATION



DANE HARLOWE

Director
212.468.5966
dharlowe@meridiancapital.com

NOAM AZIZ

Director
212.468.5984
naziz@meridiancapital.com

NATHAN SHABOT

Associate
212.468.5933
nshabot@meridiancapital.com

ARIEL ILIAN

Associate
212.468.5986
ailian@meridiancapital.com



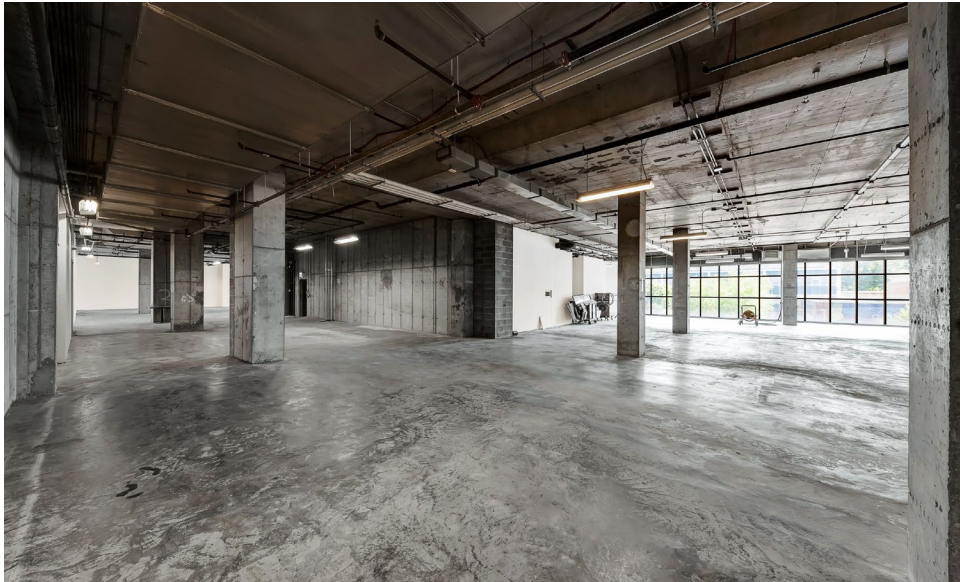
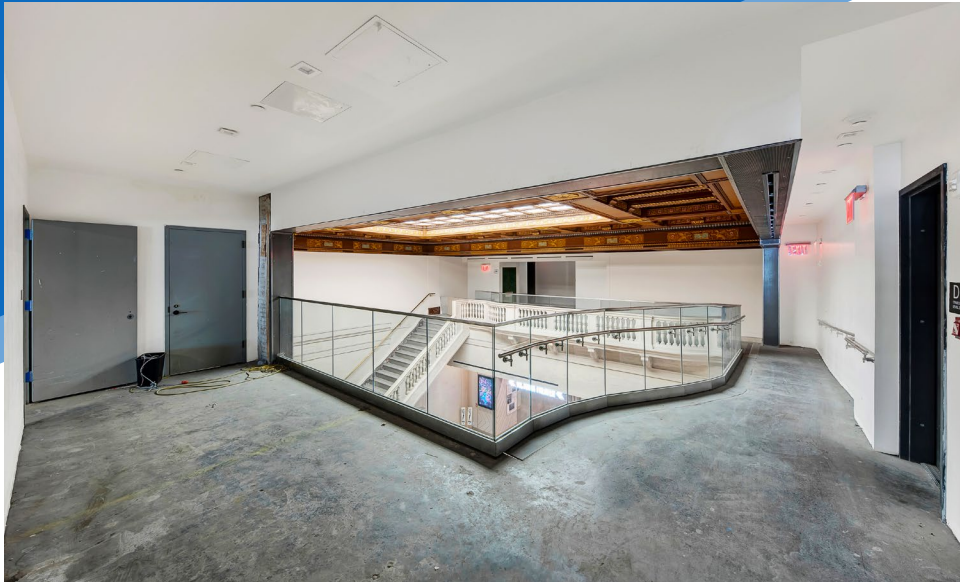
MERIDIAN
RETAIL LEASING

All information supplied is from sources deemed reliable and is furnished subject to errors, omissions, modifications, removal of the listing from sale or lease, and to any listing conditions, including the rates and manner of payment of commissions for particular offerings imposed by Meridian Capital Group. This information may include estimates and projections prepared by Meridian Capital Group with respect to future events, and these future events may or may not actually occur. Such estimates and projections reflect various assumptions concerning anticipated results. While Meridian Capital Group believes these assumptions are reasonable, there can be no assurance that any of these estimates and projections will be correct. Therefore, actual results may vary materially from these estimates and projections. Any square footage dimensions set forth are approximate.

233 WEST 125TH STREET

HARLEM, NYC | Between Frederick Douglass & Adam Clayton Powell Jr. Boulevards

RETAIL/OFFICE FOR LEASE



INTERIOR

DANE HARLOWE

Director
212.468.5966
dharlowe@meridiancapital.com

NOAM AZIZ

Director
212.468.5984
naziz@meridiancapital.com

NATHAN SHABOT

Associate
212.468.5933
nshabot@meridiancapital.com

ARIEL ILIAN

Associate
212.468.5986
ailian@meridiancapital.com



MERIDIAN
RETAIL LEASING

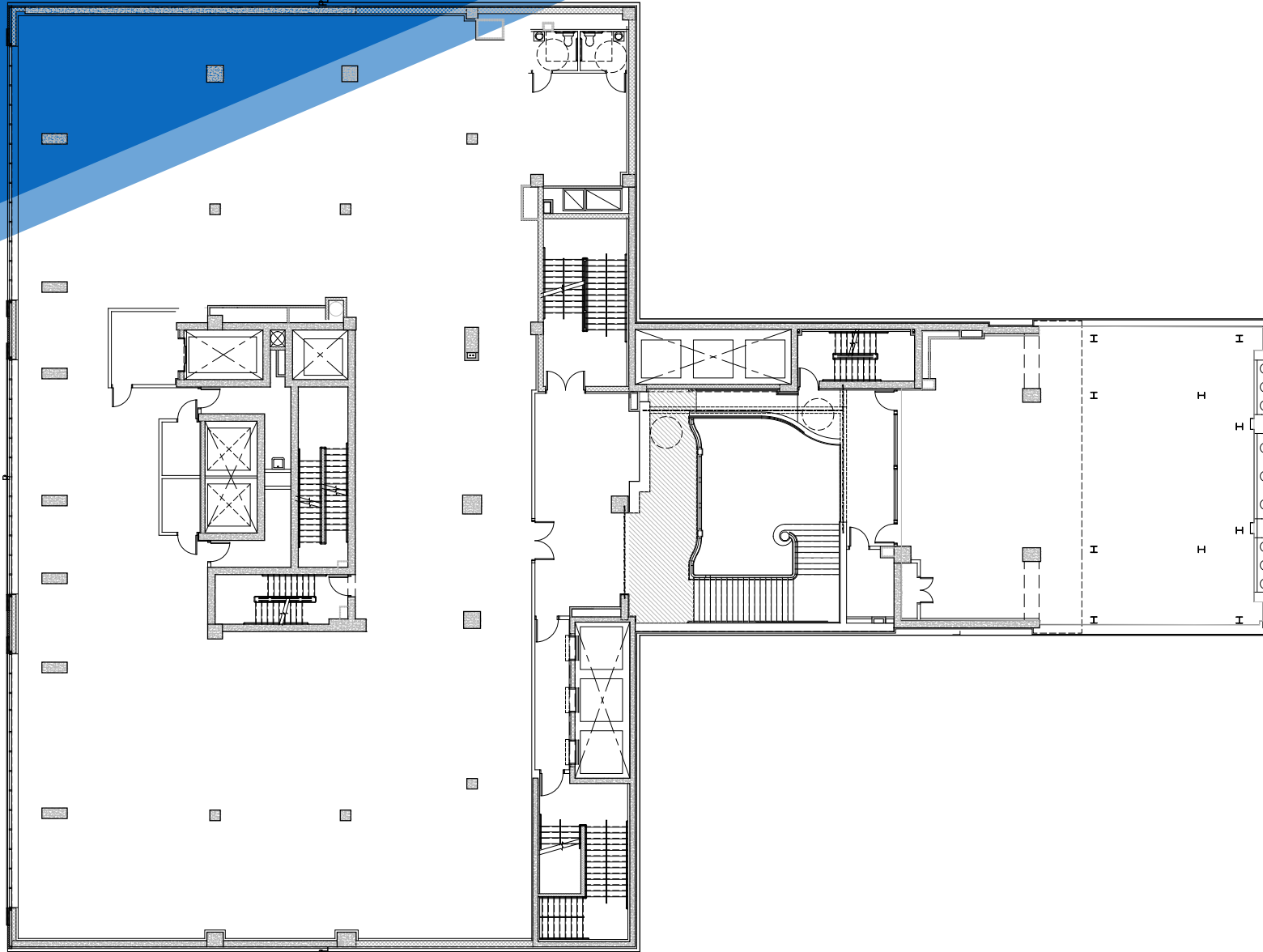
All information supplied is from sources deemed reliable and is furnished subject to errors, omissions, modifications, removal of the listing from sale or lease, and to any listing conditions, including the rates and manner of payment of commissions for particular offerings imposed by Meridian Capital Group. This information may include estimates and projections prepared by Meridian Capital Group with respect to future events, and these future events may or may not actually occur. Such estimates and projections reflect various assumptions concerning anticipated results. While Meridian Capital Group believes these assumptions are reasonable, there can be no assurance that any of these estimates and projections will be correct. Therefore, actual results may vary materially from these estimates and projections. Any square footage dimensions set forth are approximate.

233 WEST 125TH STREET

HARLEM, NYC | Between Frederick Douglass & Adam Clayton Powell Jr. Boulevards

RETAIL/OFFICE FOR LEASE

FLOOR PLAN



DANE HARLOWE

Director
212.468.5966
dharlowe@meridiancapital.com

NOAM AZIZ

Director
212.468.5984
naziz@meridiancapital.com

NATHAN SHABOT

Associate
212.468.5933
nshabot@meridiancapital.com

ARIEL ILIAN

Associate
212.468.5986
ailian@meridiancapital.com



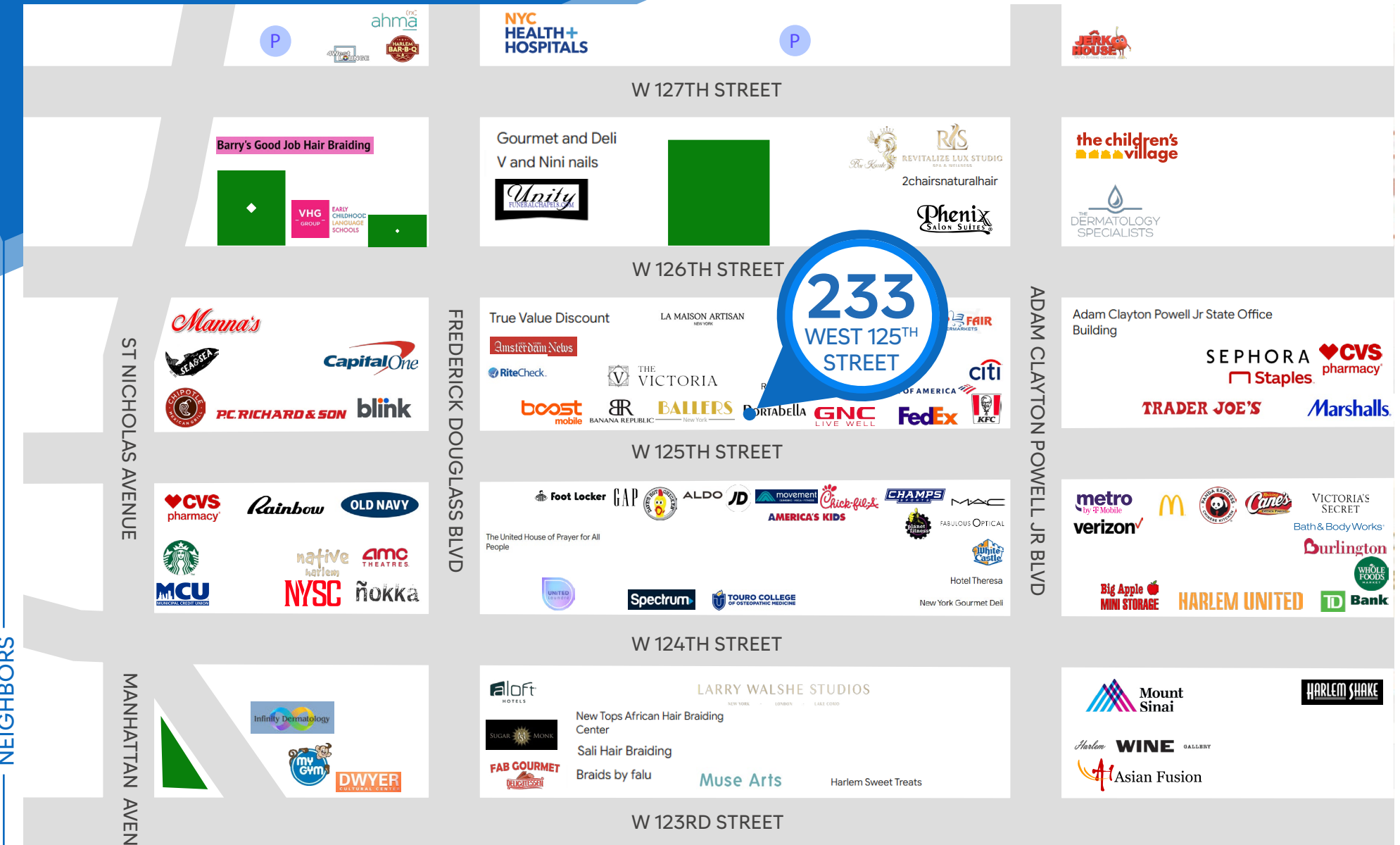
MERIDIAN
RETAIL LEASING

All information supplied is from sources deemed reliable and is furnished subject to errors, omissions, modifications, removal of the listing from sale or lease, and to any listing conditions, including the rates and manner of payment of commissions for particular offerings imposed by Meridian Capital Group. This information may include estimates and projections prepared by Meridian Capital Group with respect to future events, and these future events may or may not actually occur. Such estimates and projections reflect various assumptions concerning anticipated results. While Meridian Capital Group believes these assumptions are reasonable, there can be no assurance that any of these estimates and projections will be correct. Therefore, actual results may vary materially from these estimates and projections. Any square footage dimensions set forth are approximate.

233 WEST 125TH STREET

HARLEM, NYC | Between Frederick Douglass & Adam Clayton Powell Jr. Boulevards

RETAIL/OFFICE FOR LEASE



NEIGHBORS

DANE HARLOWE

Director
212.468.5966
dharlowe@meridiancapital.com

NOAM AZIZ

Director
212.468.5984
naziz@meridiancapital.com

NATHAN SHABOT

Associate
212.468.5933
nshabot@meridiancapital.com

ARIEL ILIAN

Associate
212.468.5986
aillian@meridiancapital.com



MERIDIAN
RETAIL LEASING

All information supplied is from sources deemed reliable and is furnished subject to errors, omissions, modifications, removal of the listing from sale or lease, and to any listing conditions, including the rates and manner of payment of commissions for particular offerings imposed by Meridian Capital Group. This information may include estimates and projections prepared by Meridian Capital Group with respect to future events, and these future events may or may not actually occur. Such estimates and projections reflect various assumptions concerning anticipated results. While Meridian Capital Group believes these assumptions are reasonable, there can be no assurance that any of these estimates and projections will be correct. Therefore, actual results may vary materially from these estimates and projections. Any square footage dimensions set forth are approximate.