

233

WEST 125TH STREET HARLEM, NYC

Between Frederick Douglass & Adam
Clayton Powell Jr. Boulevards

RETAIL FOR LEASE

APPROXIMATE SIZE

1,100 SF + Basement

ASKING RENT

\$15,000/Month

POSSESSION

Immediate

TERM

5-10 Years

FRONTAGE

20 FT

COMMENTS

- Retail attached to the Renaissance New York Harlem Hotel with 211-rooms and the Apollo Theater
- Open layout with no columns
- Perfect for retail, grab & go, café, gallery, or wellness
- No venting possible
- Heavy foot traffic and strong national co-tenancy

NEIGHBORS

Chick Fil A • America's Kids • Planet Fitness • MAC
• KFC • GAP • Foot Locker • Banana Republic • Old
Navy • Chipotle • PC Richard & Son • AMC Theatres

TRANSPORTATION



PROPERTY INFORMATION

DANE HARLOWE

Director
212.468.5966
dharlowe@meridiancapital.com

NOAM AZIZ

Director
212.468.5984
naziz@meridiancapital.com

NATHAN SHABOT

Associate
212.468.5933
nshabot@meridiancapital.com

ARIEL ILIAN

Associate
212.468.5986
ailian@meridiancapital.com



MERIDIAN
RETAIL LEASING

All information supplied is from sources deemed reliable and is furnished subject to errors, omissions, modifications, removal of the listing from sale or lease, and to any listing conditions, including the rates and manner of payment of commissions for particular offerings imposed by Meridian Capital Group. This information may include estimates and projections prepared by Meridian Capital Group with respect to future events, and these future events may or may not actually occur. Such estimates and projections reflect various assumptions concerning anticipated results. While Meridian Capital Group believes these assumptions are reasonable, there can be no assurance that any of these estimates and projections will be correct. Therefore, actual results may vary materially from these estimates and projections. Any square footage dimensions set forth are approximate.

233 WEST 125TH STREET

HARLEM, NYC | Between Frederick Douglass & Adam Clayton Powell Jr. Boulevards

RETAIL FOR LEASE



INTERIOR

DANE HARLOWE

Director
212.468.5966
dharlowe@meridiancapital.com

NOAM AZIZ

Director
212.468.5984
naziz@meridiancapital.com

NATHAN SHABOT

Associate
212.468.5933
nshabot@meridiancapital.com

ARIEL ILIAN

Associate
212.468.5986
ailian@meridiancapital.com



MERIDIAN
RETAIL LEASING

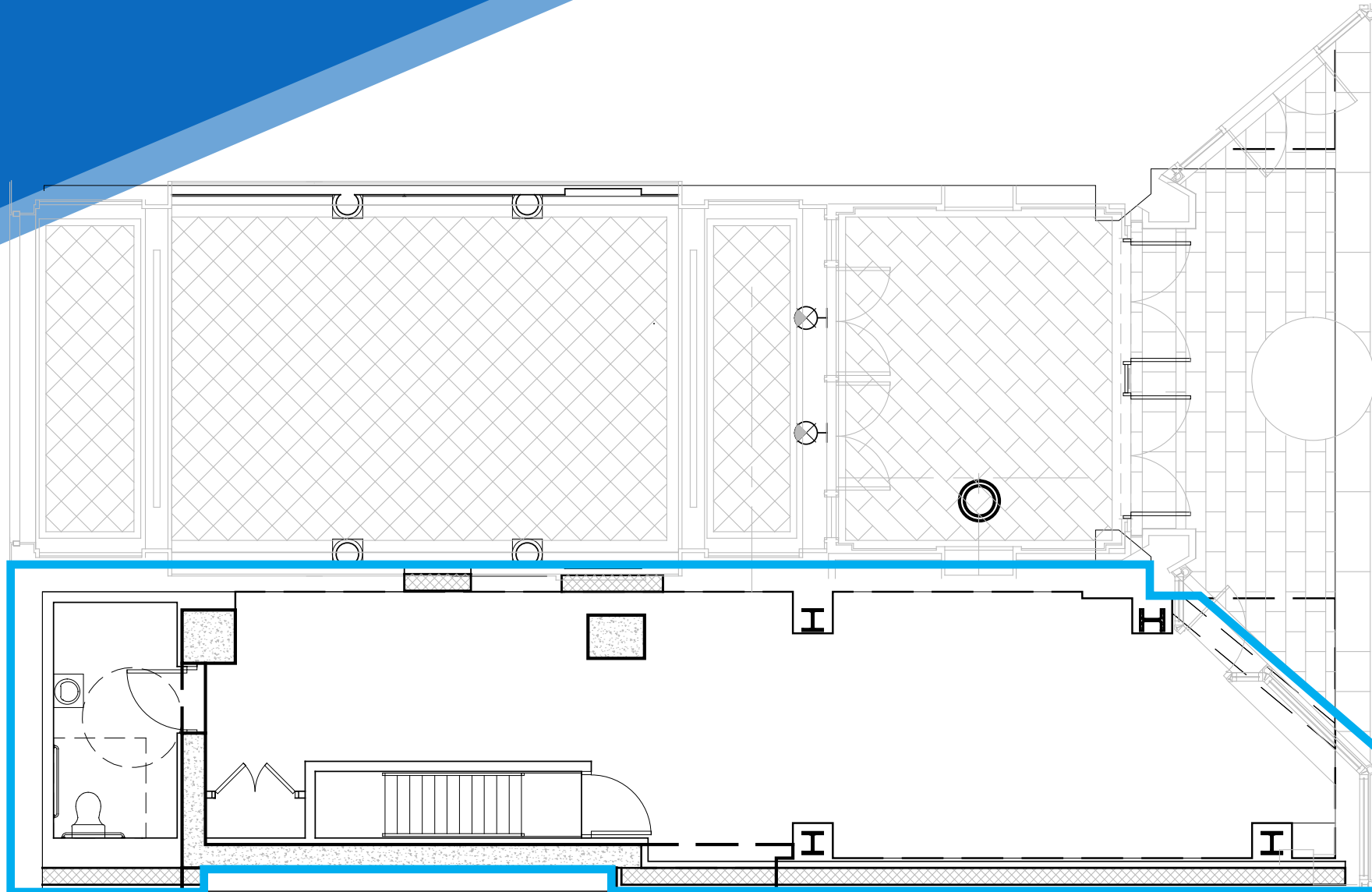
All information supplied is from sources deemed reliable and is furnished subject to errors, omissions, modifications, removal of the listing from sale or lease, and to any listing conditions, including the rates and manner of payment of commissions for particular offerings imposed by Meridian Capital Group. This information may include estimates and projections prepared by Meridian Capital Group with respect to future events, and these future events may or may not actually occur. Such estimates and projections reflect various assumptions concerning anticipated results. While Meridian Capital Group believes these assumptions are reasonable, there can be no assurance that any of these estimates and projections will be correct. Therefore, actual results may vary materially from these estimates and projections. Any square footage dimensions set forth are approximate.

233 WEST 125TH STREET

HARLEM, NYC | Between Frederick Douglass & Adam Clayton Powell Jr. Boulevards

RETAIL FOR LEASE

FLOOR PLAN



ENTRANCE ON WEST 125TH STREET

DANE HARLOWE

Director
212.468.5966
dharlowe@meridiancapital.com

NOAM AZIZ

Director
212.468.5984
naziz@meridiancapital.com

NATHAN SHABOT

Associate
212.468.5933
nshabot@meridiancapital.com

ARIEL ILIAN

Associate
212.468.5986
ailian@meridiancapital.com



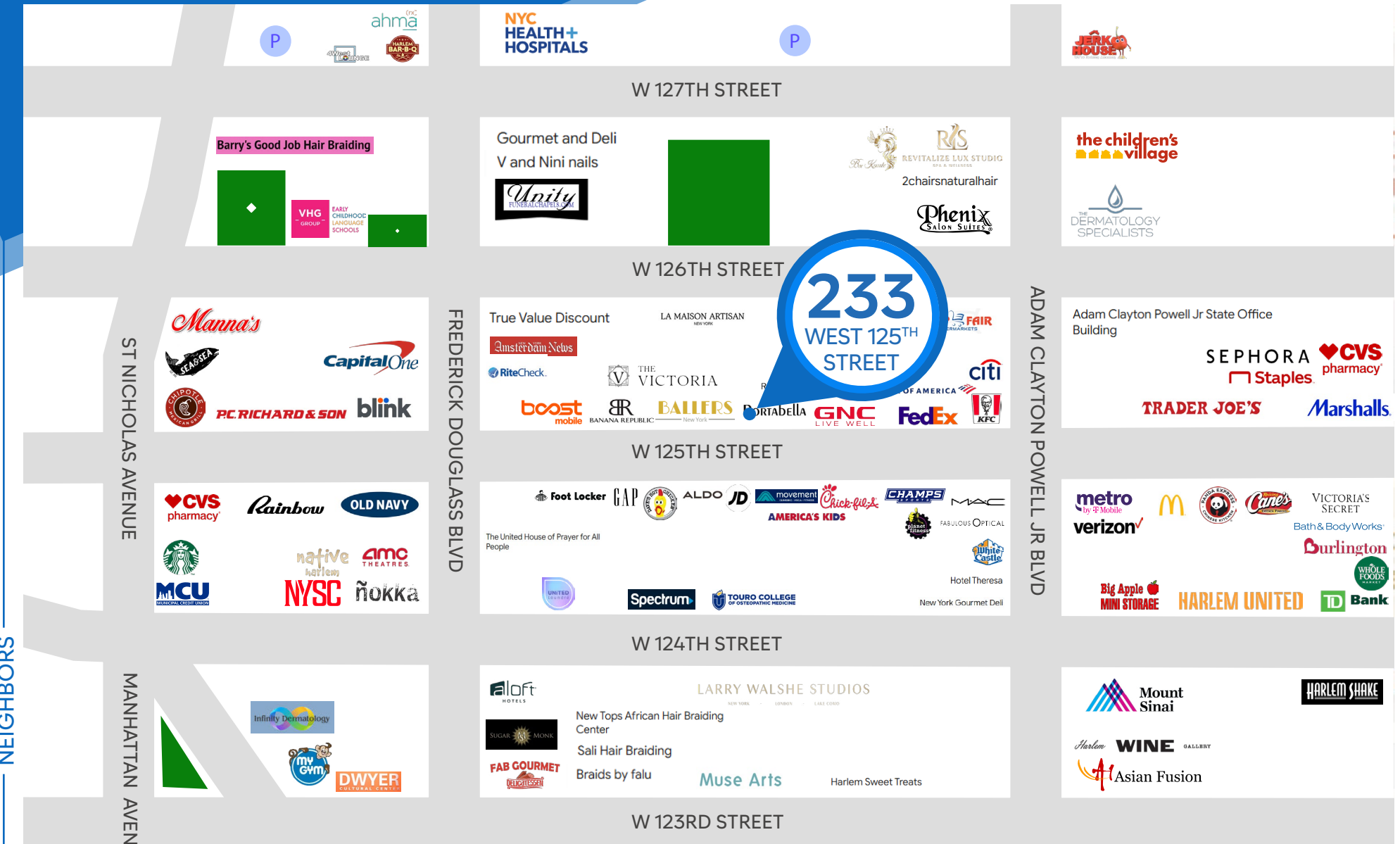
MERIDIAN
RETAIL LEASING

All information supplied is from sources deemed reliable and is furnished subject to errors, omissions, modifications, removal of the listing from sale or lease, and to any listing conditions, including the rates and manner of payment of commissions for particular offerings imposed by Meridian Capital Group. This information may include estimates and projections prepared by Meridian Capital Group with respect to future events, and these future events may or may not actually occur. Such estimates and projections reflect various assumptions concerning anticipated results. While Meridian Capital Group believes these assumptions are reasonable, there can be no assurance that any of these estimates and projections will be correct. Therefore, actual results may vary materially from these estimates and projections. Any square footage dimensions set forth are approximate.

233 WEST 125TH STREET

HARLEM, NYC | Between Frederick Douglass & Adam Clayton Powell Jr. Boulevards

RETAIL FOR LEASE



<p>DANE HARLOWE Director 212.468.5966 dharlowe@meridiancapital.com</p>	<p>NOAM AZIZ Director 212.468.5984 naziz@meridiancapital.com</p>	<p>NATHAN SHABOT Associate 212.468.5933 nshabot@meridiancapital.com</p>	<p>ARIEL ILIAN Associate 212.468.5986 ailian@meridiancapital.com</p>
---	---	--	---




MERIDIAN
RETAIL LEASING

All information supplied is from sources deemed reliable and is furnished subject to errors, omissions, modifications, removal of the listing from sale or lease, and to any listing conditions, including the rates and manner of payment of commissions for particular offerings imposed by Meridian Capital Group. This information may include estimates and projections prepared by Meridian Capital Group with respect to future events, and these future events may or may not actually occur. Such estimates and projections reflect various assumptions concerning anticipated results. While Meridian Capital Group believes these assumptions are reasonable, there can be no assurance that any of these estimates and projections will be correct. Therefore, actual results may vary materially from these estimates and projections. Any square footage dimensions set forth are approximate.