

210

WEST 80TH STREET UPPER WEST SIDE, NYC

Between Amsterdam Avenue & Broadway

RETAIL FOR LEASE

APPROXIMATE SIZE

Lower Level: 800 SF

ASKING RENT

\$4,500/Month

POSSESSION

Immediate

TERM

Negotiable

FRONTAGE

10 FT

COMMENTS

- Pristine white-box space for lease in the heart of the Upper West Side
- Located in a dense residential neighborhood
- High foot traffic
- Close to major transit

NEIGHBORS

Janie's Life-Changing Baked Goods • Laura Braunstein's Hair Studio • Green Power Wellness • Central Park Events • Alta Ares • Verizon • Sally's Laundramat

TRANSPORTATION



JAMES FAMULARO

President
646.658.7373
jfamularo@meridiancapital.com

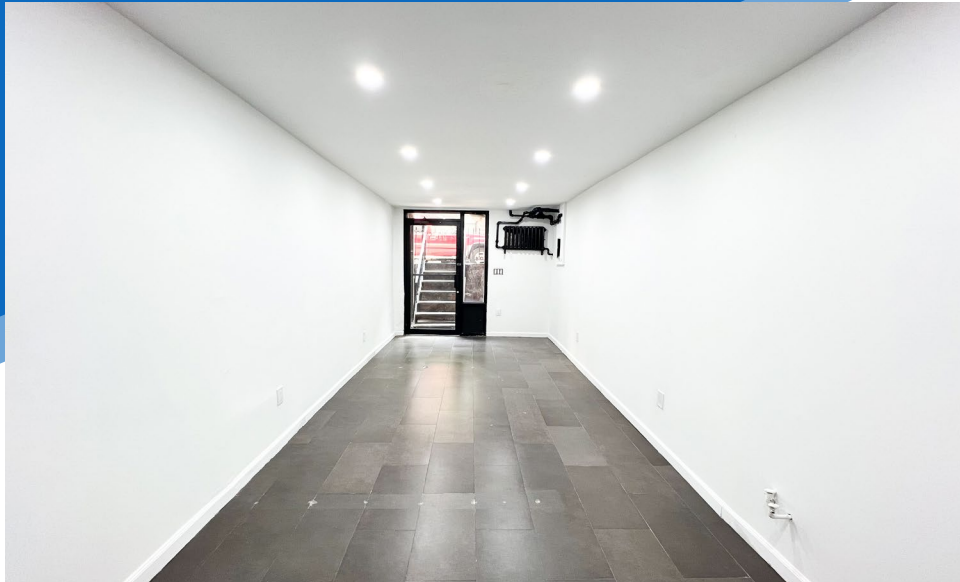
JORDAN LANGER

Senior Associate
212.468.5977
jlanger@meridiancapital.com



MERIDIAN
RETAIL LEASING

All information supplied is from sources deemed reliable and is furnished subject to errors, omissions, modifications, removal of the listing from sale or lease, and to any listing conditions, including the rates and manner of payment of commissions for particular offerings imposed by Meridian Capital Group. This information may include estimates and projections prepared by Meridian Capital Group with respect to future events, and these future events may or may not actually occur. Such estimates and projections reflect various assumptions concerning anticipated results. While Meridian Capital Group believes these assumptions are reasonable, there can be no assurance that any of these estimates and projections will be correct. Therefore, actual results may vary materially from these estimates and projections. Any square footage dimensions set forth are approximate.



INTERIOR

JAMES FAMULARO

President
646.658.7373
jfamularo@meridiancapital.com

JORDAN LANGER

Senior Associate
212.468.5977
jlanger@meridiancapital.com



MERIDIAN
RETAIL LEASING

UPPER WEST SIDE, NYC | Between Amsterdam Avenue and Broadway

NEIGHBORS

President
646.658.7373
jfamularo@meridiancapital.com

Senior Associate
212.468.5977
jlanger@meridiancapital.com

All information supplied is from sources deemed reliable and is furnished subject to errors, omissions, modifications, removal of the listing from sale or lease, and to any listing conditions, including the rates and manner of payment of commissions for particular offerings imposed by Meridian Capital Group. This information may include estimates and projections prepared by Meridian Capital Group with respect to future events, and these future events may or may not actually occur. Such estimates and projections reflect various assumptions concerning anticipated results. While Meridian Capital Group believes these assumptions are reasonable, there can be no assurance that any of these estimates and projections will be correct. Therefore, actual results may vary materially from these estimates and projections. Any square footage dimensions set forth are approximate.



MERIDIAN

RETAIL LEASING