

179

MESEROLE STREET WILLIAMSBURG, BROOKLYN

Between Humboldt Street & Graham Avenue

COMMUNITY FACILITY FOR LEASE

APPROXIMATE SIZE

Ground Floor: 1,017 SF

ASKING RENT

\$5,500/Month

POSSESSION

Immediate

TERM

Negotiable

FRONTAGE

20 FT

COMMENTS

- Brand new community facility for lease in the heart of Williamsburg
- Located in a dense residential neighborhood
- High foot traffic
- One-block from the L train at Montrose Avenue
- Ideal for daycares, physical therapists, etc.

NEIGHBORS

The Graham • Hi-Hello Crepes • Sizzle and Swizzle
• Broadway Stages • Telescope Audio • Food Bazaar • Hairrari • Pizzette • Lulla's • Casa Ora

TRANSPORTATION



PROPERTY INFORMATION

JAMES FAMULARO

President
646.658.7373
jfamularo@meridiancapital.com

JORDAN LANGER

Senior Associate
212.468.5977
jlanger@meridiancapital.com



MERIDIAN
RETAIL LEASING

All information supplied is from sources deemed reliable and is furnished subject to errors, omissions, modifications, removal of the listing from sale or lease, and to any listing conditions, including the rates and manner of payment of commissions for particular offerings imposed by Meridian Capital Group. This information may include estimates and projections prepared by Meridian Capital Group with respect to future events, and these future events may or may not actually occur. Such estimates and projections reflect various assumptions concerning anticipated results. While Meridian Capital Group believes these assumptions are reasonable, there can be no assurance that any of these estimates and projections will be correct. Therefore, actual results may vary materially from these estimates and projections. Any square footage dimensions set forth are approximate.

179 MESEROLE STREET

WILLIAMSBURG, BROOKLYN | Between Humboldt Street and Graham Avenue

COMMUNITY FACILITY FOR LEASE



INTERIOR

JAMES FAMULARO

President
646.658.7373
jfamularo@meridiancapital.com

JORDAN LANGER

Senior Associate
212.468.5977
jlanger@meridiancapital.com



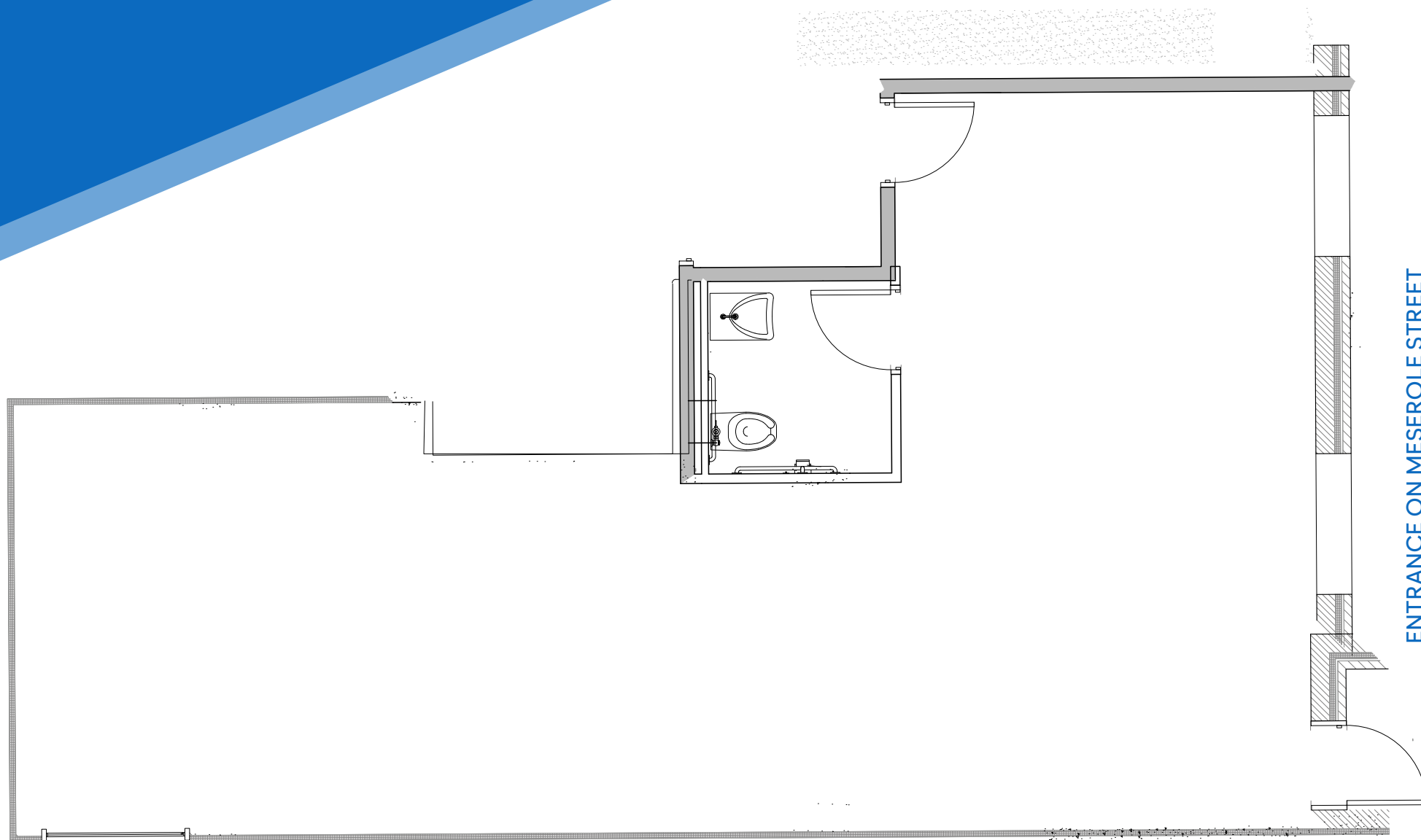
MERIDIAN
RETAIL LEASING

All information supplied is from sources deemed reliable and is furnished subject to errors, omissions, modifications, removal of the listing from sale or lease, and to any listing conditions, including the rates and manner of payment of commissions for particular offerings imposed by Meridian Capital Group. This information may include estimates and projections prepared by Meridian Capital Group with respect to future events, and these future events may or may not actually occur. Such estimates and projections reflect various assumptions concerning anticipated results. While Meridian Capital Group believes these assumptions are reasonable, there can be no assurance that any of these estimates and projections will be correct. Therefore, actual results may vary materially from these estimates and projections. Any square footage dimensions set forth are approximate.

179 MESEROLE STREET
WILLIAMSBURG, BROOKLYN | Between Humboldt Street and Graham Avenue

COMMUNITY FACILITY FOR LEASE

FLOOR PLAN



JAMES FAMULARO

President
646.658.7373
jfamularo@meridiancapital.com

JORDAN LANGER

Senior Associate
212.468.5977
jlanger@meridiancapital.com



MERIDIAN
RETAIL LEASING

All information supplied is from sources deemed reliable and is furnished subject to errors, omissions, modifications, removal of the listing from sale or lease, and to any listing conditions, including the rates and manner of payment of commissions for particular offerings imposed by Meridian Capital Group. This information may include estimates and projections prepared by Meridian Capital Group with respect to future events, and these future events may or may not actually occur. Such estimates and projections reflect various assumptions concerning anticipated results. While Meridian Capital Group believes these assumptions are reasonable, there can be no assurance that any of these estimates and projections will be correct. Therefore, actual results may vary materially from these estimates and projections. Any square footage dimensions set forth are approximate.

179 MESEROLE STREET

WILLIAMSBURG, BROOKLYN | Between Humboldt Street and Graham Avenue

COMMUNITY FACILITY FOR LEASE

Laundry Mart

Thick
ICE CREAM

FOOD
BAZAAR
SUPERMARKET



SCHOLES STREET

Pizzette
PIZZA • COCKTAILS • OYSTERS

NEW MEXICO PLACE
Autentica Comida Mexicana

EMBLEM



Warique
PERUVIAN CUISINE GARDEN

GRAHAM AVENUE

Mike Deli & Grill

Lucy's Lucky Dogs

Mountain beauty salon

HI HELLO CREPES



Sizzle and Swizzle



HUMBOLDT STREET



KARAOKE
HOUSE



LAUNDROMAT



MESEROLE STREET

Angel Deli Grocery F&C Corp.

502 BIKE SHOP INC



Chiara's Pizzeria

Graham
Laundromat

Faith's Food



GARDEN GOURMET DELI & GRILL

LUCKYBIRD CAKE

Marcela's
Bakery & More Bar

Have A Bagel on Bushwick Ave.



Plantega
Always 100% Plant-Based



L Stop Gourmet Deli

NEIGHBORS

JAMES FAMULARO

President
646.658.7373
jfamularo@meridiancapital.com

JORDAN LANGER

Senior Associate
212.468.5977
jlanger@meridiancapital.com



MERIDIAN
RETAIL LEASING

All information supplied is from sources deemed reliable and is furnished subject to errors, omissions, modifications, removal of the listing from sale or lease, and to any listing conditions, including the rates and manner of payment of commissions for particular offerings imposed by Meridian Capital Group. This information may include estimates and projections prepared by Meridian Capital Group with respect to future events, and these future events may or may not actually occur. Such estimates and projections reflect various assumptions concerning anticipated results. While Meridian Capital Group believes these assumptions are reasonable, there can be no assurance that any of these estimates and projections will be correct. Therefore, actual results may vary materially from these estimates and projections. Any square footage dimensions set forth are approximate.