

# 1691

## ANTHONY AVENUE CLAREMONT, BRONX

Between East 173<sup>rd</sup> & 174<sup>th</sup> Streets

RETAIL/OFFICE FOR LEASE

### APPROXIMATE SIZE

Ground Floor: 1,200 SF

### ASKING RENT

Upon Request

### POSSESSION

Immediate

### TERM

Negotiable

### FRONTAGE

50 FT

### COMMENTS

- Newly renovated with HVAC unit in place
- High ceilings
- Ideal for retail/office/storage
- Steps from entrance to Cross Bronx Expressway
- All uses considered

### NEIGHBORS

Edison Deli Grocery • Shirt Me Now • Taco Bell • KFC  
• Sunoco • Pastor Auto Body • Shell • Tigre Pizza

### TRANSPORTATION

B D 4



### BEN BIBERAJ

Senior Director  
703.434.1461

bbiberaj@meridiancapital.com

### JOSEPH HARARY

Director  
212.468.5978

jharary@meridiancapital.com

### DANNY HEREDIA

Associate  
212.468.5905

dheredia@meridiancapital.com

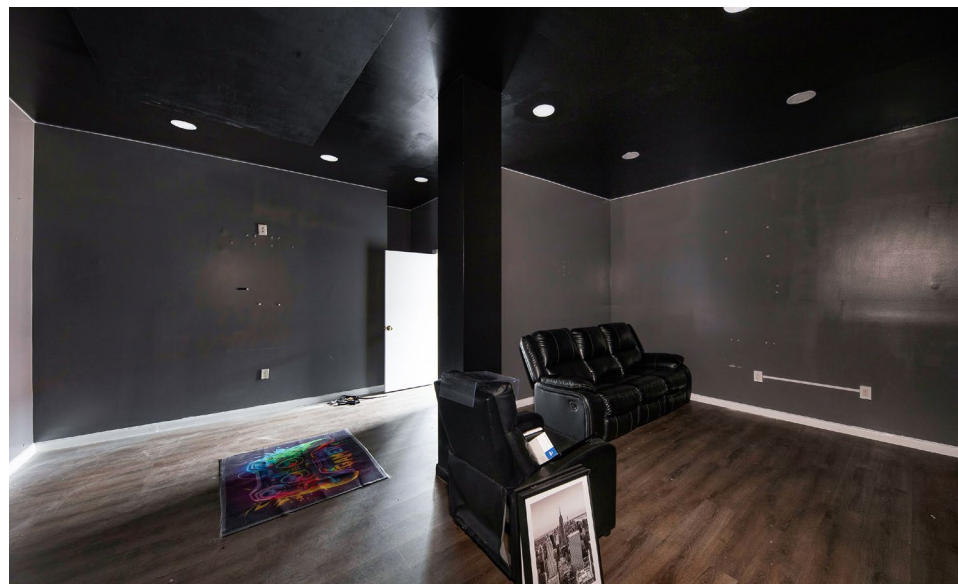
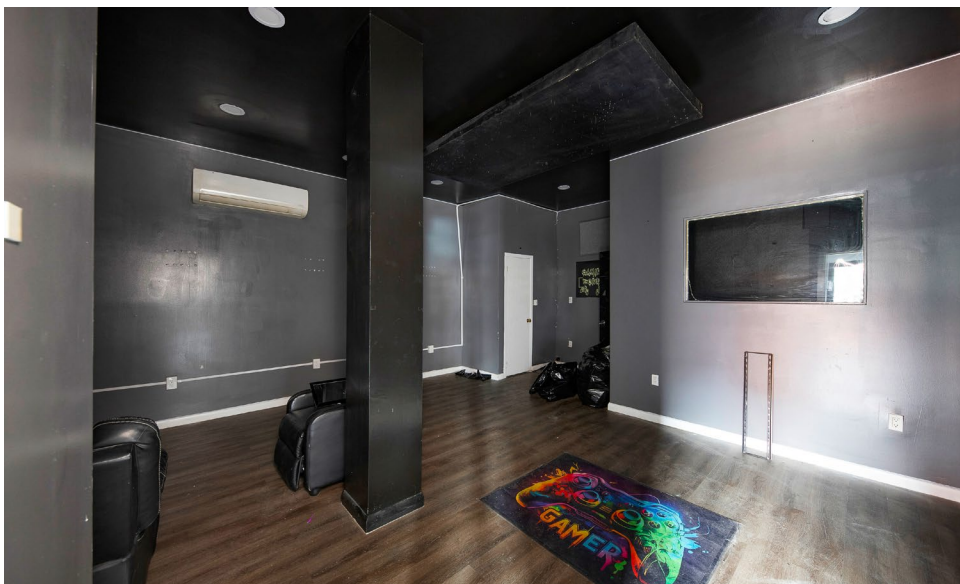


All information supplied is from sources deemed reliable and is furnished subject to errors, omissions, modifications, removal of the listing from sale or lease, and to any listing conditions, including the rates and manner of payment of commissions for particular offerings imposed by Meridian Capital Group. This information may include estimates and projections prepared by Meridian Capital Group with respect to future events, and these future events may or may not actually occur. Such estimates and projections reflect various assumptions concerning anticipated results. While Meridian Capital Group believes these assumptions are reasonable, there can be no assurance that any of these estimates and projections will be correct. Therefore, actual results may vary materially from these estimates and projections. Any square footage dimensions set forth are approximate.



1691 ANTHONY AVENUE  
CLAREMONT, BRONX | Between East 173<sup>rd</sup> and 174<sup>th</sup> Streets

RETAIL/OFFICE FOR LEASE



INTERIOR

BEN BIBERAJ

Senior Director  
703.434.1461  
bbiberaj@meridiancapital.com

JOSEPH HARARY

Director  
212.468.5978  
jharary@meridiancapital.com

DANNY HEREDIA

Associate  
212.468.5905  
dheredia@meridiancapital.com

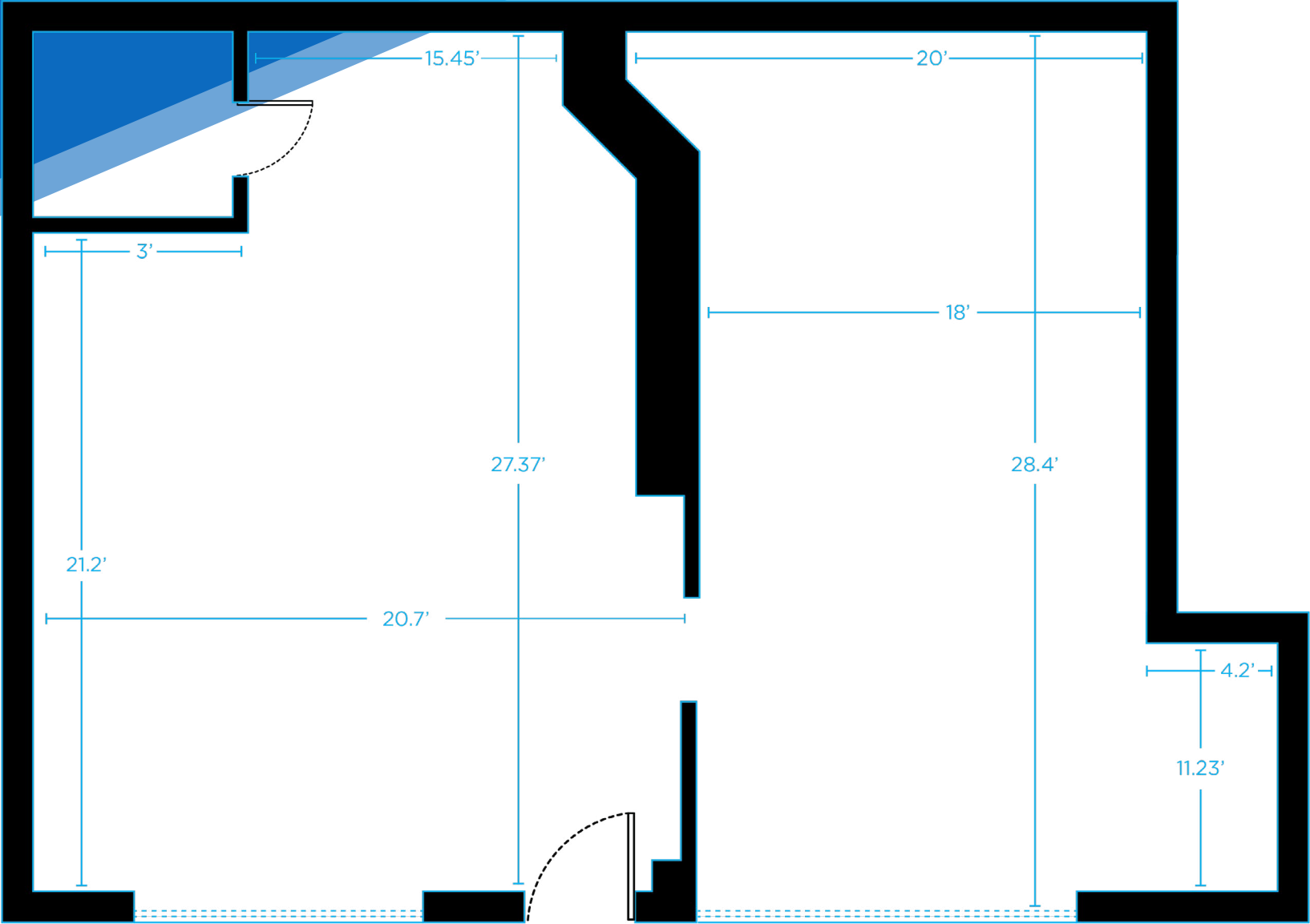


All information supplied is from sources deemed reliable and is furnished subject to errors, omissions, modifications, removal of the listing from sale or lease, and to any listing conditions, including the rates and manner of payment of commissions for particular offerings imposed by Meridian Capital Group. This information may include estimates and projections prepared by Meridian Capital Group with respect to future events, and these future events may or may not actually occur. Such estimates and projections reflect various assumptions concerning anticipated results. While Meridian Capital Group believes these assumptions are reasonable, there can be no assurance that any of these estimates and projections will be correct. Therefore, actual results may vary materially from these estimates and projections. Any square footage dimensions set forth are approximate.

1691 ANTHONY AVENUE  
CLAREMONT, BRONX | Between East 173<sup>rd</sup> and 174<sup>th</sup> Streets

RETAIL/OFFICE FOR LEASE

FLOOR PLAN



**BEN BIBERAJ**  
Senior Director  
703.434.1461  
bbiberaj@meridiancapital.com

**JOSEPH HARARY**  
Director  
212.468.5978  
jharary@meridiancapital.com

**DANNY HEREDIA**  
Associate  
212.468.5905  
dheredia@meridiancapital.com



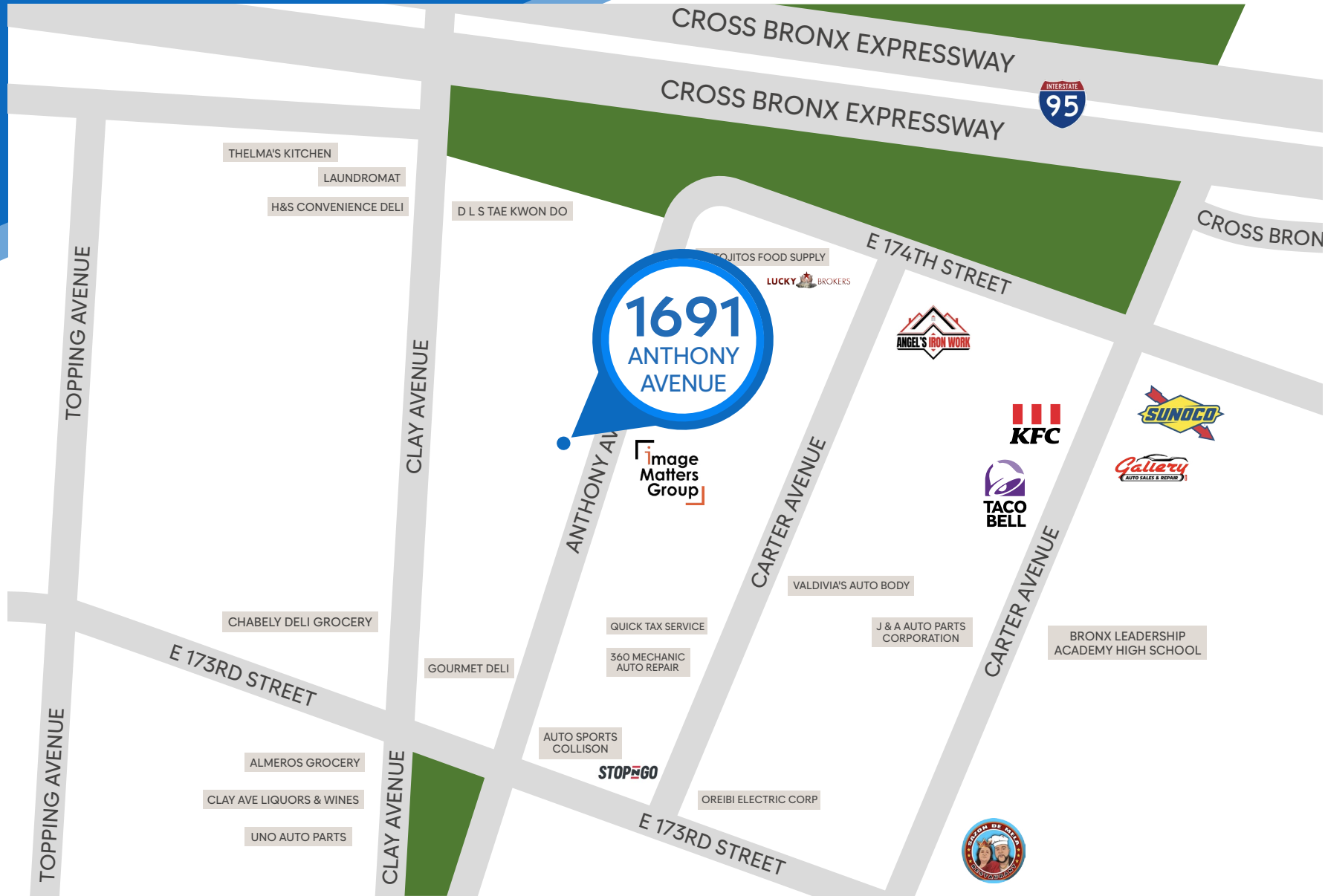
All information supplied is from sources deemed reliable and is furnished subject to errors, omissions, modifications, removal of the listing from sale or lease, and to any listing conditions, including the rates and manner of payment of commissions for particular offerings imposed by Meridian Capital Group. This information may include estimates and projections prepared by Meridian Capital Group with respect to future events, and these future events may or may not actually occur. Such estimates and projections reflect various assumptions concerning anticipated results. While Meridian Capital Group believes these assumptions are reasonable, there can be no assurance that any of these estimates and projections will be correct. Therefore, actual results may vary materially from these estimates and projections. Any square footage dimensions set forth are approximate.

## 1691 ANTHONY AVENUE

CLAREMONT, BRONX | Between East 173<sup>rd</sup> and 174<sup>th</sup> Streets

RETAIL/OFFICE FOR LEASE

NEIGHBORS



### BEN BIBERAJ

Senior Director  
703.434.1461

[bbiberaj@meridiancapital.com](mailto:bbiberaj@meridiancapital.com)

### JOSEPH HARARY

Director  
212.468.5978

[jharary@meridiancapital.com](mailto:jharary@meridiancapital.com)

### DANNY HEREDIA

Associate  
212.468.5905

[dheredia@meridiancapital.com](mailto:dheredia@meridiancapital.com)



All information supplied is from sources deemed reliable and is furnished subject to errors, omissions, modifications, removal of the listing from sale or lease, and to any listing conditions, including the rates and manner of payment of commissions for particular offerings imposed by Meridian Capital Group. This information may include estimates and projections prepared by Meridian Capital Group with respect to future events, and these future events may or may not actually occur. Such estimates and projections reflect various assumptions concerning anticipated results. While Meridian Capital Group believes these assumptions are reasonable, there can be no assurance that any of these estimates and projections will be correct. Therefore, actual results may vary materially from these estimates and projections. Any square footage dimensions set forth are approximate.