

# 166

## FIRST AVENUE EAST VILLAGE, NYC

Between East 10<sup>th</sup> & 11<sup>th</sup> Streets

RESTAURANT FOR LEASE

### APPROXIMATE SIZE

Ground Floor: 1,800 SF  
Legal Lower Level: 1,500 SF

### ASKING RENT

\$24,000/Month

### POSSESSION

Immediate

### TERM

Negotiable

### FRONTAGE

20 FT

### COMMENTS

- Previously "Ferns"
- Turn-key restaurant fully vented with gas
- 2 bars in place
- Previous full liquor license
- Kitchen in the lower level - 6 burners, flattop, and 2 fryers
- 3 bathrooms and 1 ADA on the ground floor

### NEIGHBORS

Joe & Pat's • Beron Beron • HAGS • Gelatoville  
Gelataria & Coffee • Apollo Bagels • Rowdy  
Rooster • Bananas • Momofuku Noodle Bar  
• Hearth • Motorino Pizza • Salma • S'MAC •  
Naks • Taverna East Village • Thursday Kitchen  
• Smithereens • Whitmans • Rosella • Café  
Mogador • Please Don't Tell • Hanoi House • Veselka

### TRANSPORTATION

4 5 6 L

### GREG GOLDBERG

Senior Director  
646.780.4904  
ggoldberg@meridiancapital.com



**MERIDIAN**  
RETAIL LEASING

All information supplied is from sources deemed reliable and is furnished subject to errors, omissions, modifications, removal of the listing from sale or lease, and to any listing conditions, including the rates and manner of payment of commissions for particular offerings imposed by Meridian Capital Group. This information may include estimates and projections prepared by Meridian Capital Group with respect to future events, and these future events may or may not actually occur. Such estimates and projections reflect various assumptions concerning anticipated results. While Meridian Capital Group believes these assumptions are reasonable, there can be no assurance that any of these estimates and projections will be correct. Therefore, actual results may vary materially from these estimates and projections. Any square footage dimensions set forth are approximate.



166 FIRST AVENUE  
EAST VILLAGE, NYC | Between East 10<sup>th</sup> and 11<sup>th</sup> Streets

RESTAURANT FOR LEASE



INTERIOR

GREG GOLDBERG

Senior Director  
646.780.4904  
ggoldberg@meridiancapital.com



**MERIDIAN**  
RETAIL LEASING

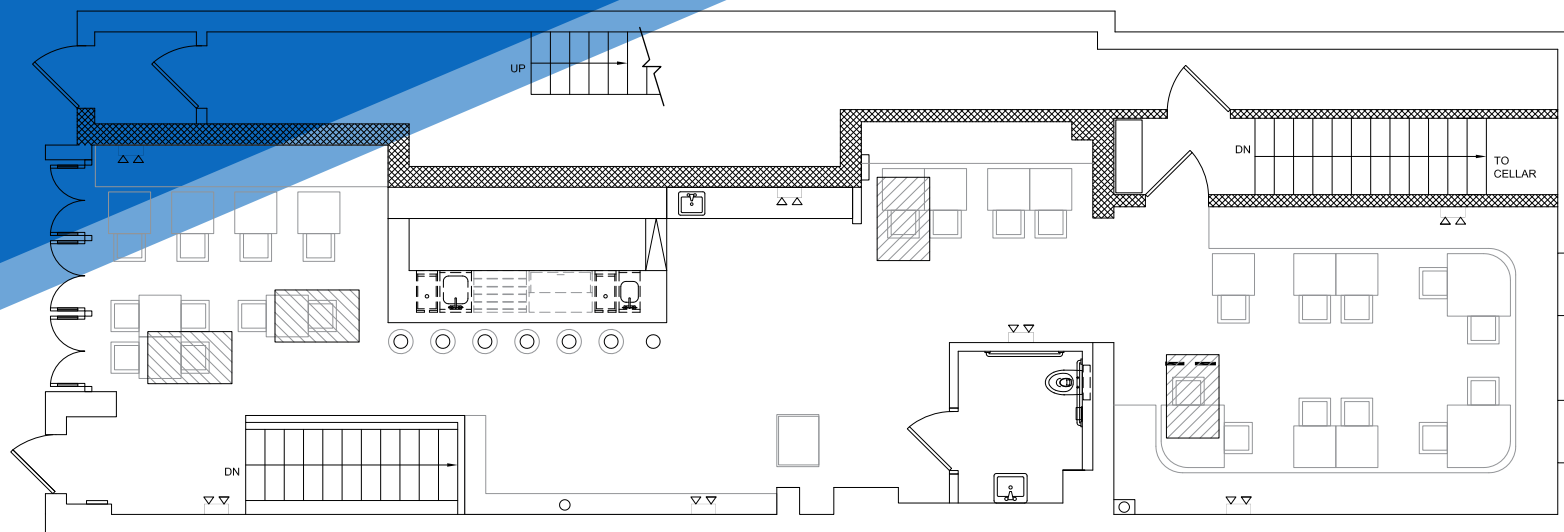
All information supplied is from sources deemed reliable and is furnished subject to errors, omissions, modifications, removal of the listing from sale or lease, and to any listing conditions, including the rates and manner of payment of commissions for particular offerings imposed by Meridian Capital Group. This information may include estimates and projections prepared by Meridian Capital Group with respect to future events, and these future events may or may not actually occur. Such estimates and projections reflect various assumptions concerning anticipated results. While Meridian Capital Group believes these assumptions are reasonable, there can be no assurance that any of these estimates and projections will be correct. Therefore, actual results may vary materially from these estimates and projections. Any square footage dimensions set forth are approximate.



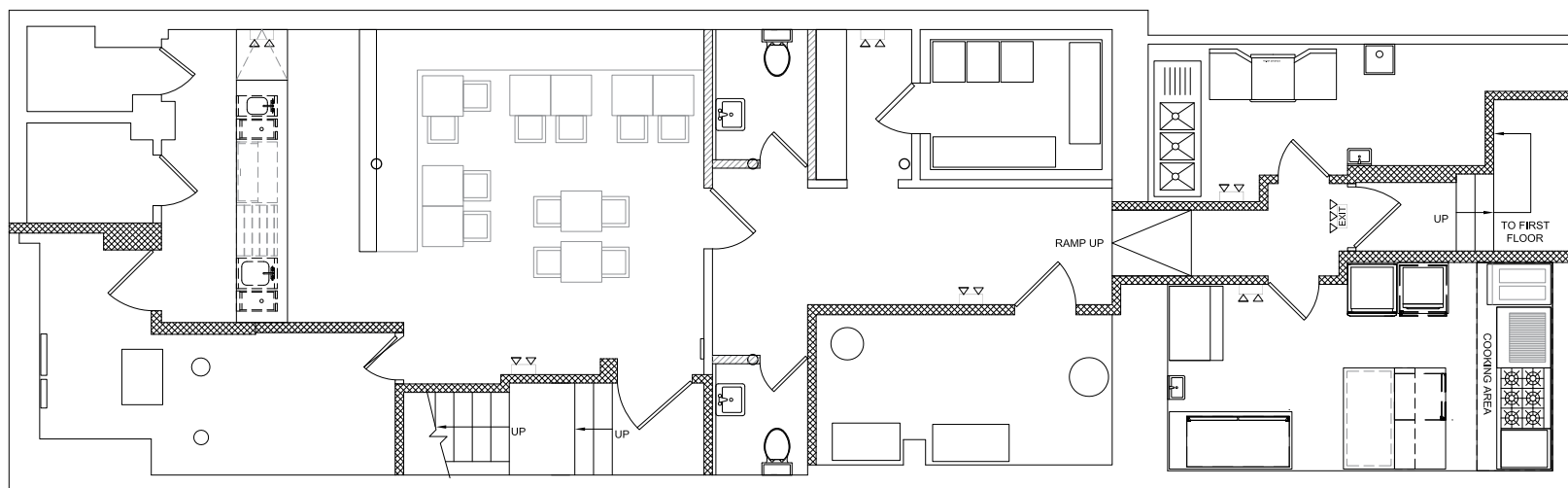
## 166 FIRST AVENUE

EAST VILLAGE, NYC | Between East 10<sup>th</sup> and 11<sup>th</sup> Streets

RESTAURANT FOR LEASE



GROUND FLOOR



LOWER LEVEL

FLOOR PLANS

### GREG GOLDBERG

Senior Director  
646.780.4904

ggoldberg@meridiancapital.com



**MERIDIAN**  
RETAIL LEASING

All information supplied is from sources deemed reliable and is furnished subject to errors, omissions, modifications, removal of the listing from sale or lease, and to any listing conditions, including the rates and manner of payment of commissions for particular offerings imposed by Meridian Capital Group. This information may include estimates and projections prepared by Meridian Capital Group with respect to future events, and these future events may or may not actually occur. Such estimates and projections reflect various assumptions concerning anticipated results. While Meridian Capital Group believes these assumptions are reasonable, there can be no assurance that any of these estimates and projections will be correct. Therefore, actual results may vary materially from these estimates and projections. Any square footage dimensions set forth are approximate.

166 FIRST AVENUE  
EAST VILLAGE, NYC | Between East 10<sup>th</sup> and 11<sup>th</sup> Streets

RESTAURANT FOR LEASE

NEIGHBORS

**166 FIRST AVENUE**

**E 11TH STREET**

Loco-Motion Dance Theatre, Danspace Project, 24 Hour Carpet Cleaning NY, peach IV, WIN SUR VINGT, ABACUS PHARMACY, HOKKAIDO, ATMI, URBAN OUTFITTERS, Marinara PIZZA, MATCHA HOUSE, Eyes on Second, SUSU LAB, Tobi's when my, Tobi's when my, ORGANIC CLEANERS, Le Bouquet NY, Vintage Reserve LLC, Quick Coin One Laundromat, Russo's, Uhasa, Noodle Bar, Pasta de Pasta, HAGS, Waking Studio NYC, Limited to One Record Shop, NOTAS BITTER, BANH MI, Beron Beron, Madina halal meat & grocery inc, HOPE, ATD FOURTH WORLD, BANANAS, Joe & Pat's, Live, From Lucie, Whistle Salon, Oh My Nail, FOX & JANE, PETRONIO, Sceni, EAST SIDE TAILO, westville, SUSHI, RED ONION, Maria Tinas, New York Center for Creativity and Dance, June, Clash City Tattoo, NEW YORK CLEAN.

**E 10TH STREET**

CHASE, UPS, LA CABRA, SHABU-TATSU, OVAL, Hard to Explain, Kamio Tech, lil sweet treat, Village Farm Grocery, SHW, ART+RAY, DAVEY'S, SPARK, RECORD NATIONS, Yosei Nails, Sew Good Cleaners, FANCY JUICE, RAKKA, Performance Space New York, M, movement research, JENNA'S, Sip + Co. East Village, EVIL KATIE, FLOREA, No Nazar Cafe, Ten Street Laundromat, THE EAST VILLAGE, BLANK STREET, baby, Village crisperie, ROLPHIE.

**E 9TH STREET**

VESELKA, Cabin, TE COMPANY, SAKAYA, DUO NYC, Lady Wong, East Village Pizzeria, PAQUITO'S, KIKO, Surprise Scoop, Crispy Burger, HighLife Burger, MOKO, aealeae, SAINT, isshiki, cafe mauld, Marylou, Club 57, HOLIDAY, Taqueria St. Marks Place, Shobu, CAFE MAGADOR, HANOI HOUSE, MOKYO, TABETOMO, TOMOKASE, ROSSELLA, LUCY'S, LOVE ONLY, SALVAGE CLOTH, NICEBROW, confectionery, Doc Holiday's, Top A Nail, EAST VILLAGE WINES, GOODNIGHT, Cecilia, East Village Books, MOODY TONGUE, THE LIONS, FRIGID NY, KOLACHI, Utshob Restaurant, East Village Organic, GRAFTON, Hen House NYC, E7 Deli & Cafe, 7-STREET BURGER, MARY ON, E7 Cleaners, SHINN NEW YORK, OVERTHROW HOSPITALITY, yuca bar, empellon, LUSTER, ST. DYMPHNAS, Benedicte, Ray's Candy Store, Upstairs, MARY ON, E7 Cleaners, SHINN NEW YORK, OVERTHROW HOSPITALITY, yuca bar.

**ST MARKS PLACE**

SI, OSAKANA, Northwell Health, NEW YORK CITY ELECTRICIANS, Vegan Grill, SipStudio, AT&T, The Jewish Board, BUMFLING SHOP, Lulu's Nails, Tin, nudibranch, WAKED ANGELS, COMPTON, ARIARI, Orpheum Theatre, OKIBORO, CROSSROADS, SPRINKLER, Uni K Wax, maidpro, KINKA, REFINERY7, REDGE, Big Bar, Blue & Gold Tavern, abash, TOKU7, Tile Bar, NOSH, 886, Cellos, POETICA COFFEE, B&H DAIRY, ILevel, Burp Castle, BANK OF AMERICA, OVERTHROW HOSPITALITY.

**E 7TH STREET**

GREG GOLDBERG

Senior Director

646.780.4904

ggoldberg@meridiancapital.com



**MERIDIAN**  
RETAIL LEASING

All information supplied is from sources deemed reliable and is furnished subject to errors, omissions, modifications, removal of the listing from sale or lease, and to any listing conditions, including the rates and manner of payment of commissions for particular offerings imposed by Meridian Capital Group. This information may include estimates and projections prepared by Meridian Capital Group with respect to future events, and these future events may or may not actually occur. Such estimates and projections reflect various assumptions concerning anticipated results. While Meridian Capital Group believes these assumptions are reasonable, there can be no assurance that any of these estimates and projections will be correct. Therefore, actual results may vary materially from these estimates and projections. Any square footage dimensions set forth are approximate.