

139

DUANE STREET TRIBECA, NYC

Between Church Street & West Broadway

RESTAURANT FOR LEASE

APPROXIMATE SIZE

2,300 SF + Basement

ASKING RENT

\$22,000/Month
\$300K Key-Money

POSSESSION

Immediate

TERM

6+ 5 Years

FRONTAGE

25 FT

COMMENTS

- Move-in ready Tribeca restaurant
- Entire restaurant underwent renovation in 2022
- Full 2AM liquor license in place
- Walk-in boxes in the basement

NEIGHBORS

Real Pilates • The Ness • Laser Away • Takahachi
Tribeca • Weather Up • Yoga Spark • Max
Restaurant • Fuze House • Skin Laundry • Forge
• Pure Barre • Zucker's Bagels & Smoked Fish

TRANSPORTATION

1 2 3 N Q R W A C E J Z



PROPERTY INFORMATION

JAMES FAMULARO

President
646.658.7373
jfamularo@meridiancapital.com

JACOB MAYER

Director
212.468.5926
jmayer@meridiancapital.com

MARCELO DEMORAES

Associate
212.468.5904
mdemoraes@meridiancapital.com



MERIDIAN
RETAIL LEASING

All information supplied is from sources deemed reliable and is furnished subject to errors, omissions, modifications, removal of the listing from sale or lease, and to any listing conditions, including the rates and manner of payment of commissions for particular offerings imposed by Meridian Capital Group. This information may include estimates and projections prepared by Meridian Capital Group with respect to future events, and these future events may or may not actually occur. Such estimates and projections reflect various assumptions concerning anticipated results. While Meridian Capital Group believes these assumptions are reasonable, there can be no assurance that any of these estimates and projections will be correct. Therefore, actual results may vary materially from these estimates and projections. Any square footage dimensions set forth are approximate.

139 DUANE STREET

TRIBECA, NYC | Between Church Street and West Broadway

RESTAURANT FOR LEASE



INTERIOR

JAMES FAMULARO

President
646.658.7373
jfamularo@meridiancapital.com

JACOB MAYER

Director
212.468.5926
jmayer@meridiancapital.com

MARCELO DEMORAES

Associate
212.468.5904
mdemoraes@meridiancapital.com



MERIDIAN
RETAIL LEASING

All information supplied is from sources deemed reliable and is furnished subject to errors, omissions, modifications, removal of the listing from sale or lease, and to any listing conditions, including the rates and manner of payment of commissions for particular offerings imposed by Meridian Capital Group. This information may include estimates and projections prepared by Meridian Capital Group with respect to future events, and these future events may or may not actually occur. Such estimates and projections reflect various assumptions concerning anticipated results. While Meridian Capital Group believes these assumptions are reasonable, there can be no assurance that any of these estimates and projections will be correct. Therefore, actual results may vary materially from these estimates and projections. Any square footage dimensions set forth are approximate.

139 DUANE STREET

TRIBECA, NYC | Between Church Street and West Broadway

RESTAURANT FOR LEASE

FLOOR PLAN | GROUND FLOOR



JAMES FAMULARO

President
646.658.7373
jfamularo@meridiancapital.com

JACOB MAYER

Director
212.468.5926
jmayer@meridiancapital.com

MARCELO DEMORAES

Associate
212.468.5904
mdemoraes@meridiancapital.com



MERIDIAN
RETAIL LEASING

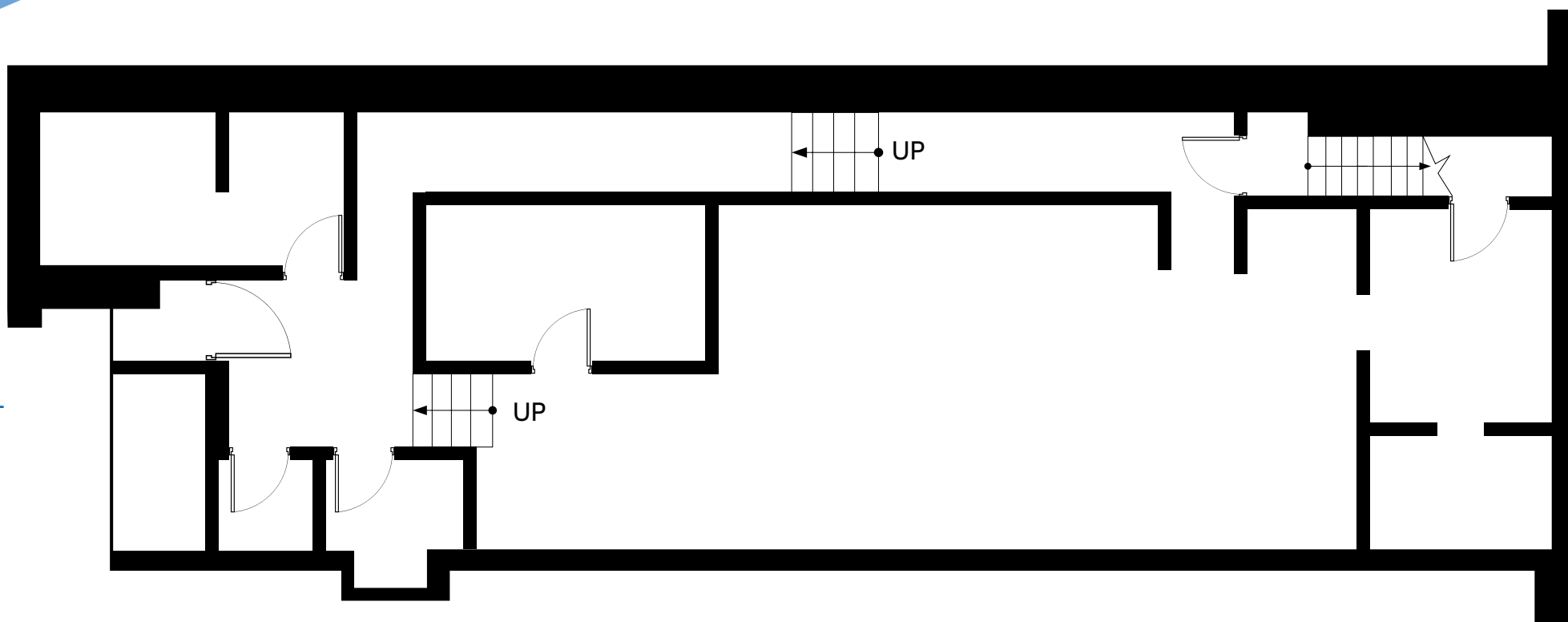
All information supplied is from sources deemed reliable and is furnished subject to errors, omissions, modifications, removal of the listing from sale or lease, and to any listing conditions, including the rates and manner of payment of commissions for particular offerings imposed by Meridian Capital Group. This information may include estimates and projections prepared by Meridian Capital Group with respect to future events, and these future events may or may not actually occur. Such estimates and projections reflect various assumptions concerning anticipated results. While Meridian Capital Group believes these assumptions are reasonable, there can be no assurance that any of these estimates and projections will be correct. Therefore, actual results may vary materially from these estimates and projections. Any square footage dimensions set forth are approximate.

139 DUANE STREET

TRIBECA, NYC | Between Church Street and West Broadway

RESTAURANT FOR LEASE

FLOOR PLAN | BASEMENT



JAMES FAMULARO

President
646.658.7373
jfamularo@meridiancapital.com

JACOB MAYER

Director
212.468.5926
jmayer@meridiancapital.com

MARCELO DEMORAES

Associate
212.468.5904
mdemoraes@meridiancapital.com



MERIDIAN
RETAIL LEASING

All information supplied is from sources deemed reliable and is furnished subject to errors, omissions, modifications, removal of the listing from sale or lease, and to any listing conditions, including the rates and manner of payment of commissions for particular offerings imposed by Meridian Capital Group. This information may include estimates and projections prepared by Meridian Capital Group with respect to future events, and these future events may or may not actually occur. Such estimates and projections reflect various assumptions concerning anticipated results. While Meridian Capital Group believes these assumptions are reasonable, there can be no assurance that any of these estimates and projections will be correct. Therefore, actual results may vary materially from these estimates and projections. Any square footage dimensions set forth are approximate.

139 DUANE STREET

TRIBECA, NYC | Between Church Street and West Broadway

RESTAURANT FOR LEASE



NEIGHBORS

JAMES FAMULARO

President
646.658.7373
jfamularo@meridiancapital.com

JACOB MAYER

Director
212.468.5926
jmayer@meridiancapital.com

MARCELO DEMORAES

Associate
212.468.5904
mdemoraes@meridiancapital.com



MERIDIAN
RETAIL LEASING

All information supplied is from sources deemed reliable and is furnished subject to errors, omissions, modifications, removal of the listing from sale or lease, and to any listing conditions, including the rates and manner of payment of commissions for particular offerings imposed by Meridian Capital Group. This information may include estimates and projections prepared by Meridian Capital Group with respect to future events, and these future events may or may not actually occur. Such estimates and projections reflect various assumptions concerning anticipated results. While Meridian Capital Group believes these assumptions are reasonable, there can be no assurance that any of these estimates and projections will be correct. Therefore, actual results may vary materially from these estimates and projections. Any square footage dimensions set forth are approximate.