

960

MANHATTAN AVENUE GREENPOINT, BROOKLYN

Between India & Java Streets

OFFICE FOR LEASE

APPROXIMATE SIZE

2nd Floor: 4,000 SF

3rd Floor: 4,000 SF

ASKING RENT

2nd Floor: \$35 PSF

3rd Floor: \$35 PSF

POSSESSION

Immediate

TERM

Negotiable

COMMENTS

- High ceilings and large windows providing abundant light
- Direct access to each floor via elevator
- ADA compliant
- Kitchenette in place with gas
- Facade with modern finishes
- Prime location in close proximity to transportation

NEIGHBORS

Laundry Bee • Little Tiffin • Early Coffee & Sandwich
• Nassau Nail Spa • C Town Market • Aesthetic
Dental • Chiko • Radio Bakery • Mario's Pizza

TRANSPORTATION



2ND FLOOR MATTERPORT

3RD FLOOR MATTERPORT

NOAM AZIZ

Director
212.468.5984
naziz@meridiancapital.com

STEPHEN LIGAMBI

Senior Associate
212.468.5985
sligambi@meridiancapital.com

SHAYA KATZ

Associate
212.468.5991
shaya.katz@meridiancapital.com

AARON HAROUNIAN

Associate
212.468.5957
aharounian@meridiancapital.com



MERIDIAN
RETAIL LEASING

All information supplied is from sources deemed reliable and is furnished subject to errors, omissions, modifications, removal of the listing from sale or lease, and to any listing conditions, including the rates and manner of payment of commissions for particular offerings imposed by Meridian Capital Group. This information may include estimates and projections prepared by Meridian Capital Group with respect to future events, and these future events may or may not actually occur. Such estimates and projections reflect various assumptions concerning anticipated results. While Meridian Capital Group believes these assumptions are reasonable, there can be no assurance that any of these estimates and projections will be correct. Therefore, actual results may vary materially from these estimates and projections. Any square footage dimensions set forth are approximate.



INTERIOR

NOAM AZIZ

Director
212.468.5984
naziz@meridiancapital.com

STEPHEN LIGAMBI

Senior Associate
212.468.5985
sligambi@meridiancapital.com

SHAYA KATZ

Associate
212.468.5991
shaya.katz@meridiancapital.com

AARON HAROUNIAN

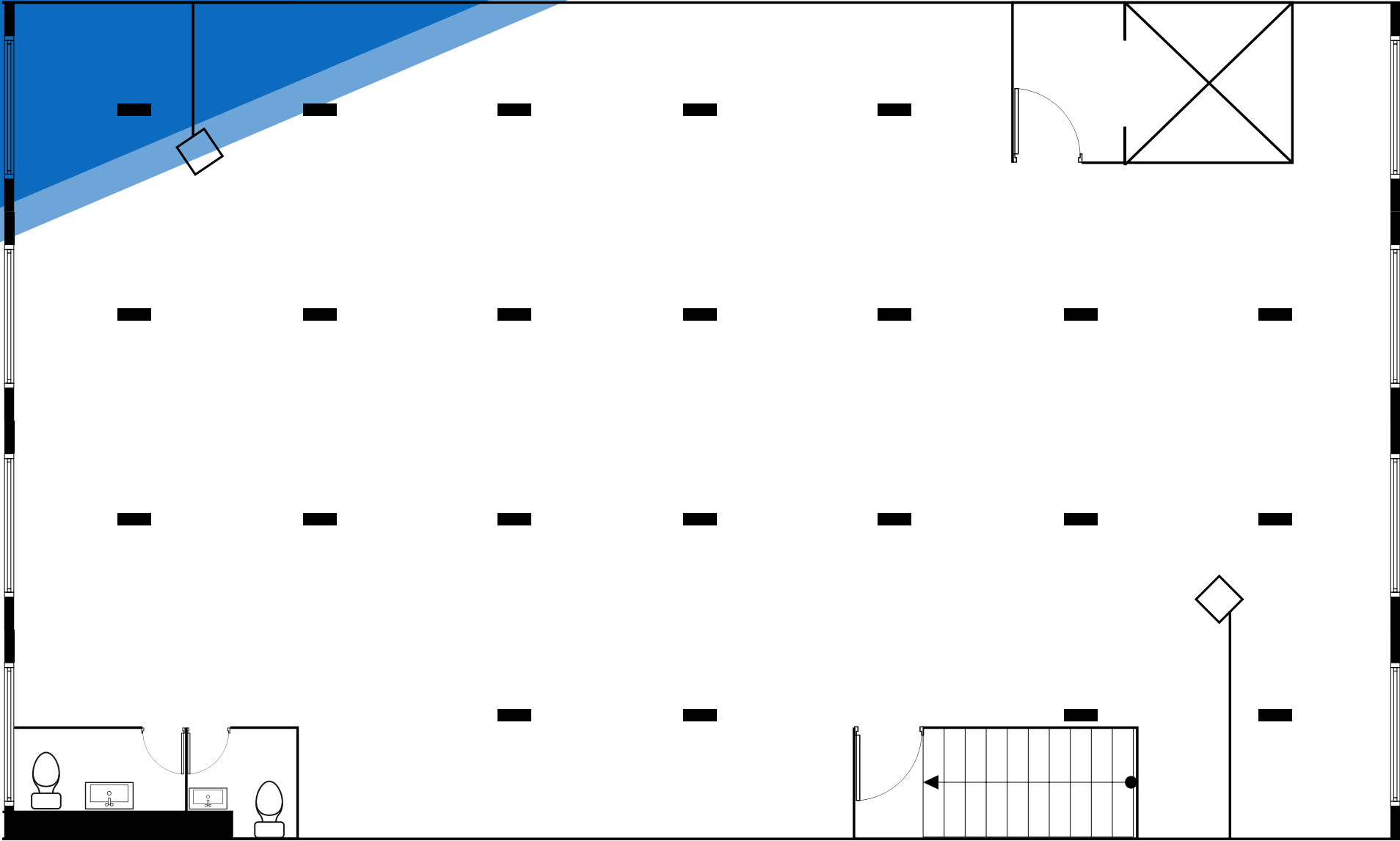
Associate
212.468.5957
aharounian@meridiancapital.com



960 MANHATTAN AVENUE
GREENPOINT, BROOKLYN | Between India & Java Streets

OFFICE FOR LEASE

FLOOR PLAN



NOAM AZIZ
Director
212.468.5984
naziz@meridiancapital.com

STEPHEN LIGAMBI
Senior Associate
212.468.5985
sligambi@meridiancapital.com

SHAYA KATZ
Associate
212.468.5991
shaya.katz@meridiancapital.com

AARON HAROUNIAN
Associate
212.468.5957
aharounian@meridiancapital.com



All information supplied is from sources deemed reliable and is furnished subject to errors, omissions, modifications, removal of the listing from sale or lease, and to any listing conditions, including the rates and manner of payment of commissions for particular offerings imposed by Meridian Capital Group. This information may include estimates and projections prepared by Meridian Capital Group with respect to future events, and these future events may or may not actually occur. Such estimates and projections reflect various assumptions concerning anticipated results. While Meridian Capital Group believes these assumptions are reasonable, there can be no assurance that any of these estimates and projections will be correct. Therefore, actual results may vary materially from these estimates and projections. Any square footage dimensions set forth are approximate.

960 MANHATTAN AVENUE

GREENPOINT, BROOKLYN | Between India & Java Streets

OFFICE FOR LEASE

NEIGHBORS



NOAM AZIZ

Director
212.468.5984
naziz@meridiancapital.com

STEPHEN LIGAMBI

Senior Associate
212.468.5985
sligambi@meridiancapital.com

SHAYA KATZ

Associate
212.468.5991
shaya.katz@meridiancapital.com

AARON HAROUNIAN

Associate
212.468.5957
aharounian@meridiancapital.com



All information supplied is from sources deemed reliable and is furnished subject to errors, omissions, modifications, removal of the listing from sale or lease, and to any listing conditions, including the rates and manner of payment of commissions for particular offerings imposed by Meridian Capital Group. This information may include estimates and projections prepared by Meridian Capital Group with respect to future events, and these future events may or may not actually occur. Such estimates and projections reflect various assumptions concerning anticipated results. While Meridian Capital Group believes these assumptions are reasonable, there can be no assurance that any of these estimates and projections will be correct. Therefore, actual results may vary materially from these estimates and projections. Any square footage dimensions set forth are approximate.