

7127

KEYSTONE STREET PHILADELPHIA, PENNSYLVANIA

Between Princeton & Cottman Avenues

RETAIL FOR LEASE

APPROXIMATE SIZE

10,000 SF

ASKING RENT

Upon Request

POSSESSION

Immediate

TERM

Negotiable

FRONTAGE

100 FT

COMMENTS

- Raw space at the base of a 96-unit brand-new residential building
- Right off I-95
- All uses considered

NEIGHBORS

The Keys • Muse Studio • Excel Plumbing Heating & Air • Bombshell Hair Studio • Evolution Auto Haus • Pizza Time • Jack's Place • New Neighbor Food Market • Hope Hall • Sunoco

TRANSPORTATION



ADAM MATLOFF

Senior Director
212.468.5924
amatloff@meridiancapital.com

NATHANIEL ABITBOL

Senior Associate
212.468.5949
nabitbol@meridiancapital.com

JAKE HERSKOWITZ

Associate
212.468.5941
jherskowitz@meridiancapital.com



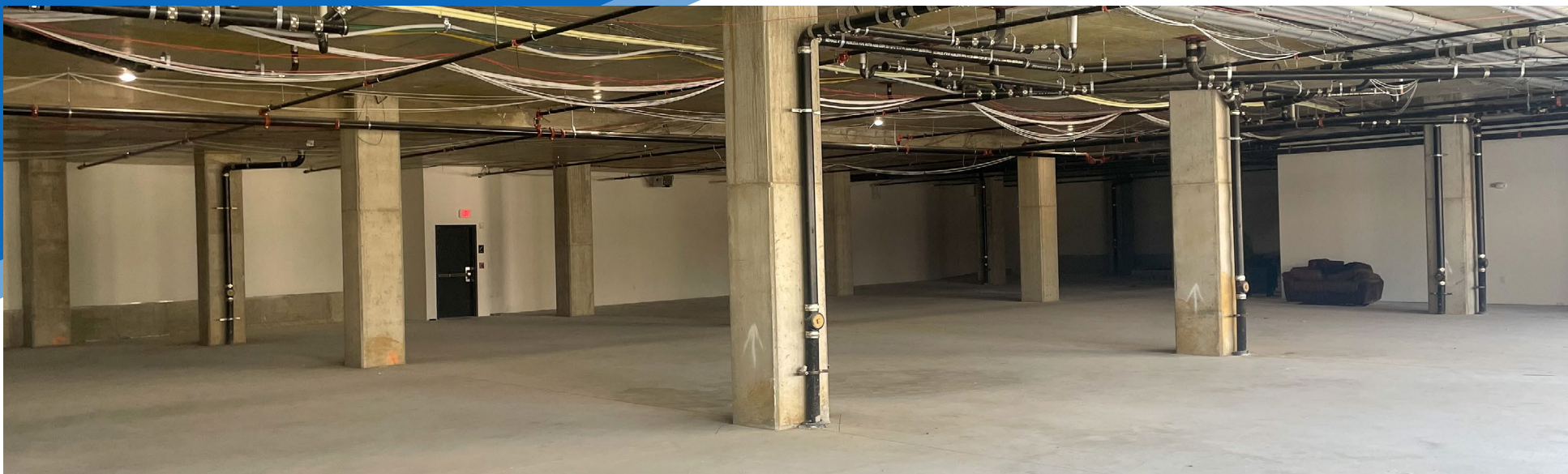
MERIDIAN
RETAIL LEASING

All information supplied is from sources deemed reliable and is furnished subject to errors, omissions, modifications, removal of the listing from sale or lease, and to any listing conditions, including the rates and manner of payment of commissions for particular offerings imposed by Meridian Capital Group. This information may include estimates and projections prepared by Meridian Capital Group with respect to future events, and these future events may or may not actually occur. Such estimates and projections reflect various assumptions concerning anticipated results. While Meridian Capital Group believes these assumptions are reasonable, there can be no assurance that any of these estimates and projections will be correct. Therefore, actual results may vary materially from these estimates and projections. Any square footage dimensions set forth are approximate.

7127 KEYSTONE STREET

PHILADELPHIA, PENNSYLVANIA | Between Princeton and Cottman Avenues

RETAIL FOR LEASE



INTERIOR

ADAM MATLOFF

Senior Director
212.468.5924
amatloff@meridiancapital.com

NATHANIEL ABITBOL

Senior Associate
212.468.5949
nabitbol@meridiancapital.com

JAKE HERSKOWITZ

Associate
212.468.5941
jherskowitz@meridiancapital.com



MERIDIAN
RETAIL LEASING

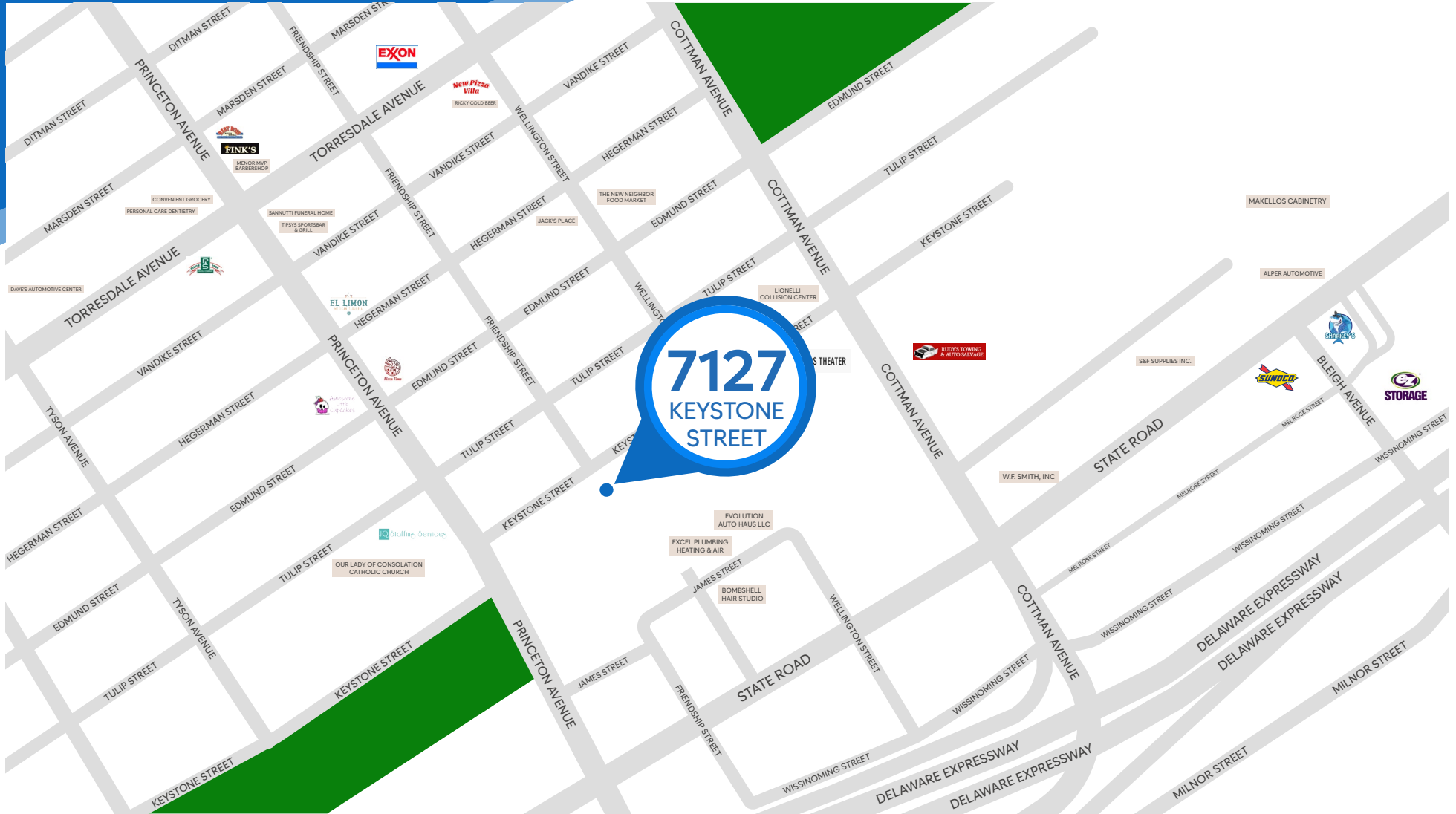
All information supplied is from sources deemed reliable and is furnished subject to errors, omissions, modifications, removal of the listing from sale or lease, and to any listing conditions, including the rates and manner of payment of commissions for particular offerings imposed by Meridian Capital Group. This information may include estimates and projections prepared by Meridian Capital Group with respect to future events, and these future events may or may not actually occur. Such estimates and projections reflect various assumptions concerning anticipated results. While Meridian Capital Group believes these assumptions are reasonable, there can be no assurance that any of these estimates and projections will be correct. Therefore, actual results may vary materially from these estimates and projections. Any square footage dimensions set forth are approximate.

7127 KEYSTONE STREET

PHILADELPHIA, PENNSYLVANIA | Between Princeton and Cottman Avenues

RETAIL FOR LEASE

NEIGHBORS



ADAM MATLOFF

Senior Director
212.468.5924
amatloff@meridiancapital.com

NATHANIEL ABITBOL

Senior Associate
212.468.5949
nabitbol@meridiancapital.com

JAKE HERSKOWITZ

Associate
212.468.5941
jherskowitz@meridiancapital.com



MERIDIAN
RETAIL LEASING

All information supplied is from sources deemed reliable and is furnished subject to errors, omissions, modifications, removal of the listing from sale or lease, and to any listing conditions, including the rates and manner of payment of commissions for particular offerings imposed by Meridian Capital Group. This information may include estimates and projections prepared by Meridian Capital Group with respect to future events, and these future events may or may not actually occur. Such estimates and projections reflect various assumptions concerning anticipated results. While Meridian Capital Group believes these assumptions are reasonable, there can be no assurance that any of these estimates and projections will be correct. Therefore, actual results may vary materially from these estimates and projections. Any square footage dimensions set forth are approximate.