

701

WEST 135TH STREET HARLEM, NYC

Corner of 135th Street & Twelfth Avenue

RETAIL FOR LEASE

APPROXIMATE SIZE

Ground Floor: 6,806 SF
2nd Floor: 7,302 SF
3rd Floor: 2,200 SF
Total: 16,308 SF

ASKING RENT

Ground Floor: \$60 PSF
2nd-3rd Floor: \$30 PSF

POSSESSION

Immediate

TERM

10-15 Years

FRONTAGE

400 FT Wraparound

COMMENTS

- Rare opportunity in Harlem's Development Pipeline
- Prominent corner lot with 400 ft of wraparound frontage
- Previously home to "Phuket" bar and lounge, "Trattoria" Italian Restaurant, and "Suite 135" gentleman's club

NEIGHBORS

Total Wireless • Bus Stop Diner • Dunkin' Donuts • Manhattan Mini Storage • FW WEbb • Skinny's Cantina on the Hudson • The Westbourne NYC • Duane Reade • La Flor de Broadway

TRANSPORTATION

1 3

JAMES FAMULARO

President
646.658.7373
jfamularo@meridiancapital.com

BOBBY ORTENSE

Director
212.468.5953
bortense@meridiancapital.com

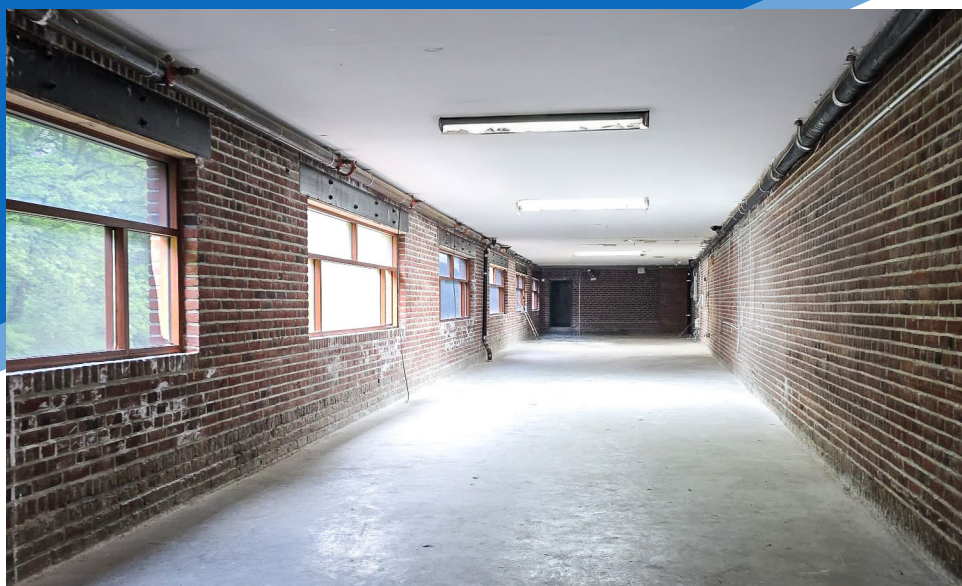
COLE KLEPPINGER

Associate
212.468.5993
ckleppinger@meridiancapital.com



MERIDIAN
RETAIL LEASING

All information supplied is from sources deemed reliable and is furnished subject to errors, omissions, modifications, removal of the listing from sale or lease, and to any listing conditions, including the rates and manner of payment of commissions for particular offerings imposed by Meridian Capital Group. This information may include estimates and projections prepared by Meridian Capital Group with respect to future events, and these future events may or may not actually occur. Such estimates and projections reflect various assumptions concerning anticipated results. While Meridian Capital Group believes these assumptions are reasonable, there can be no assurance that any of these estimates and projections will be correct. Therefore, actual results may vary materially from these estimates and projections. Any square footage dimensions set forth are approximate.



INTERIOR

JAMES FAMULARO

President
646.658.7373
jfamularo@meridiancapital.com

BOBBY ORTENSE

Director
212.468.5953
bortense@meridiancapital.com

COLE KLEPPINGER

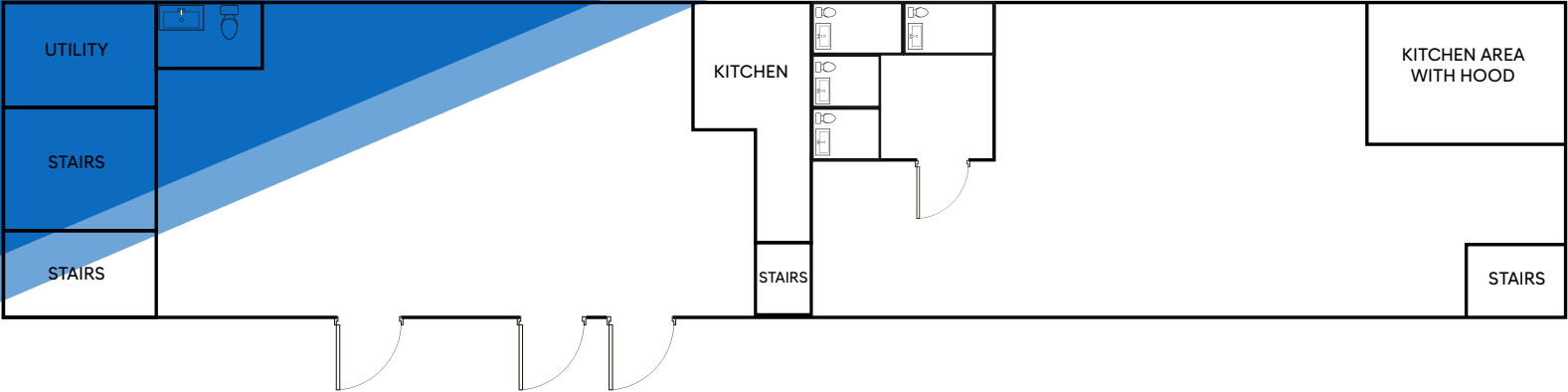
Associate
212.468.5993
ckleppinger@meridiancapital.com



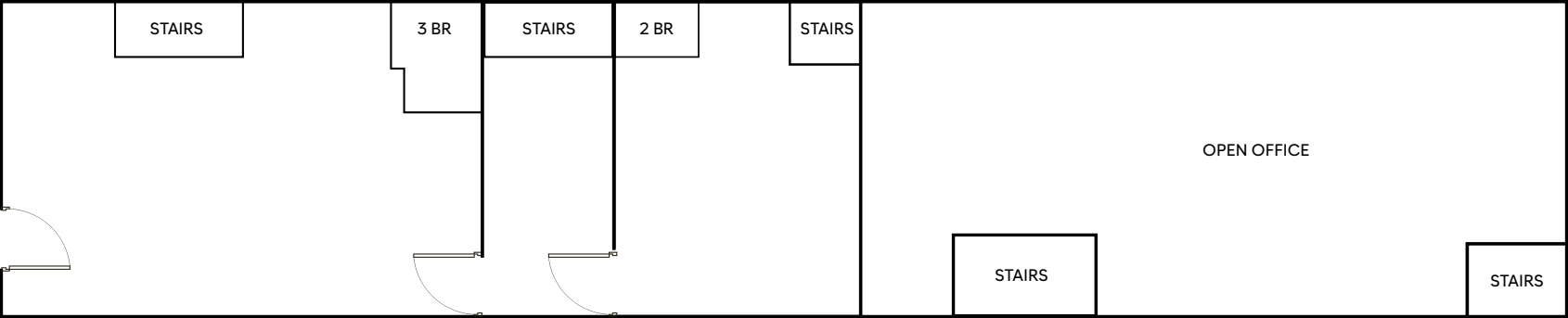
MERIDIAN
RETAIL LEASING

701 WEST 135TH STREET
HARLEM, NYC | Corner of 135th Street and Twelfth Avenue

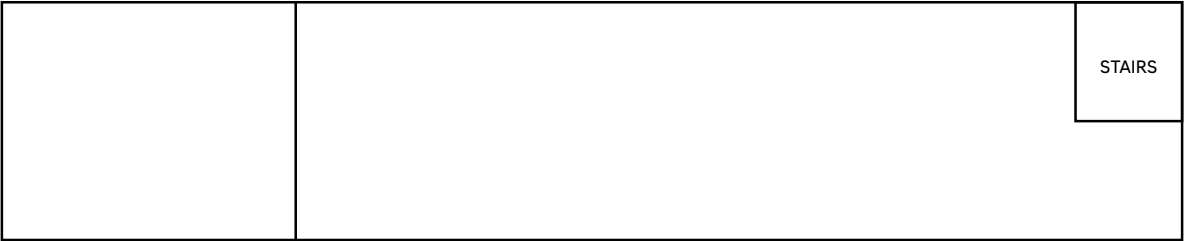
RETAIL FOR LEASE



GROUND FLOOR



2ND FLOOR



ROOFTOP

THIRD FLOOR

FLOOR PLANS

JAMES FAMULARO
President
646.658.7373
jfamularo@meridiancapital.com

BOBBY ORTENSE
Director
212.468.5953
bortense@meridiancapital.com

COLE KLEPPINGER
Associate
212.468.5993
ckleppinger@meridiancapital.com



MERIDIAN
RETAIL LEASING

All information supplied is from sources deemed reliable and is furnished subject to errors, omissions, modifications, removal of the listing from sale or lease, and to any listing conditions, including the rates and manner of payment of commissions for particular offerings imposed by Meridian Capital Group. This information may include estimates and projections prepared by Meridian Capital Group with respect to future events, and these future events may or may not actually occur. Such estimates and projections reflect various assumptions concerning anticipated results. While Meridian Capital Group believes these assumptions are reasonable, there can be no assurance that any of these estimates and projections will be correct. Therefore, actual results may vary materially from these estimates and projections. Any square footage dimensions set forth are approximate.

701 WEST 135TH STREET

HARLEM, NYC | Corner of 135th Street and Twelfth Avenue

RETAIL FOR LEASE

NEIGHBORS



JAMES FAMULARO

President
646.658.7373
jfamularo@meridiancapital.com

BOBBY ORTENSE

Director
212.468.5953
bortense@meridiancapital.com

COLE KLEPPINGER

Associate
212.468.5993
ckleppinger@meridiancapital.com



MERIDIAN
RETAIL LEASING

All information supplied is from sources deemed reliable and is furnished subject to errors, omissions, modifications, removal of the listing from sale or lease, and to any listing conditions, including the rates and manner of payment of commissions for particular offerings imposed by Meridian Capital Group. This information may include estimates and projections prepared by Meridian Capital Group with respect to future events, and these future events may or may not actually occur. Such estimates and projections reflect various assumptions concerning anticipated results. While Meridian Capital Group believes these assumptions are reasonable, there can be no assurance that any of these estimates and projections will be correct. Therefore, actual results may vary materially from these estimates and projections. Any square footage dimensions set forth are approximate.