

58

SECOND AVENUE EAST VILLAGE, NYC

Between East 3rd & 4th Streets

RESTAURANT FOR LEASE

APPROXIMATE SIZE

Ground Floor: 2,000 SF
Basement: 650 SF

ASKING RENT

~~\$18,995/Month~~ Reduced
\$17,500/Month

POSSESSION

Immediate

TERM

Flexible

FRONTAGE

20 FT

COMMENTS

- Previously "Dia Wine Bar"
- Electric kitchen in place
- Beer and wine license
- Brand-new HVAC, flooring, lighting, and bathrooms
- Abundant natural light

NEIGHBORS

Bar Verde • Gemma • The Wren • Cooper's Craft
+ Cocktails • Jean's • Barry's • La Colombe •
Van Leeuwen • San Marzano • Paradise Lost

TRANSPORTATION

4 5 6 L



GREG GOLDBERG

Senior Director
646.780.4904
ggoldberg@meridiancapital.com

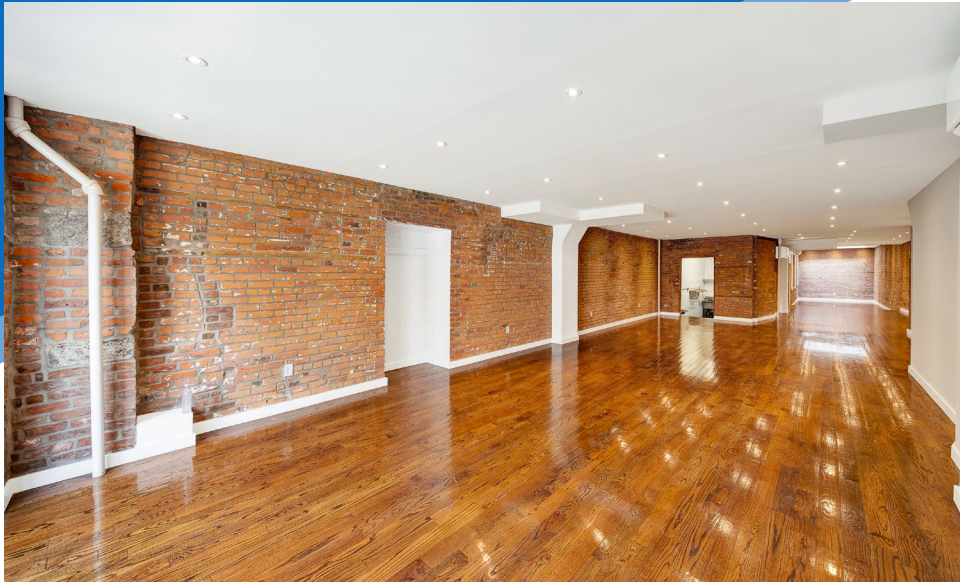


MERIDIAN
RETAIL LEASING

All information supplied is from sources deemed reliable and is furnished subject to errors, omissions, modifications, removal of the listing from sale or lease, and to any listing conditions, including the rates and manner of payment of commissions for particular offerings imposed by Meridian Capital Group. This information may include estimates and projections prepared by Meridian Capital Group with respect to future events, and these future events may or may not actually occur. Such estimates and projections reflect various assumptions concerning anticipated results. While Meridian Capital Group believes these assumptions are reasonable, there can be no assurance that any of these estimates and projections will be correct. Therefore, actual results may vary materially from these estimates and projections. Any square footage dimensions set forth are approximate.

58 SECOND AVENUE
EAST VILLAGE, NYC | Between East 3rd & 4th Streets

RESTAURANT FOR LEASE



INTERIOR

GREG GOLDBERG

Senior Director

646.780.4904

ggoldberg@meridiancapital.com

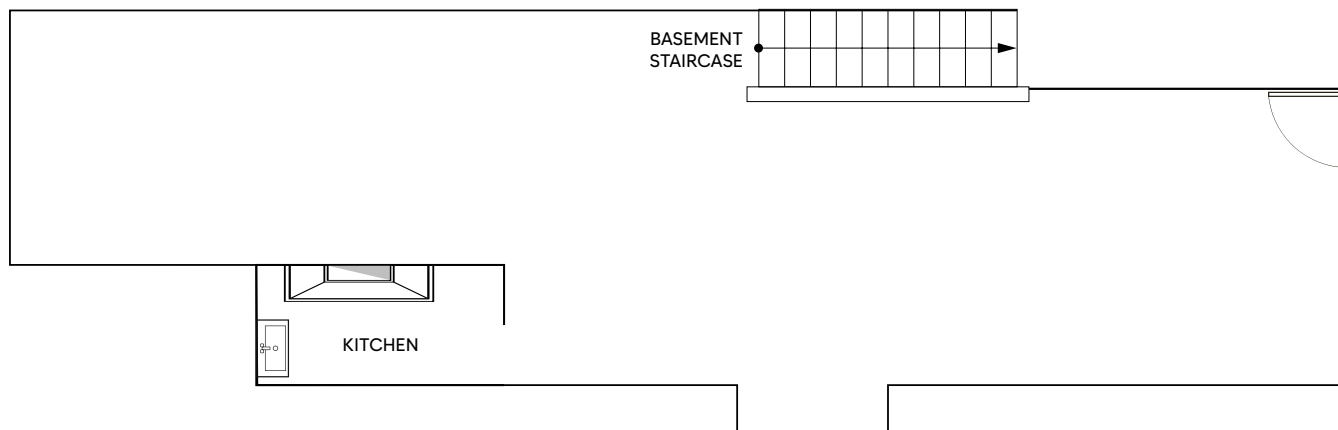


MERIDIAN
RETAIL LEASING

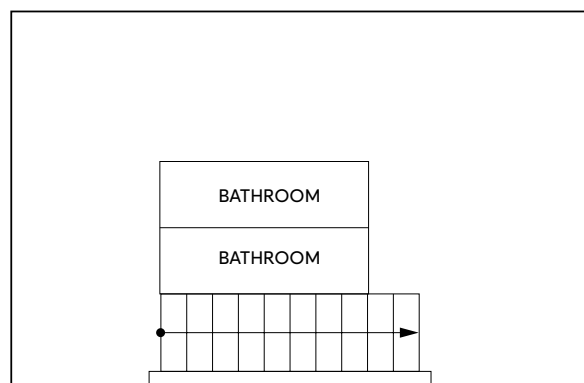
All information supplied is from sources deemed reliable and is furnished subject to errors, omissions, modifications, removal of the listing from sale or lease, and to any listing conditions, including the rates and manner of payment of commissions for particular offerings imposed by Meridian Capital Group. This information may include estimates and projections prepared by Meridian Capital Group with respect to future events, and these future events may or may not actually occur. Such estimates and projections reflect various assumptions concerning anticipated results. While Meridian Capital Group believes these assumptions are reasonable, there can be no assurance that any of these estimates and projections will be correct. Therefore, actual results may vary materially from these estimates and projections. Any square footage dimensions set forth are approximate.

58 SECOND AVENUE
EAST VILLAGE, NYC | Between East 3rd & 4th Streets

RESTAURANT FOR LEASE



GROUND FLOOR



BASEMENT

FLOOR PLANS

GREG GOLDBERG

Senior Director
646.780.4904

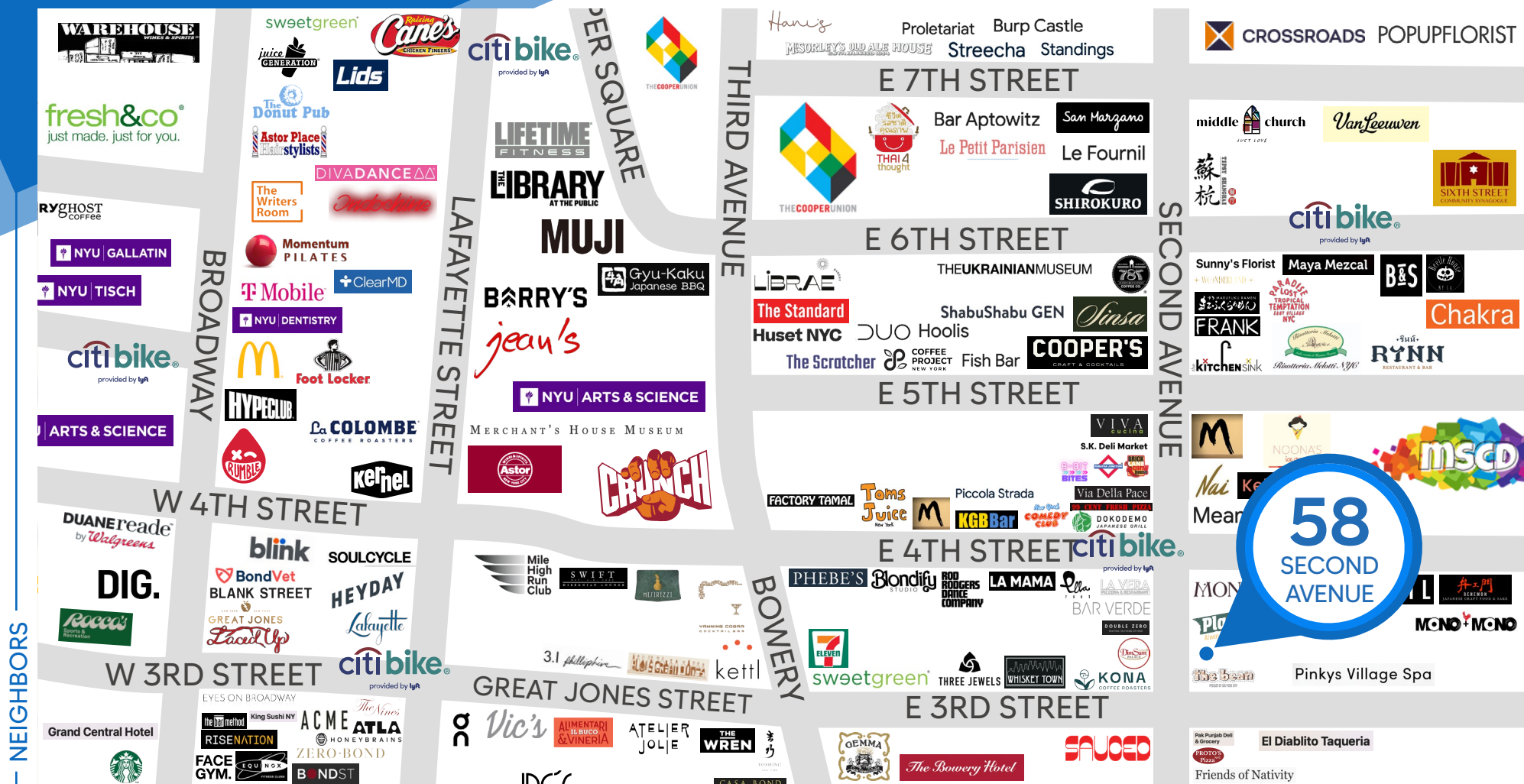
ggoldberg@meridiancapital.com



MERIDIAN
RETAIL LEASING

All information supplied is from sources deemed reliable and is furnished subject to errors, omissions, modifications, removal of the listing from sale or lease, and to any listing conditions, including the rates and manner of payment of commissions for particular offerings imposed by Meridian Capital Group. This information may include estimates and projections prepared by Meridian Capital Group with respect to future events, and these future events may or may not actually occur. Such estimates and projections reflect various assumptions concerning anticipated results. While Meridian Capital Group believes these assumptions are reasonable, there can be no assurance that any of these estimates and projections will be correct. Therefore, actual results may vary materially from these estimates and projections. Any square footage dimensions set forth are approximate.

RESTAURANT FOR LEASE



Senior Director
646.780.4904
ggoldberg@meridiancapital.com



MERIDIAN RETAIL LEASING

All information supplied is from sources deemed reliable and is furnished subject to errors, omissions, modifications, removal of the listing from sale or lease, and to any listing conditions, including the rates and manner of payment of commissions for particular offerings imposed by Meridian Capital Group. This information may include estimates and projections prepared by Meridian Capital Group with respect to future events, and these future events may or may not actually occur. Such estimates and projections reflect various assumptions concerning anticipated results. While Meridian Capital Group believes these assumptions are reasonable, there can be no assurance that any of these estimates and projections will be correct. Therefore, actual results may vary materially from these estimates and projections. Any square footage dimensions set forth are approximate.