

# 511

WEST 20<sup>TH</sup> STREET  
CHELSEA, NYC

Between Tenth & Eleventh Avenues

RETAIL FOR LEASE

#### APPROXIMATE SIZE

Ground Floor: 1,500 SF

#### ASKING RENT

\$12,000/Month

#### POSSESSION

Immediate

#### TERM

10+ Years

#### FRONTAGE

10 FT

#### COMMENTS

- Beautifully built retail space in pristine condition
- Ideal for gallery, showroom, boutique fitness, wellness, or medical
- Tenant-controlled heating/cooling
- Located at the base of West 20<sup>th</sup> Street Highline entrance

#### NEIGHBORS

Cookshop • The Highline Hotel • David Zwirner • Pepe Giallo • Urbana Café and Gallery • Bruce Silberstein Gallery • Paula Cooper Gallery • Cucina Alba • Praxis Gallery • 303 Gallery • IAC Building • Jack Shainman Gallery • Bathtub Gin

#### TRANSPORTATION



#### GARRETT KELLY

Director  
212.468.5939  
gkelly@meridiancapital.com

#### NOAM AZIZ

Director  
212.468.5984  
naziz@meridiancapital.com

#### MAX FREUDENBERGER

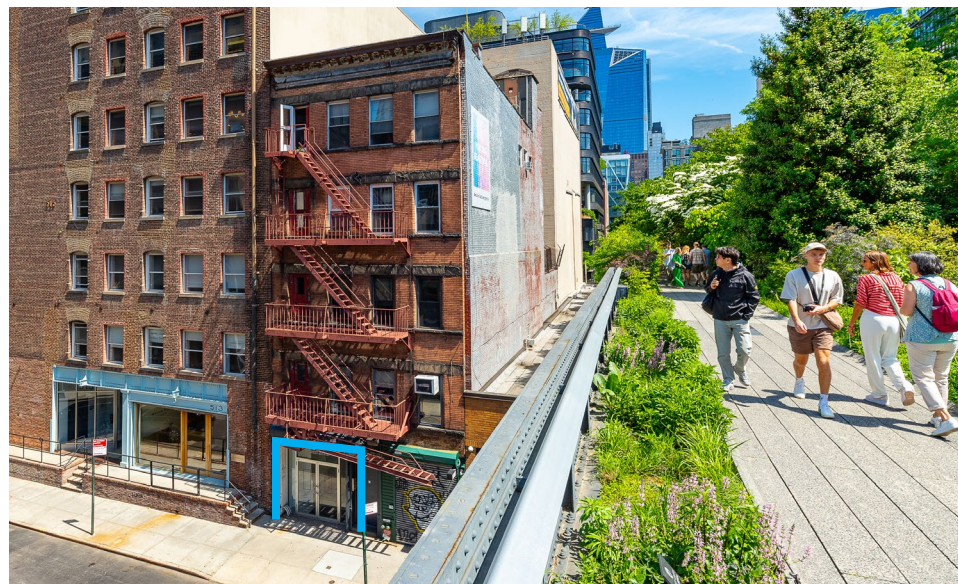
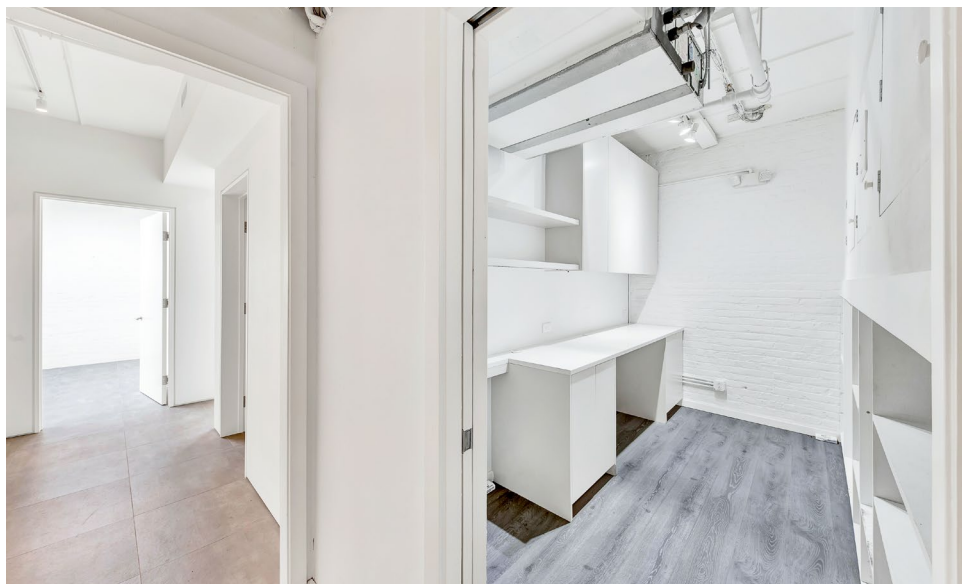
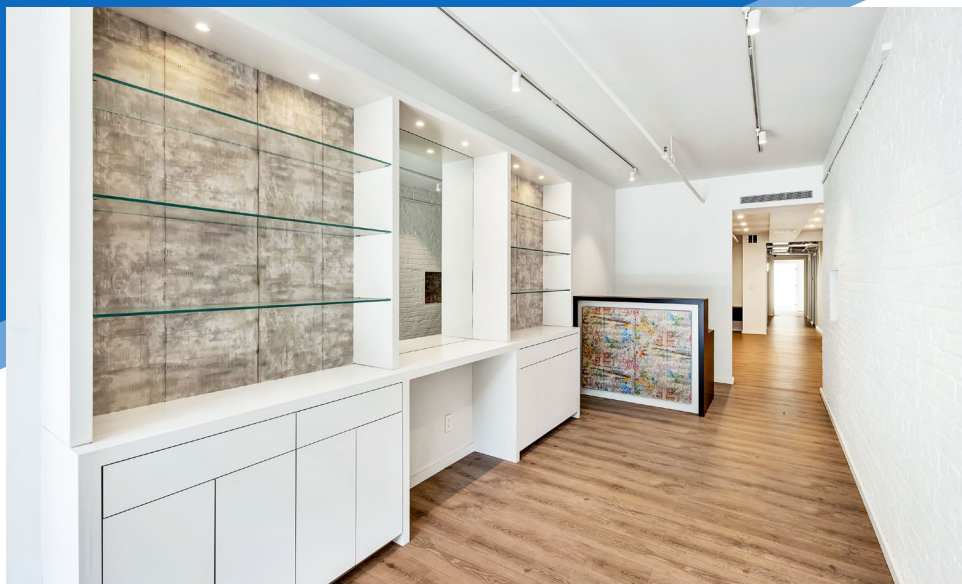
Associate  
212.468.5951  
mfreudenberg@meridiancapital.com



**MERIDIAN**  
RETAIL LEASING

All information supplied is from sources deemed reliable and is furnished subject to errors, omissions, modifications, removal of the listing from sale or lease, and to any listing conditions, including the rates and manner of payment of commissions for particular offerings imposed by Meridian Capital Group. This information may include estimates and projections prepared by Meridian Capital Group with respect to future events, and these future events may or may not actually occur. Such estimates and projections reflect various assumptions concerning anticipated results. While Meridian Capital Group believes these assumptions are reasonable, there can be no assurance that any of these estimates and projections will be correct. Therefore, actual results may vary materially from these estimates and projections. Any square footage dimensions set forth are approximate.





INTERIOR

GARRETT KELLY

Director  
212.468.5939  
gkelly@meridiancapital.com

NOAM AZIZ

Director  
212.468.5984  
naziz@meridiancapital.com

MAX FREUDENBERGER

Associate  
212.468.5951  
mfreudenberg@meridiancapital.com

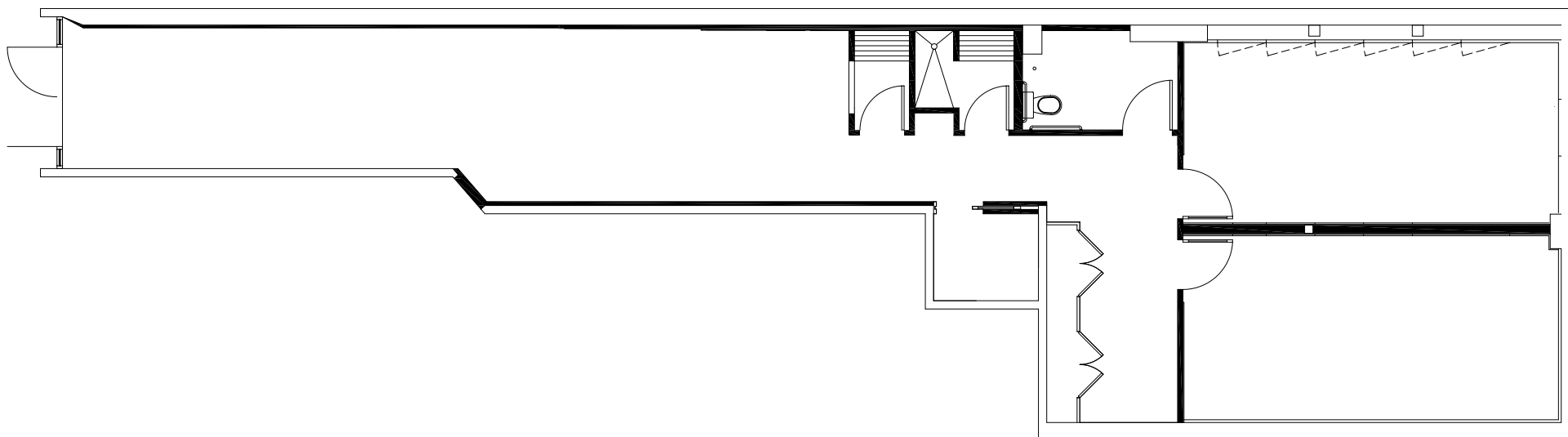


**MERIDIAN**  
RETAIL LEASING

511 WEST 20<sup>TH</sup> STREET  
CHELSEA, NYC | Between Tenth and Eleventh Avenues

RETAIL FOR LEASE

FLOOR PLAN



GARRETT KELLY

Director  
212.468.5939  
gkelly@meridiancapital.com

NOAM AZIZ

Director  
212.468.5984  
naziz@meridiancapital.com

MAX FREUDENBERGER

Associate  
212.468.5951  
mfreudenberg@meridiancapital.com



**MERIDIAN**  
RETAIL LEASING

All information supplied is from sources deemed reliable and is furnished subject to errors, omissions, modifications, removal of the listing from sale or lease, and to any listing conditions, including the rates and manner of payment of commissions for particular offerings imposed by Meridian Capital Group. This information may include estimates and projections prepared by Meridian Capital Group with respect to future events, and these future events may or may not actually occur. Such estimates and projections reflect various assumptions concerning anticipated results. While Meridian Capital Group believes these assumptions are reasonable, there can be no assurance that any of these estimates and projections will be correct. Therefore, actual results may vary materially from these estimates and projections. Any square footage dimensions set forth are approximate.



# 511 WEST 20<sup>TH</sup> STREET

CHELSEA, NYC | Between Tenth and Eleventh Avenues

RETAIL FOR LEASE



NEIGHBORS

## GARRETT KELLY

Director  
212.468.5939  
gkelly@meridiancapital.com

## NOAM AZIZ

Director  
212.468.5984  
naziz@meridiancapital.com

## MAX FREUDENBERGER

Associate  
212.468.5951  
mfreudenberg@meridiancapital.com



**MERIDIAN**  
RETAIL LEASING

All information supplied is from sources deemed reliable and is furnished subject to errors, omissions, modifications, removal of the listing from sale or lease, and to any listing conditions, including the rates and manner of payment of commissions for particular offerings imposed by Meridian Capital Group. This information may include estimates and projections prepared by Meridian Capital Group with respect to future events, and these future events may or may not actually occur. Such estimates and projections reflect various assumptions concerning anticipated results. While Meridian Capital Group believes these assumptions are reasonable, there can be no assurance that any of these estimates and projections will be correct. Therefore, actual results may vary materially from these estimates and projections. Any square footage dimensions set forth are approximate.