

# 47

## WEST 28<sup>TH</sup> STREET NOMAD, NYC

Between Broadway & Sixth Avenue

RETAIL FOR LEASE

### APPROXIMATE SIZE

3<sup>rd</sup> Floor: 1,500 SF

### ASKING RENT

\$6,500/Month

### POSSESSION

Immediate

### TERM

10-15 Years

### COMMENTS

- Studio space located on historic Tin Pan Alley
- Large windows that open up to 28th Street
- Additional sunken studio in the back of the space

### NEIGHBORS

Barn Joo Nomad • Bluesky New York • The Ritz Carlton • Venchi • L'Adresse • Black Seed Bagels • 230 Fifth Rooftop • Oscar Wilde • Patent Pending • The Ned Nomad • Equinox • Moxy

### TRANSPORTATION



PROPERTY INFORMATION

### JAMES FAMULARO

President  
646.658.7373  
jfamularo@meridiancapital.com

### JACOB MAYER

Director  
212.468.5926  
jmayer@meridiancapital.com

### DAVID SIMHON

Associate  
212.468.5947  
dsimhon@meridiancapital.com



**MERIDIAN**  
RETAIL LEASING

All information supplied is from sources deemed reliable and is furnished subject to errors, omissions, modifications, removal of the listing from sale or lease, and to any listing conditions, including the rates and manner of payment of commissions for particular offerings imposed by Meridian Capital Group. This information may include estimates and projections prepared by Meridian Capital Group with respect to future events, and these future events may or may not actually occur. Such estimates and projections reflect various assumptions concerning anticipated results. While Meridian Capital Group believes these assumptions are reasonable, there can be no assurance that any of these estimates and projections will be correct. Therefore, actual results may vary materially from these estimates and projections. Any square footage dimensions set forth are approximate.

# 47 WEST 28<sup>TH</sup> STREET

NOMAD, NYC | Between Broadway and Sixth Avenue

RETAIL FOR LEASE



INTERIOR

## JAMES FAMULARO

President  
646.658.7373  
jfamularo@meridiancapital.com

## JACOB MAYER

Director  
212.468.5926  
jmayer@meridiancapital.com

## DAVID SIMHON

Associate  
212.468.5947  
dsimhon@meridiancapital.com



**MERIDIAN**  
RETAIL LEASING

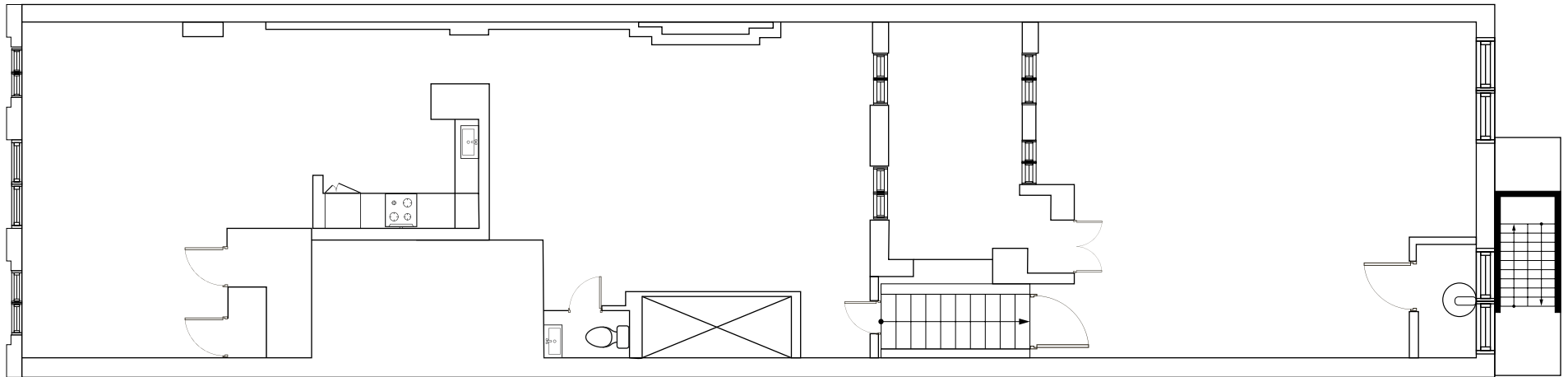
All information supplied is from sources deemed reliable and is furnished subject to errors, omissions, modifications, removal of the listing from sale or lease, and to any listing conditions, including the rates and manner of payment of commissions for particular offerings imposed by Meridian Capital Group. This information may include estimates and projections prepared by Meridian Capital Group with respect to future events, and these future events may or may not actually occur. Such estimates and projections reflect various assumptions concerning anticipated results. While Meridian Capital Group believes these assumptions are reasonable, there can be no assurance that any of these estimates and projections will be correct. Therefore, actual results may vary materially from these estimates and projections. Any square footage dimensions set forth are approximate.

# 47 WEST 28<sup>TH</sup> STREET

NOMAD, NYC | Between Broadway and Sixth Avenue

RETAIL FOR LEASE

WEST 28TH STREET



FLOOR PLAN

## JAMES FAMULARO

President  
646.658.7373  
jfamularo@meridiancapital.com

## JACOB MAYER

Director  
212.468.5926  
jmayer@meridiancapital.com

## DAVID SIMHON

Associate  
212.468.5947  
dsimhon@meridiancapital.com



**MERIDIAN**  
RETAIL LEASING

All information supplied is from sources deemed reliable and is furnished subject to errors, omissions, modifications, removal of the listing from sale or lease, and to any listing conditions, including the rates and manner of payment of commissions for particular offerings imposed by Meridian Capital Group. This information may include estimates and projections prepared by Meridian Capital Group with respect to future events, and these future events may or may not actually occur. Such estimates and projections reflect various assumptions concerning anticipated results. While Meridian Capital Group believes these assumptions are reasonable, there can be no assurance that any of these estimates and projections will be correct. Therefore, actual results may vary materially from these estimates and projections. Any square footage dimensions set forth are approximate.

# 47 WEST 28<sup>TH</sup> STREET

NOMAD, NYC | Between Broadway and Sixth Avenue

RETAIL FOR LEASE



NEIGHBORS

### JAMES FAMULARO

President  
646.658.7373  
jfamularo@meridiancapital.com

### JACOB MAYER

Director  
212.468.5926  
jmayer@meridiancapital.com

### DAVID SIMHON

Associate  
212.468.5947  
dsimhon@meridiancapital.com



**MERIDIAN**  
RETAIL LEASING

All information supplied is from sources deemed reliable and is furnished subject to errors, omissions, modifications, removal of the listing from sale or lease, and to any listing conditions, including the rates and manner of payment of commissions for particular offerings imposed by Meridian Capital Group. This information may include estimates and projections prepared by Meridian Capital Group with respect to future events, and these future events may or may not actually occur. Such estimates and projections reflect various assumptions concerning anticipated results. While Meridian Capital Group believes these assumptions are reasonable, there can be no assurance that any of these estimates and projections will be correct. Therefore, actual results may vary materially from these estimates and projections. Any square footage dimensions set forth are approximate.