

45

EAST 34TH STREET MURRAY HILL, NYC

Between Park & Madison Avenues

RETAIL/OFFICE FOR LEASE

APPROXIMATE SIZE

3rd Floor: 2,300 SF

ASKING RENT

\$12,500/Month

POSSESSION

Immediate

TERM

10-15 Years

CEILING HEIGHTS

15 FT

COMMENTS

- Open layout 3rd floor space
- Landlord will deliver new windows and HVAC
- Flag/large signage opportunity
- 2 bathrooms, shower, and kitchenette in place
- Perfect for fitness, boutique office, or yoga

NEIGHBORS

The Ainsworth • New York Sports Club • Wolfgang's Steakhouse • Roche Bobois • Serafina • Sweegreen • Buttercup Bake Shop • Equinox • Tacombi • Zara • Lifetime Fitness • Paris Baguette

TRANSPORTATION



PROPERTY INFORMATION



JOHN ROESCH

Director
212.468.5971
jroesch@meridiancapital.com

MARIKO TANAKA

Associate
212.468.5955
mtanaka@meridiancapital.com



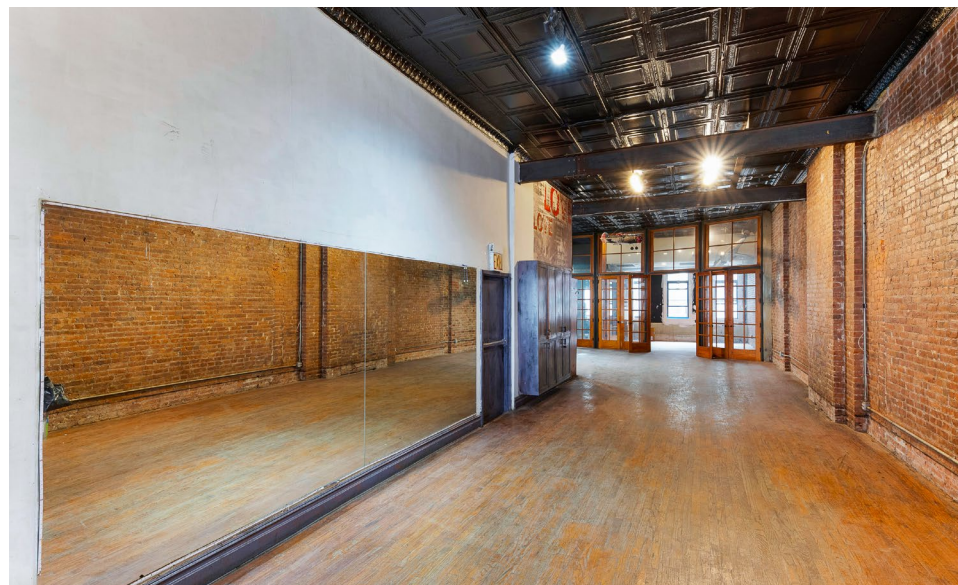
MERIDIAN
RETAIL LEASING

All information supplied is from sources deemed reliable and is furnished subject to errors, omissions, modifications, removal of the listing from sale or lease, and to any listing conditions, including the rates and manner of payment of commissions for particular offerings imposed by Meridian Capital Group. This information may include estimates and projections prepared by Meridian Capital Group with respect to future events, and these future events may or may not actually occur. Such estimates and projections reflect various assumptions concerning anticipated results. While Meridian Capital Group believes these assumptions are reasonable, there can be no assurance that any of these estimates and projections will be correct. Therefore, actual results may vary materially from these estimates and projections. Any square footage dimensions set forth are approximate.

45 EAST 34TH STREET

MURRAY HILL, NYC | Between Park and Madison Avenues

RETAIL/OFFICE FOR LEASE



INTERIOR

JOHN ROESCH

Director
212.468.5971
jroesch@meridiancapital.com

MARIKO TANAKA

Associate
212.468.5955
mtanaka@meridiancapital.com



MERIDIAN
RETAIL LEASING

All information supplied is from sources deemed reliable and is furnished subject to errors, omissions, modifications, removal of the listing from sale or lease, and to any listing conditions, including the rates and manner of payment of commissions for particular offerings imposed by Meridian Capital Group. This information may include estimates and projections prepared by Meridian Capital Group with respect to future events, and these future events may or may not actually occur. Such estimates and projections reflect various assumptions concerning anticipated results. While Meridian Capital Group believes these assumptions are reasonable, there can be no assurance that any of these estimates and projections will be correct. Therefore, actual results may vary materially from these estimates and projections. Any square footage dimensions set forth are approximate.

45 EAST 34TH STREET

MURRAY HILL, NYC | Between Park and Madison Avenues

RETAIL/OFFICE FOR LEASE

FLOOR PLAN



JOHN ROESCH

Director
212.468.5971
jroesch@meridiancapital.com

MARIKO TANAKA

Associate
212.468.5955
mtanaka@meridiancapital.com



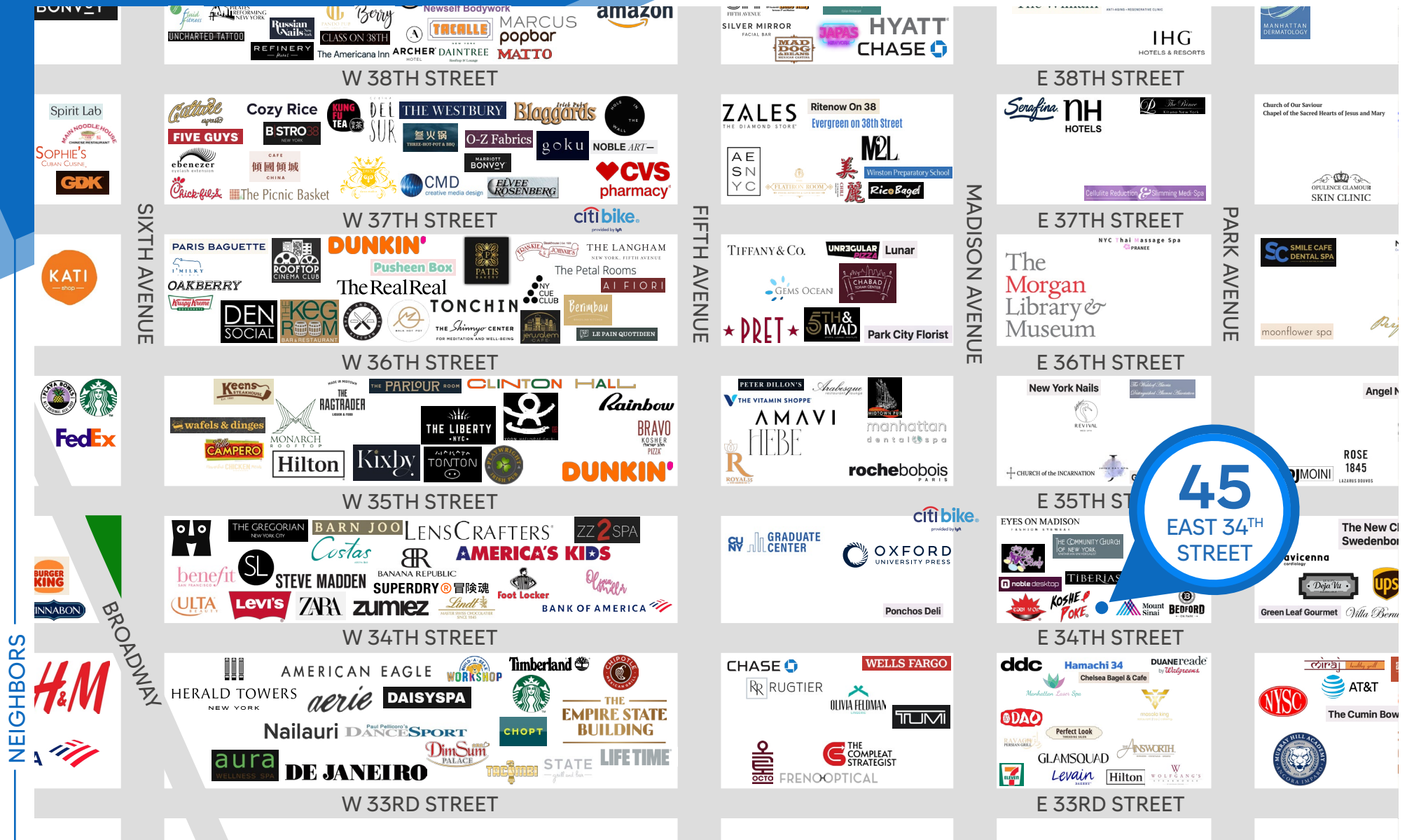
MERIDIAN
RETAIL LEASING

All information supplied is from sources deemed reliable and is furnished subject to errors, omissions, modifications, removal of the listing from sale or lease, and to any listing conditions, including the rates and manner of payment of commissions for particular offerings imposed by Meridian Capital Group. This information may include estimates and projections prepared by Meridian Capital Group with respect to future events, and these future events may or may not actually occur. Such estimates and projections reflect various assumptions concerning anticipated results. While Meridian Capital Group believes these assumptions are reasonable, there can be no assurance that any of these estimates and projections will be correct. Therefore, actual results may vary materially from these estimates and projections. Any square footage dimensions set forth are approximate.

45 EAST 34TH STREET

MURRAY HILL, NYC | Between Park and Madison Avenues

RETAIL/OFFICE FOR LEASE



JOHN ROESCH

Director
212.468.5971

jroesch@meridiancapital.com

MARIKO TANAKA

Associate
212.468.5955

mtanaka@meridiancapital.com



MERIDIAN
RETAIL LEASING

All information supplied is from sources deemed reliable and is furnished subject to errors, omissions, modifications, removal of the listing from sale or lease, and to any listing conditions, including the rates and manner of payment of commissions for particular offerings imposed by Meridian Capital Group. This information may include estimates and projections prepared by Meridian Capital Group with respect to future events, and these future events may or may not actually occur. Such estimates and projections reflect various assumptions concerning anticipated results. While Meridian Capital Group believes these assumptions are reasonable, there can be no assurance that any of these estimates and projections will be correct. Therefore, actual results may vary materially from these estimates and projections. Any square footage dimensions set forth are approximate.