

416

WEST BROADWAY SOHO, NYC

Between Spring & Prince Streets

RETAIL FOR LEASE

APPROXIMATE SIZE

Ground Floor: 1,542 SF
Lower Level: 941 SF

ASKING RENT

\$30,000/Month

POSSESSION

Immediate

TERM

10 Years

FRONTAGE

30 FT

COMMENTS

- Soho flagship opportunity surrounded by upscale retail and dining
- Excellent signage and street visibility
- Modern interior finishes
- Suitable for retail, wellness, food, or gallery uses

NEIGHBORS

Anthropologie • Silver Lining • The Ordinary • Boqueria • Pvolve • The Tox • Fellini Coffee • La Colombe • Milady's • Chobani • Aesop • Revelie • Little Prince • Ladurée Paris • Canada Goose

TRANSPORTATION



NOAM AZIZ

Director
212.468.5984
naziz@meridiancapital.com

CARSON SHAHRABANI

Associate
212.468.5927
cshahrabani@meridiancapital.com

JOSHUA VILINSKY

Associate
212.468.5922
jvilinsky@meridiancapital.com



MERIDIAN
RETAIL LEASING

All information supplied is from sources deemed reliable and is furnished subject to errors, omissions, modifications, removal of the listing from sale or lease, and to any listing conditions, including the rates and manner of payment of commissions for particular offerings imposed by Meridian Capital Group. This information may include estimates and projections prepared by Meridian Capital Group with respect to future events, and these future events may or may not actually occur. Such estimates and projections reflect various assumptions concerning anticipated results. While Meridian Capital Group believes these assumptions are reasonable, there can be no assurance that any of these estimates and projections will be correct. Therefore, actual results may vary materially from these estimates and projections. Any square footage dimensions set forth are approximate.



INTERIOR

NOAM AZIZ

Director
212.468.5984
naziz@meridiancapital.com

CARSON SHAHRABANI

Associate
212.468.5927
cshahrabani@meridiancapital.com

JOSHUA VILINSKY

Associate
212.468.5922
jvilinsky@meridiancapital.com



MERIDIAN
RETAIL LEASING

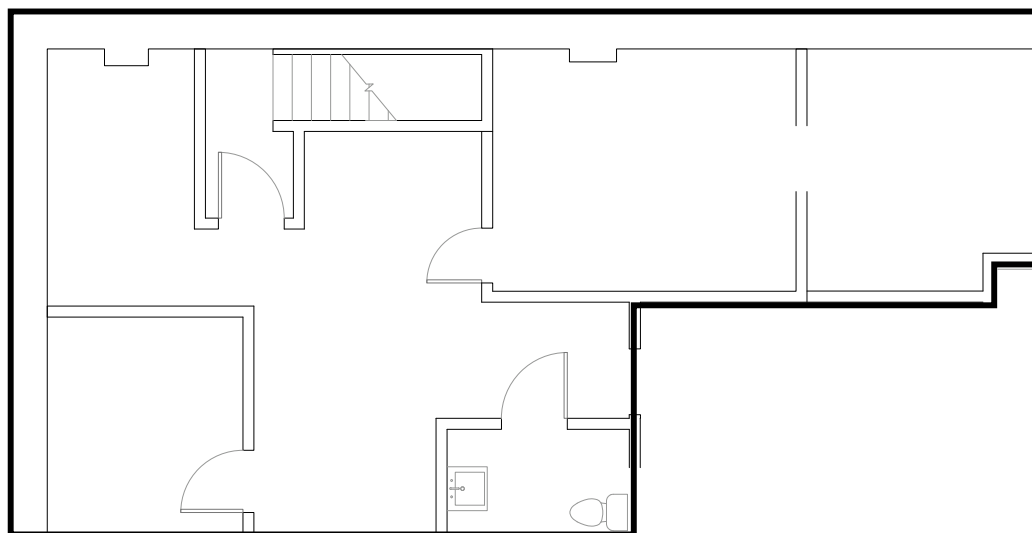
416 WEST BROADWAY

SOHO, NYC | Between Spring and Prince Streets

RETAIL FOR LEASE



GROUND FLOOR



LOWER LEVEL

FLOOR PLANS

NOAM AZIZ

Director
212.468.5984
naziz@meridiancapital.com

CARSON SHAHRABANI

Associate
212.468.5927
cshahrabani@meridiancapital.com

JOSHUA VILINSKY

Associate
212.468.5922
jvilinsky@meridiancapital.com



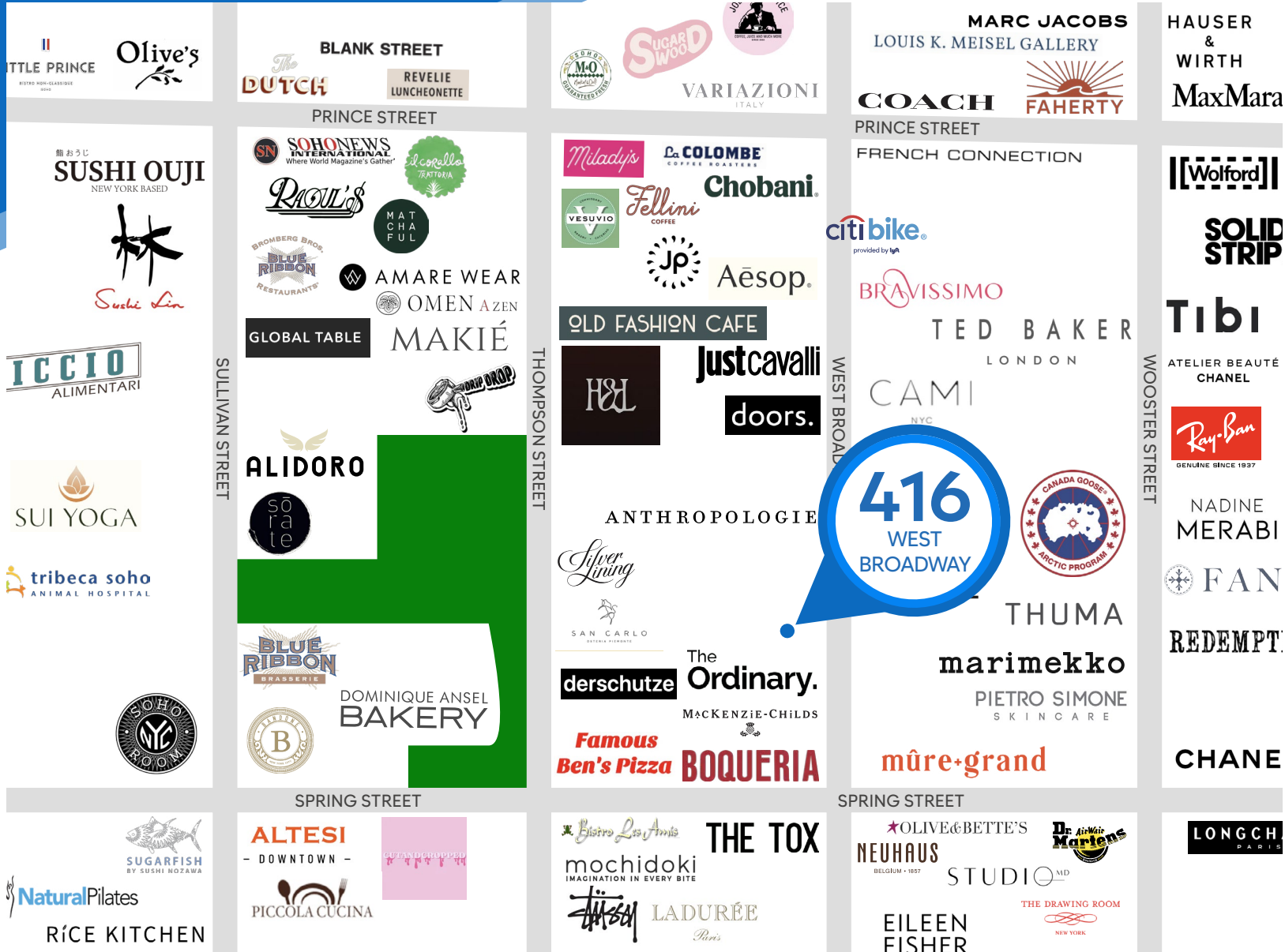
MERIDIAN
RETAIL LEASING

All information supplied is from sources deemed reliable and is furnished subject to errors, omissions, modifications, removal of the listing from sale or lease, and to any listing conditions, including the rates and manner of payment of commissions for particular offerings imposed by Meridian Capital Group. This information may include estimates and projections prepared by Meridian Capital Group with respect to future events, and these future events may or may not actually occur. Such estimates and projections reflect various assumptions concerning anticipated results. While Meridian Capital Group believes these assumptions are reasonable, there can be no assurance that any of these estimates and projections will be correct. Therefore, actual results may vary materially from these estimates and projections. Any square footage dimensions set forth are approximate.

416 WEST BROADWAY

SOHO, NYC | Between Spring and Prince Streets

RETAIL FOR LEASE



NEIGHBORS

NOAM AZIZ

Director
212.468.5984
naziz@meridiancapital.com

CARSON SHAHRABANI

Associate
212.468.5927
cshahrabani@meridiancapital.com

JOSHUA VILINSKY

Associate
212.468.5922
jvilinsky@meridiancapital.com



MERIDIAN
RETAIL LEASING

All information supplied is from sources deemed reliable and is furnished subject to errors, omissions, modifications, removal of the listing from sale or lease, and to any listing conditions, including the rates and manner of payment of commissions for particular offerings imposed by Meridian Capital Group. This information may include estimates and projections prepared by Meridian Capital Group with respect to future events, and these future events may or may not actually occur. Such estimates and projections reflect various assumptions concerning anticipated results. While Meridian Capital Group believes these assumptions are reasonable, there can be no assurance that any of these estimates and projections will be correct. Therefore, actual results may vary materially from these estimates and projections. Any square footage dimensions set forth are approximate.