

241

CHURCH STREET TRIBECA, NYC

Between Worth & Leonard Streets

RETAIL FOR LEASE

APPROXIMATE SIZE

Ground Floor: 2,327 SF
Lower Level: 3,670 SF
Sub-Lower Level: 12,558 SF

ASKING RENT

\$48,000/Month

POSSESSION

Immediate

TERM

Negotiable

FRONTAGE

40 FT

COMMENTS

- Prime Tribeca location surrounded by luxury residences, boutique hotels, and high-end retail
- Soaring 10-15 FT ceilings
- Located off a well-traveled corner with large frontage
- High foot traffic
- All uses considered

NEIGHBORS

Goa • Crunch Fitness • SLT • Chase Bank •
Frenchette Bakery • Two Hands • Billy's Bakery
• Buckle My Shoe Preschool • Think Coffee
• Tracy Anderson • Aire Ancient Baths

TRANSPORTATION

1 E 4 5 6 N Q R W



PROPERTY INFORMATION

JAMES FAMULARO

President
646.658.7373
jfamularo@meridiancapital.com

JORDAN LANGER

Senior Associate
212.468.5977
jlanger@meridiancapital.com

MARCELO DEMORAES

Associate
212.468.5904
mdemoraes@meridiancapital.com



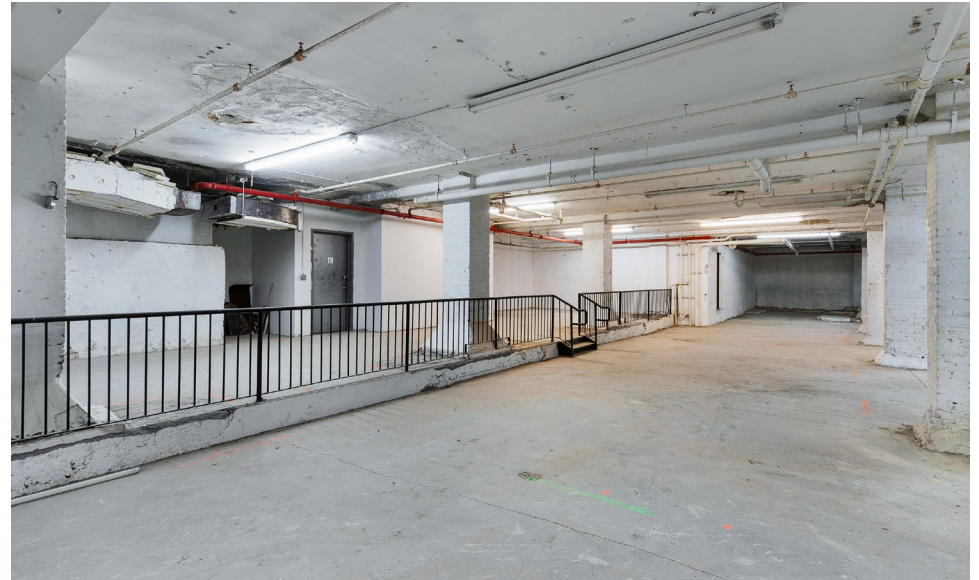
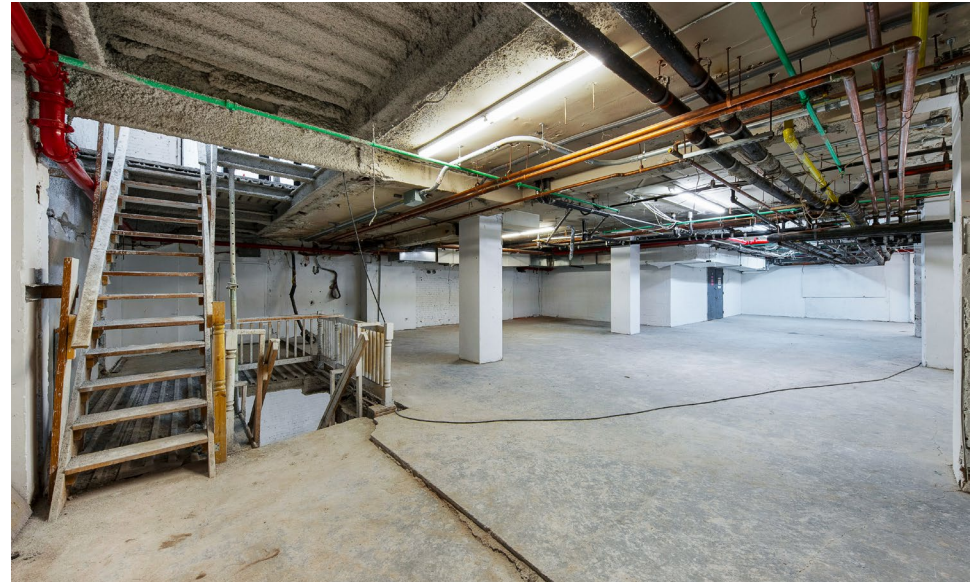
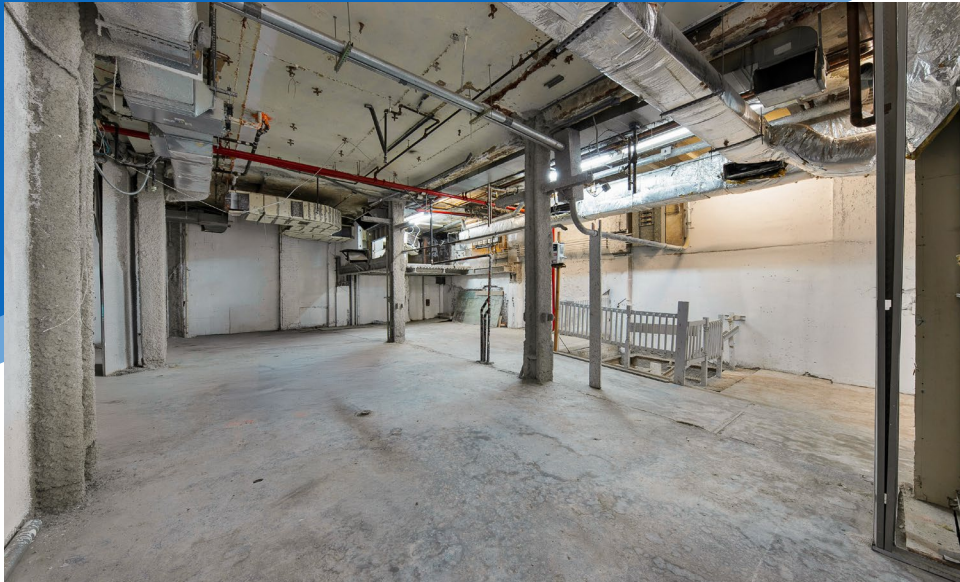
MERIDIAN
RETAIL LEASING

All information supplied is from sources deemed reliable and is furnished subject to errors, omissions, modifications, removal of the listing from sale or lease, and to any listing conditions, including the rates and manner of payment of commissions for particular offerings imposed by Meridian Capital Group. This information may include estimates and projections prepared by Meridian Capital Group with respect to future events, and these future events may or may not actually occur. Such estimates and projections reflect various assumptions concerning anticipated results. While Meridian Capital Group believes these assumptions are reasonable, there can be no assurance that any of these estimates and projections will be correct. Therefore, actual results may vary materially from these estimates and projections. Any square footage dimensions set forth are approximate.

241 CHURCH STREET

TRIBECA, NYC | Between Worth and Leonard Streets

RETAIL FOR LEASE



INTERIOR

JAMES FAMULARO

President
646.658.7373
jfamularo@meridiancapital.com

JORDAN LANGER

Senior Associate
212.468.5977
jlanger@meridiancapital.com

MARCELO DEMORAES

Associate
212.468.5904
mdemoraes@meridiancapital.com



MERIDIAN
RETAIL LEASING

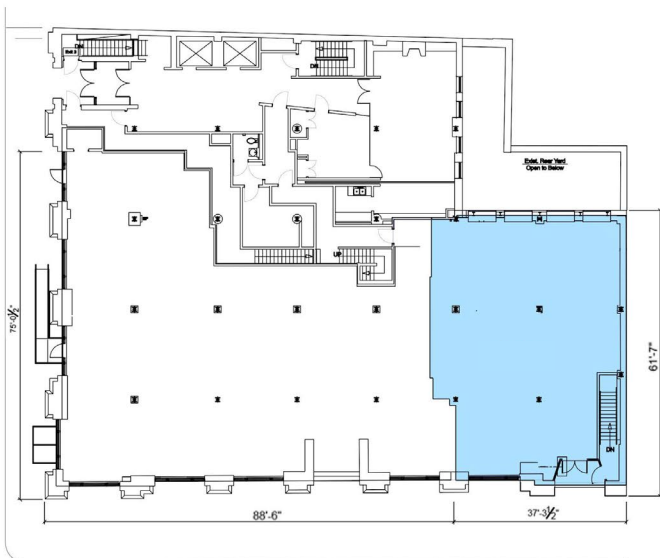
All information supplied is from sources deemed reliable and is furnished subject to errors, omissions, modifications, removal of the listing from sale or lease, and to any listing conditions, including the rates and manner of payment of commissions for particular offerings imposed by Meridian Capital Group. This information may include estimates and projections prepared by Meridian Capital Group with respect to future events, and these future events may or may not actually occur. Such estimates and projections reflect various assumptions concerning anticipated results. While Meridian Capital Group believes these assumptions are reasonable, there can be no assurance that any of these estimates and projections will be correct. Therefore, actual results may vary materially from these estimates and projections. Any square footage dimensions set forth are approximate.

241 CHURCH STREET

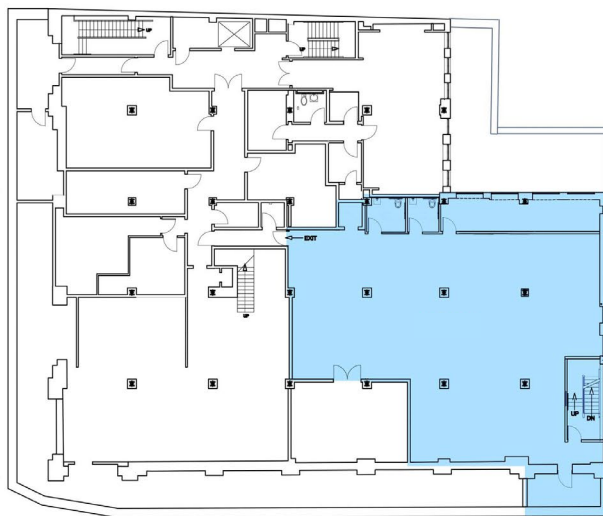
TRIBECA, NYC | Between Worth and Leonard Streets

RETAIL FOR LEASE

FLOOR PLANS



GROUND FLOOR



LOWER LEVEL



SUB-LOWER LEVEL

JAMES FAMULARO

President
646.658.7373
jfamularo@meridiancapital.com

JORDAN LANGER

Senior Associate
212.468.5977
jlanger@meridiancapital.com

MARCELO DEMORAES

Associate
212.468.5904
mdemoraes@meridiancapital.com



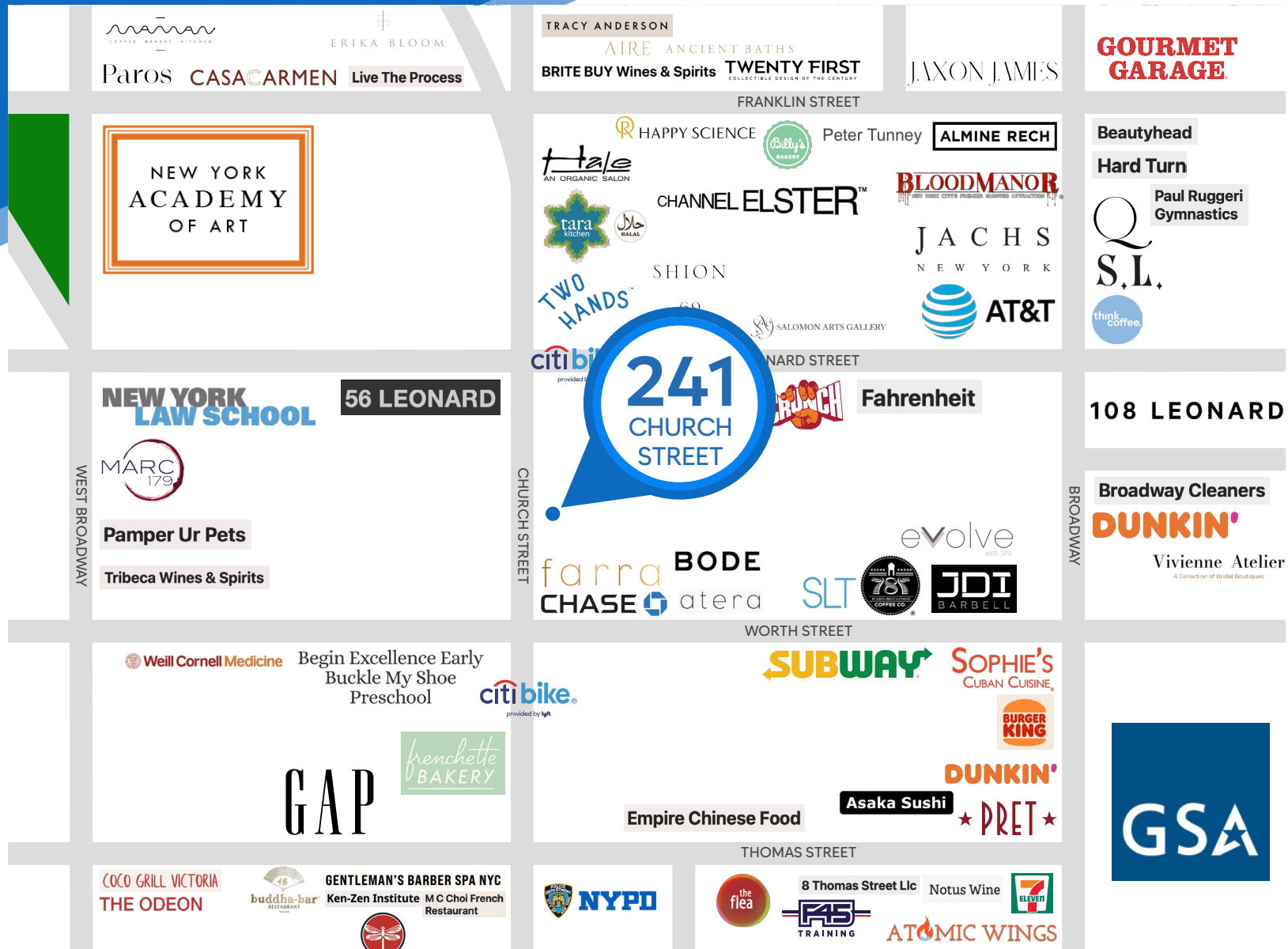
MERIDIAN
RETAIL LEASING

All information supplied is from sources deemed reliable and is furnished subject to errors, omissions, modifications, removal of the listing from sale or lease, and to any listing conditions, including the rates and manner of payment of commissions for particular offerings imposed by Meridian Capital Group. This information may include estimates and projections prepared by Meridian Capital Group with respect to future events, and these future events may or may not actually occur. Such estimates and projections reflect various assumptions concerning anticipated results. While Meridian Capital Group believes these assumptions are reasonable, there can be no assurance that any of these estimates and projections will be correct. Therefore, actual results may vary materially from these estimates and projections. Any square footage dimensions set forth are approximate.

241 CHURCH STREET

TRIBECA, NYC | Between Worth and Leonard Streets

RETAIL FOR LEASE



NEIGHBORS

JAMES FAMULARO

President
646.658.7373
jfamularo@meridiancapital.com

JORDAN LANGER

Senior Associate
212.468.5977
jlanger@meridiancapital.com

MARCELO DEMORAES

Associate
212.468.5904
mdemoraes@meridiancapital.com



MERIDIAN
RETAIL LEASING

All information supplied is from sources deemed reliable and is furnished subject to errors, omissions, modifications, removal of the listing from sale or lease, and to any listing conditions, including the rates and manner of payment of commissions for particular offerings imposed by Meridian Capital Group. This information may include estimates and projections prepared by Meridian Capital Group with respect to future events, and these future events may or may not actually occur. Such estimates and projections reflect various assumptions concerning anticipated results. While Meridian Capital Group believes these assumptions are reasonable, there can be no assurance that any of these estimates and projections will be correct. Therefore, actual results may vary materially from these estimates and projections. Any square footage dimensions set forth are approximate.