

20

WEST 38TH STREET MIDTOWN, NYC

Between Fifth & Sixth Avenues

RETAIL/OFFICE FOR LEASE

APPROXIMATE SIZE

2nd Floor: 3,000 SF

ASKING RENT

~~\$10,000/Month~~ Reduced
\$9,000/Month

POSSESSION

Immediate

TERM

5-10 Years

COMMENTS

- Fully built-out dental/medical office
- Located next to strong co-tenancy with great visibility
- High foot traffic area
- Existing bathroom in place
- Ideal for beauty, wellness, studio, etc.

NEIGHBORS

Bryant Park • Le Pain Quotidien • Koi Restaurant
• La Pecora Bianca • Core Power Yoga • The
Roby Theatre • Silver Mirror Facial Bar • Hyatt
• Archer Hotel • Callo Dao • Parker & Quinn
• Park Terrace Hotel • Marriot Bonvoy

TRANSPORTATION

1 2 3 N Q R W 7

NOAM AZIZ

Director
212.468.5984
naziz@meridiancapital.com

CARSON SHAHRABANI

Associate
212.468.5927
cshahrabani@meridiancapital.com

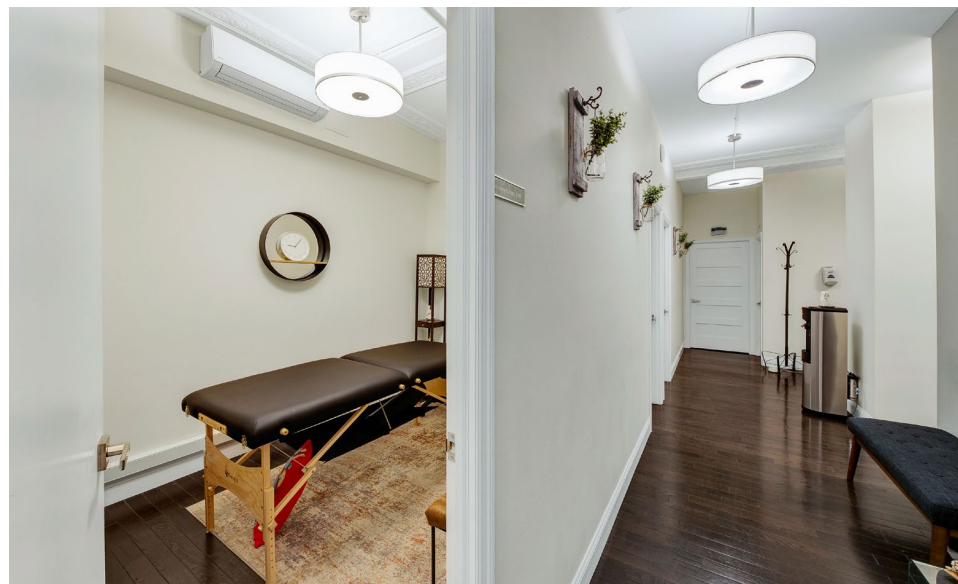
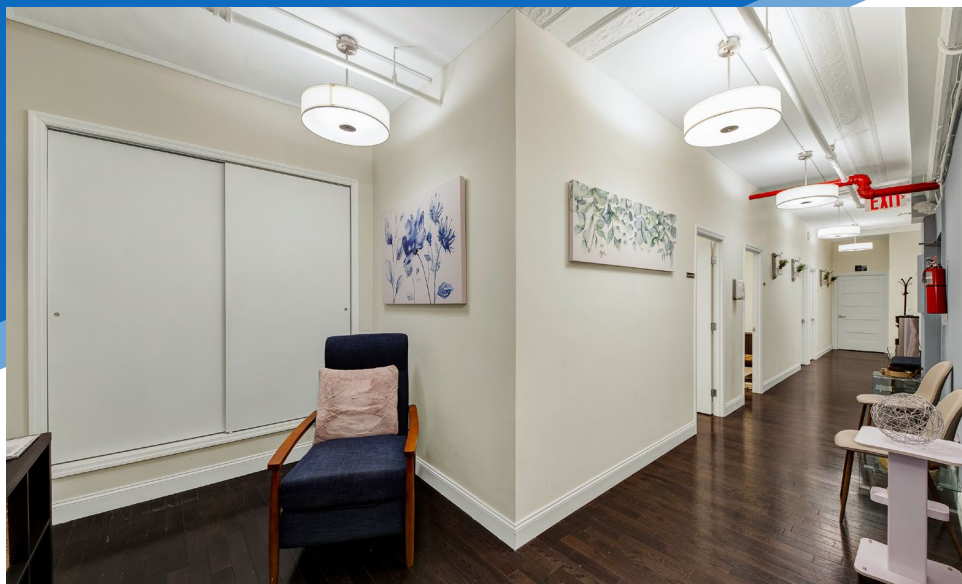
ARIEL ILIAN

Associate
212.468.5986
ailian@meridiancapital.com



MERIDIAN
RETAIL LEASING

All information supplied is from sources deemed reliable and is furnished subject to errors, omissions, modifications, removal of the listing from sale or lease, and to any listing conditions, including the rates and manner of payment of commissions for particular offerings imposed by Meridian Capital Group. This information may include estimates and projections prepared by Meridian Capital Group with respect to future events, and these future events may or may not actually occur. Such estimates and projections reflect various assumptions concerning anticipated results. While Meridian Capital Group believes these assumptions are reasonable, there can be no assurance that any of these estimates and projections will be correct. Therefore, actual results may vary materially from these estimates and projections. Any square footage dimensions set forth are approximate.



INTERIOR

NOAM AZIZ

Director
212.468.5984
naziz@meridiancapital.com

CARSON SHAHRABANI

Associate
212.468.5927
cshahrabani@meridiancapital.com

ARIEL ILIAN

Associate
212.468.5986
ailian@meridiancapital.com

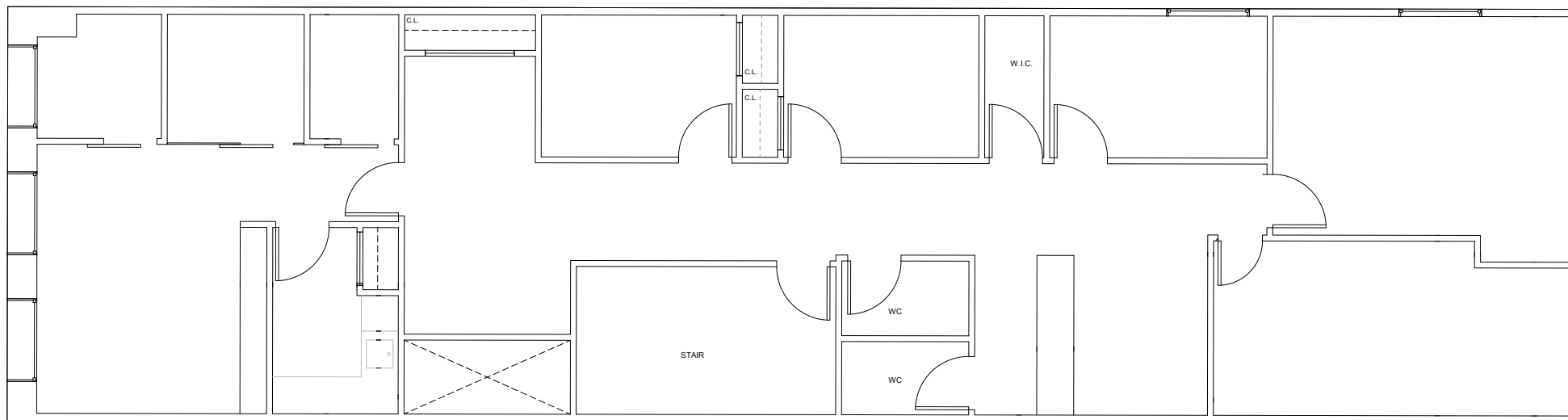


MERIDIAN
RETAIL LEASING

20 WEST 38TH STREET
MIDTOWN, NYC | Between Fifth and Sixth Avenues

RETAIL/OFFICE FOR LEASE

FLOOR PLAN



NOAM AZIZ

Director
212.468.5984
naziz@meridiancapital.com

CARSON SHAHRABANI

Associate
212.468.5927
cshahrabani@meridiancapital.com

ARIEL ILIAN

Associate
212.468.5986
ailian@meridiancapital.com



MERIDIAN
RETAIL LEASING

All information supplied is from sources deemed reliable and is furnished subject to errors, omissions, modifications, removal of the listing from sale or lease, and to any listing conditions, including the rates and manner of payment of commissions for particular offerings imposed by Meridian Capital Group. This information may include estimates and projections prepared by Meridian Capital Group with respect to future events, and these future events may or may not actually occur. Such estimates and projections reflect various assumptions concerning anticipated results. While Meridian Capital Group believes these assumptions are reasonable, there can be no assurance that any of these estimates and projections will be correct. Therefore, actual results may vary materially from these estimates and projections. Any square footage dimensions set forth are approximate.



NOAM AZIZ

Director
212.468.5984
naziz@meridiancapital.com

CARSON SHAHRABANI

Associate
212.468.5927
cshahrabani@meridiancapital.com

ARIEL ILIAN

Associate
212.468.5986
ailian@meridiancapital.com



MERIDIAN
RETAIL LEASING