

177

PRINCE STREET SOHO, NYC

Between Thompson & Sullivan Streets

RESTAURANT FOR LEASE

APPROXIMATE SIZE

Ground Floor: 2,000 SF
Lower Level: 2,000 SF

ASKING RENT

\$45,000/Month

POSSESSION

Arranged

TERM

10-15 Years

FRONTAGE

20 FT

COMMENTS

- Turn-key restaurant in the heart of SoHo
- Fully vented with an immaculate kitchen in place
- Open layout with no column intrusions
- No key-money
- Heavy foot traffic and strong co-tenancy

NEIGHBORS

Revelie • Raoul's • The Dutch • Milady's • Sushi Ikumi • Olive's • Little Prince • Blue Ribbon Sushi • Fellini • Café Yaya • Omen Azen • Mori Sushi • Lola Taverna • Sugarfish • Altesì Downtown • Bandone

TRANSPORTATION



PROPERTY INFORMATION

JAMES FAMULARO

President
646.658.7373
jfamularo@meridiancapital.com



MERIDIAN
RETAIL LEASING

All information supplied is from sources deemed reliable and is furnished subject to errors, omissions, modifications, removal of the listing from sale or lease, and to any listing conditions, including the rates and manner of payment of commissions for particular offerings imposed by Meridian Capital Group. This information may include estimates and projections prepared by Meridian Capital Group with respect to future events, and these future events may or may not actually occur. Such estimates and projections reflect various assumptions concerning anticipated results. While Meridian Capital Group believes these assumptions are reasonable, there can be no assurance that any of these estimates and projections will be correct. Therefore, actual results may vary materially from these estimates and projections. Any square footage dimensions set forth are approximate.

177 PRINCE STREET
SOHO, NYC | Between Thompson and Sullivan Streets

RESTAURANT FOR LEASE



INTERIOR

JAMES FAMULARO

President
646.658.7373
jfamularo@meridiancapital.com



MERIDIAN
RETAIL LEASING

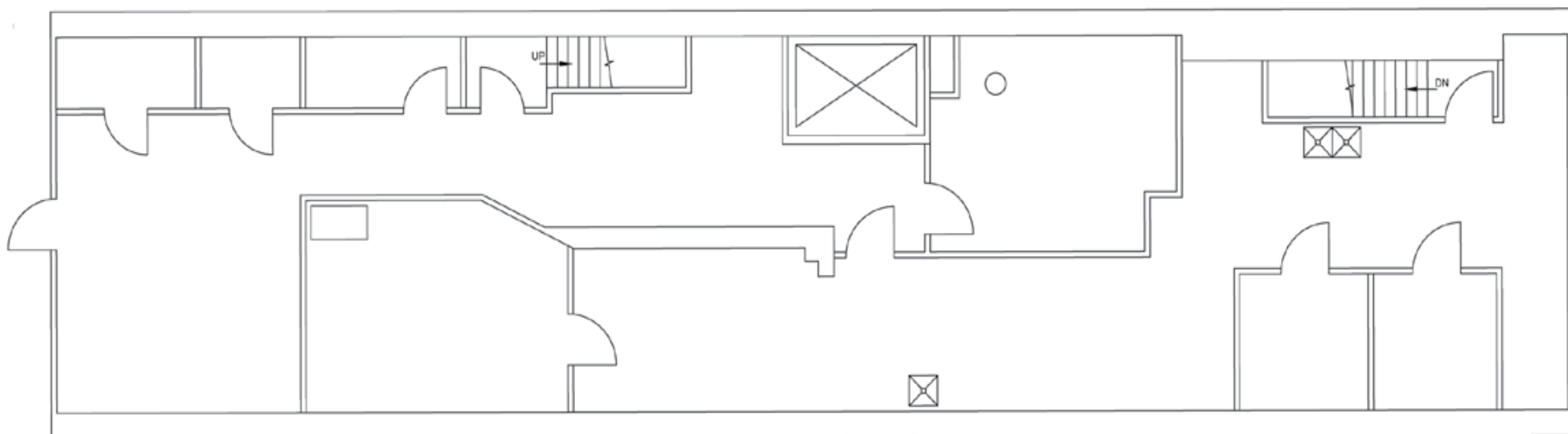
All information supplied is from sources deemed reliable and is furnished subject to errors, omissions, modifications, removal of the listing from sale or lease, and to any listing conditions, including the rates and manner of payment of commissions for particular offerings imposed by Meridian Capital Group. This information may include estimates and projections prepared by Meridian Capital Group with respect to future events, and these future events may or may not actually occur. Such estimates and projections reflect various assumptions concerning anticipated results. While Meridian Capital Group believes these assumptions are reasonable, there can be no assurance that any of these estimates and projections will be correct. Therefore, actual results may vary materially from these estimates and projections. Any square footage dimensions set forth are approximate.

177 PRINCE STREET
SOHO, NYC | Between Thompson and Sullivan Streets

RESTAURANT FOR LEASE



GROUND FLOOR



LOWER LEVEL

FLOOR PLANS

JAMES FAMULARO
President
646.658.7373
jfamularo@meridiancapital.com



MERIDIAN
RETAIL LEASING

All information supplied is from sources deemed reliable and is furnished subject to errors, omissions, modifications, removal of the listing from sale or lease, and to any listing conditions, including the rates and manner of payment of commissions for particular offerings imposed by Meridian Capital Group. This information may include estimates and projections prepared by Meridian Capital Group with respect to future events, and these future events may or may not actually occur. Such estimates and projections reflect various assumptions concerning anticipated results. While Meridian Capital Group believes these assumptions are reasonable, there can be no assurance that any of these estimates and projections will be correct. Therefore, actual results may vary materially from these estimates and projections. Any square footage dimensions set forth are approximate.

177 PRINCE STREET

SOHO, NYC | Between Thompson and Sullivan Streets

RESTAURANT FOR LEASE



NEIGHBORS

JAMES FAMULARO

President
646.658.7373
jfamularo@meridiancapital.com



MERIDIAN
RETAIL LEASING

All information supplied is from sources deemed reliable and is furnished subject to errors, omissions, modifications, removal of the listing from sale or lease, and to any listing conditions, including the rates and manner of payment of commissions for particular offerings imposed by Meridian Capital Group. This information may include estimates and projections prepared by Meridian Capital Group with respect to future events, and these future events may or may not actually occur. Such estimates and projections reflect various assumptions concerning anticipated results. While Meridian Capital Group believes these assumptions are reasonable, there can be no assurance that any of these estimates and projections will be correct. Therefore, actual results may vary materially from these estimates and projections. Any square footage dimensions set forth are approximate.