

# ONE

## WALL STREET COURT FINANCIAL DISTRICT, NYC

Between Pearl & Hanover Streets

ICONIC RESTAURANT FOR LEASE

### APPROXIMATE SIZE/ASKING RENT

Upper Level: 7,500 SF | \$55,000/Month  
Lower Level: 5,000 SF | \$30,000/Month

### TERM

10-15 Years

### FRONTAGE

100 FT on Beaver Street  
100 FT on Pearl Street

### POSSESSION

Immediate

### CEILING HEIGHTS

Ground Floor: 18 FT  
Lower Level: 12 FT

### COMMENTS

- Duplex restaurant space that can be divided
- Ground floor previously "Haru Sushi"
- Lower level previously "Fina"
- Now vacant and ready to lease
- Located at the base of the frequently photographed Cocoa Exchange Building, one of New York City's few landmarks similar in shape to the Flatiron Building
- Twelve new windows installed along Beaver and Pearl Streets in the lower level

### NEIGHBORS

The Dead Rabbit • Delmonico's • La Colombe Coffee Roasters • Whole Foods • Sweetgreen • Joe & The Juice • Leo's Bagels • CAVA • Andaz Hotel • Barclay Rex

### TRANSPORTATION

2 3 J Z 4 5

### JAMES FAMULARO

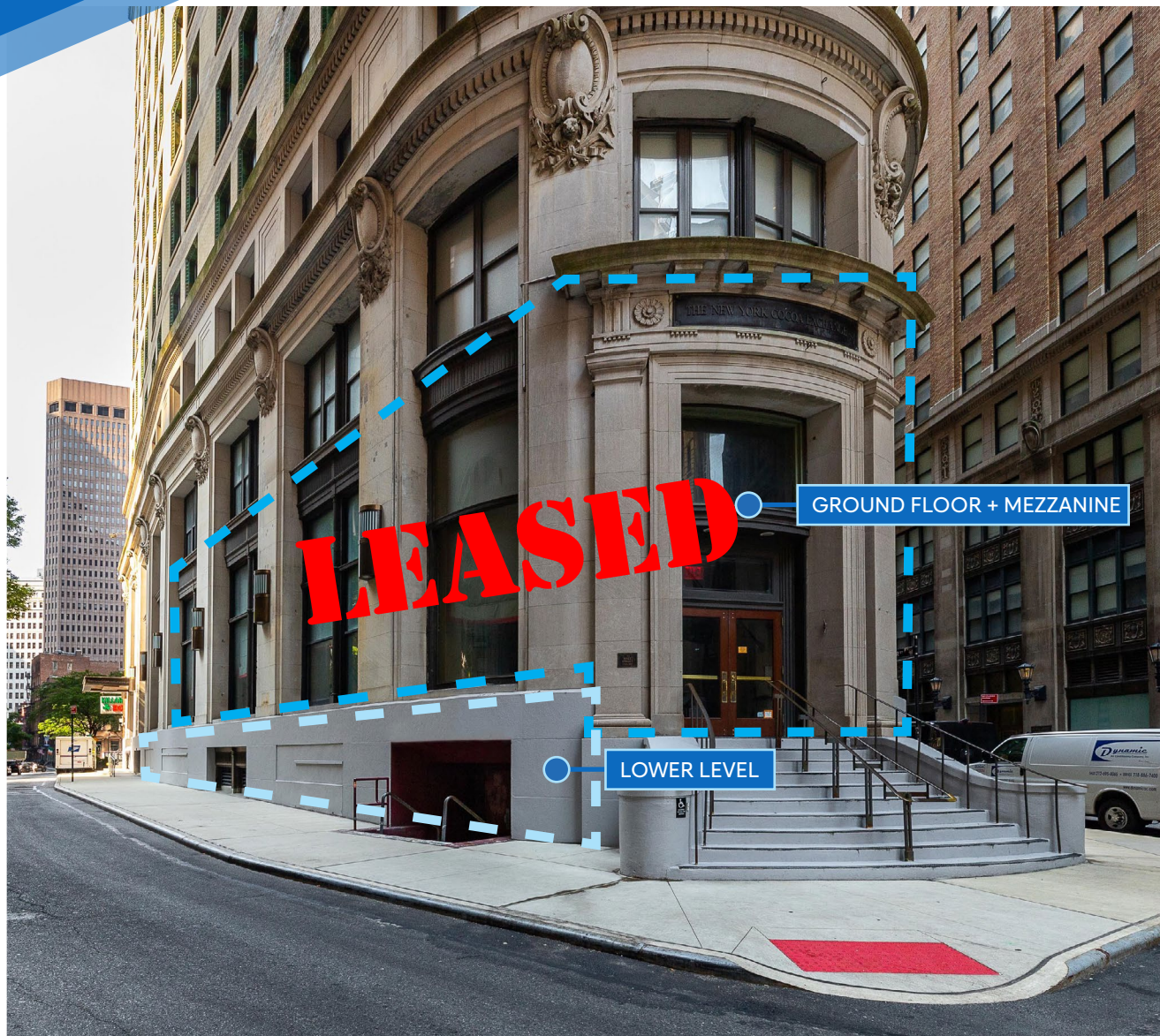
President  
646.658.7373  
jfamularo@meridiancapital.com

### KYLE FINK

Senior Associate  
212.468.5980  
kfink@meridiancapital.com

### CORY RYWALT

Associate  
212.468.5973  
crywalt@meridiancapital.com



All information supplied is from sources deemed reliable and is furnished subject to errors, omissions, modifications, removal of the listing from sale or lease, and to any listing conditions, including the rates and manner of payment of commissions for particular offerings imposed by Meridian Capital Group. This information may include estimates and projections prepared by Meridian Capital Group with respect to future events, and these future events may or may not actually occur. Such estimates and projections reflect various assumptions concerning anticipated results. While Meridian Capital Group believes these assumptions are reasonable, there can be no assurance that any of these estimates and projections will be correct. Therefore, actual results may vary materially from these estimates and projections. Any square footage dimensions set forth are approximate.



ONE WALL STREET COURT  
FINANCIAL DISTRICT, NYC | Between Pearl and Hanover Streets

ICONIC RESTAURANT FOR LEASE

INTERIOR | GROUND FLOOR + MEZZANINE



JAMES FAMULARO

President  
646.658.7373  
jfamularo@meridiancapital.com

KYLE FINK

Senior Associate  
212.468.5980  
kfink@meridiancapital.com

CORY RYWALT

Associate  
212.468.5973  
crywalt@meridiancapital.com



All information supplied is from sources deemed reliable and is furnished subject to errors, omissions, modifications, removal of the listing from sale or lease, and to any listing conditions, including the rates and manner of payment of commissions for particular offerings imposed by Meridian Capital Group. This information may include estimates and projections prepared by Meridian Capital Group with respect to future events, and these future events may or may not actually occur. Such estimates and projections reflect various assumptions concerning anticipated results. While Meridian Capital Group believes these assumptions are reasonable, there can be no assurance that any of these estimates and projections will be correct. Therefore, actual results may vary materially from these estimates and projections. Any square footage dimensions set forth are approximate.



# ONE WALL STREET COURT

FINANCIAL DISTRICT, NYC | Between Pearl and Hanover Streets

ICONIC RESTAURANT FOR LEASE



INTERIOR | LOWER LEVEL

## JAMES FAMULARO

President  
646.658.7373  
jfamularo@meridiancapital.com

## KYLE FINK

Senior Associate  
212.468.5980  
kfink@meridiancapital.com

## CORY RYWALT

Associate  
212.468.5973  
crywalt@meridiancapital.com



All information supplied is from sources deemed reliable and is furnished subject to errors, omissions, modifications, removal of the listing from sale or lease, and to any listing conditions, including the rates and manner of payment of commissions for particular offerings imposed by Meridian Capital Group. This information may include estimates and projections prepared by Meridian Capital Group with respect to future events, and these future events may or may not actually occur. Such estimates and projections reflect various assumptions concerning anticipated results. While Meridian Capital Group believes these assumptions are reasonable, there can be no assurance that any of these estimates and projections will be correct. Therefore, actual results may vary materially from these estimates and projections. Any square footage dimensions set forth are approximate.

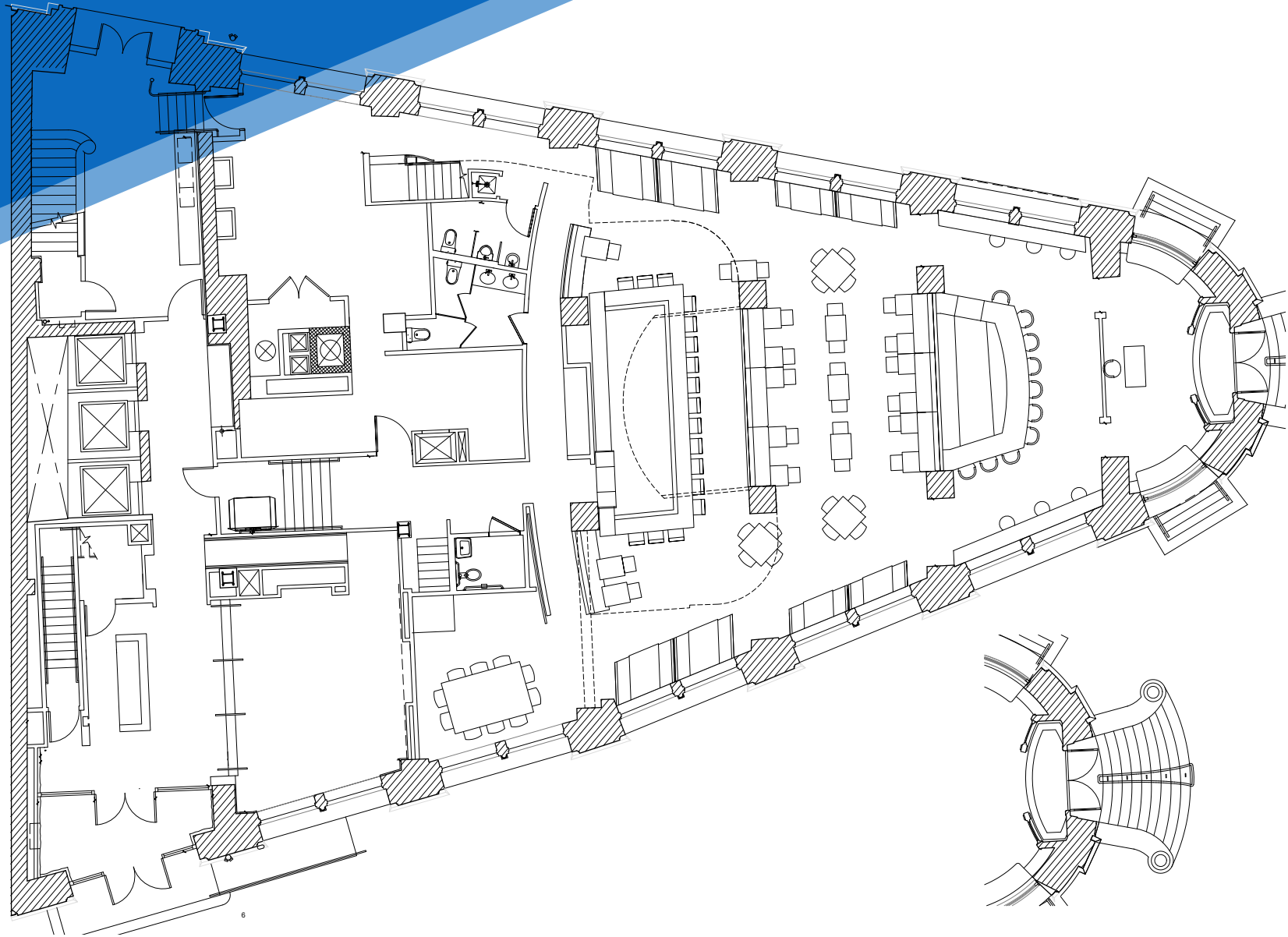


# ONE WALL STREET COURT

FINANCIAL DISTRICT, NYC | Between Pearl and Hanover Streets

ICONIC RESTAURANT FOR LEASE

FLOOR PLAN | GROUND FLOOR



## JAMES FAMULARO

President  
646.658.7373  
jfamularo@meridiancapital.com

## KYLE FINK

Senior Associate  
212.468.5980  
kfink@meridiancapital.com

## CORY RYWALT

Associate  
212.468.5973  
crywalt@meridiancapital.com



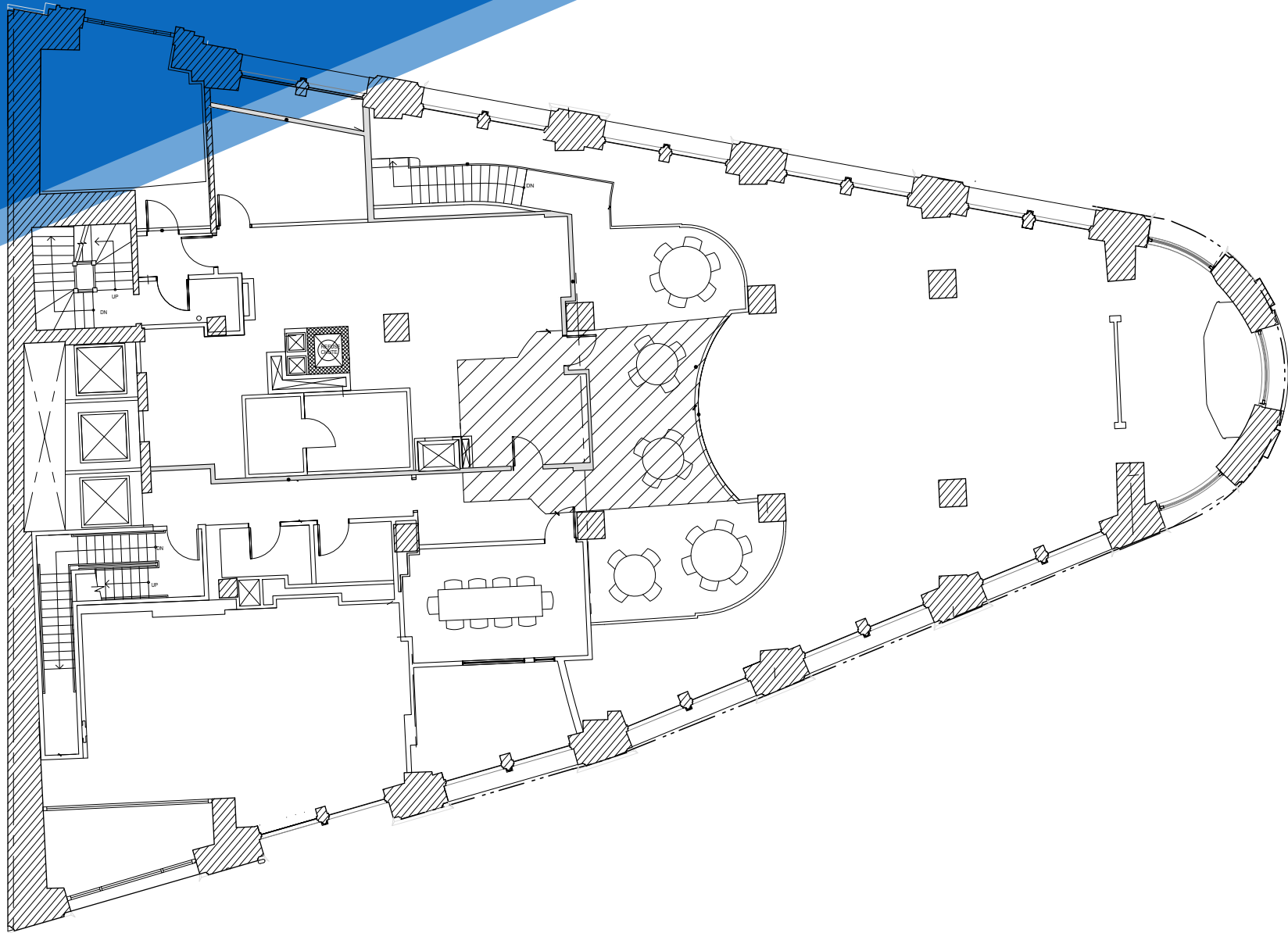
All information supplied is from sources deemed reliable and is furnished subject to errors, omissions, modifications, removal of the listing from sale or lease, and to any listing conditions, including the rates and manner of payment of commissions for particular offerings imposed by Meridian Capital Group. This information may include estimates and projections prepared by Meridian Capital Group with respect to future events, and these future events may or may not actually occur. Such estimates and projections reflect various assumptions concerning anticipated results. While Meridian Capital Group believes these assumptions are reasonable, there can be no assurance that any of these estimates and projections will be correct. Therefore, actual results may vary materially from these estimates and projections. Any square footage dimensions set forth are approximate.

# ONE WALL STREET COURT

FINANCIAL DISTRICT, NYC | Between Pearl and Hanover Streets

ICONIC RESTAURANT FOR LEASE

FLOOR PLAN | MEZZANINE



## JAMES FAMULARO

President  
646.658.7373  
jfamularo@meridiancapital.com

## KYLE FINK

Senior Associate  
212.468.5980  
kfink@meridiancapital.com

## CORY RYWALT

Associate  
212.468.5973  
crywalt@meridiancapital.com



All information supplied is from sources deemed reliable and is furnished subject to errors, omissions, modifications, removal of the listing from sale or lease, and to any listing conditions, including the rates and manner of payment of commissions for particular offerings imposed by Meridian Capital Group. This information may include estimates and projections prepared by Meridian Capital Group with respect to future events, and these future events may or may not actually occur. Such estimates and projections reflect various assumptions concerning anticipated results. While Meridian Capital Group believes these assumptions are reasonable, there can be no assurance that any of these estimates and projections will be correct. Therefore, actual results may vary materially from these estimates and projections. Any square footage dimensions set forth are approximate.

# ONE WALL STREET COURT

FINANCIAL DISTRICT, NYC | Between Pearl and Hanover Streets

ICONIC RESTAURANT FOR LEASE

FLOOR PLAN | LOWER LEVEL



## JAMES FAMULARO

President  
646.658.7373  
jfamularo@meridiancapital.com

## KYLE FINK

Senior Associate  
212.468.5980  
kfink@meridiancapital.com

## CORY RYWALT

Associate  
212.468.5973  
crywalt@meridiancapital.com



All information supplied is from sources deemed reliable and is furnished subject to errors, omissions, modifications, removal of the listing from sale or lease, and to any listing conditions, including the rates and manner of payment of commissions for particular offerings imposed by Meridian Capital Group. This information may include estimates and projections prepared by Meridian Capital Group with respect to future events, and these future events may or may not actually occur. Such estimates and projections reflect various assumptions concerning anticipated results. While Meridian Capital Group believes these assumptions are reasonable, there can be no assurance that any of these estimates and projections will be correct. Therefore, actual results may vary materially from these estimates and projections. Any square footage dimensions set forth are approximate.

# ONE WALL STREET COURT

FINANCIAL DISTRICT, NYC | Between Pearl and Hanover Streets

## ICONIC RESTAURANT FOR LEASE



NEIGHBORS

### JAMES FAMULARO

President  
646.658.7373  
jfamularo@meridiancapital.com

### KYLE FINK

Senior Associate  
212.468.5980  
kfink@meridiancapital.com

### CORY RYWALT

Associate  
212.468.5973  
crywalt@meridiancapital.com



All information supplied is from sources deemed reliable and is furnished subject to errors, omissions, modifications, removal of the listing from sale or lease, and to any listing conditions, including the rates and manner of payment of commissions for particular offerings imposed by Meridian Capital Group. This information may include estimates and projections prepared by Meridian Capital Group with respect to future events, and these future events may or may not actually occur. Such estimates and projections reflect various assumptions concerning anticipated results. While Meridian Capital Group believes these assumptions are reasonable, there can be no assurance that any of these estimates and projections will be correct. Therefore, actual results may vary materially from these estimates and projections. Any square footage dimensions set forth are approximate.