

# 5

## EAST 111<sup>TH</sup> STREET EAST HARLEM, NYC

Between Madison & Fifth Avenues

COMMUNITY/COMMERCIAL FOR LEASE

### APPROXIMATE SIZE

Ground Floor: 1,838 SF

### ASKING RENT

\$7,650/Month

### POSSESSION

Immediate

### TERM

Negotiable

### FRONTAGE

21 FT

### COMMENTS

- Turn-key childcare space; previously "Harlem Academy"
- 2 large classrooms with multiple small workspaces
- Close proximity to transit
- Located at the base of a luxury condominium building one-block from Central Park
- All community facility uses accepted

### NEIGHBORS

CTown Market • Bagel Burger Bar • Teranga • R&C Wine & Liquor • Park Deli • Success Academy

### TRANSPORTATION

2 3 6



JAMES FAMULARO  
President

DANE HARLOWE  
Director  
212.468.5966  
dharlowe@meridiancapital.com

NOAM AZIZ  
Director  
212.468.5984  
naziz@meridiancapital.com

CORY RYWALT  
Associate  
212.468.5973  
crywalt@meridiancapital.com



**MERIDIAN**  
RETAIL LEASING

All information supplied is from sources deemed reliable and is furnished subject to errors, omissions, modifications, removal of the listing from sale or lease, and to any listing conditions, including the rates and manner of payment of commissions for particular offerings imposed by Meridian Capital Group. This information may include estimates and projections prepared by Meridian Capital Group with respect to future events, and these future events may or may not actually occur. Such estimates and projections reflect various assumptions concerning anticipated results. While Meridian Capital Group believes these assumptions are reasonable, there can be no assurance that any of these estimates and projections will be correct. Therefore, actual results may vary materially from these estimates and projections. Any square footage dimensions set forth are approximate.



5 EAST 111<sup>TH</sup> STREET  
EAST HARLEM, NYC | Between Madison and Fifth Avenues

COMMUNITY/COMMERCIAL FOR LEASE



INTERIOR

JAMES FAMULARO  
President

DANE HARLOWE  
Director  
212.468.5966  
dharlowe@meridiancapital.com

NOAM AZIZ  
Director  
212.468.5984  
naziz@meridiancapital.com

CORY RYWALT  
Associate  
212.468.5973  
crywalt@meridiancapital.com



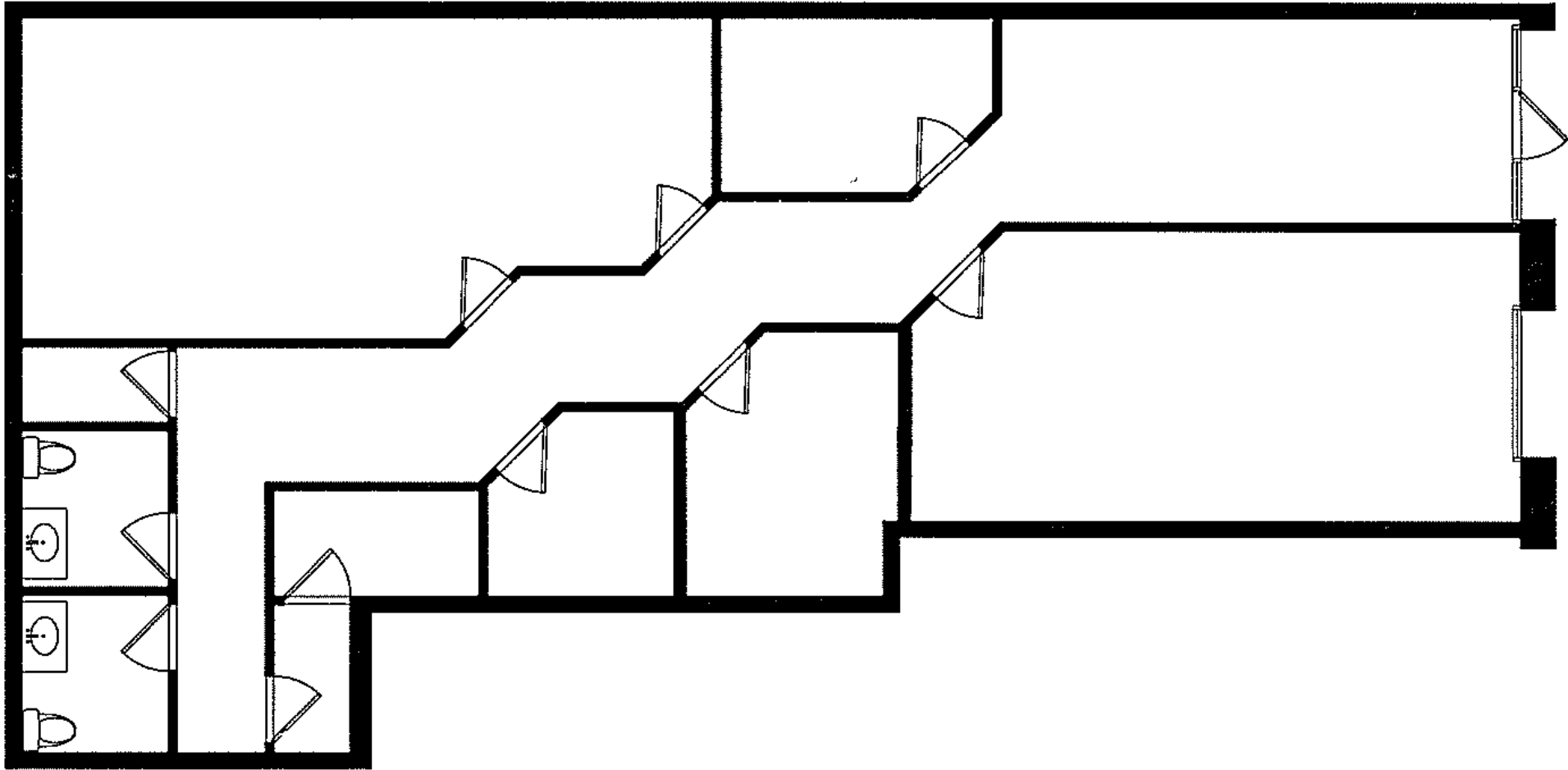
**MERIDIAN**  
RETAIL LEASING

All information supplied is from sources deemed reliable and is furnished subject to errors, omissions, modifications, removal of the listing from sale or lease, and to any listing conditions, including the rates and manner of payment of commissions for particular offerings imposed by Meridian Capital Group. This information may include estimates and projections prepared by Meridian Capital Group with respect to future events, and these future events may or may not actually occur. Such estimates and projections reflect various assumptions concerning anticipated results. While Meridian Capital Group believes these assumptions are reasonable, there can be no assurance that any of these estimates and projections will be correct. Therefore, actual results may vary materially from these estimates and projections. Any square footage dimensions set forth are approximate.

5 EAST 111<sup>TH</sup> STREET  
EAST HARLEM, NYC | Between Madison and Fifth Avenues

COMMUNITY/COMMERCIAL FOR LEASE

FLOOR PLAN



JAMES FAMULARO  
President

DANE HARLOWE  
Director  
212.468.5966  
dharlowe@meridiancapital.com

NOAM AZIZ  
Director  
212.468.5984  
naziz@meridiancapital.com

CORY RYWALT  
Associate  
212.468.5973  
crywalt@meridiancapital.com



**MERIDIAN**  
RETAIL LEASING

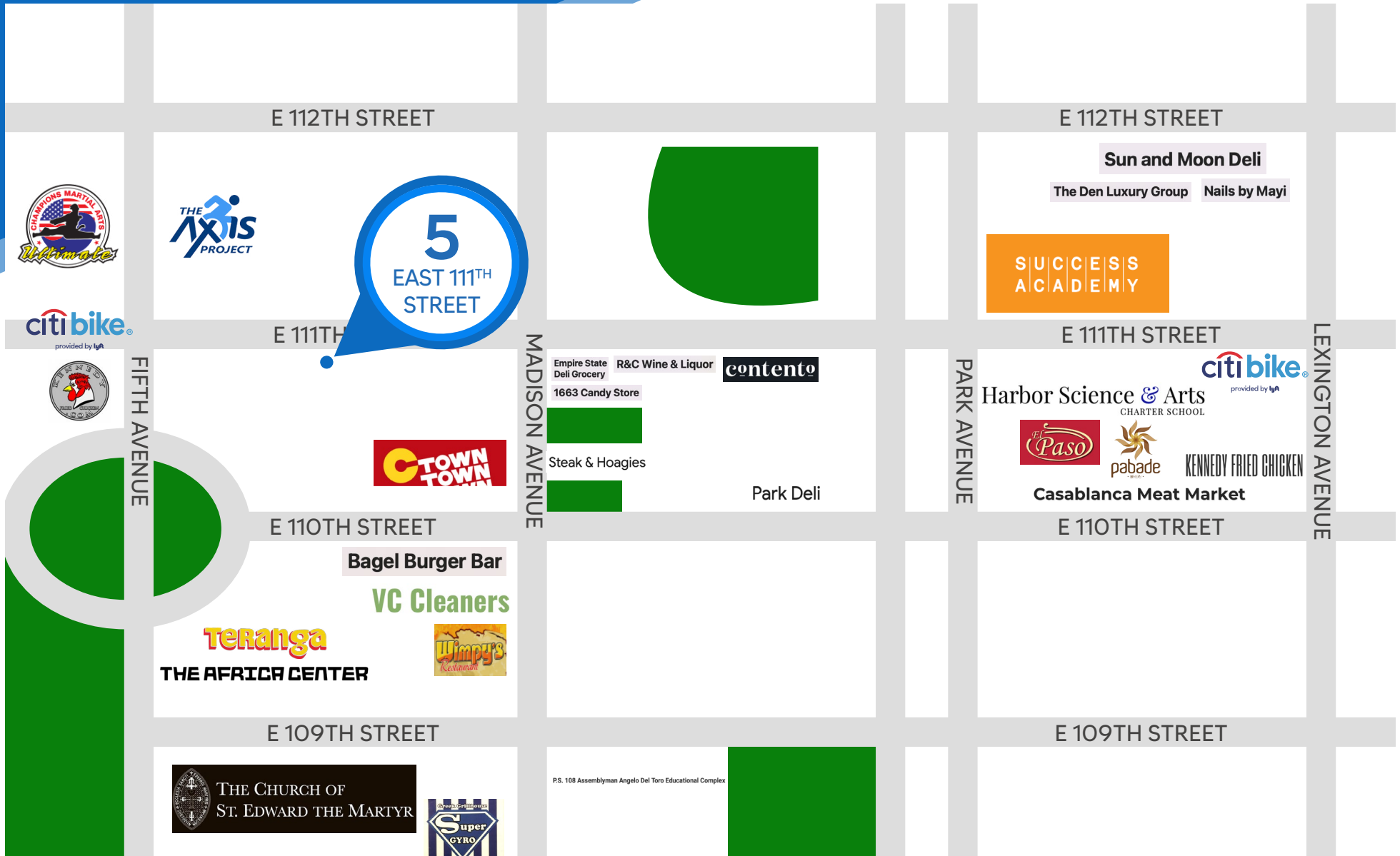
All information supplied is from sources deemed reliable and is furnished subject to errors, omissions, modifications, removal of the listing from sale or lease, and to any listing conditions, including the rates and manner of payment of commissions for particular offerings imposed by Meridian Capital Group. This information may include estimates and projections prepared by Meridian Capital Group with respect to future events, and these future events may or may not actually occur. Such estimates and projections reflect various assumptions concerning anticipated results. While Meridian Capital Group believes these assumptions are reasonable, there can be no assurance that any of these estimates and projections will be correct. Therefore, actual results may vary materially from these estimates and projections. Any square footage dimensions set forth are approximate.

## 5 EAST 111<sup>TH</sup> STREET

EAST HARLEM, NYC | Between Madison and Fifth Avenues

COMMUNITY/COMMERCIAL FOR LEASE

FLOOR PLAN



**JAMES FAMULARO**  
President

**DANE HARLOWE**  
Director  
212.468.5966  
dharlowe@meridiancapital.com

**NOAM AZIZ**  
Director  
212.468.5984  
naziz@meridiancapital.com

**CORY RYWALT**  
Associate  
212.468.5973  
crywalt@meridiancapital.com



**MERIDIAN**  
RETAIL LEASING

All information supplied is from sources deemed reliable and is furnished subject to errors, omissions, modifications, removal of the listing from sale or lease, and to any listing conditions, including the rates and manner of payment of commissions for particular offerings imposed by Meridian Capital Group. This information may include estimates and projections prepared by Meridian Capital Group with respect to future events, and these future events may or may not actually occur. Such estimates and projections reflect various assumptions concerning anticipated results. While Meridian Capital Group believes these assumptions are reasonable, there can be no assurance that any of these estimates and projections will be correct. Therefore, actual results may vary materially from these estimates and projections. Any square footage dimensions set forth are approximate.