

47-07 BROADWAY

Corner of Broadway & 47th Street, Astoria | Queens



47-07

BROADWAY ASTORIA, QUEENS

Corner of Broadway & 47th Street

RETAIL FOR LEASE

APPROXIMATE SIZE

Ground Floor: 4,900 SF
Lower Level: 15,500 SF

ASKING RENT

Ground Floor: \$70 PSF
Lower Level: \$35 PSF

POSSESSION

Q3 2026

TERM

5-20 Years

FRONTAGE

723 FT Wraparound

COMMENTS

- One of Queens' hottest new developments; a massive 19,000 SF city-block project
- Flexible layouts perfect for big-box retailers, F&B giants, or supermarkets at the base of a 90-unit residential building
- 45 parking spots on-site
- Only 15 minutes from LaGuardia Airport
- Cellar boasts 20-foot ceilings and floods with natural light
- The lower level has prime visibility from ground floor for maximum exposure

NEIGHBORS

Lovely Wine & Liquor • Taco City
Cuisine • Sweet Habit • Taste of China
• Fresh Pond Physical Therapy

TRANSPORTATION



JAMES FAMULARO
President

NOAM AZIZ
Director
212.468.5984
naziz@meridiancapital.com

STEPHEN LIGAMBI
Senior Associate
212.468.5985
sligambi@meridiancapital.com

CARSON SHAHRABANI
Associate
212.468.5927
cshahrabani@meridiancapital.com



MERIDIAN
RETAIL LEASING

All information supplied is from sources deemed reliable and is furnished subject to errors, omissions, modifications, removal of the listing from sale or lease, and to any listing conditions, including the rates and manner of payment of commissions for particular offerings imposed by Meridian Capital Group. This information may include estimates and projections prepared by Meridian Capital Group with respect to future events, and these future events may or may not actually occur. Such estimates and projections reflect various assumptions concerning anticipated results. While Meridian Capital Group believes these assumptions are reasonable, there can be no assurance that any of these estimates and projections will be correct. Therefore, actual results may vary materially from these estimates and projections. Any square footage dimensions set forth are approximate.

47-07 BROADWAY

ASTORIA, QUEENS | Corner of Broadway and 47th Street

RETAIL FOR LEASE



RENDERINGS

JAMES FAMULARO
President

NOAM AZIZ
Director
212.468.5984
naziz@meridiancapital.com

STEPHEN LIGAMBI
Senior Associate
212.468.5985
sligambi@meridiancapital.com

CARSON SHAHRABANI
Associate
212.468.5927
cshahrabani@meridiancapital.com



MERIDIAN
RETAIL LEASING

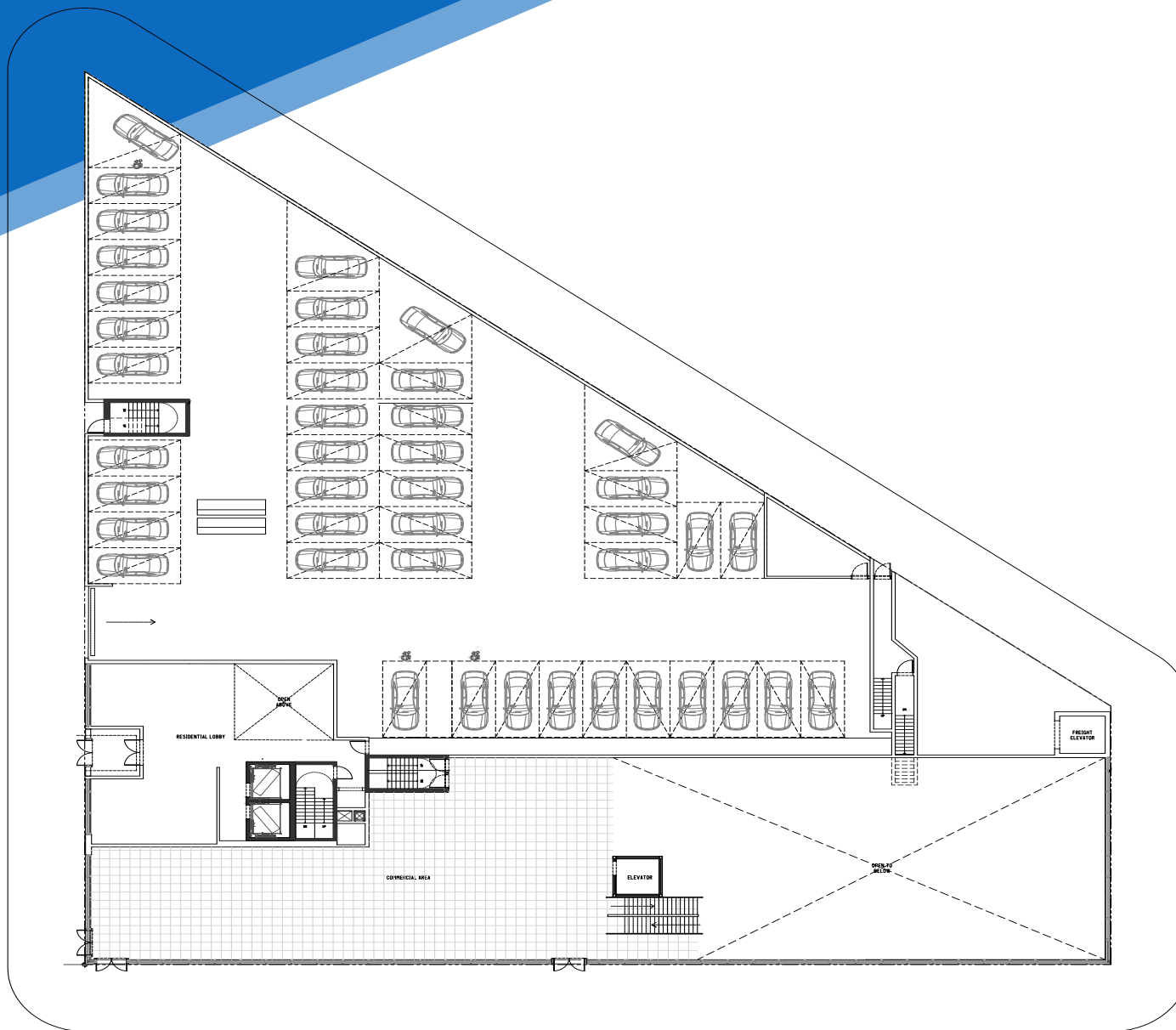
All information supplied is from sources deemed reliable and is furnished subject to errors, omissions, modifications, removal of the listing from sale or lease, and to any listing conditions, including the rates and manner of payment of commissions for particular offerings imposed by Meridian Capital Group. This information may include estimates and projections prepared by Meridian Capital Group with respect to future events, and these future events may or may not actually occur. Such estimates and projections reflect various assumptions concerning anticipated results. While Meridian Capital Group believes these assumptions are reasonable, there can be no assurance that any of these estimates and projections will be correct. Therefore, actual results may vary materially from these estimates and projections. Any square footage dimensions set forth are approximate.

47-07 BROADWAY

ASTORIA, QUEENS | Corner of Broadway and 47th Street

RETAIL FOR LEASE

FLOOR PLAN | GROUND FLOOR



JAMES FAMULARO
President

NOAM AZIZ
Director
212.468.5984
naziz@meridiancapital.com

STEPHEN LIGAMBI
Senior Associate
212.468.5985
sligambi@meridiancapital.com

CARSON SHAHRABANI
Associate
212.468.5927
cshahrabani@meridiancapital.com



MERIDIAN
RETAIL LEASING

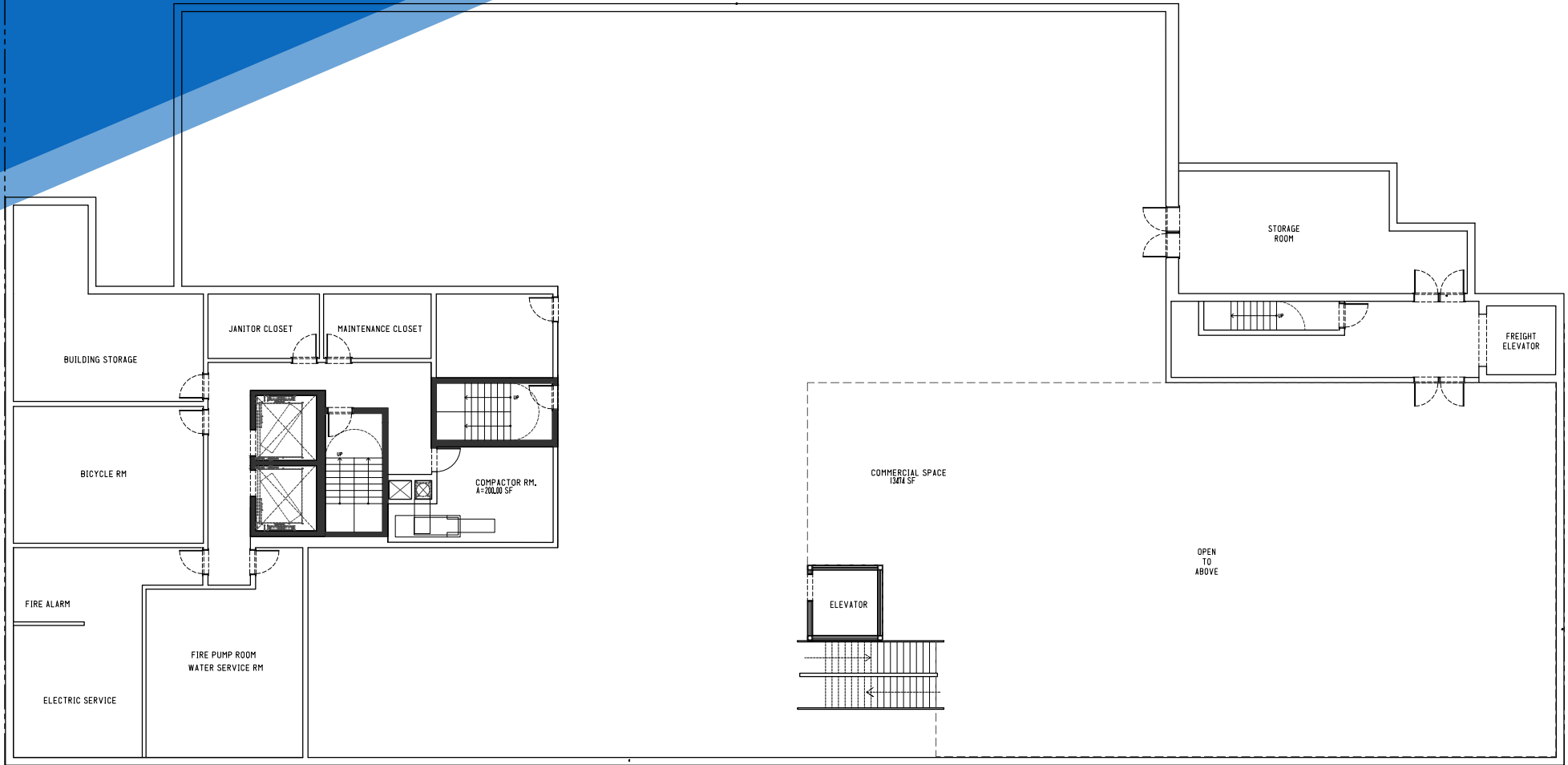
All information supplied is from sources deemed reliable and is furnished subject to errors, omissions, modifications, removal of the listing from sale or lease, and to any listing conditions, including the rates and manner of payment of commissions for particular offerings imposed by Meridian Capital Group. This information may include estimates and projections prepared by Meridian Capital Group with respect to future events, and these future events may or may not actually occur. Such estimates and projections reflect various assumptions concerning anticipated results. While Meridian Capital Group believes these assumptions are reasonable, there can be no assurance that any of these estimates and projections will be correct. Therefore, actual results may vary materially from these estimates and projections. Any square footage dimensions set forth are approximate.

47-07 BROADWAY

ASTORIA, QUEENS | Corner of Broadway and 47th Street

RETAIL FOR LEASE

FLOOR PLAN | LOWER LEVEL



JAMES FAMULARO
President

NOAM AZIZ
Director
212.468.5984
naziz@meridiancapital.com

STEPHEN LIGAMBI
Senior Associate
212.468.5985
sligambi@meridiancapital.com

CARSON SHAHRABANI
Associate
212.468.5927
cshahrabani@meridiancapital.com



MERIDIAN
RETAIL LEASING

All information supplied is from sources deemed reliable and is furnished subject to errors, omissions, modifications, removal of the listing from sale or lease, and to any listing conditions, including the rates and manner of payment of commissions for particular offerings imposed by Meridian Capital Group. This information may include estimates and projections prepared by Meridian Capital Group with respect to future events, and these future events may or may not actually occur. Such estimates and projections reflect various assumptions concerning anticipated results. While Meridian Capital Group believes these assumptions are reasonable, there can be no assurance that any of these estimates and projections will be correct. Therefore, actual results may vary materially from these estimates and projections. Any square footage dimensions set forth are approximate.

47-07 BROADWAY

ASTORIA, QUEENS | Corner of Broadway and 47th Street

RETAIL FOR LEASE

FLOOR PLAN | LOWER LEVEL



JAMES FAMULARO
President

NOAM AZIZ
Director
212.468.5984
naziz@meridiancapital.com

STEPHEN LIGAMBI
Senior Associate
212.468.5985
sligambi@meridiancapital.com

CARSON SHAHRABANI
Associate
212.468.5927
cshahrabani@meridiancapital.com



MERIDIAN
RETAIL LEASING

All information supplied is from sources deemed reliable and is furnished subject to errors, omissions, modifications, removal of the listing from sale or lease, and to any listing conditions, including the rates and manner of payment of commissions for particular offerings imposed by Meridian Capital Group. This information may include estimates and projections prepared by Meridian Capital Group with respect to future events, and these future events may or may not actually occur. Such estimates and projections reflect various assumptions concerning anticipated results. While Meridian Capital Group believes these assumptions are reasonable, there can be no assurance that any of these estimates and projections will be correct. Therefore, actual results may vary materially from these estimates and projections. Any square footage dimensions set forth are approximate.