

31-33

SECOND AVENUE

EAST VILLAGE, NYC

Between East 1st & 2nd Streets

RETAIL FOR LEASE

APPROXIMATE SIZE

Ground Floor: 3,500 SF
Lower Level: 3,000 SF

ASKING RENT

Upon Request

POSSESSION

Immediate

TERM

Negotiable

FRONTAGE

30 FT

COMMENTS

- Updated electrical, plumbing, and HVAC
- Usable lower level
- Recently renovated exterior and interior
- Gas in place; venting possible
- Divisions possible
- Great visibility on a high foot traffic corridor

NEIGHBORS

Sauced • Gemma • The Bowery Hotel • Bar
Primi • Kissaki • The Wren • Rosie's • Sweet
Linda • Win Son • Blue Ribbon Fried Chicken •
Kabasua • Bowery Meat Company • Baar Baar

TRANSPORTATION



PROPERTY INFORMATION

ELLIOT WYGODA

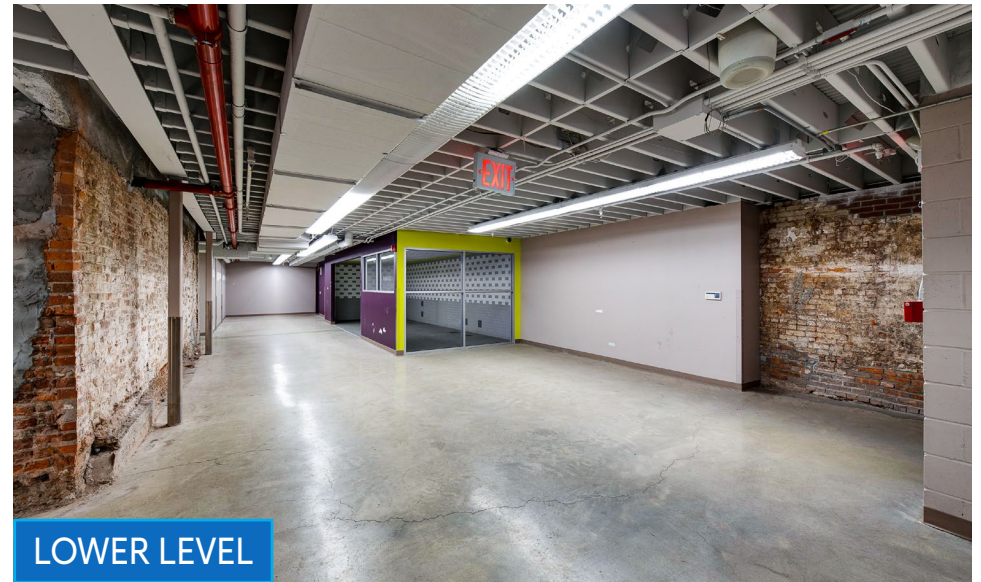
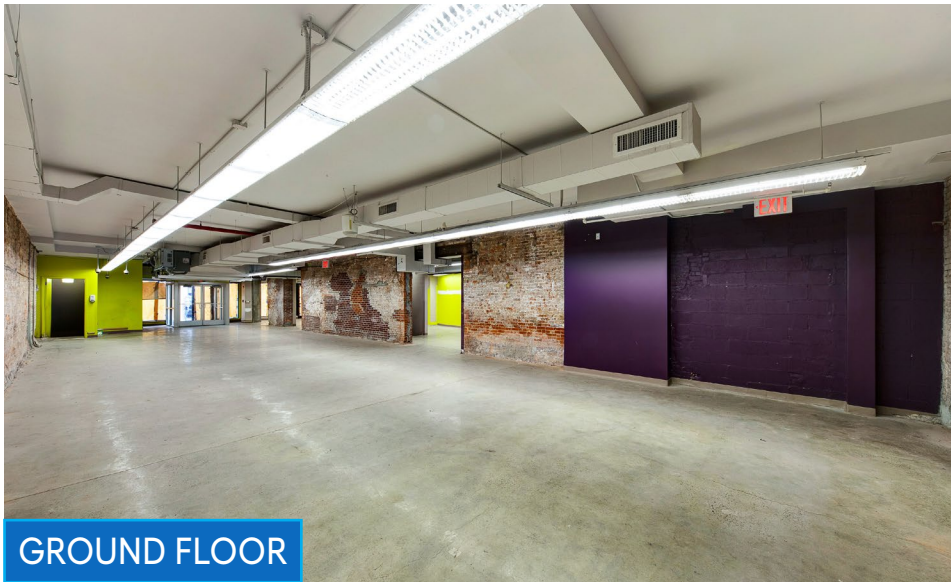
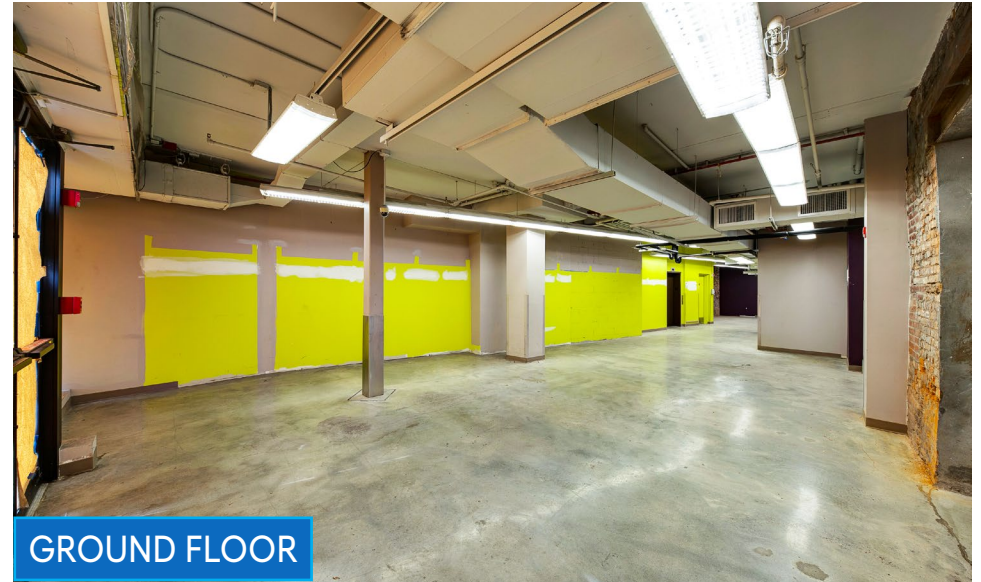
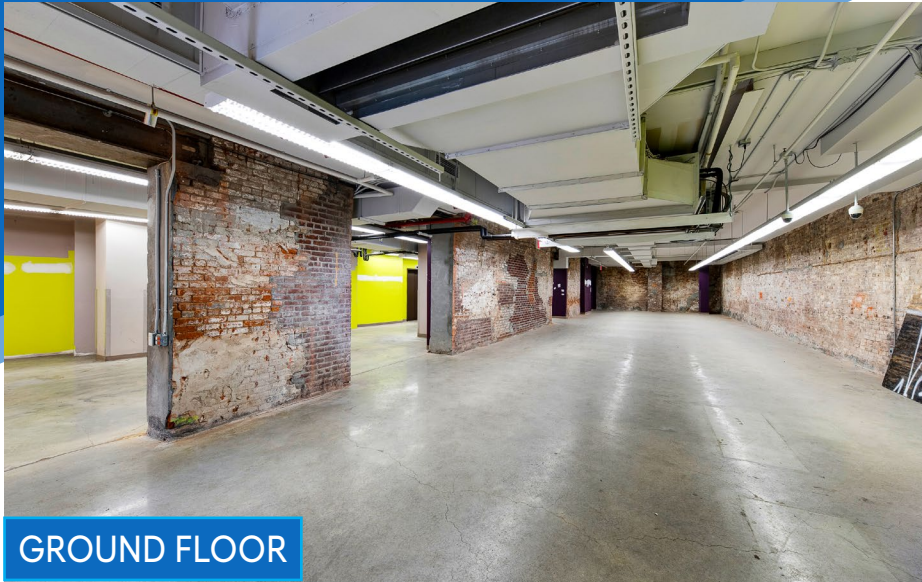
Director
212.468.5968
ewygoda@meridiancapital.com

BEN BIBERAJ

Senior Director
703.434.1461
bbiberaj@meridiancapital.com



All information supplied is from sources deemed reliable and is furnished subject to errors, omissions, modifications, removal of the listing from sale or lease, and to any listing conditions, including the rates and manner of payment of commissions for particular offerings imposed by Meridian Capital Group. This information may include estimates and projections prepared by Meridian Capital Group with respect to future events, and these future events may or may not actually occur. Such estimates and projections reflect various assumptions concerning anticipated results. While Meridian Capital Group believes these assumptions are reasonable, there can be no assurance that any of these estimates and projections will be correct. Therefore, actual results may vary materially from these estimates and projections. Any square footage dimensions set forth are approximate.



INTERIOR

ELLIOT WYGODA
Director
212.468.5968
ewygoda@meridiancapital.com

BEN BIBERAJ
Senior Director
703.434.1461
bbiberaj@meridiancapital.com

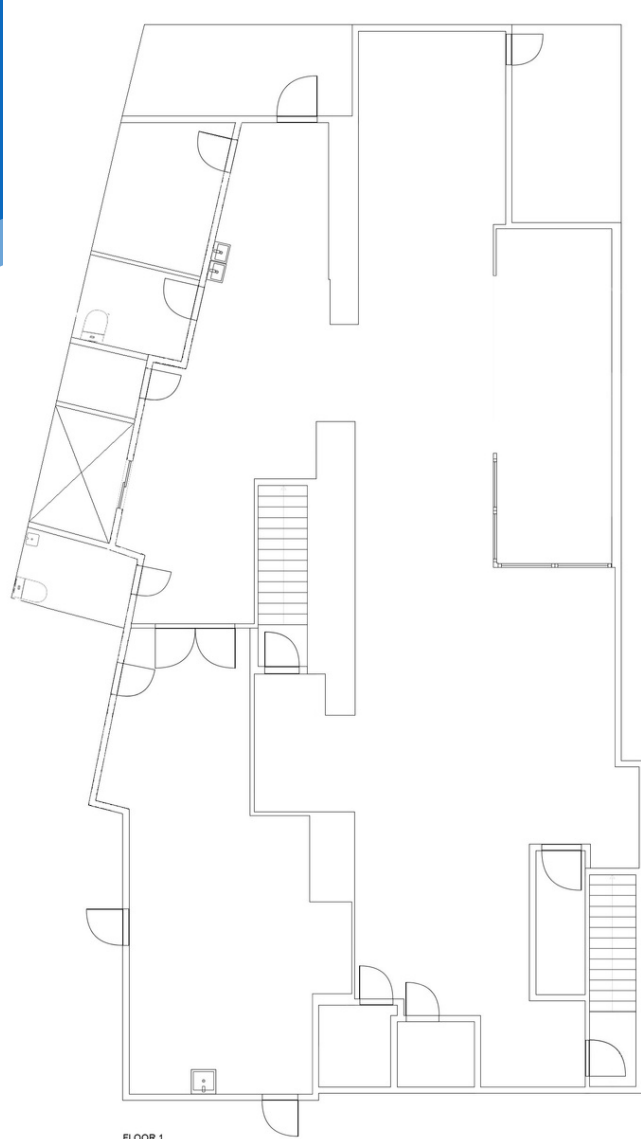


31-33 SECOND AVENUE

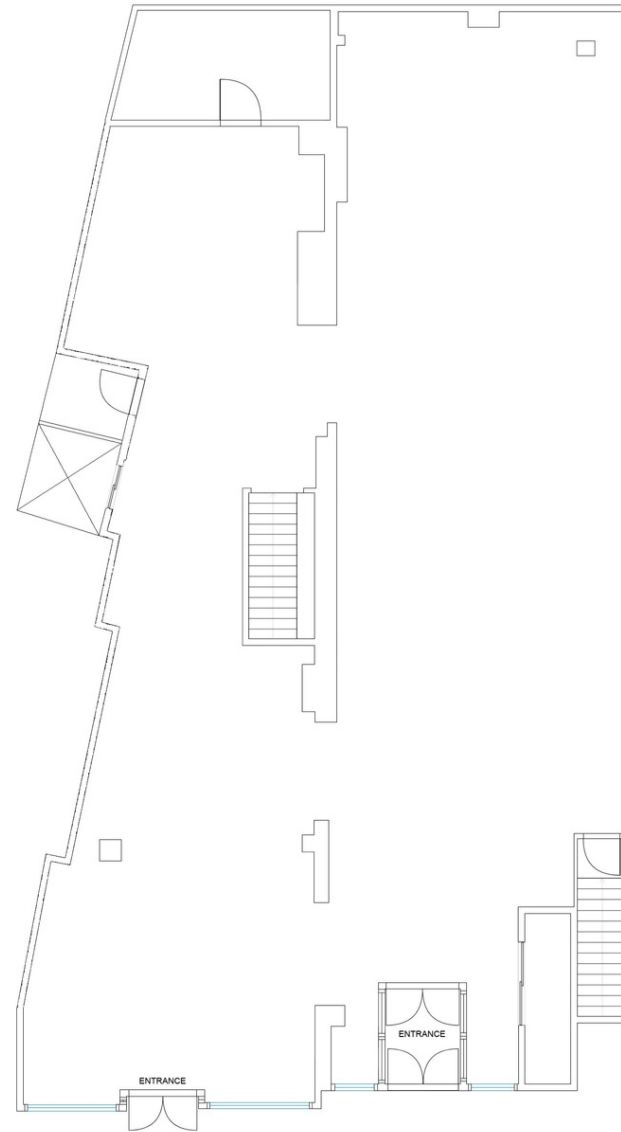
EAST VILLAGE, NYC | Between East 1st and 2nd Streets

RETAIL FOR LEASE

FLOOR PLANS



GROUND FLOOR



LOWER LEVEL

ELLIOT WYGODA

Director
212.468.5968
ewygoda@meridiancapital.com

BEN BIBERAJ

Senior Director
703.434.1461
bbiberaj@meridiancapital.com



All information supplied is from sources deemed reliable and is furnished subject to errors, omissions, modifications, removal of the listing from sale or lease, and to any listing conditions, including the rates and manner of payment of commissions for particular offerings imposed by Meridian Capital Group. This information may include estimates and projections prepared by Meridian Capital Group with respect to future events, and these future events may or may not actually occur. Such estimates and projections reflect various assumptions concerning anticipated results. While Meridian Capital Group believes these assumptions are reasonable, there can be no assurance that any of these estimates and projections will be correct. Therefore, actual results may vary materially from these estimates and projections. Any square footage dimensions set forth are approximate.



NEIGHBORS

ELLIOT WYGODA
Director
212.468.5968
ewygoda@meridiancapital.com

BEN BIBERAJ
Senior Director
703.434.1461
bbiberaj@meridiancapital.com



All information supplied is from sources deemed reliable and is furnished subject to errors, omissions, modifications, removal of the listing from sale or lease, and to any listing conditions, including the rates and manner of payment of commissions for particular offerings imposed by Meridian Capital Group. This information may include estimates and projections prepared by Meridian Capital Group with respect to future events, and these future events may or may not actually occur. Such estimates and projections reflect various assumptions concerning anticipated results. While Meridian Capital Group believes these assumptions are reasonable, there can be no assurance that any of these estimates and projections will be correct. Therefore, actual results may vary materially from these estimates and projections. Any square footage dimensions set forth are approximate.