

275

CANAL STREET SOHO, NYC

Between Lafayette Street & Broadway

RETAIL/OFFICE FOR LEASE

APPROXIMATE SIZE

2nd Floor: 3,000 SF

ASKING RENT

\$13,750/Month

POSSESSION

Immediate

TERM

Negotiable

COMMENTS

- Fully built-out office space with elevator access
- Plenty of natural light
- Fantastic visibility on busy Canal Street
- Steps from 7 subway lines
- All uses considered

NEIGHBORS

Nine Moons • Le Coucou • Kung Fu Tea • Añejo
Tribeca • Foundrae • Teddy Blade • With Jean •
Sea • La Colombe • The Ness • Maison Margiela •
260 Sample Sale • Blue Bottle Coffee • Au Cheval

TRANSPORTATION

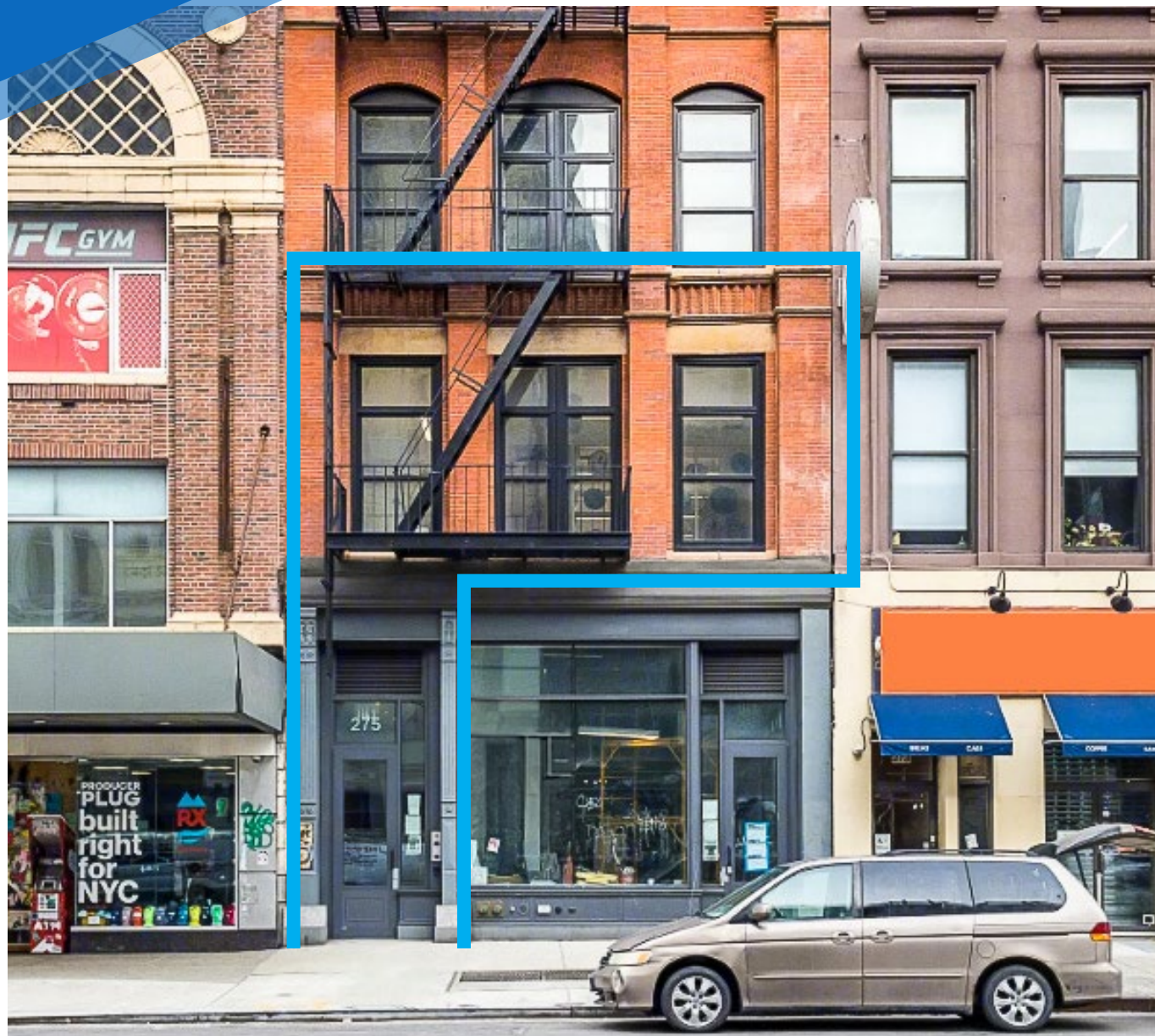
N Q R W 6 J Z

JAMES FAMULARO

President
646.658.7373
jfamularo@meridiancapital.com

BOBBY ORTENSE

Director
212.468.5953
bortense@meridiancapital.com



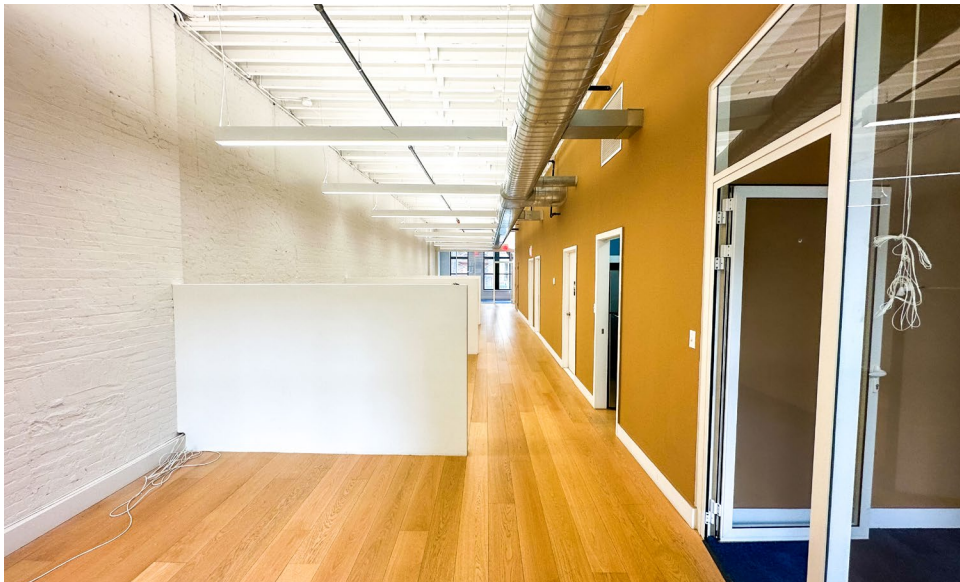
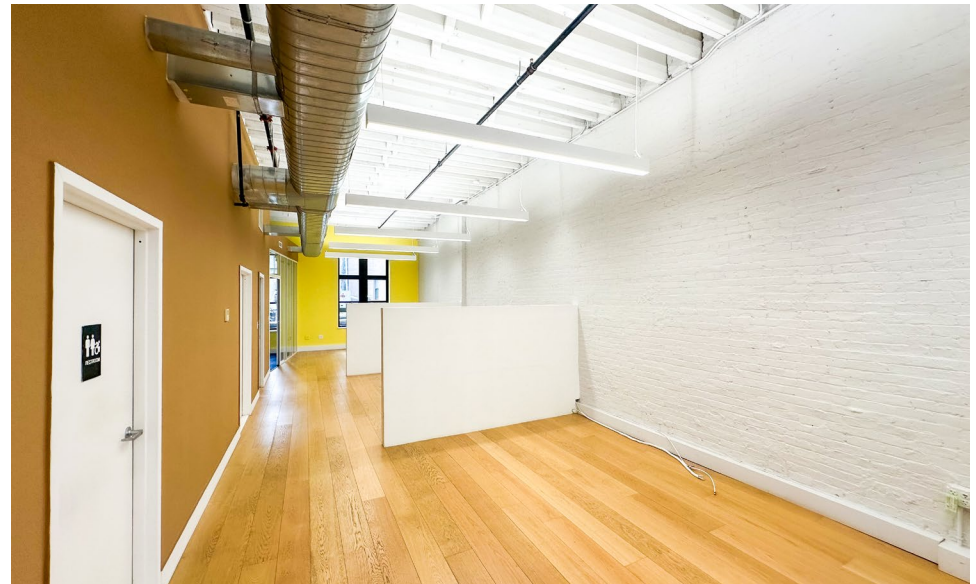
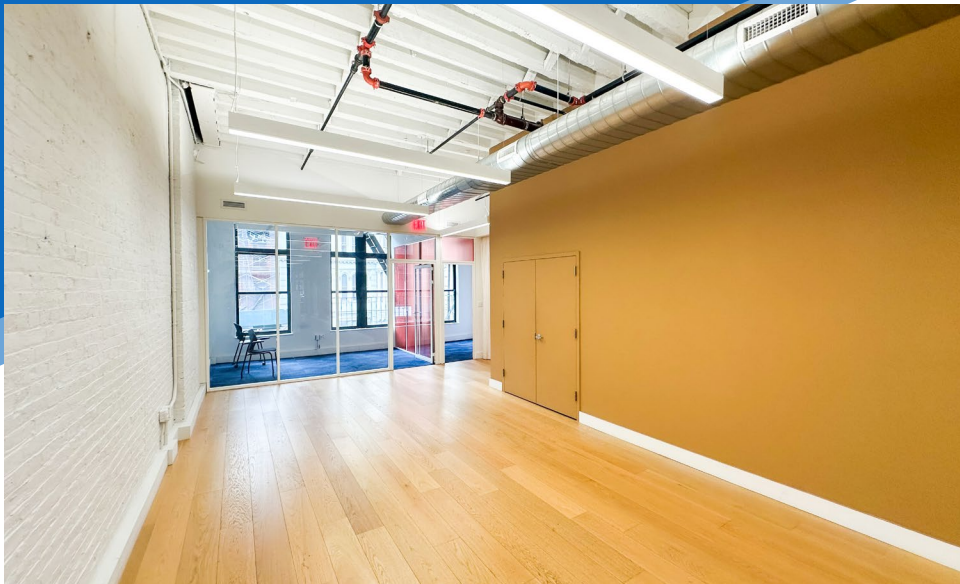
MERIDIAN
RETAIL LEASING

All information supplied is from sources deemed reliable and is furnished subject to errors, omissions, modifications, removal of the listing from sale or lease, and to any listing conditions, including the rates and manner of payment of commissions for particular offerings imposed by Meridian Capital Group. This information may include estimates and projections prepared by Meridian Capital Group with respect to future events, and these future events may or may not actually occur. Such estimates and projections reflect various assumptions concerning anticipated results. While Meridian Capital Group believes these assumptions are reasonable, there can be no assurance that any of these estimates and projections will be correct. Therefore, actual results may vary materially from these estimates and projections. Any square footage dimensions set forth are approximate.

275 CANAL STREET

SOHO, NYC | Between Lafayette Street and Broadway

RETAIL/OFFICE FOR LEASE



INTERIOR

JAMES FAMULARO

President
646.658.7373
jfamularo@meridiancapital.com

BOBBY ORTENSE

Director
212.468.5953
bortense@meridiancapital.com



MERIDIAN
RETAIL LEASING

All information supplied is from sources deemed reliable and is furnished subject to errors, omissions, modifications, removal of the listing from sale or lease, and to any listing conditions, including the rates and manner of payment of commissions for particular offerings imposed by Meridian Capital Group. This information may include estimates and projections prepared by Meridian Capital Group with respect to future events, and these future events may or may not actually occur. Such estimates and projections reflect various assumptions concerning anticipated results. While Meridian Capital Group believes these assumptions are reasonable, there can be no assurance that any of these estimates and projections will be correct. Therefore, actual results may vary materially from these estimates and projections. Any square footage dimensions set forth are approximate.

275 CANAL STREET

SOHO, NYC | Between Lafayette Street and Broadway

RETAIL/OFFICE FOR LEASE

FLOOR PLAN



JAMES FAMULARO

President
646.658.7373
jfamularo@meridiancapital.com

BOBBY ORTENSE

Director
212.468.5953
bortense@meridiancapital.com



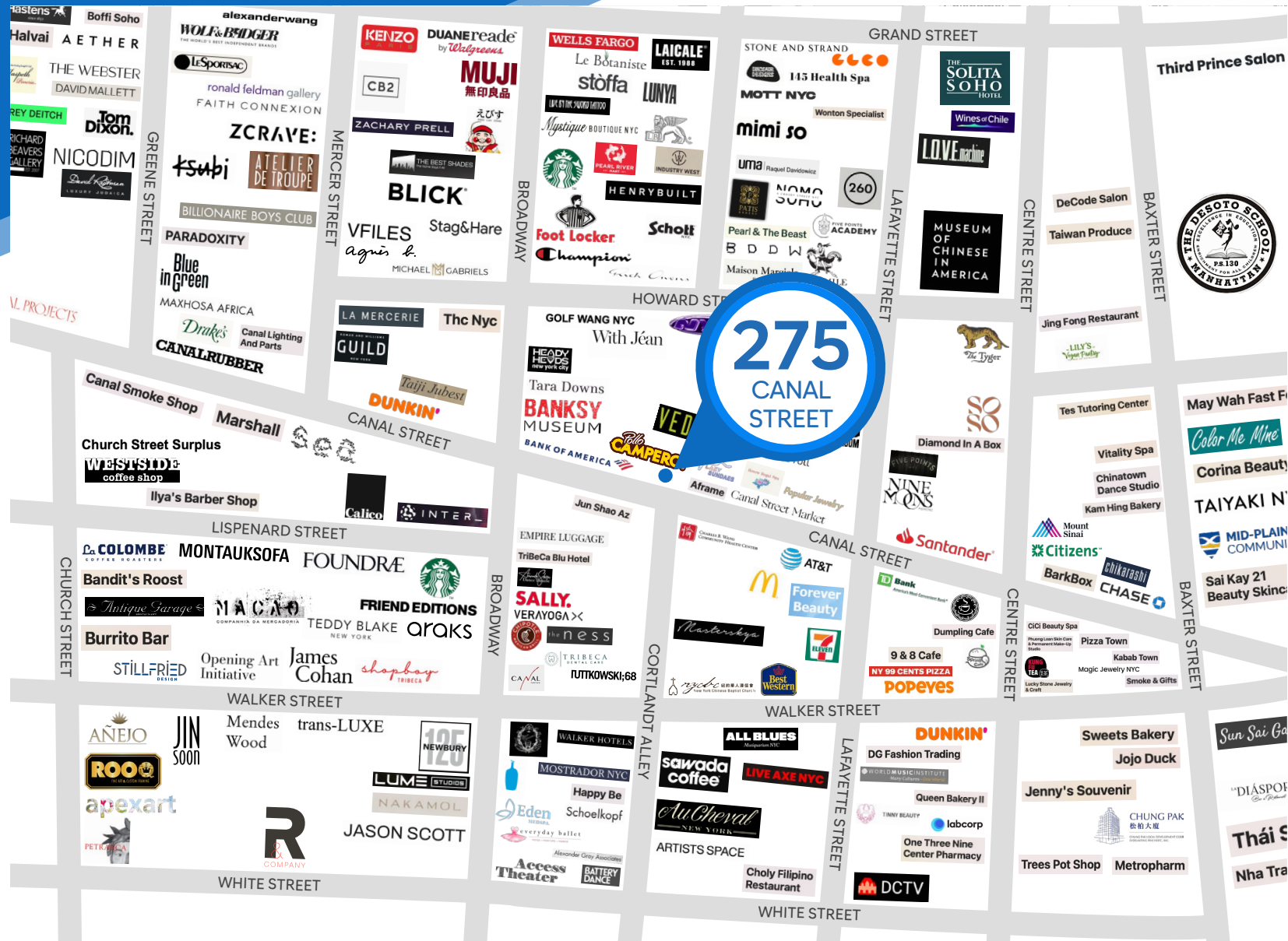
MERIDIAN
RETAIL LEASING

All information supplied is from sources deemed reliable and is furnished subject to errors, omissions, modifications, removal of the listing from sale or lease, and to any listing conditions, including the rates and manner of payment of commissions for particular offerings imposed by Meridian Capital Group. This information may include estimates and projections prepared by Meridian Capital Group with respect to future events, and these future events may or may not actually occur. Such estimates and projections reflect various assumptions concerning anticipated results. While Meridian Capital Group believes these assumptions are reasonable, there can be no assurance that any of these estimates and projections will be correct. Therefore, actual results may vary materially from these estimates and projections. Any square footage dimensions set forth are approximate.

275 CANAL STREET

SOHO, NYC | Between Lafayette Street and Broadway

RETAIL/OFFICE FOR LEASE



NEIGHBORS

JAMES FAMULARO

President
646.658.7373
jfamularo@meridiancapital.com

BOBBY ORTENSE

Director
212.468.5953
bortense@meridiancapital.com



MERIDIAN
RETAIL LEASING

All information supplied is from sources deemed reliable and is furnished subject to errors, omissions, modifications, removal of the listing from sale or lease, and to any listing conditions, including the rates and manner of payment of commissions for particular offerings imposed by Meridian Capital Group. This information may include estimates and projections prepared by Meridian Capital Group with respect to future events, and these future events may or may not actually occur. Such estimates and projections reflect various assumptions concerning anticipated results. While Meridian Capital Group believes these assumptions are reasonable, there can be no assurance that any of these estimates and projections will be correct. Therefore, actual results may vary materially from these estimates and projections. Any square footage dimensions set forth are approximate.