

# 27

## WHITEHALL STREET FINANCIAL DISTRICT, NYC

Corner of Whitehall & Bridge Street

RESTAURANT FOR LEASE

### APPROXIMATE SIZE

Ground Floor: 2,000 SF  
Second Floor: 1,850 SF  
Lower Level: 2,200 SF

### ASKING RENT

\$35,000/Month

### POSSESSION

Arranged

### TERM

Negotiable

### FRONTAGE

100 FT Wraparound

### COMMENTS

- Prominent corner in the heart of Financial District's office corridor
- Turn-key restaurant with vent and gas
- Kitchens in both the ground floor and lower level
- Multiple walk-ins in the lower level
- Currently "Flavors Café"
- No key-money

### NEIGHBORS

Fraunces Tavern • The Dead Rabbit • Springbone Kitchen • JP Morgan • 3 Times • The White Horse Tavern • Potbelly • Urban Space • Café Grumpy • Broadstone Bar & Kitchen • Havana Social • Tacombi • Mad Dogs • Underdog

### TRANSPORTATION

1 2 R W 4 5 A C E J Z

### JAMES FAMULARO

President

### NOAM AZIZ

Director  
212.468.5984  
naziz@meridiancapital.com

### CARSON SHAHRABANI

Associate  
212.468.5927  
cshahrabani@meridiancapital.com



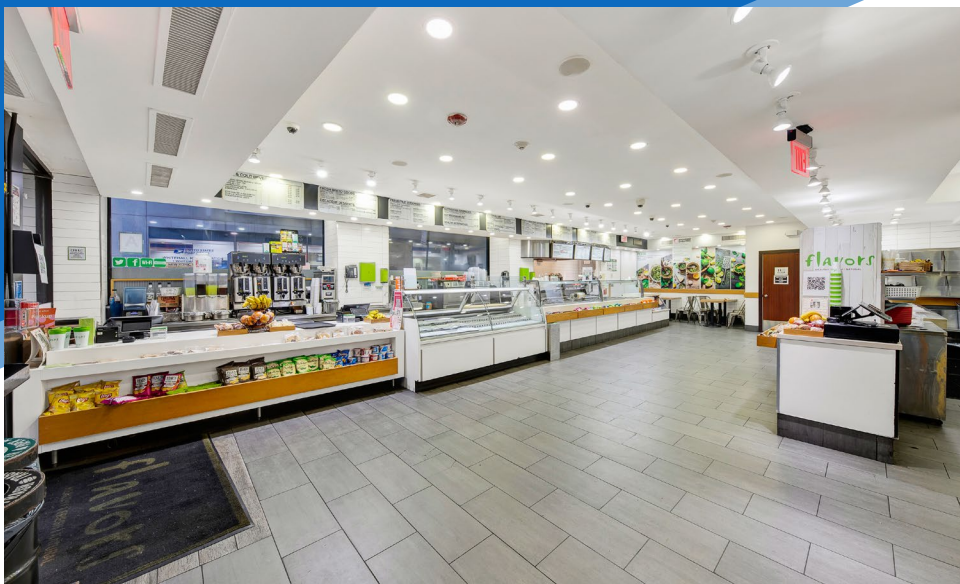
**MERIDIAN**  
RETAIL LEASING

All information supplied is from sources deemed reliable and is furnished subject to errors, omissions, modifications, removal of the listing from sale or lease, and to any listing conditions, including the rates and manner of payment of commissions for particular offerings imposed by Meridian Capital Group. This information may include estimates and projections prepared by Meridian Capital Group with respect to future events, and these future events may or may not actually occur. Such estimates and projections reflect various assumptions concerning anticipated results. While Meridian Capital Group believes these assumptions are reasonable, there can be no assurance that any of these estimates and projections will be correct. Therefore, actual results may vary materially from these estimates and projections. Any square footage dimensions set forth are approximate.



27 WHITEHALL STREET  
FINANCIAL DISTRICT, NYC | Corner of Whitehall & Bridge Street

RESTAURANT FOR LEASE



INTERIOR | GROUND FLOOR

JAMES FAMULARO  
President

NOAM AZIZ  
Director  
212.468.5984  
naziz@meridiancapital.com

CARSON SHAHRABANI  
Associate  
212.468.5927  
cshahrabani@meridiancapital.com



**MERIDIAN**  
RETAIL LEASING

All information supplied is from sources deemed reliable and is furnished subject to errors, omissions, modifications, removal of the listing from sale or lease, and to any listing conditions, including the rates and manner of payment of commissions for particular offerings imposed by Meridian Capital Group. This information may include estimates and projections prepared by Meridian Capital Group with respect to future events, and these future events may or may not actually occur. Such estimates and projections reflect various assumptions concerning anticipated results. While Meridian Capital Group believes these assumptions are reasonable, there can be no assurance that any of these estimates and projections will be correct. Therefore, actual results may vary materially from these estimates and projections. Any square footage dimensions set forth are approximate.



27 WHITEHALL STREET  
FINANCIAL DISTRICT, NYC | Corner of Whitehall & Bridge Street

RESTAURANT FOR LEASE



INTERIOR | SECOND FLOOR

JAMES FAMULARO  
President

NOAM AZIZ  
Director  
212.468.5984  
naziz@meridiancapital.com

CARSON SHAHRABANI  
Associate  
212.468.5927  
cshahrabani@meridiancapital.com



**MERIDIAN**  
RETAIL LEASING

All information supplied is from sources deemed reliable and is furnished subject to errors, omissions, modifications, removal of the listing from sale or lease, and to any listing conditions, including the rates and manner of payment of commissions for particular offerings imposed by Meridian Capital Group. This information may include estimates and projections prepared by Meridian Capital Group with respect to future events, and these future events may or may not actually occur. Such estimates and projections reflect various assumptions concerning anticipated results. While Meridian Capital Group believes these assumptions are reasonable, there can be no assurance that any of these estimates and projections will be correct. Therefore, actual results may vary materially from these estimates and projections. Any square footage dimensions set forth are approximate.



27 WHITEHALL STREET  
FINANCIAL DISTRICT, NYC | Corner of Whitehall & Bridge Street

RESTAURANT FOR LEASE



INTERIOR | LOWER LEVEL

JAMES FAMULARO  
President

NOAM AZIZ  
Director  
212.468.5984  
naziz@meridiancapital.com

CARSON SHAHRABANI  
Associate  
212.468.5927  
cshahrabani@meridiancapital.com



**MERIDIAN**  
RETAIL LEASING

All information supplied is from sources deemed reliable and is furnished subject to errors, omissions, modifications, removal of the listing from sale or lease, and to any listing conditions, including the rates and manner of payment of commissions for particular offerings imposed by Meridian Capital Group. This information may include estimates and projections prepared by Meridian Capital Group with respect to future events, and these future events may or may not actually occur. Such estimates and projections reflect various assumptions concerning anticipated results. While Meridian Capital Group believes these assumptions are reasonable, there can be no assurance that any of these estimates and projections will be correct. Therefore, actual results may vary materially from these estimates and projections. Any square footage dimensions set forth are approximate.



## 27 WHITEHALL STREET

FINANCIAL DISTRICT, NYC | Corner of Whitehall & Bridge Street

RESTAURANT FOR LEASE

NEIGHBORS



JAMES FAMULARO  
President

NOAM AZIZ  
Director  
212.468.5984  
naziz@meridiancapital.com

CARSON SHAHRABANI  
Associate  
212.468.5927  
cshahrabani@meridiancapital.com



**MERIDIAN**  
RETAIL LEASING

All information supplied is from sources deemed reliable and is furnished subject to errors, omissions, modifications, removal of the listing from sale or lease, and to any listing conditions, including the rates and manner of payment of commissions for particular offerings imposed by Meridian Capital Group. This information may include estimates and projections prepared by Meridian Capital Group with respect to future events, and these future events may or may not actually occur. Such estimates and projections reflect various assumptions concerning anticipated results. While Meridian Capital Group believes these assumptions are reasonable, there can be no assurance that any of these estimates and projections will be correct. Therefore, actual results may vary materially from these estimates and projections. Any square footage dimensions set forth are approximate.