

1900

LEXINGTON AVENUE

EAST HARLEM, NYC

Corner of Lexington Avenue & East 119th Street

RETAIL FOR LEASE

APPROXIMATE SIZE

Space A: 1,192 SF

Space B: 1,735 SF

Space C: 1,680 SF

Total: 4,607 SF

ASKING RENT

\$60 PSF

POSSESSION

Immediate

TERM

5-10 Years

FRONTAGE

122 FT on Lexington Avenue

40 FT on East 119th Street

COMMENTS

- Currently divided into 3 spaces
- Space A: Double-height ceilings/frontage
- Space B: Currently "Assembly of Pentecostal Church"
- Space C: Professional build-out with offices
- High foot traffic corridor
- Spaces can be partially or entirely combined
- Close proximity to transit
- All uses considered

NEIGHBORS

PS 007 Samuel Stern School • Hunter East Harlem Gallery • Rosticeria Y Tortilleria Lupita • Fajac Luxury • Sofia's Nail Salon • Salir Bella Beauty Salon

TRANSPORTATION

6

JAMES FAMULARO

President

DANE HARLOWE

Director

212.468.5966

dharlowe@meridiancapital.com

NOAM AZIZ

Director

212.468.5984

naziz@meridiancapital.com

NATHAN SHABOT

Associate

212.468.5933

nshabot@meridiancapital.com



MERIDIAN
RETAIL LEASING

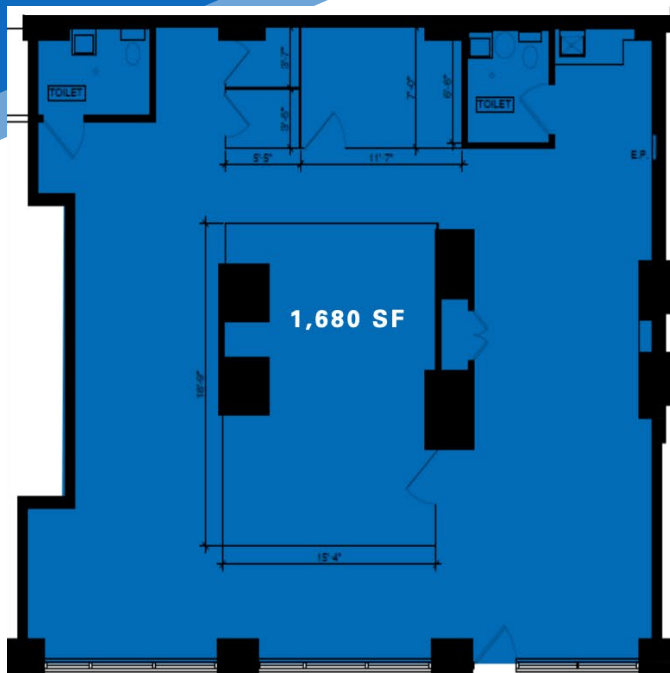
All information supplied is from sources deemed reliable and is furnished subject to errors, omissions, modifications, removal of the listing from sale or lease, and to any listing conditions, including the rates and manner of payment of commissions for particular offerings imposed by Meridian Capital Group. This information may include estimates and projections prepared by Meridian Capital Group with respect to future events, and these future events may or may not actually occur. Such estimates and projections reflect various assumptions concerning anticipated results. While Meridian Capital Group believes these assumptions are reasonable, there can be no assurance that any of these estimates and projections will be correct. Therefore, actual results may vary materially from these estimates and projections. Any square footage dimensions set forth are approximate.

1900 LEXINGTON AVENUE

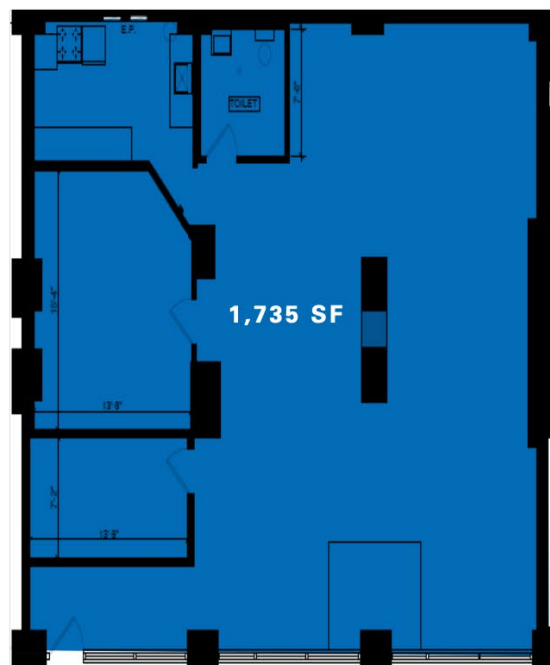
EAST HARLEM, NYC | Corner of Lexington Avenue and East 117th Street

RETAIL FOR LEASE

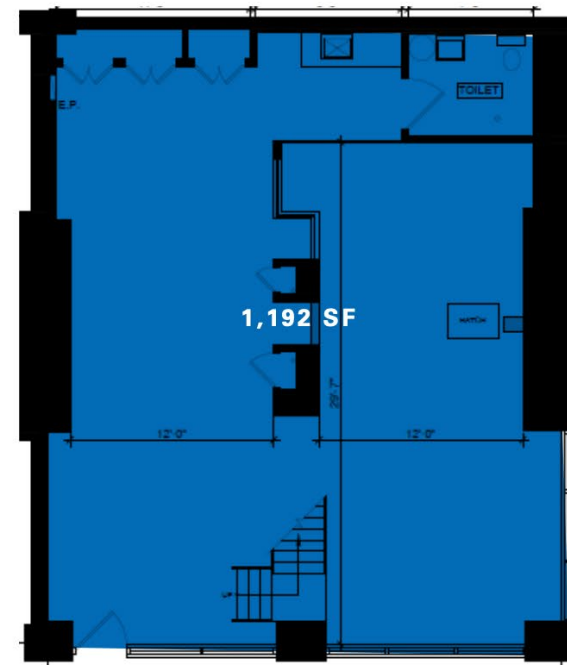
FLOOR PLANS



SPACE C



SPACE B



SPACE A

EAST 119TH STREET

JAMES FAMULARO
President

DANE HARLOWE
Director
212.468.5966
dharlowe@meridiancapital.com

NOAM AZIZ
Director
212.468.5984
naziz@meridiancapital.com

NATHAN SHABOT
Associate
212.468.5933
nshabot@meridiancapital.com



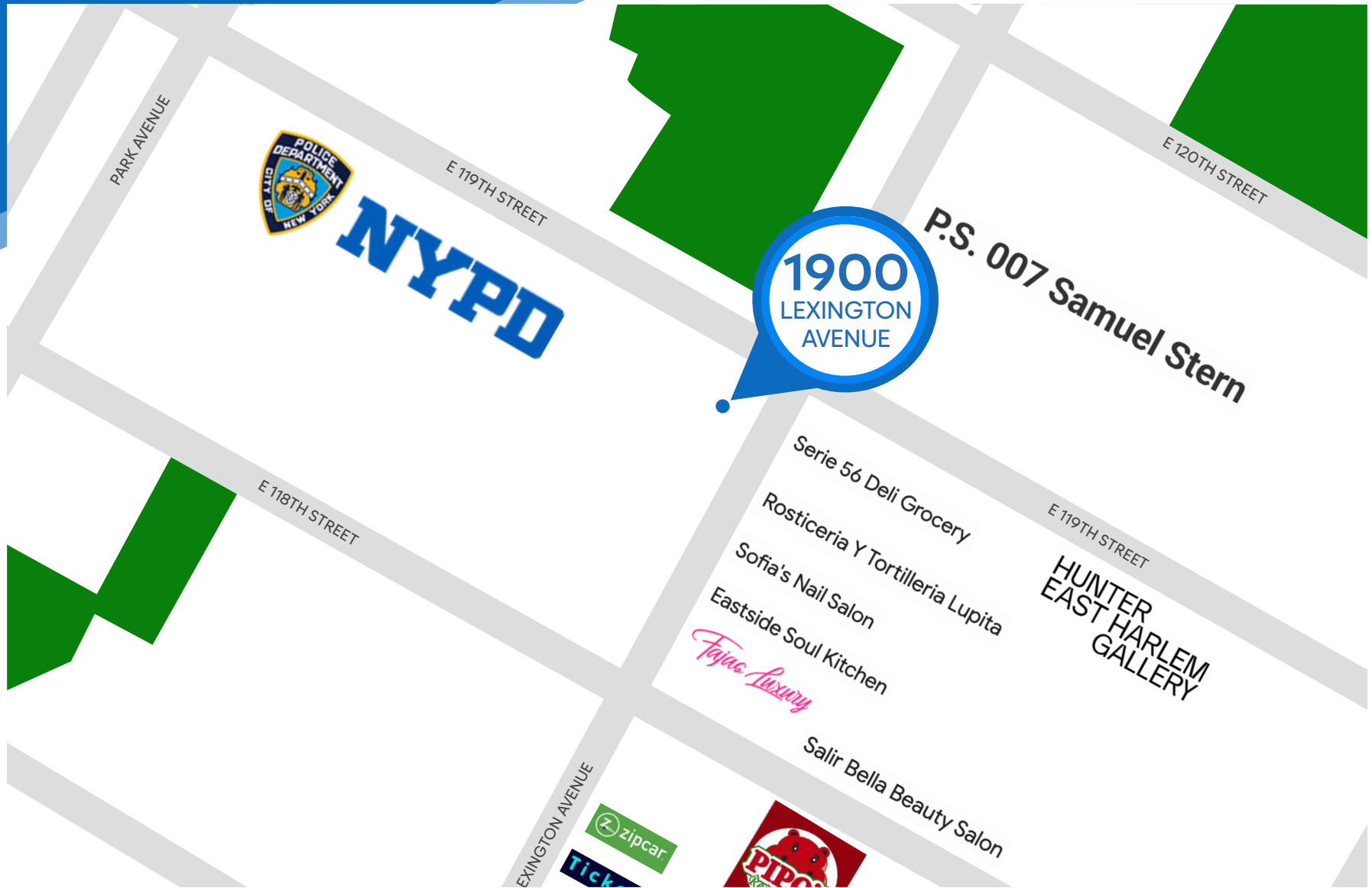
MERIDIAN
RETAIL LEASING

All information supplied is from sources deemed reliable and is furnished subject to errors, omissions, modifications, removal of the listing from sale or lease, and to any listing conditions, including the rates and manner of payment of commissions for particular offerings imposed by Meridian Capital Group. This information may include estimates and projections prepared by Meridian Capital Group with respect to future events, and these future events may or may not actually occur. Such estimates and projections reflect various assumptions concerning anticipated results. While Meridian Capital Group believes these assumptions are reasonable, there can be no assurance that any of these estimates and projections will be correct. Therefore, actual results may vary materially from these estimates and projections. Any square footage dimensions set forth are approximate.

1900 LEXINGTON AVENUE

EAST HARLEM, NYC | Corner of Lexington Avenue and East 117th Street

RETAIL FOR LEASE



NEIGHBORS

JAMES FAMULARO
President

DANE HARLOWE
Director
212.468.5966
dharlowe@meridiancapital.com

NOAM AZIZ
Director
212.468.5984
naziz@meridiancapital.com

NATHAN SHABOT
Associate
212.468.5933
nshabot@meridiancapital.com



MERIDIAN
RETAIL LEASING

All information supplied is from sources deemed reliable and is furnished subject to errors, omissions, modifications, removal of the listing from sale or lease, and to any listing conditions, including the rates and manner of payment of commissions for particular offerings imposed by Meridian Capital Group. This information may include estimates and projections prepared by Meridian Capital Group with respect to future events, and these future events may or may not actually occur. Such estimates and projections reflect various assumptions concerning anticipated results. While Meridian Capital Group believes these assumptions are reasonable, there can be no assurance that any of these estimates and projections will be correct. Therefore, actual results may vary materially from these estimates and projections. Any square footage dimensions set forth are approximate.