

137 ORCHARD STREET

A photograph of the entrance to a building at 137 Orchard Street. The entrance features large glass doors and windows, revealing a brightly lit interior. The building's facade is dark, and the entrance is framed by a curved structure. A small sign with the number '137' is visible on the ground near the entrance.

MERIDIAN
RETAIL LEASING

136 ALLEN STREET

A photograph of the exterior of a building at 136 Allen Street. The building features a brick facade with a large, colorful mural of a blue and yellow lizard. The entrance is a glass door, and there are various signs and graffiti on the wall. A parking sign is visible on the left side of the image.

137

ORCHARD STREET LOWER EAST SIDE, NYC

Between Rivington & Delancey Streets

RETAIL/RESTAURANT FOR LEASE

APPROXIMATE SIZE

Ground Floor: 2,350 SF
Basement: 1,500 SF

ASKING RENT

Upon Request

POSSESSION

Immediate

TERM

Negotiable

FRONTAGE

25 FT on Orchard Street
22 FT on Allen Street

COMMENTS

- Unique block-through retail opportunity in the heart of the Lower East Side
- Logical divisions considered
- Landlord to deliver space in clean white-box condition with new store front
- Space can be vented for qualified restaurant users
- Rectangular column-free space
- Amazing F&B and retail co-tenancy

NEIGHBORS

Russ & Daughters • Ludlow House •
Reformation • Frankie Shop • Okiburu House
of Tsukemen • Tenement Museum • Good
Thanks • Bon Bon • Scarr's Pizza • Dudley's

TRANSPORTATION

B D F M J Z



PROPERTY INFORMATION

JAMES FAMULARO

President

GARRETT KELLY

Director

212.468.5939

gkelly@meridiancapital.com

NOAM AZIZ

Director

212.468.5984

naziz@meridiancapital.com

CARSON SHAHRABANI

Associate

212.468.5927

cshahrabani@meridiancapital.com



MERIDIAN
RETAIL LEASING

All information supplied is from sources deemed reliable and is furnished subject to errors, omissions, modifications, removal of the listing from sale or lease, and to any listing conditions, including the rates and manner of payment of commissions for particular offerings imposed by Meridian Capital Group. This information may include estimates and projections prepared by Meridian Capital Group with respect to future events, and these future events may or may not actually occur. Such estimates and projections reflect various assumptions concerning anticipated results. While Meridian Capital Group believes these assumptions are reasonable, there can be no assurance that any of these estimates and projections will be correct. Therefore, actual results may vary materially from these estimates and projections. Any square footage dimensions set forth are approximate.



INTERIOR

JAMES FAMULARO
President

GARRETT KELLY
Director
212.468.5939
gkelly@meridiancapital.com

NOAM AZIZ
Director
212.468.5984
naziz@meridiancapital.com

CARSON SHAHRABANI
Associate
212.468.5927
cshahrabani@meridiancapital.com



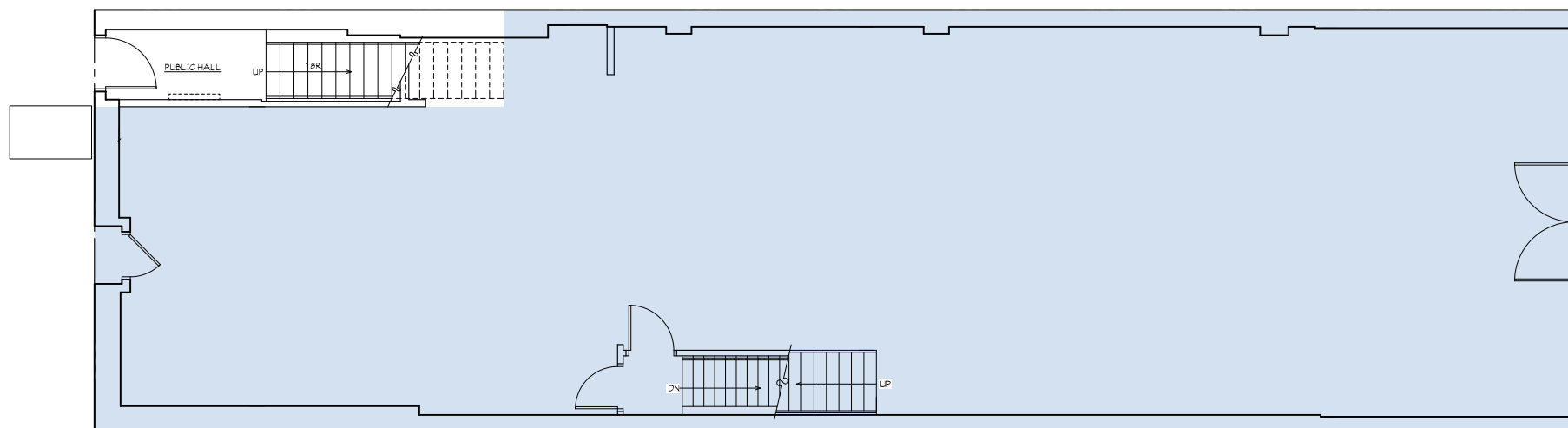
MERIDIAN
RETAIL LEASING

137 ORCHARD STREET
LOWER EAST SIDE, NYC | Between Rivington and Delancey Streets

RETAIL/RESTAURANT FOR LEASE

FLOOR PLAN

ALLEN STREET



ORCHARD STREET

JAMES FAMULARO
President

GARRETT KELLY
Director
212.468.5939
gkelly@meridiancapital.com

NOAM AZIZ
Director
212.468.5984
naziz@meridiancapital.com

CARSON SHAHRABANI
Associate
212.468.5927
cshahrabani@meridiancapital.com



MERIDIAN
RETAIL LEASING

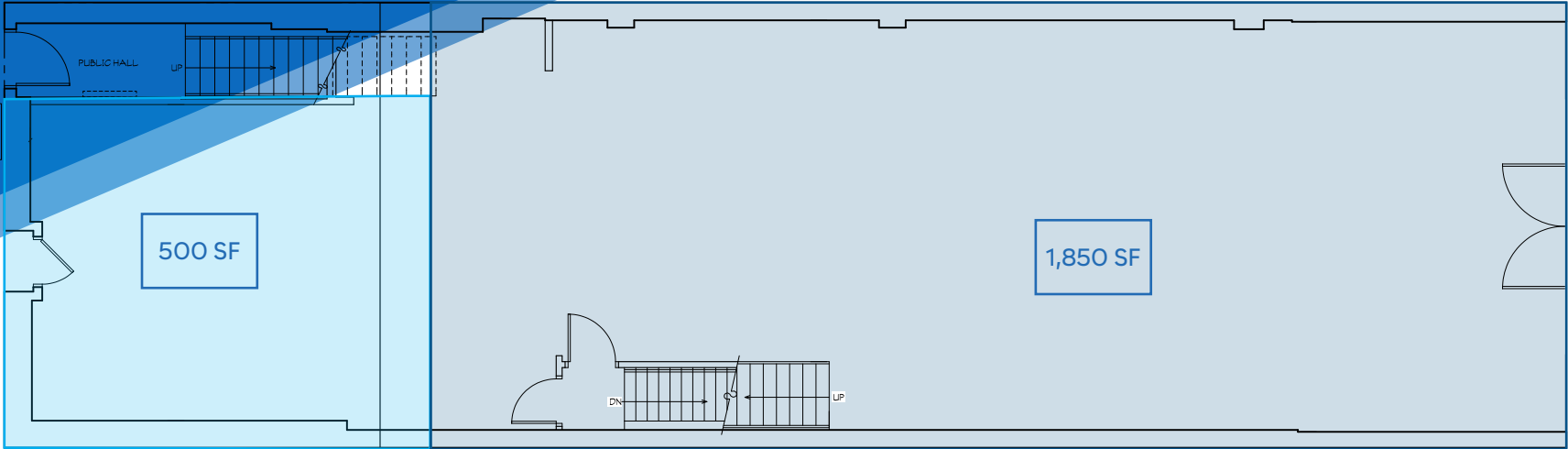
All information supplied is from sources deemed reliable and is furnished subject to errors, omissions, modifications, removal of the listing from sale or lease, and to any listing conditions, including the rates and manner of payment of commissions for particular offerings imposed by Meridian Capital Group. This information may include estimates and projections prepared by Meridian Capital Group with respect to future events, and these future events may or may not actually occur. Such estimates and projections reflect various assumptions concerning anticipated results. While Meridian Capital Group believes these assumptions are reasonable, there can be no assurance that any of these estimates and projections will be correct. Therefore, actual results may vary materially from these estimates and projections. Any square footage dimensions set forth are approximate.

137 ORCHARD STREET
LOWER EAST SIDE, NYC | Between Rivington and Delancey Streets

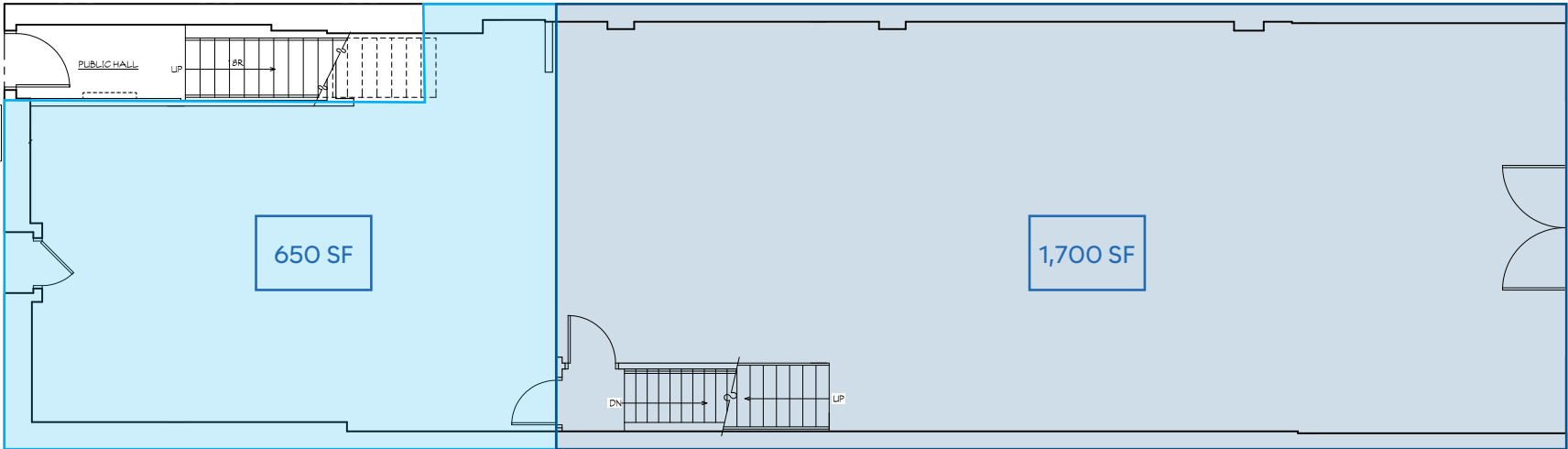
RETAIL/RESTAURANT FOR LEASE

FLOOR PLAN | POSSIBLE DIVISIONS

ALLEN STREET



ALLEN STREET



JAMES FAMULARO
President

GARRETT KELLY
Director
212.468.5939
gkelly@meridiancapital.com

NOAM AZIZ
Director
212.468.5984
naziz@meridiancapital.com

CARSON SHAHRABANI
Associate
212.468.5927
cshahrabani@meridiancapital.com



MERIDIAN
RETAIL LEASING

All information supplied is from sources deemed reliable and is furnished subject to errors, omissions, modifications, removal of the listing from sale or lease, and to any listing conditions, including the rates and manner of payment of commissions for particular offerings imposed by Meridian Capital Group. This information may include estimates and projections prepared by Meridian Capital Group with respect to future events, and these future events may or may not actually occur. Such estimates and projections reflect various assumptions concerning anticipated results. While Meridian Capital Group believes these assumptions are reasonable, there can be no assurance that any of these estimates and projections will be correct. Therefore, actual results may vary materially from these estimates and projections. Any square footage dimensions set forth are approximate.

LOWER EAST SIDE, NYC | Between Rivington and Delancey Streets



CARSON SHAHRABANI
Associate
212.468.5927
cshahrabani@meridiancapital.com



MERIDIAN RETAIL LEASING

All information supplied is from sources deemed reliable and is furnished subject to errors, omissions, modifications, removal of the listing from sale or lease, and to any listing conditions, including the rates and manner of payment of commissions for particular offerings imposed by Meridian Capital Group. This information may include estimates and projections prepared by Meridian Capital Group with respect to future events, and these future events may or may not actually occur. Such estimates and projections reflect various assumptions concerning anticipated results. While Meridian Capital Group believes these assumptions are reasonable, there can be no assurance that any of these estimates and projections will be correct. Therefore, actual results may vary materially from these estimates and projections. Any square footage dimensions set forth are approximate.