

90

WASHINGTON STREET FINANCIAL DISTRICT, NYC

Between Rector & Joseph P. Ward Streets

RETAIL FOR LEASE

APPROXIMATE SIZE

8,141 SF

ASKING RENT

Upon Request

POSSESSION

Immediate

TERM

10+ Years

FRONTAGE

90 FT Wraparound

COMMENTS

- Turn-key daycare/pre-school
- Child-friendly features throughout; bathroom toilets, sinks, multiple rooms, and ample storage
- Two means of egress; Entrance on West Street and emergency exit on Washington Street
- High foot traffic from the World Trade Center and the Oculus
- Surrounded by offices, institutions, and retail

NEIGHBORS

90 Washington Street Apartment Complex • Clinton Hall • Hotel Indigo • Honey's Pet Grooming • Skinos • Bill's Bar & Burger • Morton's Steakhouse • Schilling • Inattesa Café • Treadwell

TRANSPORTATION

1 2 3 F W 4 5 A C E J Z



BEN BIBERAJ

Senior Director
703.434.1461
bbiberaaj@meridiancapital.com

NOAM AZIZ

Director
212.468.5984
naziz@meridiancapital.com

MARIKO TANAKA

Associate
212.468.5955
mtanaka@meridiancapital.com

MOINIAN  MERIDIAN
RETAIL LEASING

All information supplied is from sources deemed reliable and is furnished subject to errors, omissions, modifications, removal of the listing from sale or lease, and to any listing conditions, including the rates and manner of payment of commissions for particular offerings imposed by Meridian Capital Group. This information may include estimates and projections prepared by Meridian Capital Group with respect to future events, and these future events may or may not actually occur. Such estimates and projections reflect various assumptions concerning anticipated results. While Meridian Capital Group believes these assumptions are reasonable, there can be no assurance that any of these estimates and projections will be correct. Therefore, actual results may vary materially from these estimates and projections. Any square footage dimensions set forth are approximate.

90 WASHINGTON STREET

FINANCIAL DISTRICT, NYC | Between Rector and Joseph P. Ward Streets

RETAIL FOR LEASE



INTERIOR

BEN BIBERAJ

Senior Director
703.434.1461
bbiberaj@meridiancapital.com

NOAM AZIZ

Director
212.468.5984
naziz@meridiancapital.com

MARIKO TANAKA

Associate
212.468.5955
mtanaka@meridiancapital.com

MOINIAN  MERIDIAN
RETAIL LEASING

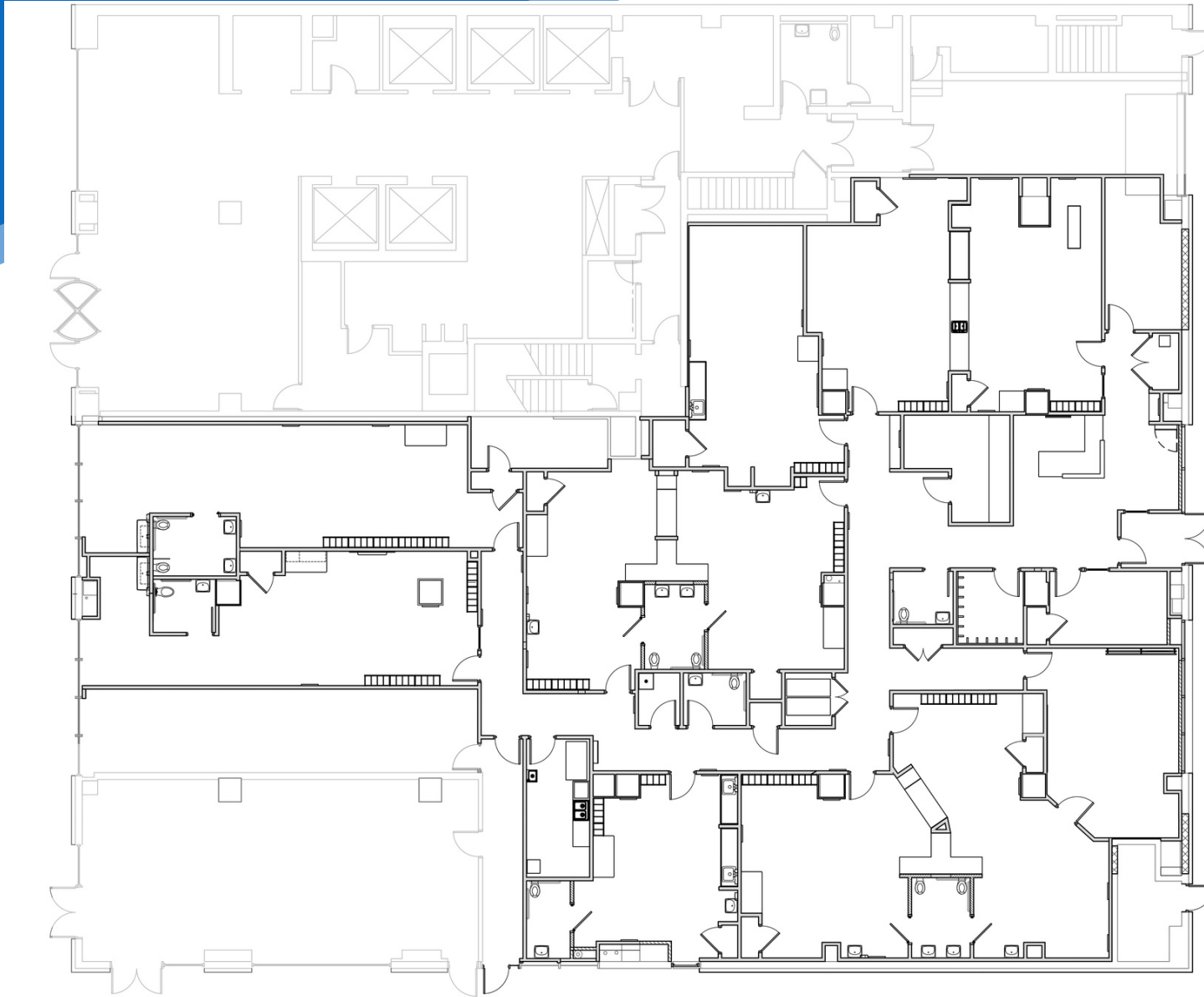
All information supplied is from sources deemed reliable and is furnished subject to errors, omissions, modifications, removal of the listing from sale or lease, and to any listing conditions, including the rates and manner of payment of commissions for particular offerings imposed by Meridian Capital Group. This information may include estimates and projections prepared by Meridian Capital Group with respect to future events, and these future events may or may not actually occur. Such estimates and projections reflect various assumptions concerning anticipated results. While Meridian Capital Group believes these assumptions are reasonable, there can be no assurance that any of these estimates and projections will be correct. Therefore, actual results may vary materially from these estimates and projections. Any square footage dimensions set forth are approximate.

90 WASHINGTON STREET

FINANCIAL DISTRICT, NYC | Between Rector and Joseph P. Ward Streets

RETAIL FOR LEASE

FLOOR PLAN



WEST STREET

BEN BIBERAJ

Senior Director
703.434.1461
bbiberaj@meridiancapital.com

NOAM AZIZ

Director
212.468.5984
naziz@meridiancapital.com

MARIKO TANAKA

Associate
212.468.5955
mtanaka@meridiancapital.com

MOINIAN  **MERIDIAN**
RETAIL LEASING

All information supplied is from sources deemed reliable and is furnished subject to errors, omissions, modifications, removal of the listing from sale or lease, and to any listing conditions, including the rates and manner of payment of commissions for particular offerings imposed by Meridian Capital Group. This information may include estimates and projections prepared by Meridian Capital Group with respect to future events, and these future events may or may not actually occur. Such estimates and projections reflect various assumptions concerning anticipated results. While Meridian Capital Group believes these assumptions are reasonable, there can be no assurance that any of these estimates and projections will be correct. Therefore, actual results may vary materially from these estimates and projections. Any square footage dimensions set forth are approximate.

90 WASHINGTON STREET

FINANCIAL DISTRICT, NYC | Between Rector and Joseph P. Ward Streets

RETAIL FOR LEASE



NEIGHBORS

BEN BIBERAJ

Senior Director
703.434.1461
bbiberaj@meridiancapital.com

NOAM AZIZ

Director
212.468.5984
naziz@meridiancapital.com

MARIKO TANAKA

Associate
212.468.5955
mtanaka@meridiancapital.com

MOINIAN  MERIDIAN
RETAIL LEASING

All information supplied is from sources deemed reliable and is furnished subject to errors, omissions, modifications, removal of the listing from sale or lease, and to any listing conditions, including the rates and manner of payment of commissions for particular offerings imposed by Meridian Capital Group. This information may include estimates and projections prepared by Meridian Capital Group with respect to future events, and these future events may or may not actually occur. Such estimates and projections reflect various assumptions concerning anticipated results. While Meridian Capital Group believes these assumptions are reasonable, there can be no assurance that any of these estimates and projections will be correct. Therefore, actual results may vary materially from these estimates and projections. Any square footage dimensions set forth are approximate.