

2875

WEST 8TH STREET

CONEY ISLAND, BROOKLYN



2875

WEST 8TH STREET CONEY ISLAND, BROOKLYN

Between Neptune & Surf Avenues

RETAIL FOR LEASE

APPROXIMATE SIZE

Suite #2: 800 SF
Suite #4: 1,320 SF
Suite #7: 775 SF
Suite #8: 150 SF
Suite #11: 875 SF

ASKING RENT

Suite #2: \$4,500/Month
Suite #4: \$7,000/Month
Suite #7: \$4,500/Month
Suite #8: \$2,250/Month
Suite #11: \$4,900/Month

POSSESSION

Immediate

TERM

Negotiable

FRONTAGE

12 FT

COMMENTS

- Vacant retail spaces inside the DMV building
- On-site parking behind the building
- Steps from Coney Island Luna Park Housing and 8th Street NY Aquarium Subway Station
- Signage opportunity on both the exterior and interior entrances

NEIGHBORS

Blink Fitness • Hangry Joe's • Dollar Tree • Turkiss Grill • CVS Pharmacy • McDonald's • Brothers Bagels • Georgian Corner • Amazon Warehouse

TRANSPORTATION



JAMES FAMULARO
President

NOAM AZIZ
Director
212.468.5984
naziz@meridiancapital.com

DANIEL RACHLINE
Senior Associate
212.468.5956
drachline@meridiancapital.com

AARON HAROUNIAN
Associate
212.468.5957
aharounian@meridiancapital.com

DAVID SIMHON
Associate
212.468.5947
dsimhon@meridiancapital.com



All information supplied is from sources deemed reliable and is furnished subject to errors, omissions, modifications, removal of the listing from sale or lease, and to any listing conditions, including the rates and manner of payment of commissions for particular offerings imposed by Meridian Capital Group. This information may include estimates and projections prepared by Meridian Capital Group with respect to future events, and these future events may or may not actually occur. Such estimates and projections reflect various assumptions concerning anticipated results. While Meridian Capital Group believes these assumptions are reasonable, there can be no assurance that any of these estimates and projections will be correct. Therefore, actual results may vary materially from these estimates and projections. Any square footage dimensions set forth are approximate.

2875 WEST 8TH STREET
CONEY ISLAND, BROOKLYN | Between Neptune and Surf Avenue

RETAIL FOR LEASE



SUITE #2



SUITE #2



SUITE #4

INTERIOR

JAMES FAMULARO
President

NOAM AZIZ
Director
212.468.5984
naziz@meridiancapital.com

DANIEL RACHLINE
Senior Associate
212.468.5956
drachline@meridiancapital.com

AARON HAROUNIAN
Associate
212.468.5957
aharounian@meridiancapital.com

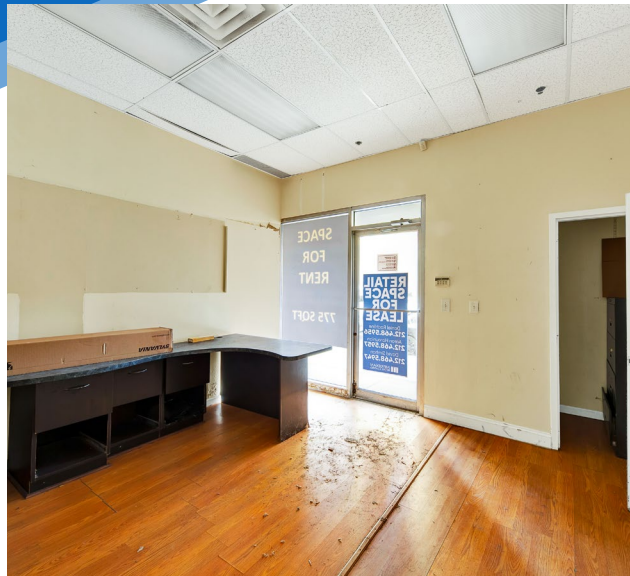
DAVID SIMHON
Associate
212.468.5947
dsimhon@meridiancapital.com

 **MERIDIAN**
RETAIL LEASING

All information supplied is from sources deemed reliable and is furnished subject to errors, omissions, modifications, removal of the listing from sale or lease, and to any listing conditions, including the rates and manner of payment of commissions for particular offerings imposed by Meridian Capital Group. This information may include estimates and projections prepared by Meridian Capital Group with respect to future events, and these future events may or may not actually occur. Such estimates and projections reflect various assumptions concerning anticipated results. While Meridian Capital Group believes these assumptions are reasonable, there can be no assurance that any of these estimates and projections will be correct. Therefore, actual results may vary materially from these estimates and projections. Any square footage dimensions set forth are approximate.

2875 WEST 8TH STREET
CONEY ISLAND, BROOKLYN | Between Neptune and Surf Avenue

RETAIL FOR LEASE



INTERIOR

JAMES FAMULARO
President

NOAM AZIZ
Director
212.468.5984
naziz@meridiancapital.com

DANIEL RACHLINE
Senior Associate
212.468.5956
drachline@meridiancapital.com

AARON HAROUNIAN
Associate
212.468.5957
aharounian@meridiancapital.com

DAVID SIMHON
Associate
212.468.5947
dsimhon@meridiancapital.com

 **MERIDIAN**
RETAIL LEASING

All information supplied is from sources deemed reliable and is furnished subject to errors, omissions, modifications, removal of the listing from sale or lease, and to any listing conditions, including the rates and manner of payment of commissions for particular offerings imposed by Meridian Capital Group. This information may include estimates and projections prepared by Meridian Capital Group with respect to future events, and these future events may or may not actually occur. Such estimates and projections reflect various assumptions concerning anticipated results. While Meridian Capital Group believes these assumptions are reasonable, there can be no assurance that any of these estimates and projections will be correct. Therefore, actual results may vary materially from these estimates and projections. Any square footage dimensions set forth are approximate.

2875 WEST 8TH STREET
CONEY ISLAND, BROOKLYN | Between Neptune and Surf Avenue

RETAIL FOR LEASE

ON-SITE PARKING



JAMES FAMULARO
President

NOAM AZIZ
Director
212.468.5984
naziz@meridiancapital.com

DANIEL RACHLINE
Senior Associate
212.468.5956
drachline@meridiancapital.com

AARON HAROUNIAN
Associate
212.468.5957
aharounian@meridiancapital.com

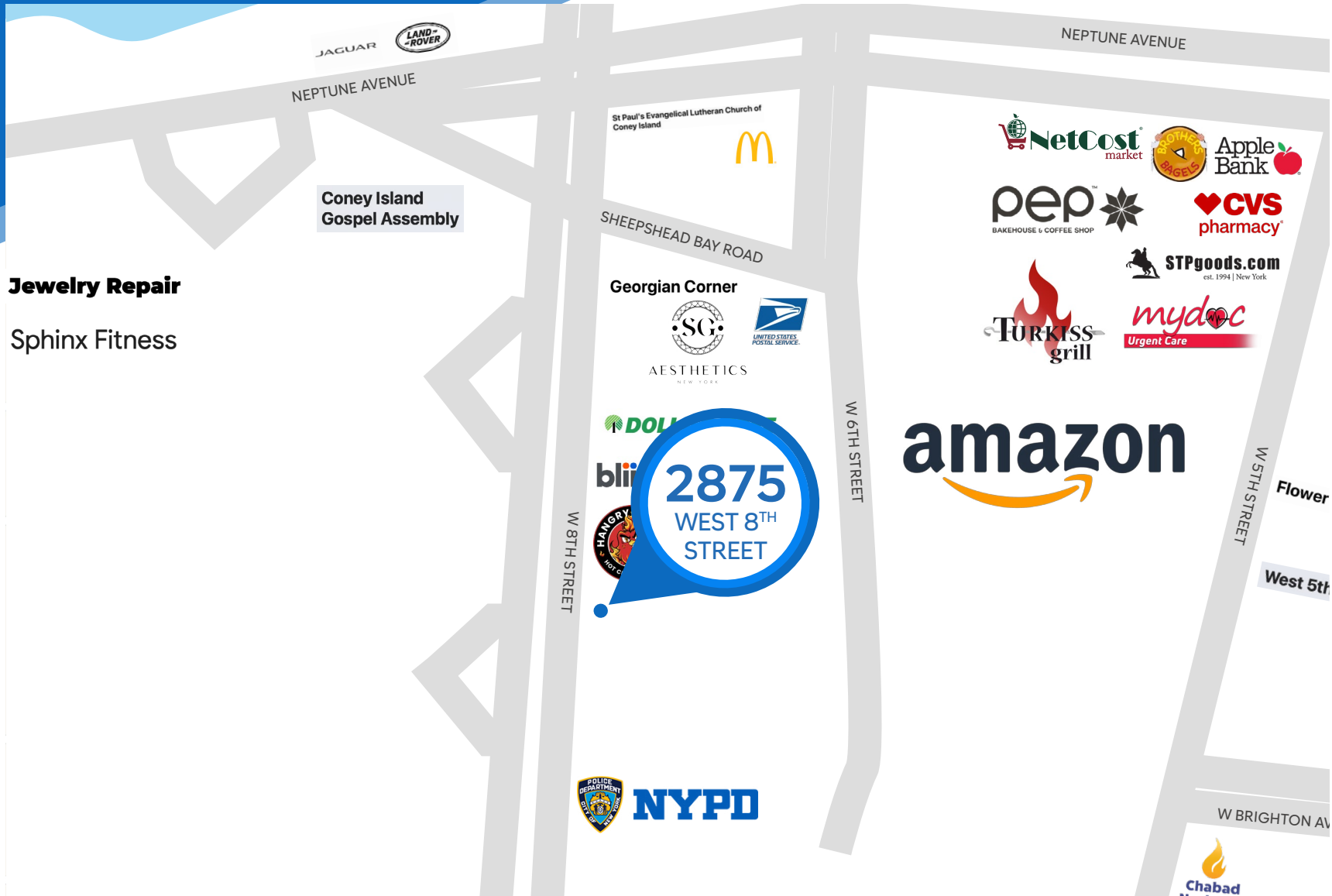
DAVID SIMHON
Associate
212.468.5947
dsimhon@meridiancapital.com



All information supplied is from sources deemed reliable and is furnished subject to errors, omissions, modifications, removal of the listing from sale or lease, and to any listing conditions, including the rates and manner of payment of commissions for particular offerings imposed by Meridian Capital Group. This information may include estimates and projections prepared by Meridian Capital Group with respect to future events, and these future events may or may not actually occur. Such estimates and projections reflect various assumptions concerning anticipated results. While Meridian Capital Group believes these assumptions are reasonable, there can be no assurance that any of these estimates and projections will be correct. Therefore, actual results may vary materially from these estimates and projections. Any square footage dimensions set forth are approximate.

2875 WEST 8TH STREET
CONEY ISLAND, BROOKLYN | Between Neptune and Surf Avenue

RETAIL FOR LEASE



Jewelry Repair

Sphinx Fitness

NEIGHBORS

JAMES FAMULARO
President

NOAM AZIZ
Director
212.468.5984
naziz@meridiancapital.com

DANIEL RACHLINE
Senior Associate
212.468.5956
drachline@meridiancapital.com

AARON HAROUNIAN
Associate
212.468.5957
aharounian@meridiancapital.com

DAVID SIMHON
Associate
212.468.5947
dsimhon@meridiancapital.com

 **MERIDIAN**
RETAIL LEASING

All information supplied is from sources deemed reliable and is furnished subject to errors, omissions, modifications, removal of the listing from sale or lease, and to any listing conditions, including the rates and manner of payment of commissions for particular offerings imposed by Meridian Capital Group. This information may include estimates and projections prepared by Meridian Capital Group with respect to future events, and these future events may or may not actually occur. Such estimates and projections reflect various assumptions concerning anticipated results. While Meridian Capital Group believes these assumptions are reasonable, there can be no assurance that any of these estimates and projections will be correct. Therefore, actual results may vary materially from these estimates and projections. Any square footage dimensions set forth are approximate.