

27

WHITEHALL STREET FINANCIAL DISTRICT, NYC

Corner of Whitehall & Bridge Street

MEDICAL/OFFICE FOR LEASE

APPROXIMATE SIZE

Third Floor: 2,200 SF

ASKING RENT

\$6,500/Month

POSSESSION

Immediate

TERM

Negotiable

COMMENTS

- Prominent corner in the hub of the office corridor in the Financial District
- Full floor loft office space
- Newly renovated with 2 private bathrooms, kitchen, and central HVAC
- Brand-new wraparound windows providing natural light
- Elevator access directly to the floor
- Close proximity to subway, ferry, and bus transit

NEIGHBORS

Fraunces Tavern • The Dead Rabbit • Springbone Kitchen • JP Morgan • 3 Times • The White Horse Tavern • Potbelly • Urban Space • Café Grumpy • Broadstone Bar & Kitchen • Havana Social • Tacombi • Mad Dogs • Underdog

TRANSPORTATION

1 2 R W 4 5 A C E J Z

JAMES FAMULARO

President

NOAM AZIZ

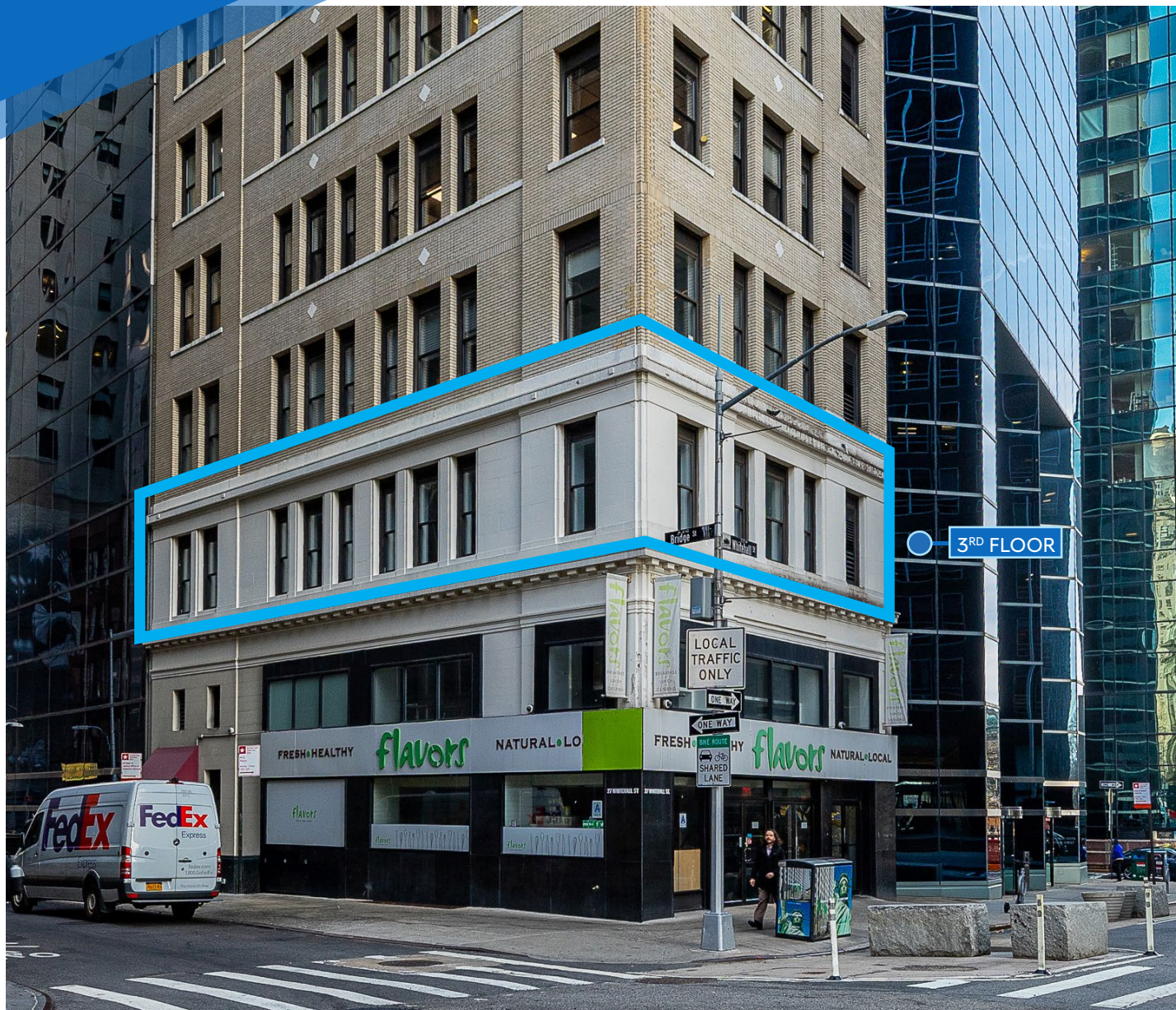
Director
212.468.5984

naziz@meridiancapital.com

CARSON SHAHRABANI

Associate
212.468.5927

cshahrabani@meridiancapital.com

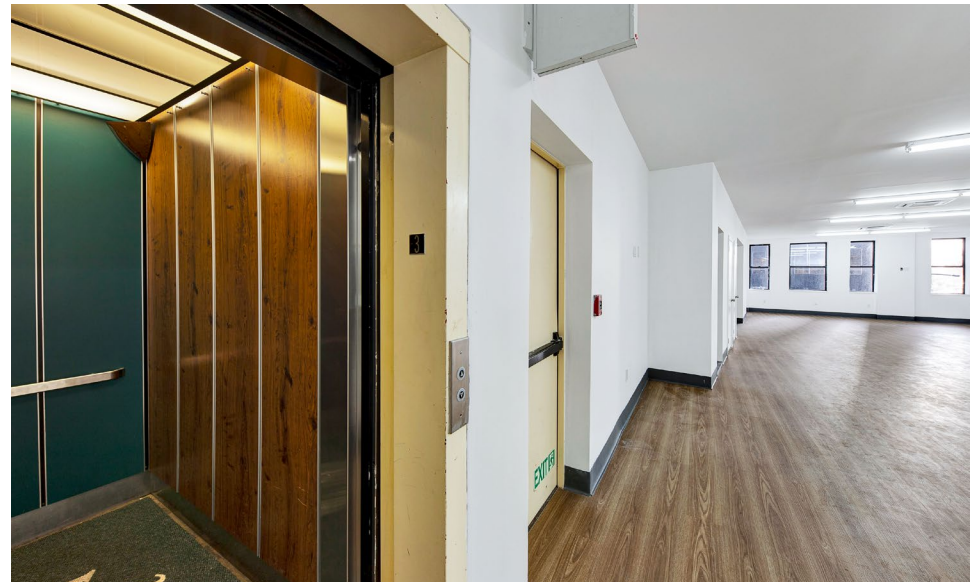
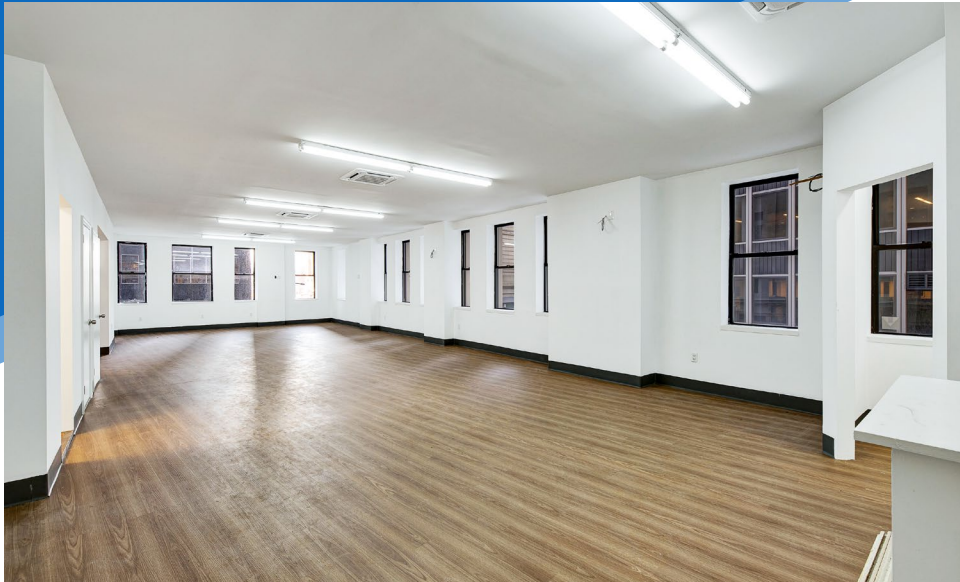


MERIDIAN
RETAIL LEASING

All information supplied is from sources deemed reliable and is furnished subject to errors, omissions, modifications, removal of the listing from sale or lease, and to any listing conditions, including the rates and manner of payment of commissions for particular offerings imposed by Meridian Capital Group. This information may include estimates and projections prepared by Meridian Capital Group with respect to future events, and these future events may or may not actually occur. Such estimates and projections reflect various assumptions concerning anticipated results. While Meridian Capital Group believes these assumptions are reasonable, there can be no assurance that any of these estimates and projections will be correct. Therefore, actual results may vary materially from these estimates and projections. Any square footage dimensions set forth are approximate.

27 WHITEHALL STREET
FINANCIAL DISTRICT, NYC | Corner of Whitehall & Bridge Street

MEDICAL/OFFICE FOR LEASE



INTERIOR

JAMES FAMULARO
President

NOAM AZIZ
Director
212.468.5984
naziz@meridiancapital.com

CARSON SHAHRABANI
Associate
212.468.5927
cshahrabani@meridiancapital.com



MERIDIAN
RETAIL LEASING

All information supplied is from sources deemed reliable and is furnished subject to errors, omissions, modifications, removal of the listing from sale or lease, and to any listing conditions, including the rates and manner of payment of commissions for particular offerings imposed by Meridian Capital Group. This information may include estimates and projections prepared by Meridian Capital Group with respect to future events, and these future events may or may not actually occur. Such estimates and projections reflect various assumptions concerning anticipated results. While Meridian Capital Group believes these assumptions are reasonable, there can be no assurance that any of these estimates and projections will be correct. Therefore, actual results may vary materially from these estimates and projections. Any square footage dimensions set forth are approximate.

27 WHITEHALL STREET

FINANCIAL DISTRICT, NYC | Corner of Whitehall & Bridge Street

MEDICAL/OFFICE FOR LEASE

NEIGHBORS



JAMES FAMULARO
President

NOAM AZIZ
Director
212.468.5984
naziz@meridiancapital.com

CARSON SHAHRABANI
Associate
212.468.5927
cshahrabani@meridiancapital.com



MERIDIAN
RETAIL LEASING

All information supplied is from sources deemed reliable and is furnished subject to errors, omissions, modifications, removal of the listing from sale or lease, and to any listing conditions, including the rates and manner of payment of commissions for particular offerings imposed by Meridian Capital Group. This information may include estimates and projections prepared by Meridian Capital Group with respect to future events, and these future events may or may not actually occur. Such estimates and projections reflect various assumptions concerning anticipated results. While Meridian Capital Group believes these assumptions are reasonable, there can be no assurance that any of these estimates and projections will be correct. Therefore, actual results may vary materially from these estimates and projections. Any square footage dimensions set forth are approximate.