

2254

ADAM CLAYTON POWELL JR. BOULEVARD
HARLEM, NYC

Between West 132nd & 133rd Streets

RETAIL FOR LEASE

APPROXIMATE SIZE

691 SF

ASKING RENT

\$5,500/Month

POSSESSION

Arranged

TERM

10-15 Years

FRONTAGE

15 FT

COMMENTS

- Large signage opportunity
- Bathroom in place
- 7-day-a-week foot traffic

NEIGHBORS

Harlem Children's Zone • Mini Market •
Renaissance Restaurant • Harlem Café •
Just Lorraine's Place • Lambda Lounge •
Framed by Tee Tee • Rally Home Furniture

TRANSPORTATION

2 3



PROPERTY INFORMATION

JAMES FAMULARO

President
656.658.7373
jfamularo@meridiancapital.com

COLE KLEPPINGER

Associate
212.468.5993
ckleppinger@meridiancapital.com



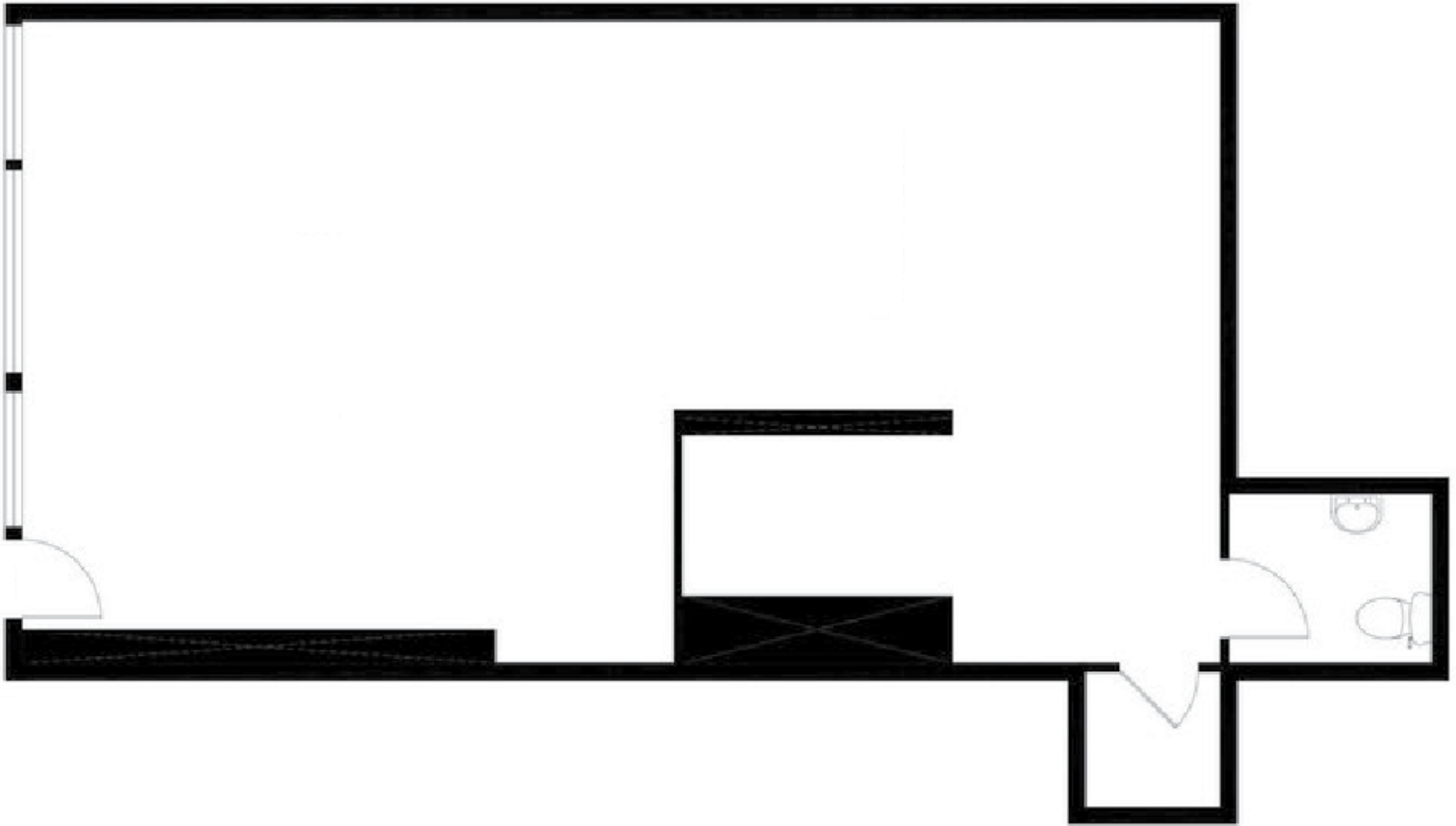
MERIDIAN
RETAIL LEASING

All information supplied is from sources deemed reliable and is furnished subject to errors, omissions, modifications, removal of the listing from sale or lease, and to any listing conditions, including the rates and manner of payment of commissions for particular offerings imposed by Meridian Capital Group. This information may include estimates and projections prepared by Meridian Capital Group with respect to future events, and these future events may or may not actually occur. Such estimates and projections reflect various assumptions concerning anticipated results. While Meridian Capital Group believes these assumptions are reasonable, there can be no assurance that any of these estimates and projections will be correct. Therefore, actual results may vary materially from these estimates and projections. Any square footage dimensions set forth are approximate.

2254 ADAM CLAYTON POWELL JR. BOULEVARD
HARLEM, NYC | Between West 132nd and 133rd Streets

RETAIL FOR LEASE

FLOOR PLAN



JAMES FAMULARO

President
656.658.7373
jfamularo@meridiancapital.com

COLE KLEPPINGER

Associate
212.468.5993
ckleppinger@meridiancapital.com



MERIDIAN
RETAIL LEASING

All information supplied is from sources deemed reliable and is furnished subject to errors, omissions, modifications, removal of the listing from sale or lease, and to any listing conditions, including the rates and manner of payment of commissions for particular offerings imposed by Meridian Capital Group. This information may include estimates and projections prepared by Meridian Capital Group with respect to future events, and these future events may or may not actually occur. Such estimates and projections reflect various assumptions concerning anticipated results. While Meridian Capital Group believes these assumptions are reasonable, there can be no assurance that any of these estimates and projections will be correct. Therefore, actual results may vary materially from these estimates and projections. Any square footage dimensions set forth are approximate.



NEIGHBORS

JAMES FAMULARO
 President
 656.658.7373
 jfamularo@meridiancapital.com

COLE KLEPPINGER
 Associate
 212.468.5993
 ckleppinger@meridiancapital.com



MERIDIAN
 RETAIL LEASING

All information supplied is from sources deemed reliable and is furnished subject to errors, omissions, modifications, removal of the listing from sale or lease, and to any listing conditions, including the rates and manner of payment of commissions for particular offerings imposed by Meridian Capital Group. This information may include estimates and projections prepared by Meridian Capital Group with respect to future events, and these future events may or may not actually occur. Such estimates and projections reflect various assumptions concerning anticipated results. While Meridian Capital Group believes these assumptions are reasonable, there can be no assurance that any of these estimates and projections will be correct. Therefore, actual results may vary materially from these estimates and projections. Any square footage dimensions set forth are approximate.